

Philips
Professional LCD TV

42" PrimeSuite

DVB-T/C MPEG 2/4

42HFL4372D



Versatile and outstanding in every way

Philips Hospitality LCD TV

This modern Hospitality TV brings more guest convenience to the room. It also allows you to show HD channels to your guests in both standalone and interactive set-up.

Advanced hotel features and future proof

- Full HD LCD display, with a 1920 x 1080p resolution
- Integrated Connectivity Panel
- VSecure for digital content protection in hotels
- MyChoice compatibility for recurring revenues
- Theme TV for easy location of guests' own national channels
- Installation menu locking
- Programmable Switch On Channel
- One combined channel list for Analogue and Digital channels

Differentiating guest experience

- Volume limitation
- Advanced EPG and channel list
- USB for fantastic multimedia playback

Sustainable and safe

- Low power consumption

PHILIPS
sense and simplicity

Highlights

Full HD LCD display 1920 x 1080p



The Full HD screen has the widescreen resolution of 1920 x 1080p. This is the highest resolution of HD sources for the best possible picture quality. It is fully future-proof as it supports 1080p signals from all sources, including the most recent sources such as Blu-ray and advanced HD game consoles. The signal processing is extensively upgraded to support this much higher signal quality and resolution. It produces brilliant flicker-free progressive scan pictures with superb brightness and colours.

Integrated Connectivity Panel

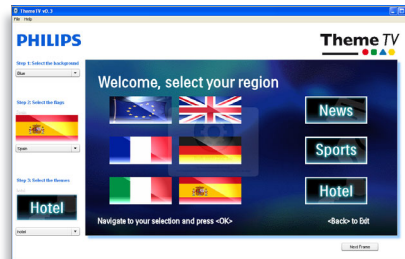
The Integrated Connectivity Panel allows your guests to seamlessly connect their personal devices to your TV without the need for an external Connectivity Panel.

VSecure

To show HD premium content to the guest there is a need for strict content security precautions from the content industry. Philips has developed a total solution for HD content security in hotels, consisting of VSecure for

HD content protection and NexGuard for HD forensic watermarking.

Theme TV



Theme TV offers an advanced user interface that enables your guests to navigate the guest menu to find their own country's channels, news and hotel information easily without the need of an interactive entertainment system.

MyChoice compatible

MyChoice offers a simple and low-cost way to offer your guests premium TV channels. At the same time it delivers an additional revenue stream which allows you to recover your initial TV investment.

Eco-friendly design

Sustainability is integral to the way Philips does business. Philips TVs are designed and produced according to our EcoDesign principles aimed at minimising overall environmental impact, through lower power consumption, removal of hazardous substances, lower weight, more efficient packaging and better recyclability. Philips TVs

also have a special housing of flame-retardant material. Independent tests carried out by emergency fire services have shown that whereas TVs can sometimes intensify fires caused by external sources, Philips TVs will not contribute to a fire.

Programmable Switch On Channel

Perfect for in-house advertising or information channels as it allows a predefined channel to be shown when the TV is turned on.

Advanced EPG and channel list

The attractive EPG and channel list include intuitive buttons with clear guiding graphics to easily locate your favourite channels.

USB (multimedia)



The USB connector allows access to jpeg photos, MP3 music and video files on most USB sticks (USB memory-class device). Plug the USB into the slot on the side of the TV and access the multimedia content using the easy on-screen content browser. You can now view and share your videos, photos and music.

Hospitality features, system compatible

All Philips Hospitality TVs are especially made for the hospitality, detention and healthcare environments. Special features include volume limitation, menu locking, cloning and a special remote control. The PrimeSuite TV is designed for the system market and has full interactivity with a Set Top Box.



Specifications

Picture/Display

- Diagonal screen size: 42 inch / 107 cm
- Aspect ratio: Widescreen
- Display screen type: LCD WXGA+ Active Matrix TFT
- Panel resolution: 1920 x 1080p
- Brightness: 500 cd/m²
- Response time (typical): 5 ms
- Picture enhancement: 3/2 - 2/2 motion pull down, 3D Combfilter, Active Control, Colour Enhancement, Colour Transient Improvement, Digital Noise Reduction, Luminance Transient Improver, Progressive scan, Sharpness Adjustment, 3D MA deinterlacing, Automatic skin tone correction, Dynamic contrast enhancement, 1080p 24/25/30 Hz processing, 1080p 50/60 Hz processing, Pixel Plus HD
- Dynamic screen contrast: 150,000:1
- Screen enhancement: Anti-Reflection coated screen
- Viewing angle: 178° (H)/178° (V)
- Colour cabinet: Black glossy
- Peak Luminance ratio: 74 %

Supported Display Resolution

Video formats

Resolution	Refresh rate
480i	60 Hz
480p	60 Hz
576i	50 Hz
576p	50 Hz
1080i	50, 60 Hz
720p	50, 60 Hz
1080p	24, 50, 60 Hz
1080p	24, 25, 30, 50, 60 Hz

Computer formats

Resolution	Refresh rate
640 x 480	60 Hz
800 x 600	60 Hz
1024 x 768	60 Hz
1280 x 1024	60 Hz
1280 x 720	60 Hz
1280 x 768	60 Hz
1360 x 768	60 Hz

Tuner/Reception/Transmission

- Aerial Input: 75 ohm coaxial (IEC75)
- Number of Pre-set Channels: 999
- Tuner bands: Hyperband, S-Channel, UHF, VHF

- TV system: PAL I, PAL B/G, SECAM B/G, SECAM L/L', DVB COFDM 2K/8K
- Video Playback: PAL, SECAM, NTSC
- Digital TV: DVB-C MPEG4, DVB-T MPEG4

Sound

- Output power (RMS): 2 x 5 W
- Sound System: Nicam Stereo
- Sound Enhancement: Auto Volume Leveller, Incredible Surround, Smart Sound

Loudspeakers

- Built-in speakers: 2

Connectivity

- Number of Scarts: 1
- Number of HDMI connections: 3
- Ext 1 Scart: Audio L/R, RGB, CVBS in/out
- Front/Side connections: USB 2.0, HDMI v1.3, Audio L/R in
- HDMI 1: HDMI v1.3
- EasyLink (HDMI-CEC): One touch play, System standby
- Audio Output - Digital: Coaxial (cinch)
- Other connections: S/PDIF out (coaxial), PC-in VGA + Audio L/R in, Bathroom speaker out, Common Interface Plus (CI+)
- Connectivity Enhancements: Serial Xpress interface, Fast Infrared loop through, Power on scart, USB2.0

Convenience

- Ease of Installation: Plug and Play, Advanced Hotel Mode, Automatic Tuning System (ATS), Fine Tuning, PLL Digital Tuning, Automatic Channel Install (ACI), Programme Name, Auto Programme Naming, Autostore, Cloning of TV settings via USB, Installation menu locking, Security menu access, Keyboard lock-out
- Ease of Use: Auto Volume Leveller (AVL), 1 channel list analogue/digital, On-Screen Display, Programme List, Side Control, Graphical User Interface
- Comfort: Hotel Guest features, Auto power on, Green/Fast startup, Welcome message, Message indicator, Switch on channel, Volume limitation, Sleep timer
- Interactive hotel features: Connectivity panel compatible, Block automatic channel update, Block

- over-the-air SW download, Vsecure
- Prison mode: Txt, MHEG, USB, EPG, Sub block
- Teletext: 1000-page Hypertext
- Teletext enhancements: Fast text, Programme information Line
- Electronic Programme Guide: 8-day Electronic Programme Guide, Now + Next EPG
- Screen Format Adjustments: 4:3, Movie expand 14:9, Movie expand 16:9, Widescreen, Subtitle Zoom, Super Zoom, Auto Format
- Remote control type: 22AV1104A/10 (RC6)
- Remote Control: low battery detection, battery anti-theft protection
- Firmware upgradeable: Firmware upgradeable via USB, Firmware upgradeable via RF
- Other convenience: Kensington lock

Healthcare

- Control: Multi remote control, Pendant control via IR-link
- Convenience: Headphone out, Independent main speaker mute
- Safety: Double isolation Class II

Multimedia Applications

- Multimedia connections: USB
- Playback Formats: MP3, JPEG Still pictures, Slideshow files (.alb)
- Video Playback Formats: H264/MPEG-4 AVC

Power

- Mains power: 220-240 V, 50/60 Hz
- Power consumption (typical): 100 W
- Standby power consumption: 0.22 W
- Ambient temperature: 5°C to 40°C
- Presence of lead: Yes*
- Annual energy consumption: 142 kWh
- Mercury content: 56 mg

Green Specifications

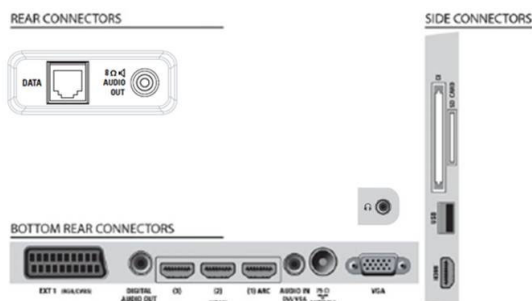
- Safety: Flame-retardant housing
- Low Power Standby
- SmartPower Eco

Dimensions

- Set dimensions (W x H x D): 1025 x 636 x 93 mm
- Set dimensions with stand (W x H x D): 1025 x 687 x 360 mm
- Box dimensions (W x H x D): 1268 x 730 x 246 mm
- Product weight: 16 kg
- Product weight (+stand): 19 kg
- VESA wall mount compatible: 200 x 200 mm
- Weight incl. Packaging: 22 kg

Accessories

- Included accessories: Remote Control, Batteries for remote control, Power cord, Warranty Leaflet, Wall mounting bracket
- Optional accessories: Wall mount (tilt) 22AV3200/10, Set up remote 22AV8573/00, Tabletop Stand with Swivel



Issue date 2012-04-06

Version: 5.1.3

12 NC: 8670 000 68486
EAN: 87 12581 56470 4

© 2012 Koninklijke Philips Electronics N.V.
All Rights reserved.

Specifications are subject to change without notice.
Trademarks are the property of Koninklijke Philips Electronics N.V. or their respective owners.

www.philips.com

* Energy consumption in kWh per year, based on the power consumption of the television operating 4 hours per day for 365 days. The actual energy consumption will depend on how the television is used.

* This television contains lead only in certain parts or components where no technology alternatives exist in accordance with existing exemption clauses under the RoHS Directive.

* Typical on-mode power consumption measured according to IEC62087 Ed 2.