

# PHILIPS

## Air Styler

### 3000 Series

4 attachments

Ionic care

Ceramic Argan Oil



BHA310/03



## Multiple hairstyles with ionic care

Dry & style at once - the Philips Air Styler 3000 allows you to create beautiful natural styles, whilst providing extra shine with Ionic care. The 4 attachments are suitable for both long and short hair, so you can enjoy easy styling.

### Easy to use

- Cool air setting for gentle drying

### Beautifully styled hair

- 800W styling power for salon-like results
- 30 mm retractable bristle brush for defined waves
- Paddle Straightening Brush for naturally straight looks
- Three flexible heat and speed settings for easy control
- 38 mm ThermoBrush for smooth styles and waves
- Narrow concentrator for focused airflow

### Care and protect

- Argan-oil infused brush
- Care setting for better protection while drying and styling
- More Care with ion conditioning for shiny, frizz-free hair

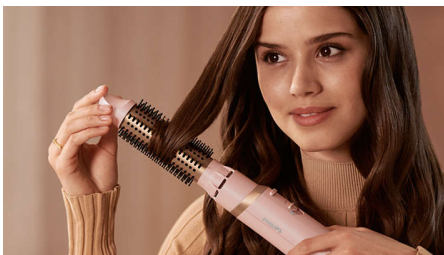
# Highlights

## 800W



The Air Styler with 800W airflow for a gentle drying and styling. Achieve salon-like results every day.

## Argan-oil infused brush



The airstyler uses ceramic brushes infused with argan oil to make styling fast and effortless, with a brushing action that feels as silky smooth as your hair looks.

## Care setting



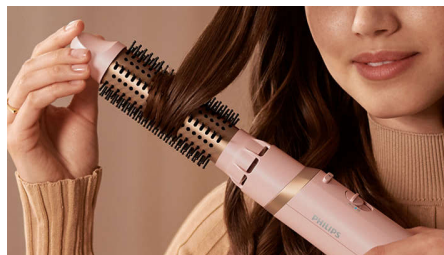
The 'Care' setting ensures the optimum drying temperature and guards against overheating. Hair still dries fast, with the same powerful airflow but at a constant, caring temperature.

## Ionic Care



Ionic conditioning enables anti-static drying. Charged negative ions eliminate static hair, condition the hair and smooth down the hair cuticles to intensify the hair's shine and glossiness. The result is smooth and frizz-free hair that shines beautifully.

## Retractable bristle brush



The 30 mm brush with retractable bristles is designed for the easy styling. Turn the tip of the brush and slide it out for defined waves.

## Paddle Straightening Brush

With the innovative Paddle Straightening Brush, attached to the handle, you can create beautiful naturally straight looking hair

## Three flexible settings



The speed and heat required can be easily adjusted to create the perfect result. Three flexible settings ensure precise and tailored styling.

## Cool air setting



The Cool air setting uses low heat to gently dry your hair. It works especially well with fine, dry or damaged hair.

## 38 mm ThermoBrush



The ThermoBrush has an extra wide diameter of 38 mm. The width of the barrel makes it the perfect styling tool for creating smooth styles and waves.

## Narrow concentrator



Use the narrow concentrator for the focused airflow for precise styling or touch-ups.



# Specifications

## Technical specifications

Cord length: 1.8 m

Number of heat settings: 3 heat with 2 speed

## Power

Voltage: 220-240V

Wattage: 800W

## Ease of use

Storage hook

Swivel cord

## Attachments

Retractable bristle brush: For tangle free waves & curls

Nozzle: For a focused airflow

Paddle straightening brush: For naturally

straight looks

38 mm ThermoBrush: For smooth styles and waves

## Service

2-year worldwide warranty

## Caring technologies

Ion technology

Caring temperature setting

