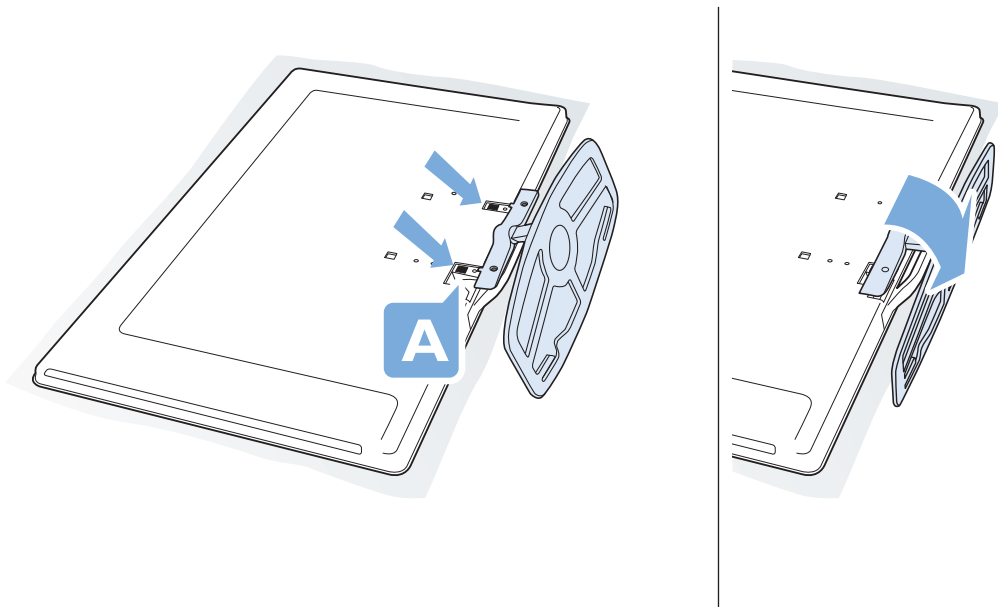
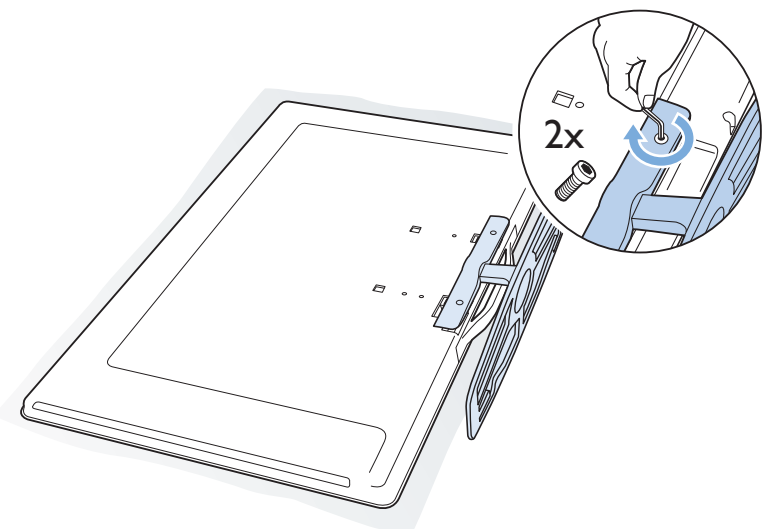


1 1x 2x
台式安装
Stand mounting

将桌架固定到电视上
Fix the stand to the TV

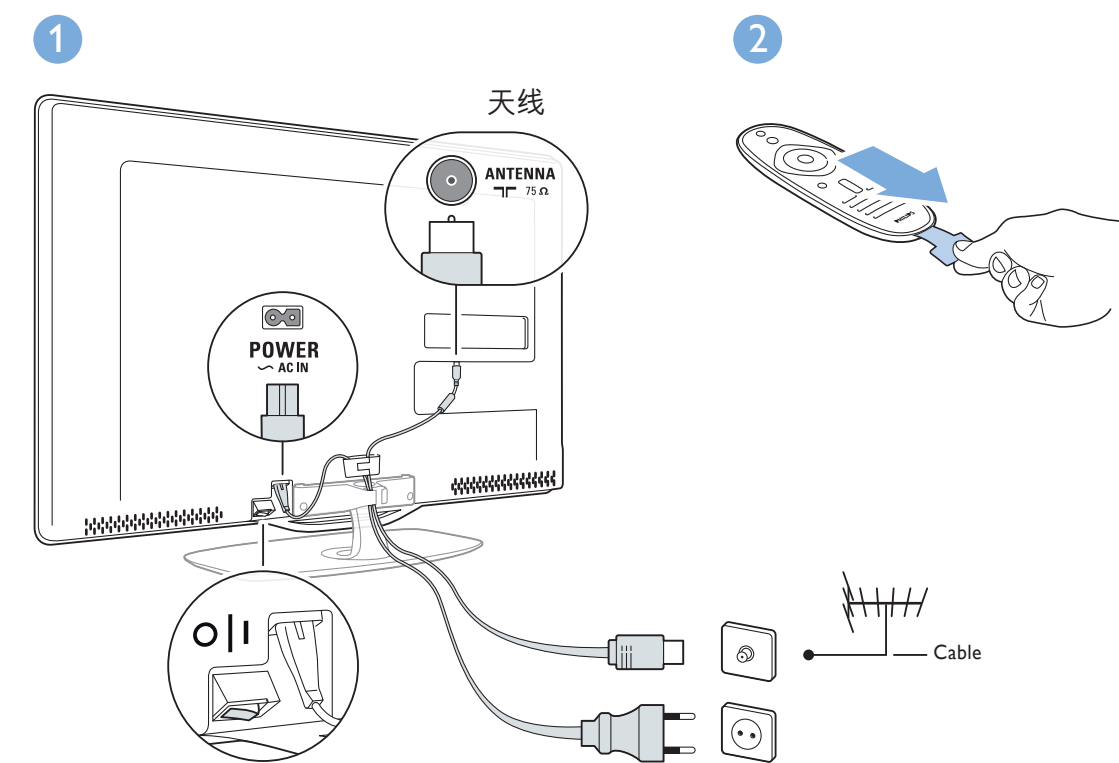


2
使用 2 颗螺丝
Use the 2 screws



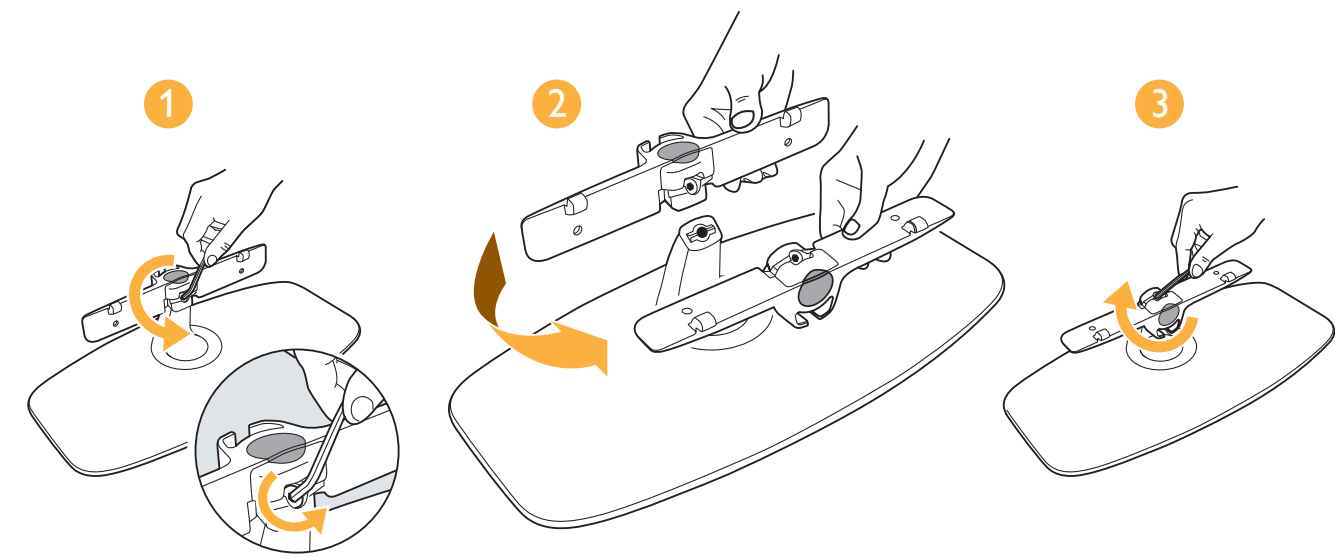
... **3** **4**

5
第一个接口
First connections

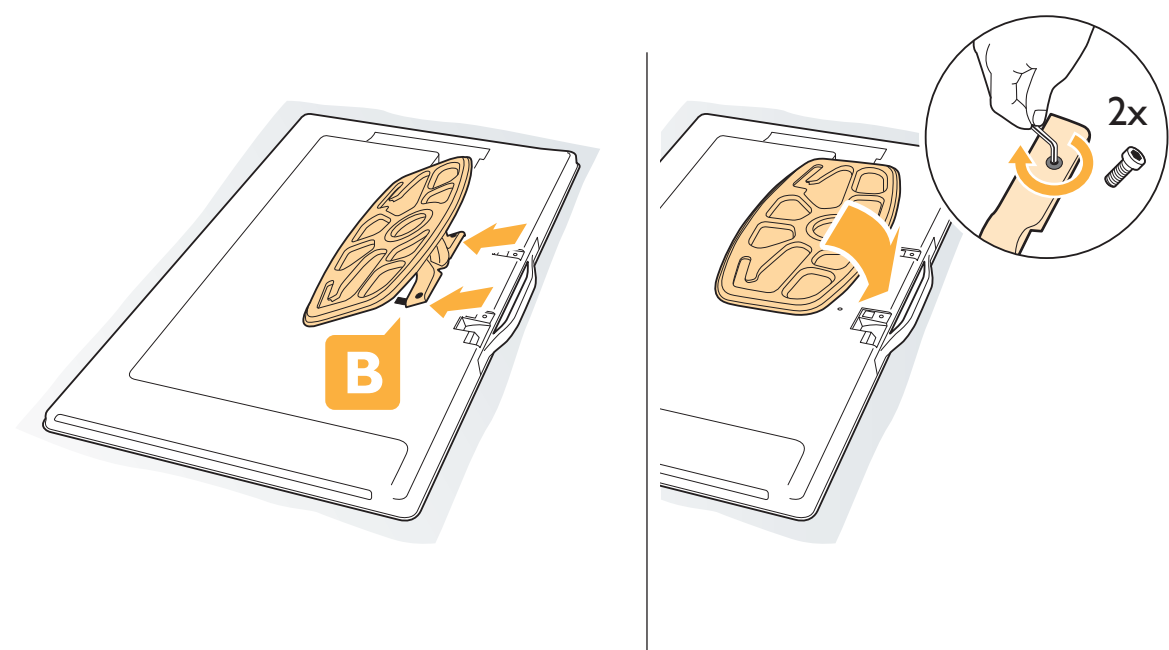


1 1x 2x 2x
壁挂式安装
Wall mounting

转动门条
Turn the bar

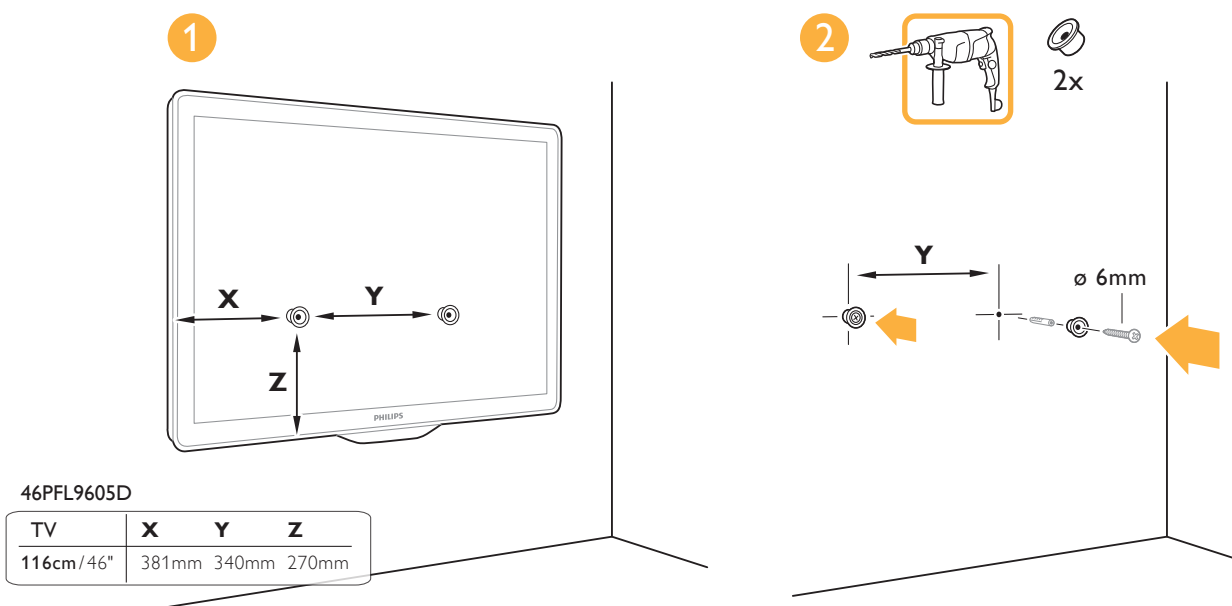


2
将桌架固定到电视上
Fix the stand to the TV

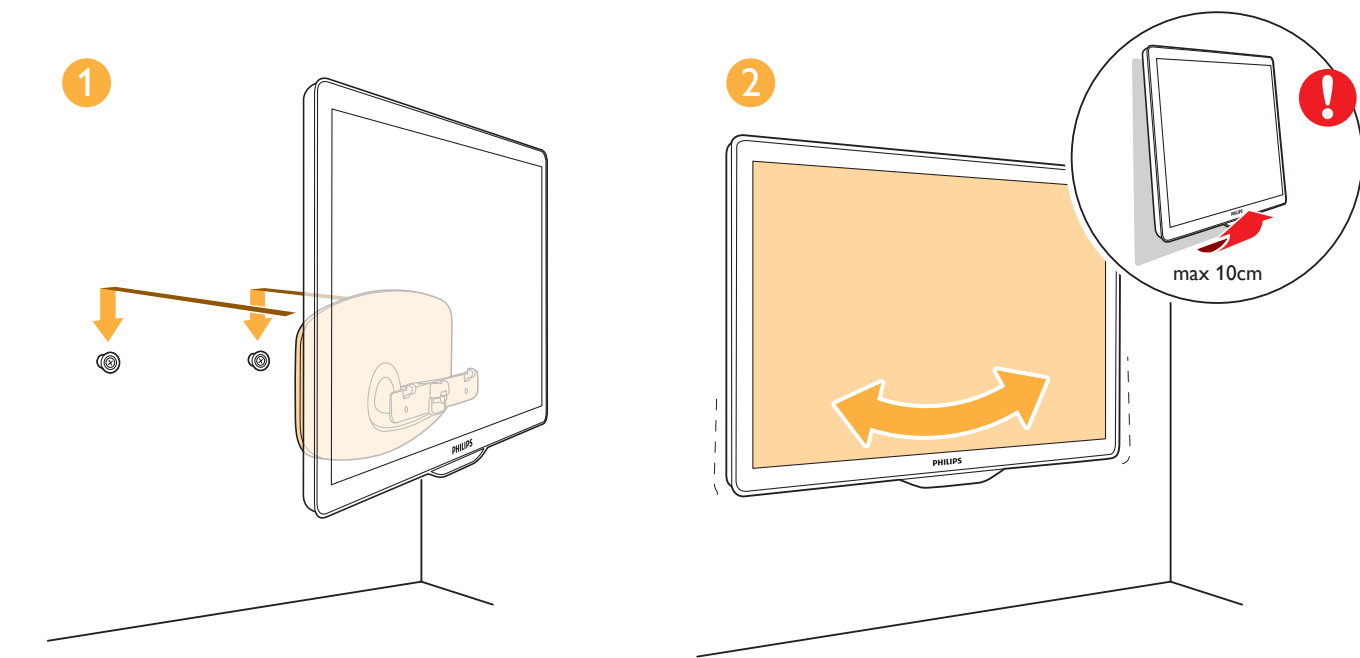


3
计算理想位置
Calculate the ideal position

将 2 个圆盘固定到墙上
Fix the 2 discs to the wall

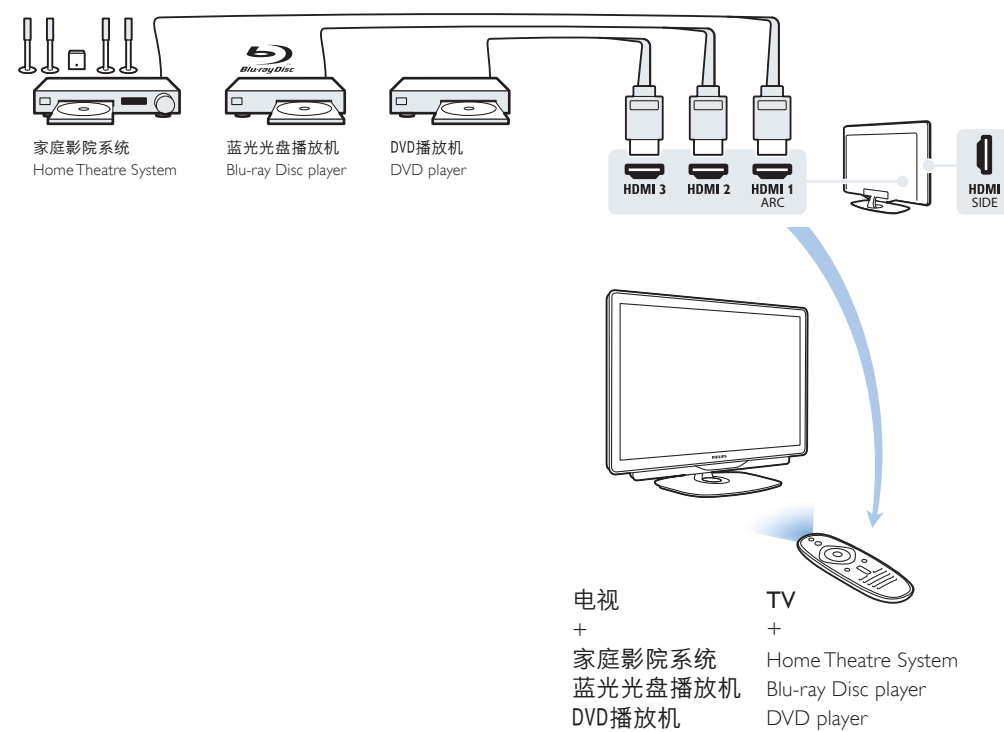


4
安装电视
Mount the TV



6

5



为了获得最佳的画质，建议使用 HDMI 连接您的设备。如果设备具有 HDMI-CEC，则可以使用电视遥控器操作设备。

For best picture quality, we recommend to connect your devices with HDMI. If the device features HDMI-CEC, you can use the TV remote control to operate the device.



Ambilight



Picture



Sound



Net TV

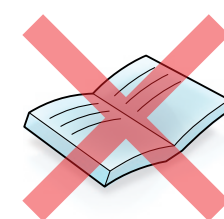
安装过程可帮助您设置流光溢彩、画面和声音以及无线 **Net TV** 连接。

The installation helps you to set up the Ambilight, picture and sound settings and the Net TV connection.

观看电视
Watch TV



Register your product and get support at ...
www.philips.com/welcome



屏幕上帮助
Help on screen



www.philips.com/support

飞利浦通过屏幕显示用户手册，而不采用纸张印刷，为保护环境出一份力。要了解如何使用电视，您可以在任意时候选择主菜单中的“帮助”。如果您需要打印某个页面，请转到飞利浦支持网站下载用户手册。

Philips preserves the environment by presenting the user manual on screen and not on paper. To learn how to use the TV, select Help in the Home menu and read the user manual any time. If you need to print out a page, go to the Philips support website to download the user manual.



Specifications are subject to change without notice.
Trademarks are the property of Koninklijke Philips Electronics N.V. or their respective owners.
2011 © Koninklijke Philips Electronics N.V. All rights reserved.

www.philips.com

Non-contractual images. / Images non contractuelles. / Außervertragliche Bilder.
All registered and unregistered trademarks are property of their respective owners.



Printed in Hungary



310041572311

执行

Start

PHILIPS