

Philips Essence  
LCD TV with Perfect Pixel  
HD Engine

107 cm (42")  
DVB-T

Essence

42PES0001D



# Nothing but a picture on your wall

The Essence TV combines cutting-edge HD technology with an ultra-thin stylish design. The screen is connected to the connectivity hub with a single cable, preventing cable clutter around your screen.

## **Stylish and elegant design**

- Super-slim screen with minimalist design
- Single-cable connectivity hub to avoid cable clutter

## **Perfect LCD Picture**

- Perfect Pixel HD Engine for unrivalled sharpness and clarity
- HD ready 1080p for highest quality display of Full HD images
- Perfect Natural Motion for ultra-smooth Full HD movies
- 100 Hz Clear LCD, 2 ms performance for superb motion sharpness
- 2250 trillion colours processing
- Dynamic contrast 66000:1 for incredible rich black details

## **Easy to connect and enjoy**

- Hassle-free wall hanging with smart levelling bracket
- DLNA PC network link to browse PC and Home network content

## **Ready for digital**

- Integrated Digital Tuner for DVB-T reception

# PHILIPS

# Highlights

## Perfect Pixel HD Engine

Experience unrivalled sharpness and clarity with Perfect Pixel HD Engine. Each pixel of the picture is enhanced to match the surrounding pixels better, resulting in a more natural picture. The result is a unique combination of sharpness, natural detail, vivid colours, superior contrast and smooth natural motion whatever you are watching. Clean and razor sharp images result from artefact and noise detection and reduction in all content sources — from multimedia to standard TV.

## Full HD LCD display 1920 x 1080p

Enjoy the exceptional picture quality of Full High Definition TV signals of HD sources like HDTV broadcast, or Blu-ray DVD. HD ready 1080p is a protected label that offers picture quality far beyond that of ordinary HD Ready. It conforms to strict standards laid out by EICTA to offer a Full HD screen that displays the benefits of resolution and picture quality of

a Full HD 1920 x 1080p High Definition TV signal. It has a universal connection for both analogue YPbPr and uncompressed Digital connection of DVI or HDMI, supporting HDCP. It can display 1080p progressive signals at 24, 50 and 60 Hz.

## 100 Hz Clear LCD (2 ms)

100 Hz Clear LCD creates extreme motion sharpness. The Double Frame Rate Insertion increases the sharpness of motion reproduction to more than twice that of conventional LCD, resulting in a performance with a response time of 2 milliseconds. Now you can enjoy clear images even with fast on-screen motion.

## Essence smart levelling bracket

The Essence smart levelling bracket allows hassle-free mounting of the screen on the wall. The Essence smart levelling bracket has a curved shape and is easy to mount on the wall.

The screen can be easily hooked onto the bracket via the connectors on the back of the screen. The screen can be easily levelled, even when the bracket is not mounted straight.

## Essence screen

The Essence screen is a super-slim screen with minimalist design and real materials. The thinness of the screen makes the picture hug your wall. The frame around the picture is so small that it does only what it is intended for: framing the picture.

## Single-cable connectivity hub

There is only one cable between the connectivity hub and screen. All cable clutter can be placed out of sight and connected through the connectivity hub. The cable includes power to the screen, so no additional power input is required for the screen.

# Specifications

## Picture/Display

- Aspect ratio: Widescreen
- Brightness: 500 cd/m<sup>2</sup>
- Dynamic screen contrast: 66000:1
- Response time (typical): 2 (BEW equiv.) ms
- Viewing angle: 176° (H)/176° (V)
- Diagonal screen size: 42 inch / 107 cm
- Display screen type: LCD Full HD W-UXGA Act. matrix
- Panel resolution: 1920 x 1080p
- Picture enhancement: Perfect Pixel HD Engine, Perfect Natural Motion, Perfect Contrast, 3/2 - 2/2 motion pull down, 3D Combfilter, 100 Hz Clear LCD, Jagged Line Suppression, Progressive scan, 1080p 24/25/30 Hz processing, 1080p 50/60 Hz processing
- Screen enhancement: Anti-Reflection coated screen
- Colour processing: 2250 trillion colours 17bit RGB
- Colour cabinet: Black metal decofront with black back cover

## Supported Display Resolution

### Computer formats

Resolution	Refresh rate
640 x 480	60 Hz
800 x 600	60 Hz
1024 x 768	60 Hz
1280 x 768	60 Hz
1360 x 768	60 Hz
1920 x 1080i	60 Hz
1920 x 1080p	60 Hz

### Video formats

Resolution	Refresh rate
480i	60 Hz
480p	60 Hz
576i	50 Hz
576p	50 Hz
720p	50, 60 Hz
1080i	50, 60 Hz
1080p	24, 50, 60 Hz
1080p	24, 25, 30 Hz

## Sound

- Output power (RMS): 2 x 15 W
- Sound Enhancement: Auto Volume Leveller, Digital Signal Processing, Dynamic Bass Enhancement, Graphic Equalizer, Smart Sound
- Sound System: Virtual Dolby Digital, BBE

## Loudspeakers

- Loudspeaker types: 2 integrated subwoofers, 2 x Dome tweeter, Detachable speaker bar

## Convenience

- Child Protection: Child Lock+Parental Control
- Ease of Installation: Auto Programme Naming, Automatic Channel Install (ACI), Automatic Tuning System (ATS), Autostore, Fine Tuning, PLL Digital Tuning, Plug and Play
- Ease of Use: 4 favourite lists, Auto Volume Leveller (AVL), Delta Volume per preset, Graphical User Interface, On-Screen Display, Programme List, Settings assistant Wizard, Side Control
- Electronic Programme Guide: Now + Next EPG, 8-day Electronic Programme Guide
- Picture in Picture: Text dual screen
- Remote Control: Universal
- Remote control type: RC4480
- Screen Format Adjustments: 4:3, Auto Format, Movie expand 14:9, Movie expand 16:9, Subtitle and Heading Shift, Super Zoom, Widescreen, unscaled (1080p dot by dot)
- Teletext: 1200-page Hypertext
- Teletext enhancements: Habit Watch, Programme information Line
- Firmware upgradeable: Firmware auto upgrade wizard, Firmware upgradeable via USB
- Multimedia: Digital media reader (browser), USB autobreak-in
- Smart mode: Game, Movie, Personal, Power saver, Standard, Vivid

## Multimedia Applications

- Multimedia connections: USB
- Playback Formats: MP3, Slideshow files (.alb), JPEG Still pictures, MPEG1, MPEG2

## Tuner/Reception/Transmission

- Aerial Input: 75 ohm coaxial (IEC75)
- TV system: DVB COFDM 2K/8K
- Video Playback: NTSC, SECAM, PAL
- Digital TV: DVB Terrestrial\*
- Tuner bands: Hyperband, S-Channel, UHF, VHF

## Connectivity

- Ext 1 Scart: Audio L/R, CVBS in/out, RGB
- Ext 2 Scart: Audio L/R, CVBS in/out, RGB
- Ext 3: YPbPr, Audio L/R in, VGA PC-in

- Ext 4: HDMI v1.3
- Ext 5: HDMI v1.3
- EasyLink (HDMI-CEC): One touch play, System audio control, System standby
- Front/Side connections: HDMI v1.3, S-video in, CVBS in, Audio L/R in, Headphones Out, USB
- PC network link: DLNA 1.0 certified
- Other connections: Analogue audio Left/Right out, S/PDIF out (coaxial), Common Interface

## Power

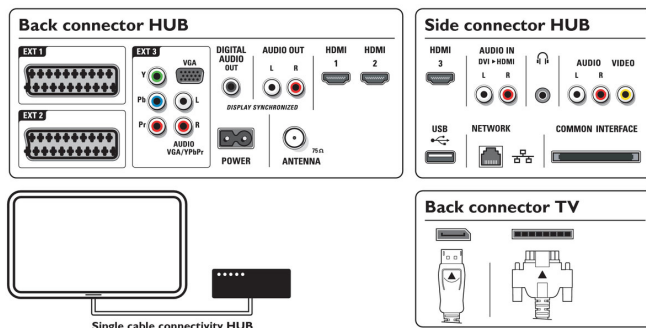
- Ambient temperature: 5°C to 35°C
- Mains power: AC 220-240 V +/- 10%
- Power consumption: 236 W
- Power (Energy-saving mode): 164 W
- Standby power consumption: 0.40 W

## Dimensions

- Screen dimensions (W x H x D): 982 x 662.5 x 38\* mm
- Screen weight: 16.5 kg
- Screen dimensions with stand (W x H x D): 982 x 685 x 240 mm
- Screen weight (with stand): 20 kg
- Hub dimensions (W x H x D): 320 x 84 x 320 mm
- Hub weight: 4.7 kg
- Diameter Essence single-cable: 14 mm
- Length Essence single-cable: 4 m
- Weight incl. Packaging: 38 kg
- Box dimensions (W x H x D): 1163 x 813 x 320 mm
- VESA wall mount compatible: 300 x 300 mm

## Accessories

- Included accessories: Tabletop stand, Essence single-cable, Smart levelling wall bracket, Power cord, Quick start guide, User Manual, Warranty certificate, Remote Control, Batteries for remote control



Issue date 2019-11-12

Version: 6.2.12

12 NC: 8670 000 42226  
EAN: 87 12581 44292 7

© 2019 Koninklijke Philips N.V.  
All Rights reserved.

Specifications are subject to change without notice.  
Trademarks are the property of Koninklijke Philips N.V.  
or their respective owners.

[www.philips.com](http://www.philips.com)

\* DVB-T, supported in selected countries only  
\* Maximum depth of the screen: 49.8 mm