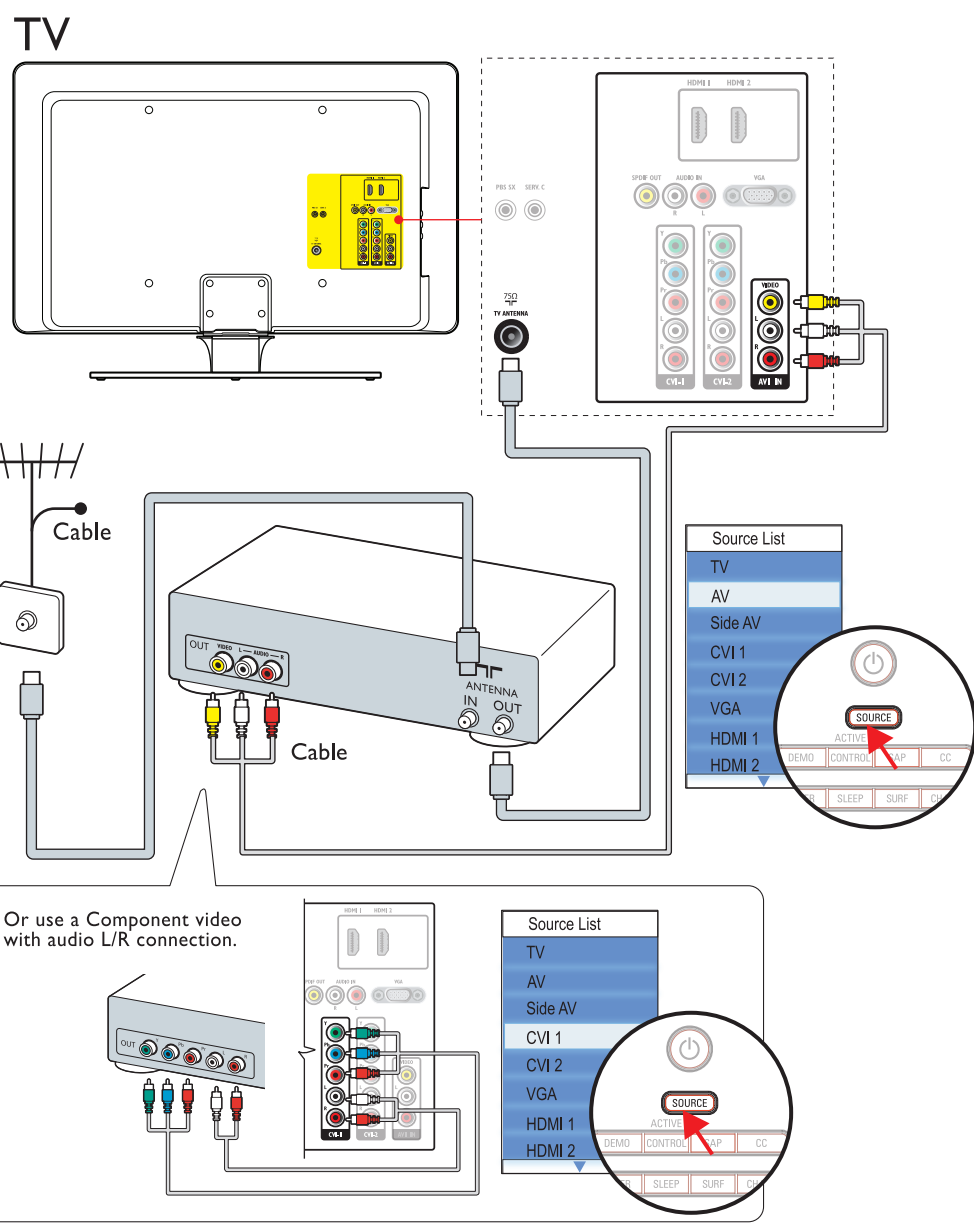
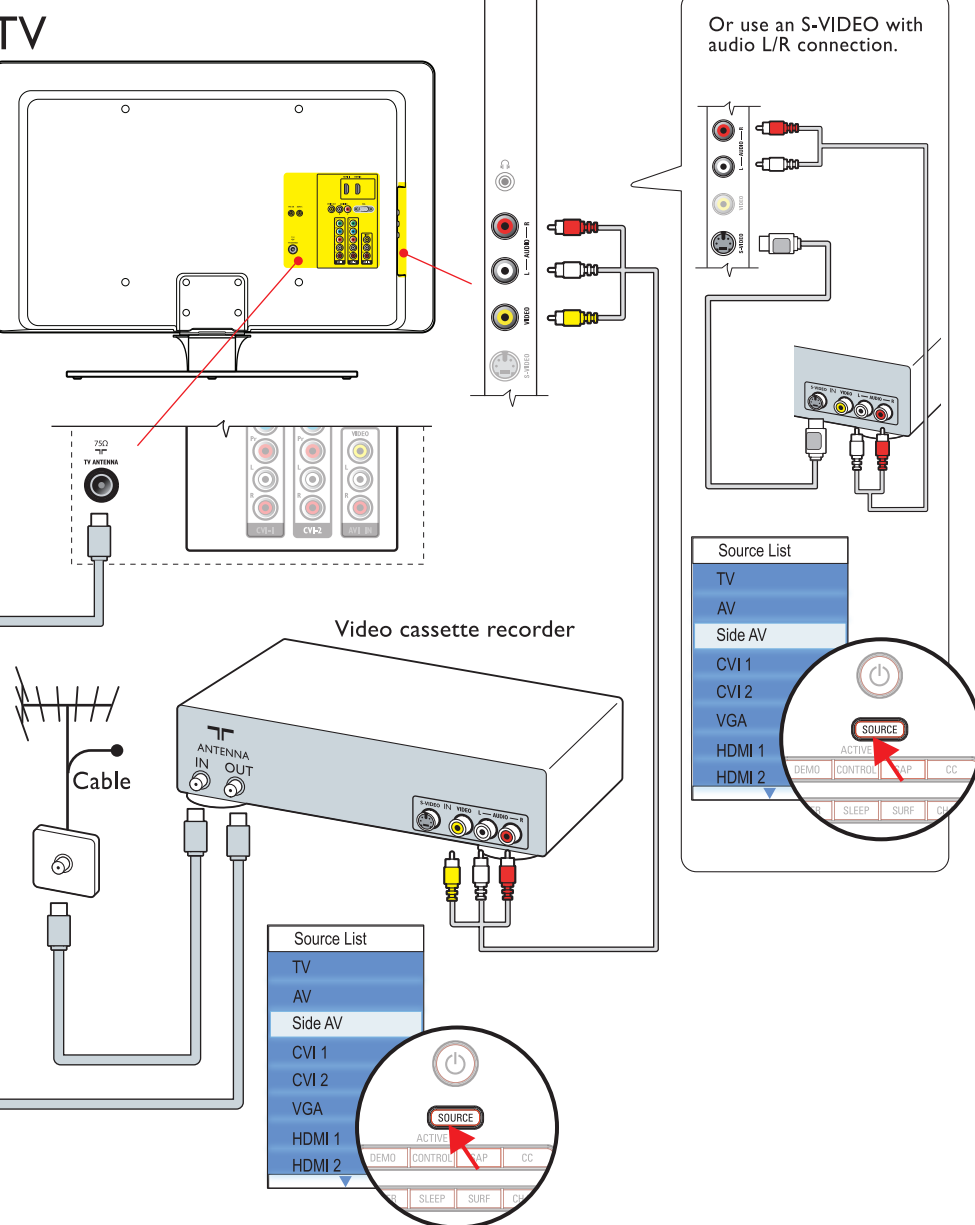


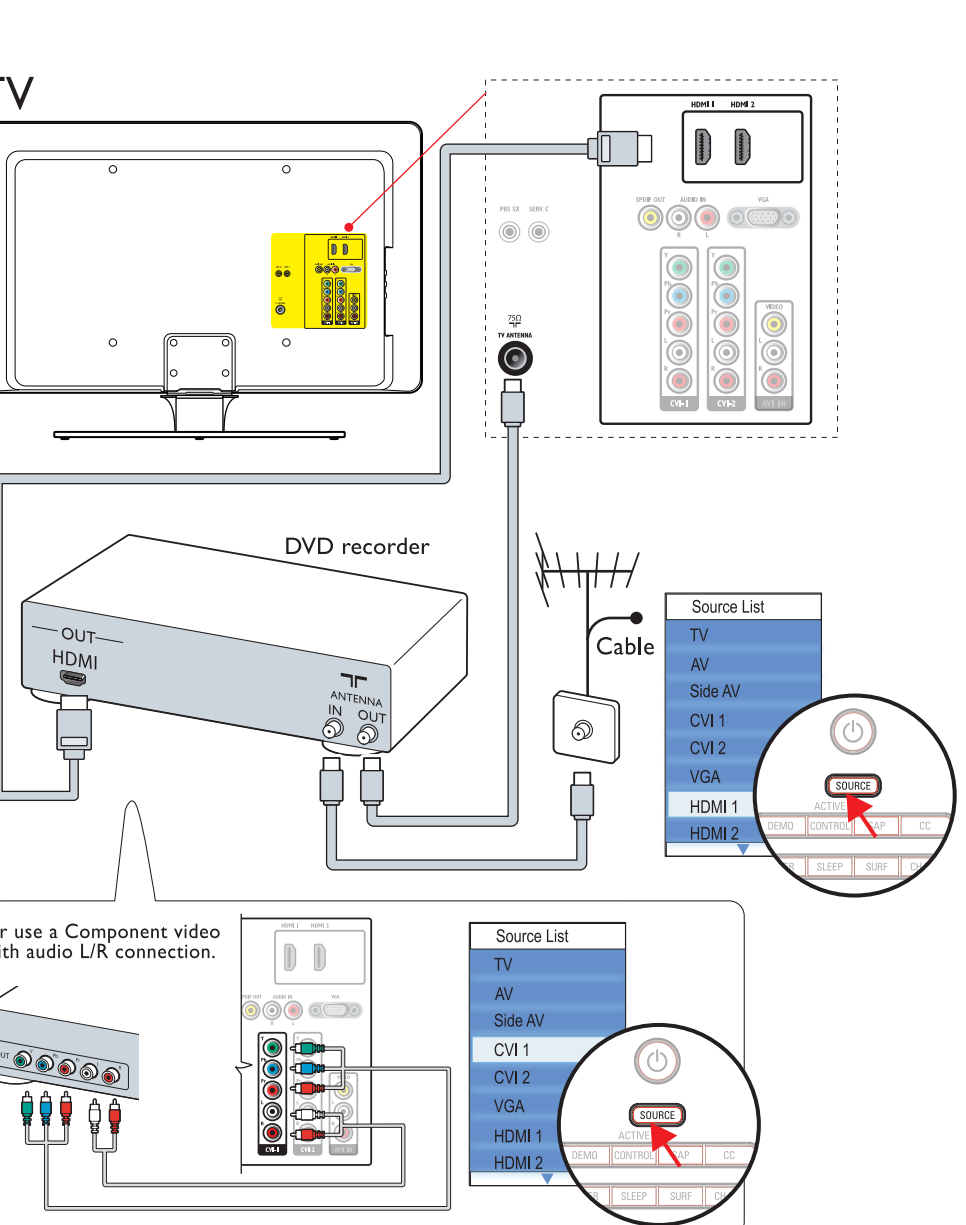
Cable receiver, HD cable receiver



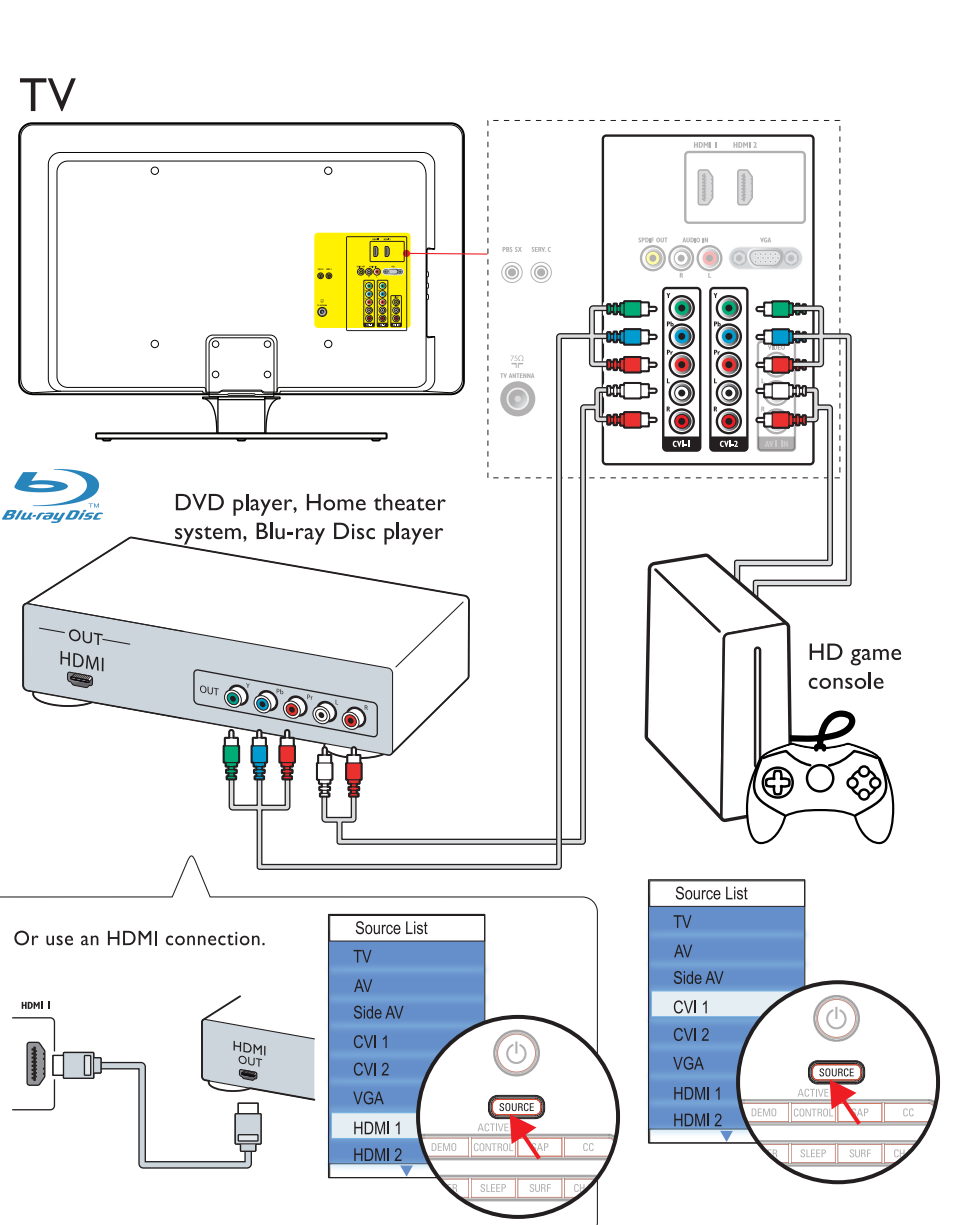
Video cassette recorder



DVD recorder

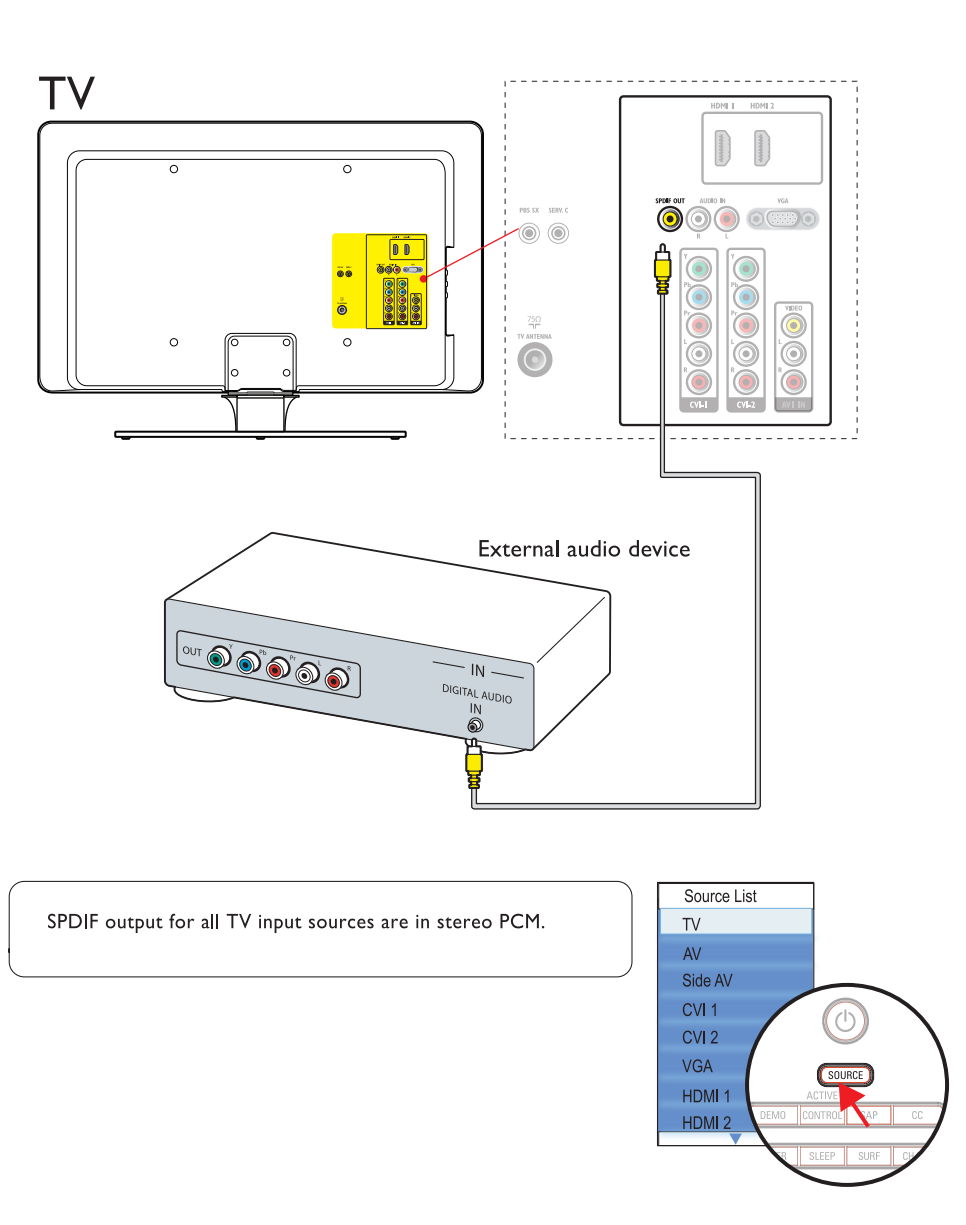


DVD player, Home theater system, Blu-ray Disc player HD game console

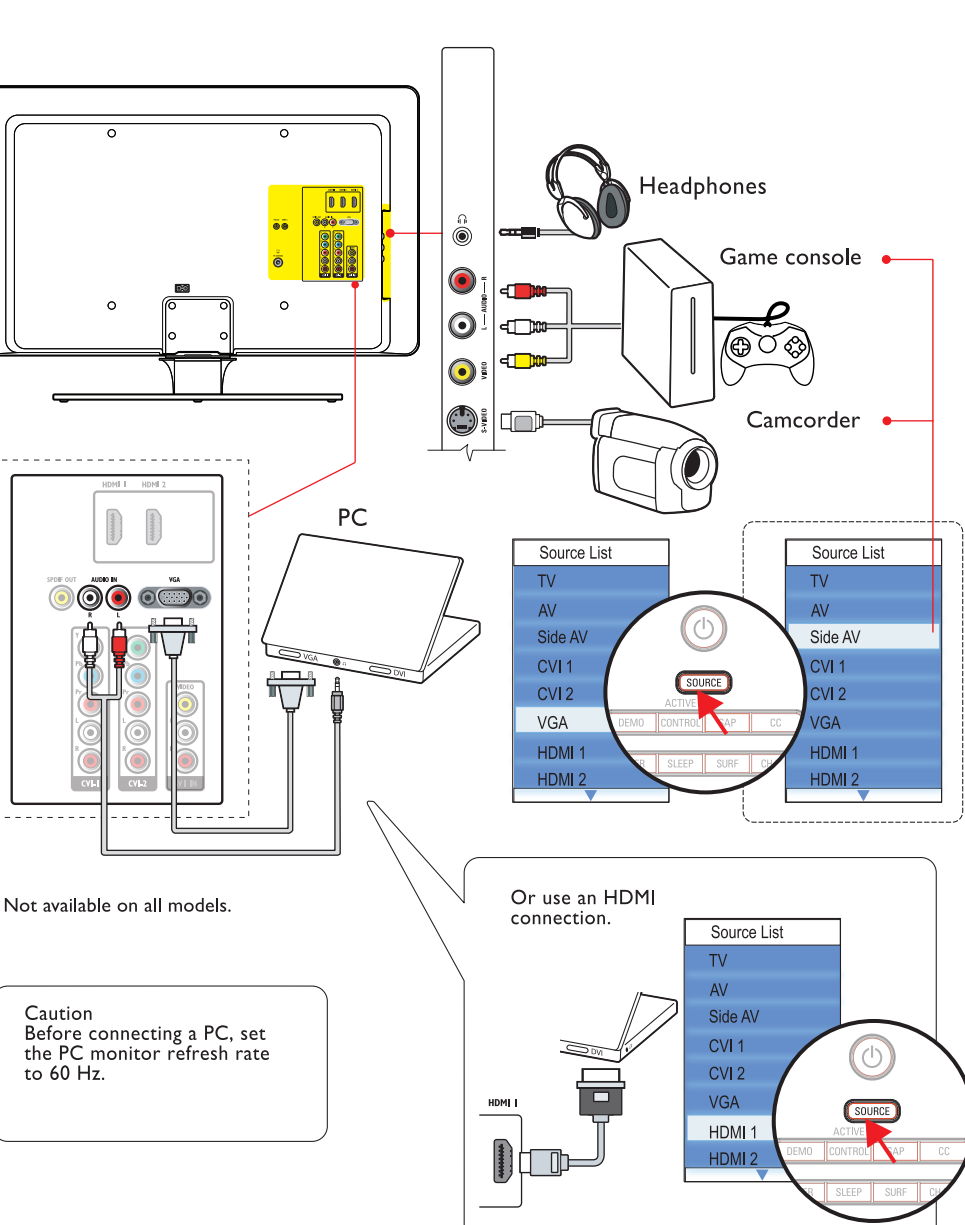


External audio device*

* Not available on all models.



Headphones, game console, camcorder, PC

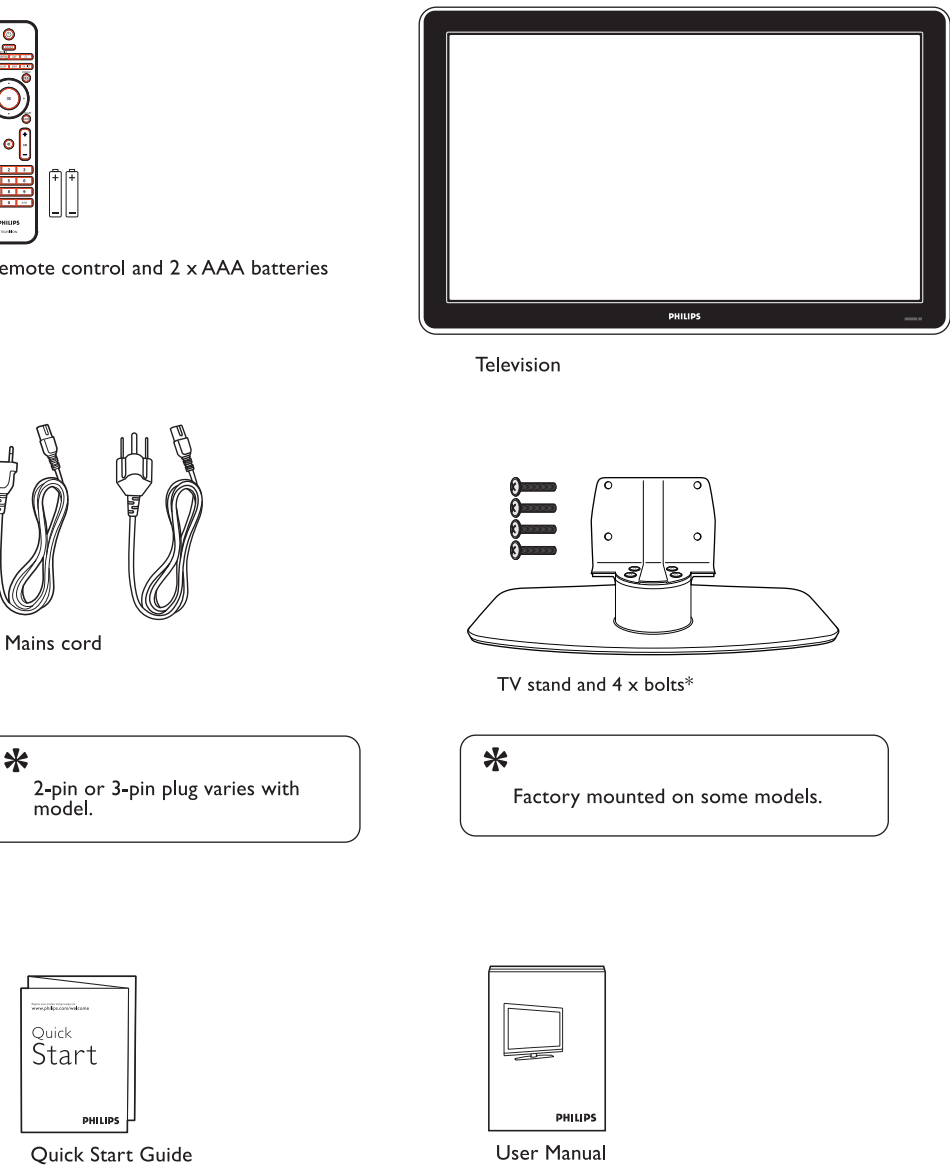


Quick Start Guide

Installation

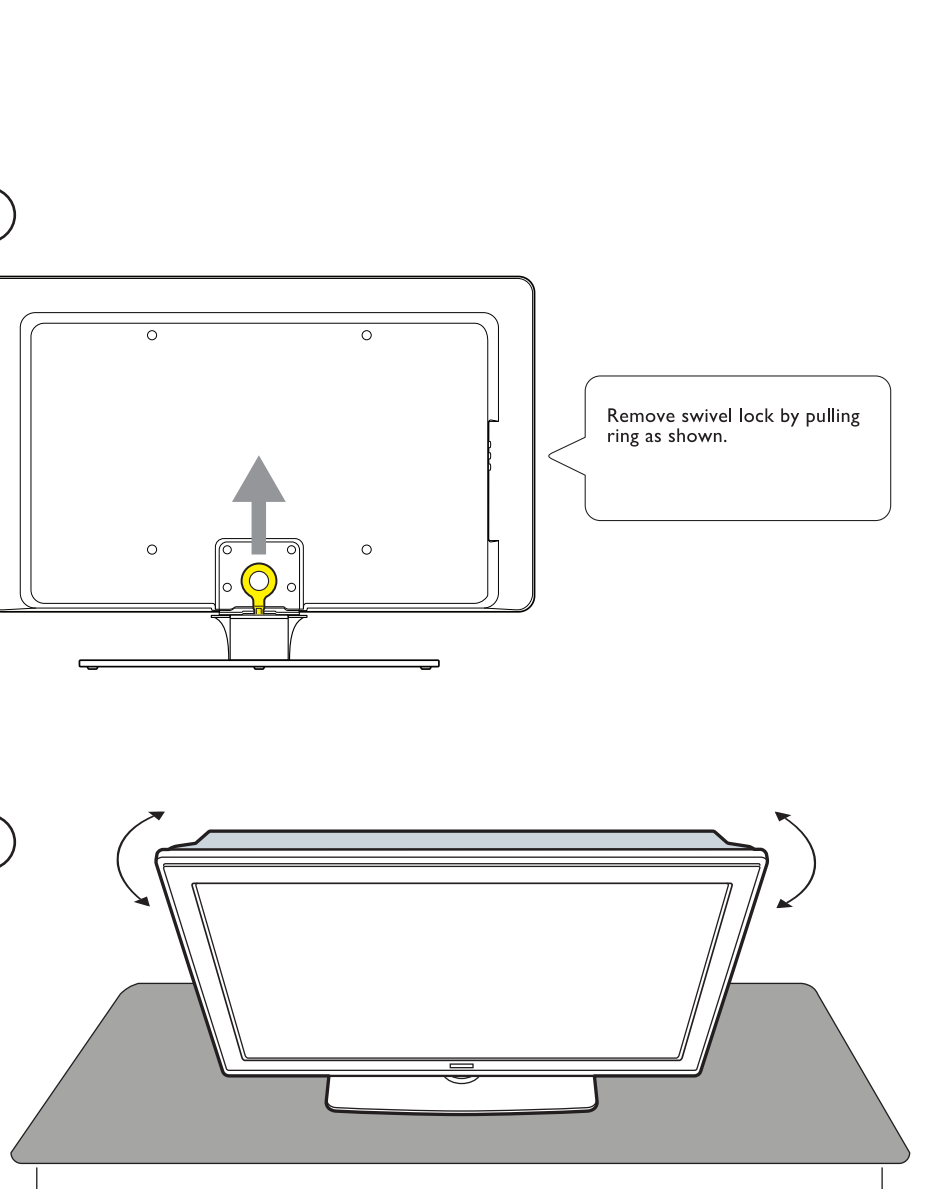
PHILIPS

What's in the box



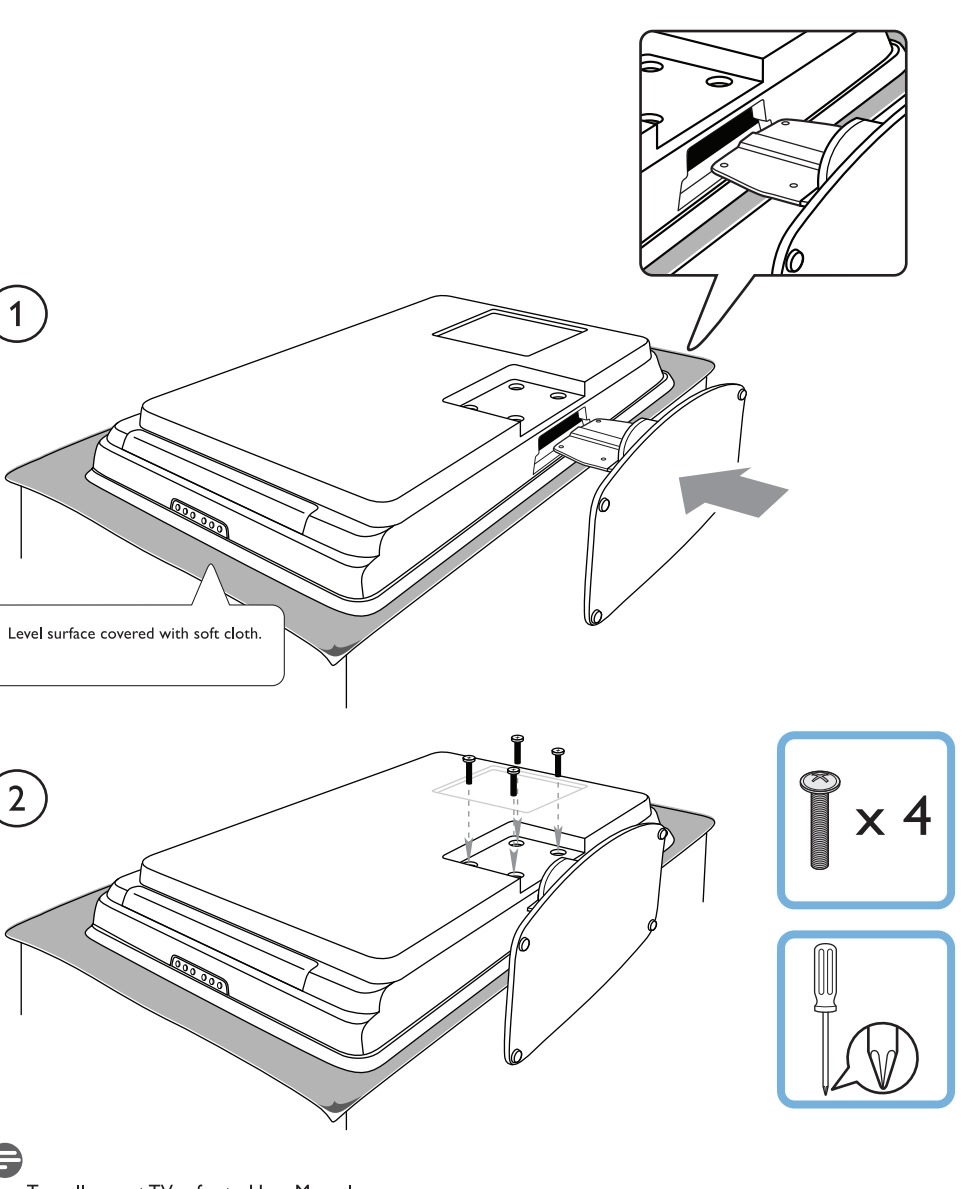
Remove the swivel lock*

* For 42" sets and above.

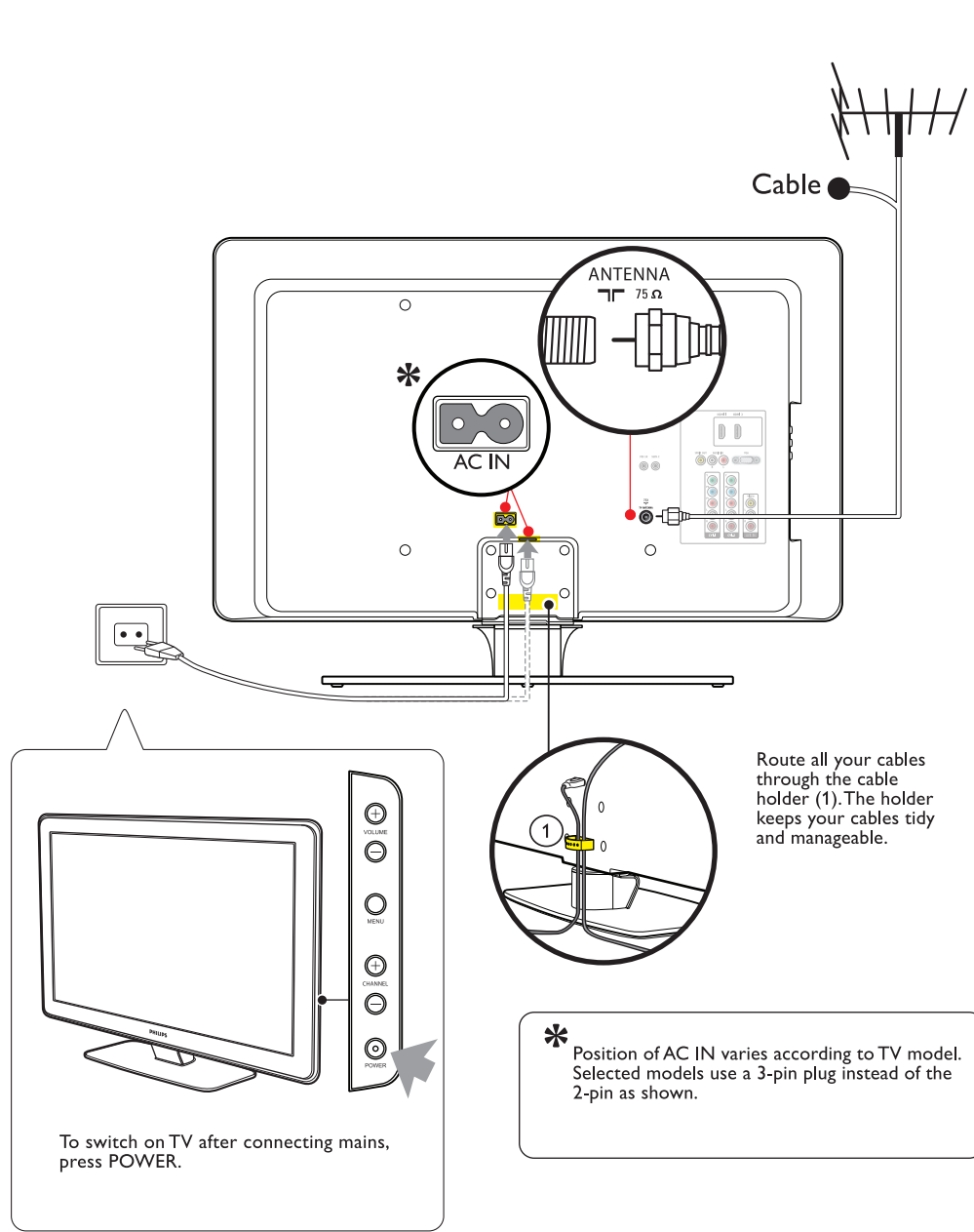


Stand mount the TV*

* For 32" sets.

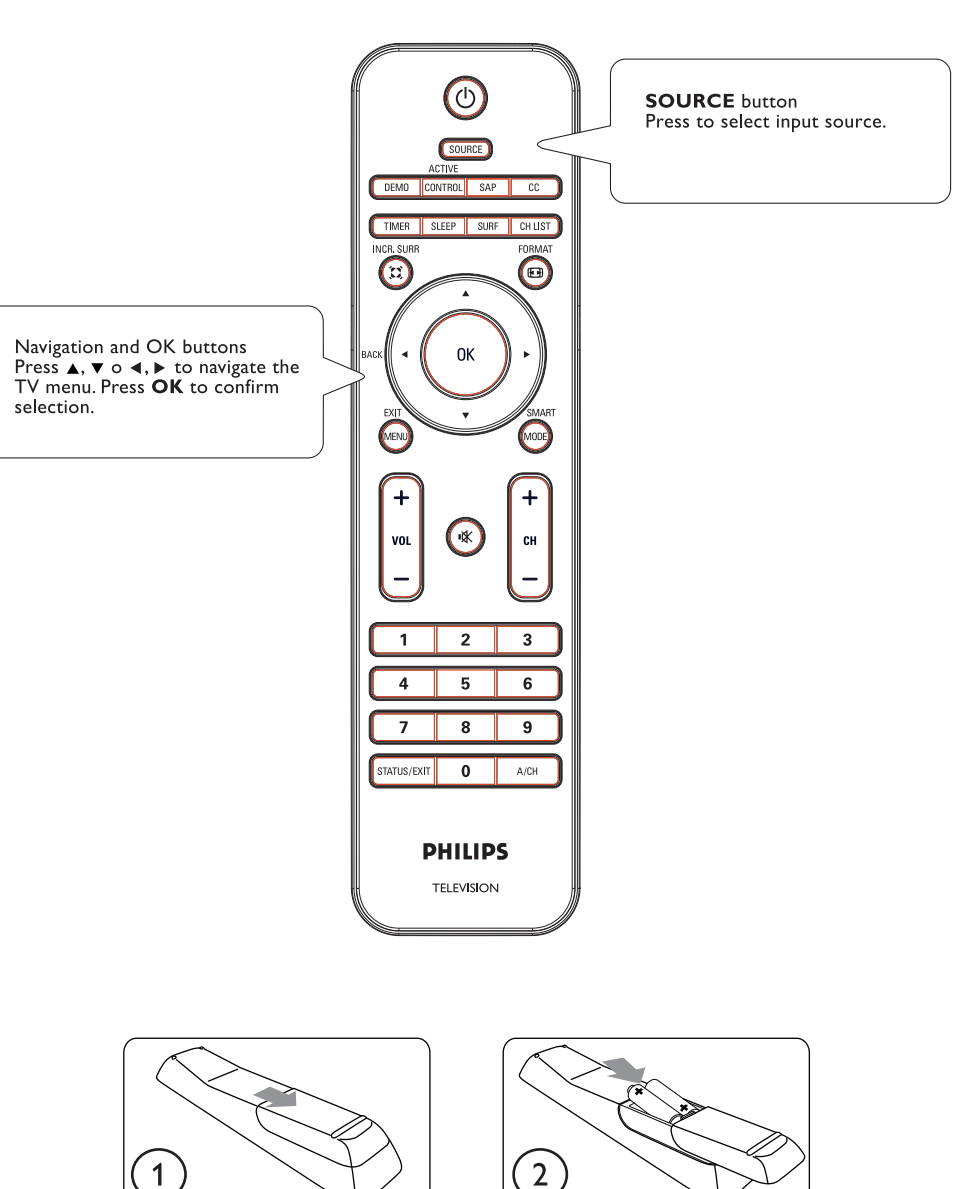


Connect the mains* and antenna

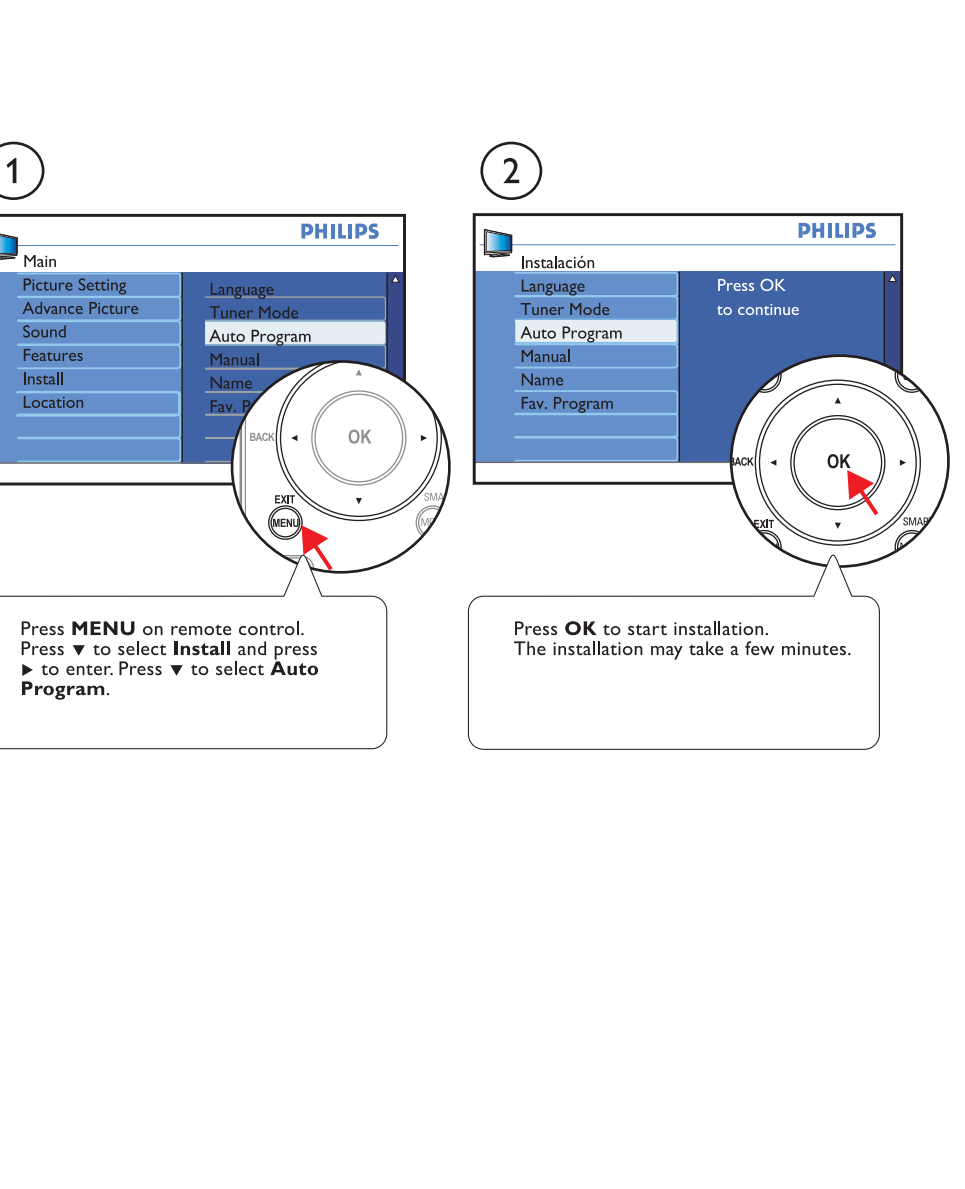


Use the remote control*

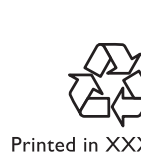
* Remote control may differ according to TV model.



Program installation



Specifications are subject to change without notice.
Trademarks are the property of Koninklijke Philips Electronics N.V.
or their respective owners.
2007 © Koninklijke Philips Electronics N.V. All rights reserved.
www.philips.com



Printed in XXX

3139 125 0000x