

Register your product and get support at
www.philips.com/welcome

32PFL3605D/78

40PFL3605D/78




EN User manual

PHILIPS

Informações Importantes

Leia antes de ligar o aparelho

1. Leia e guarde estas instruções, tome cuidado com todos os alertas.
2. Não use este aparelho próximo à água, chuva ou umidade.
3. Limpe a tela e o gabinete com um pano de algodão ou outro material que seja extremamente macio, não utilize produtos químicos.
4. Não toque, aperte ou esfregue a superfície da tela.
5. Limpe a tela imediatamente em caso de respingos ou condensação.
6. Não bloqueie qualquer uma das aberturas de ventilação. Instale de acordo com as instruções fornecidas, deixando pelo menos 15 cm de espaço livre na parte de cima, baixo e nos lados do TV.
7. Não instale perto de qualquer fonte de calor, como aquecedores, registros de calor, fogões e quaisquer outros aparelhos (inclusive amplificadores) que produzam calor.
8. Não instale o cabo de alimentação de energia de forma que ele não seja pisado ou apertado, especialmente nos plugues, nas tomadas e no ponto onde ele sai do aparelho.
9. Use somente os acessórios/suplementos especificados pelo fabricante.
10.  Use somente com uma mesa, estante, rack ou carrinho que suporte o peso do aparelho. Quando for transportar o TV com um carrinho, tome cuidado evitando que o mesmo tombe.
11. **Inclinação/estabilidade** - Todos os televisores devem obedecer aos padrões de segurança internacionais recomendados em termos de inclinação e estabilidade do seu gabinete.
 - Não comprometa esses padrões de projeto puxando com força excessiva a parte frontal ou superior do gabinete, o que pode fazer o produto tombar.
12. Desligue o aparelho da tomada quando:
 - A. Estiver ocorrendo uma tempestade com raios.
 - B. O aparelho não for usado por um período prolongado.
13. **Danos que requerem conserto** - O aparelho deve ser reparado por pessoal de assistência técnica qualificado quando:
 - A. O cabo ou o plugue de alimentação de energia tiver sido danificado.
 - B. Algum objeto tiver caído ou líquido tiver sido derramado dentro do aparelho.
 - C. O aparelho tiver sido exposto à chuva.
 - D. O aparelho não parecer estar operando normalmente ou exibir uma perda de desempenho significativa.
 - E. O aparelho tiver sido derrubado ou seu gabinete tiver sido danificado.
 - F. Quando a luz azul, verde ou vermelha abaixo da tela estiver piscando.
14. **Montagem em parede ou no teto** - O aparelho deve ser montado em uma parede ou no teto somente de acordo com as recomendações do fabricante.

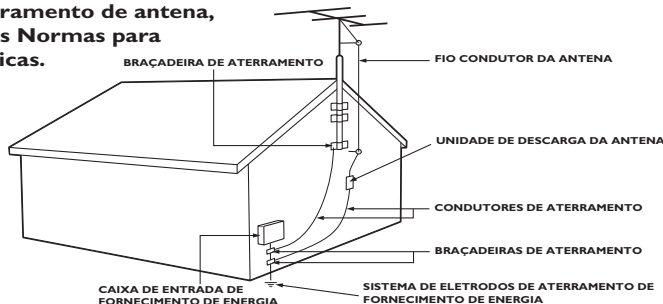
15. **Linhas de energia** - Uma antena externa deve ficar afastada de linhas de energia.
16. **Aterramento de antena externa** - Caso uma antena externa seja conectada ao receptor, assegure-se de que o sistema de antena seja aterrado, para proporcionar uma certa proteção contra surtos elétricos e cargas acumuladas de eletricidade estática.
17. **Entrada de líquidos e objetos** - Deve-se tomar cuidado para que objetos não caiam e líquidos não sejam derramados dentro do gabinete do aparelho através de suas aberturas.
18. **CUIDADO com o uso de pilhas/baterias** - Para prevenir vazamentos de pilhas/baterias, que podem resultar em lesões corporais, danos a objetos ou danos à unidade:
 - Instale todas as pilhas/baterias corretamente, com os sinais + e -, conforme indicado no controle remoto.
 - Não misture pilhas/baterias (novas com velhas, normais com alcalinas, etc.).
 - Remova as pilhas/baterias quando o controle remoto não for utilizado por um longo período de tempo.
 - AS PILHAS NÃO ESTÃO INCLuíDAS NA GARANTIA ADICIONAL DO PRODUTO.
19. **CUIDADO! Evite o uso prolongado do aparelho com volume superior a 85 decibéis, pois isto poderá prejudicar a sua audição.**
 - A tabela abaixo lista alguns exemplos de situações e respectivos níveis de pressão sonora em decibéis.

Nível de Decibéis	Exemplo
30	Biblioteca silenciosa, sussurros leves.
40	Sala de estar, refrigerador, quarto longe de trânsito.
50	Trânsito leve, conversa normal, escritório silencioso.
60	Ar-condicionado a uma distância de 6m, máquina de costura.
70	Aspirador de pó, secador de cabelo, restaurante ruidoso.
80	Tráfego médio de cidade, coletor de lixo, alarme de despertador a uma distância de 60 cm.
OS RUIDOS ABAIXO PODEM SER PERIGOSOS EM CASO DE EXPOSIÇÃO CONSTANTE	
90	Metró, motocicleta, tráfego de caminhão, cortador de grama.
100	Caminhão de lixo, serra elétrica, furadeira pneumática.
120	Show de banda de rock em frente às caixas acústicas, trovão.
140	Tiro de arma de fogo, avião a jato
180	Lançamento de foguete.

- Informação cedida pela Deafness Research Foundation, por cortesia.

Nota para o instalador de sistema de TV a cabo: Tenha atenção para um aterramento adequado. O cabo terra deve ser conectado ao sistema de aterramento do edifício ou residência.

Exemplo de aterramento de antena, de acordo com as Normas para Instalações Elétricas.



Contents

1 Notice	2	7 Connect devices	21
2 Important	3	Back connector	21
3 Your TV	5	Bottom connector	21
Side controls and indicators	5	Side connector	21
Remote control	5	Connect a computer	22
4 Use your TV	7	Use Philips EasyLink	23
Switch your TV on/off or to standby	7	Use a Kensington lock	24
Switch channels	7	8 Product information	25
Watch connected devices	8	Supported display resolutions	25
Adjust TV volume	8	Multimedia	25
5 Use more of your TV	9	Tuner/Reception/Transmission	25
Access TV menus	9	Remote control	25
Remove devices from the home menu	9	Power	25
Change picture and sound settings	9	Supported TV mounts	26
Create and use list of favorite channels	12	Product specification	26
Use the Electronic Program Guide	13	9 Troubleshooting	27
Use the TV clock	13	General TV issues	27
Use timers	14	TV channel issues	27
Use TV locks	15	Picture issues	27
Display closed captions	16	Sound issues	28
View photos and play music from a USB storage device	16	HDMI connection issues	28
Update the TV software	18	Computer connection issues	28
Change TV preferences	19	Contact us	28
Start a TV demo	19	10 Index	29
Reset the TV to factory settings	19		
6 Install channels	20		
Automatically install channels	20		
Select installation mode	20		
Test digital reception	20		
Rename channels	20		

1 Notice

2010 © Koninklijke Philips Electronics N.V. All rights reserved.

Specifications are subject to change without notice. Trademarks are the property of Koninklijke Philips Electronics N.V or their respective owners. Philips reserves the right to change products at any time without being obliged to adjust earlier supplies accordingly. The material in this manual is believed adequate for the intended use of the system. If the product, or its individual modules or procedures, are used for purposes other than those specified herein, confirmation of their validity and suitability must be obtained. Philips warrants that the material itself does not infringe any United States patents. No further warranty is expressed or implied.

Warranty

- Risk of injury, damage to TV or void of warranty! Never attempt to repair the TV yourself.
- Use the TV and accessories only as intended by the manufacturer.
- The caution sign printed on the back of the TV indicates risk of electric shock. Never remove the TV cover. Always contact Philips Customer Support for service or repairs.



- Any operation expressly prohibited in this manual, or any adjustments and assembly procedures not recommended or authorised in this manual shall void the warranty.

Pixel characteristics

This LCD product has a high number of color pixels. Although it has effective pixels of 99.999% or more, black dots or bright points of light (red, green or blue) may appear constantly on the screen. This is a structural property of the display (within common industry standards) and is not a malfunction.

Open source software

This television contains open source software. Philips hereby offers to deliver or make available, upon request, for a charge no more than the cost of physically performing source distribution, a complete machine-readable copy of the corresponding source code on a medium customarily used for software interchange. This offer is valid for a period of 3 years after the date of purchase of this product. To obtain the source code, write to:

Development Manager
Technology & Development
Philips Consumer Lifestyle
620A Lorong 1, Toa Payoh
TP1, Level 3
Singapore 319762

Copyright

® Kensington and Micro Saver are registered US trademarks of ACCO World corporation with issued registrations and pending applications in other countries throughout the world.



HDMI, and HDMI logo and High-Definition Multimedia Interface are trademarks or registered trademarks of HDMI licensing LLC. All other registered and unregistered trademarks are the property of their respective owners.

2 Important

Read and understand all instructions before you use your TV. If damage is caused by failure to follow instructions, the warranty does not apply.

Safety

Risk of electric shock or fire!

- Never expose the TV to rain or water. Never place liquid containers, such as vases, near the TV. If liquids are spilt on or into the TV, disconnect the TV from the power outlet immediately. Contact Philips Consumer Care to have the TV checked before use.
- Never place the TV, remote control or batteries near naked flames or other heat sources, including direct sunlight. To prevent the spread of fire, keep candles or other flames away from the TV, remote control and batteries at all times.



- Never insert objects into the ventilation slots or other openings on the TV.
- When the TV is swiveled ensure that no strain is exerted on the power cord. Strain on the power cord can loosen connections and cause arcing.

Risk of short circuit or fire!

- Never expose the remote control or batteries to rain, water or excessive heat.
- Avoid force coming onto power plugs. Loose power plugs can cause arcing or fire.

Risk of injury or damage to the TV!

- Two people are required to lift and carry a TV that weighs more than 55 lbs.

- When stand mounting the TV, use only the supplied stand. Secure the stand to the TV tightly. Place the TV on a flat, level surface that can support the combined weight of the TV and the stand.
- When wall mounting the TV, use only a wall mount that can support the weight of the TV. Secure the wall mount to a wall that can support the combined weight of the TV and wall mount. Koninklijke Philips Electronics N.V. bears no responsibility for improper wall mounting that results in accident, injury or damage.

Risk of injury to children!

Follow these precautions to prevent the TV from toppling over and causing injury to children:

- Never place the TV on a surface covered by a cloth or other material that can be pulled away.
- Ensure that no part of the TV hangs over the edge of the surface.
- Never place the TV on tall furniture (such as a bookcase) without anchoring both the furniture and TV to the wall or a suitable support.
- Educate children about the dangers of climbing on furniture to reach the TV.

Risk of overheating!

- Never install the TV in a confined space. Always leave a space of at least 4 inches or 10 cm around the TV for ventilation. Ensure curtains or other objects never cover the ventilation slots on the TV.

Risk of damage to the TV!

- Before you connect the TV to the power outlet, ensure that the power voltage matches the value printed on the back of the TV. Never connect the TV to the power outlet if the voltage is different.

Risk of injury, fire or power cord damage!

- Never place the TV or any objects on the power cord.
- To easily disconnect the TV power cord from the power outlet, ensure that you have full access to the power cord at all times.

- When you disconnect the power cord, always pull the plug, never the cable.
- Disconnect the TV from the power outlet and antenna before lightning storms. During lightning storms, never touch any part of the TV, power cord or antenna cable.

Risk of hearing damage!

- Avoid using earphones or headphones at high volumes or for prolonged periods of time.

Low temperatures

- If the TV is transported in temperatures below 5°C, unpack the TV and wait until the TV temperature matches room temperature before connecting the TV to the power outlet.

Screen care

- Avoid stationary images as much as possible. Stationary images are images that remain on-screen for extended periods of time. Examples include: on-screen menus, black bars and time displays. If you must use stationary images, reduce screen contrast and brightness to avoid screen damage.
- Unplug the TV before cleaning.
- Clean the TV and frame with a soft, damp cloth. Never use substances such as alcohol, chemicals or household cleaners on the TV.
- Risk of damage to the TV screen! Never touch, push, rub or strike the screen with any object.
- To avoid deformations and color fading, wipe off water drops as soon as possible.

Disposal of your old product and batteries



Your product is designed and manufactured with high quality materials and components, which can be recycled and reused.



When this crossed-out wheeled bin symbol is attached to a product it means that the product is covered by the European Directive 2002/96/EC. Please inform yourself about the local separate collection system for electrical and electronic products.

Please act according to your local rules and do not dispose of your old products with your normal household waste.

Correct disposal of your old product helps to prevent potential negative consequences for the environment and human health.



Your product contains batteries covered by the European Directive 2006/66/EC, which cannot be disposed with normal household waste.

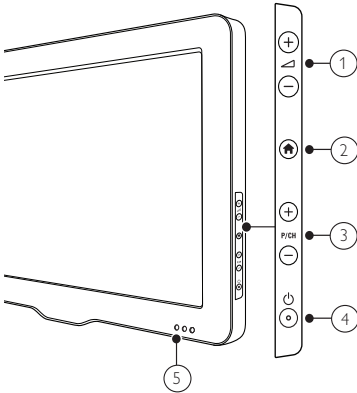
Please inform yourself about the local rules on separate collection of batteries because correct disposal helps to prevent negative consequences for the environmental and human health.

3 Your TV

Congratulations on your purchase, and welcome to Philips! To fully benefit from the support that Philips offers, register your TV at www.philips.com/welcome.

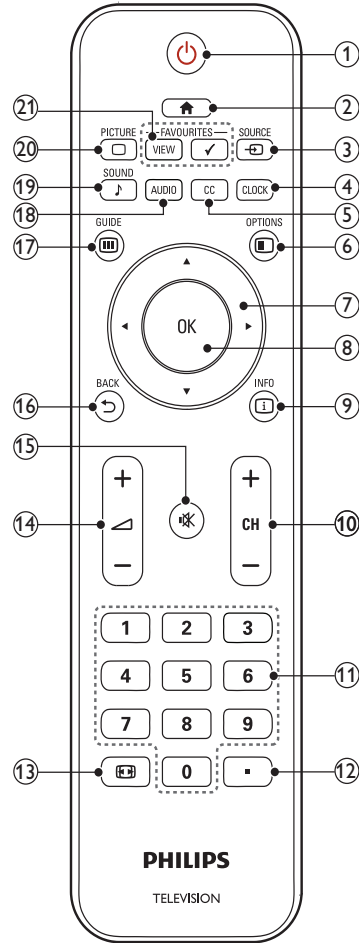
This section gives you an overview of commonly used TV controls and functions.

Side controls and indicators



- ① \triangleleft +/-: Increases or decreases volume.
- ② **Home**: Toggles the home menu on or off.
- ③ **P/CH +/-**: Switches to the next or previous channel.
- ④ **Power**: Switches the product on or off. The product is not powered off completely unless it is physically unplugged.
- ⑤ **Standby indicator and remote control sensor**.

Remote control



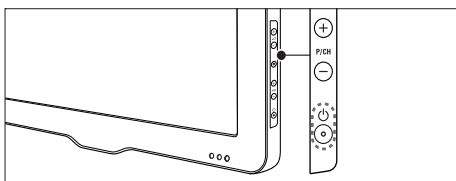
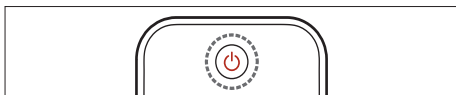
- ① **Standby-On**
 - Switches the TV to standby if it is on.
 - Switches on the TV if it is in standby.
- ② **Home**
Toggles the main menu on or off.
- ③ **SOURCE**
Selects connected devices.
- ④ **CLOCK**
Sets a delay after which the TV switches to standby.

- ⑤ **CC**
Displays closed captions settings.
- ⑥ **☰ OPTIONS**
Displays program information, if available.
- ⑦ **▲▼◀▶ (Navigation buttons)**
Navigates menus.
- ⑧ **OK**
Confirms an entry or selection and displays the channel grid, when watching TV.
- ⑨ **ℹ INFO**
Displays program information, if available.
- ⑩ **CH +/- (Channel +/-)**
Switches to the next or previous channel. When the TV menu is on, this functions as Page Up/Down.
- ⑪ **0-9 (Numeric buttons)**
Selects a channel or setting.
- ⑫ **● (Dot)**
Press the dot (.) for digital channels.
- ⑬ **🖼️ FORMAT**
Toggles through available picture formats. Some formats are not available for some picture sources.
- ⑭ **🔊 +/- (Volume +/-)**
Increases or decreases volume.
- ⑮ **🔇 (Mute)**
Mutes or restores volume.
- ⑯ **↶ BACK**
Returns to a previous screen.
Returns to the previously viewed channel.
- ⑰ **📺 GUIDE**
Switches between channel grid and program list.
- ⑱ **AUDIO**
Selects an audio broadcast.
- ⑲ **🎵 SOUND (Smart Sound)**
Launches the sound menu.
- ⑳ **🖼️ PICTURE (Smart picture)**
Launches the picture menu.
- ㉑ **FAVORITES VIEW / FAVORITES ✓**
Displays a list of all channels marked as favorite.

4 Use your TV

This section helps you perform basic TV operations (see 'Use more of your TV' on page 9).

Switch your TV on/off or to standby



To switch on

- If the standby indicator is off, press **⏻** (Power) at the side of the TV.
- If the standby indicator is red, press **⏻** (Standby-On) on the remote control.

To switch to standby

- Press **⏻** (Standby-On) on the remote control.
 - ↳ The standby indicator switches to red.

To switch off

- Press **⏻** (Power) at the side of the TV.
 - ↳ The standby indicator switches off.



Tip

- Though your TV consumes very little power when in standby, energy continues to be consumed. When not in use for an extended period of time, disconnect the TV power cable from the power outlet.

Switch channels

- Press **CH +/-** on the remote control or **P/CH +/-** on the side of the TV.
- Enter a channel number using the **Numeric buttons**.
- Press **OK** to use the channel grid.
- Press **↩ BACK** on the remote control to return to the previous channel.

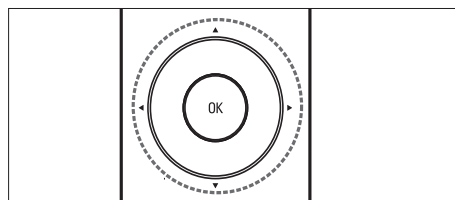


Note

- When you use a favourite list, you can only select those channels in the list (see 'Select a favorite list' on page 12).

Switch channels with the channel grid

The channel grid allows you to view all available channels in a grid format.



- 1 Press **OK**.
 - ↳ The channel grid appears.
- 2 Press **▲▼◀▶** to browse the channel grid and preview a channel.
 - ↳ The channel content is displayed after about two seconds.
- 3 Press **OK** to select a channel.

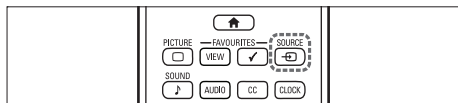
Watch connected devices



Note

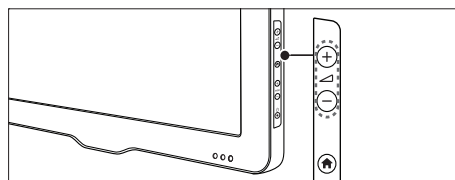
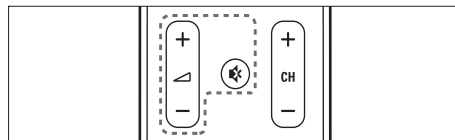
- Switch on the device before selecting it as a source on the TV.

Use the source button



- 1 Press **SOURCE**.
↳ The source list appears.
- 2 Press **▲▼** to select a device.
- 3 Press **OK** to confirm your choice.
↳ The TV switches to the selected device.

Adjust TV volume



To increase or decrease volume

- Press **▲▼**.

To mute or unmute sound

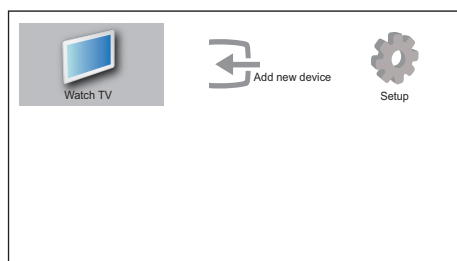
- Press **MUTE** to mute the sound.
- Press **MUTE** again to restore the sound.

5 Use more of your TV

Access TV menus

Menus help you to install channels, change picture and sound settings and access other features.

- 1 Press **⬆** (Home).
↳ The menu screen appears.



- 2 Press the **⬆** to select and navigate through one of the following menus.
 - **[Watch TV]**: Switches back to the antenna source if another source is selected.
 - **[Add new device]**: Adds new devices to the home menu.
 - **[Setup]**: Accesses menus to change picture, sound and other settings.
- 3 Press **OK** to confirm your choice.
- 4 Press **⬆** (Home) to exit.

Tip

- After selecting **[Add new device]**, follow the on-screen instructions to select the correct device and connector.

Remove devices from the home menu

If a device is no longer connected to the TV, remove it from the home menu.

- 1 Press **⬆** (Home).
- 2 Press **⬆** to select a device to remove.
- 3 Press **Ⓜ** **OPTIONS**.
↳ The **[Remove device]** list appears.
- 4 Press **OK**, then select **[Remove]** to remove the device.
↳ The selected device is removed from the home menu.

Change picture and sound settings

Change picture and sound settings to suit your preferences. You can apply pre-defined settings or change settings manually.

Use settings assistant

Use the settings assistant to guide you through the picture and sound settings.

- 1 Press **⬆** (Home).
↳ The home menu appears.
- 2 Press **⬆** to select **[Setup]** > **[Picture]** > **[Settings assistant]**.
- 3 Press **OK**.
↳ The **[Settings assistant]** menu appears. Follow the on-screen instructions to choose your preferred picture and sound settings.

Use smart picture

Use smart picture to apply pre-defined picture settings.

- 1 Press **PICTURE**.
↳ The **[Smart picture]** menu appears.
- 2 Press **▲▼** to select from the following smart picture settings:
 - **[Personal]**: Lists customized picture settings.
 - **[Sports]**: Applies sound settings ideally suited for sports.
 - **[Standard]**: Adjusts picture settings to suit most environments and types of video.
 - **[Movie]**: Applies settings for movie viewing.
 - **[Game]**: Applies settings for games.
 - **[Energy saving]**: Applies low-energy settings.
- 3 Press **OK** to confirm your choice.
↳ The selected smart picture setting is applied.

Manually adjust picture settings

- 1 Press **Home**.
- 2 Press **▲▼◀▶** to select **[Setup] > [Picture]**.
↳ The **[Picture]** menu appears.
- 3 Press **▲▼◀▶** to select from the following settings and adjust:
 - **[Smart picture]**: Accesses pre-defined smart picture settings.
 - **[Contrast]**: Adjusts the intensity of bright areas, keeping dark areas unchanged.
 - **[Brightness]**: Adjusts the intensity and details of dark areas.
 - **[Color]**: Adjusts color saturation.
 - **[Tint]**: Adjusts the color balance in an image.
 - **[Sharpness]**: Adjusts sharpness in the image.
 - **[Noise reduction]**: Filters and reduces noise in an image.

- **[Color temp.]**: Adjust color settings.
 - **[Cool]**: Introduces more blue tones in an image.
 - **[Warm]**: Introduces more orange tones in an image.
 - **[Normal]**: Select this for normal color settings.
 - **[Custom]**: Select this to customize personal color settings.
- **[Custom color temp.]**: Customized personal color settings.
- **[Digital Crystal Clear]**: Adjusts picture quality to optimal contrast, color and sharpness.
 - **[Advance sharpness]**: Adjusts sharpness.
 - **[Dynamic contrast]**: Enhances contrast.
 - **[Dynamic backlight]**: Adjusts brightness of the TV backlight to match lighting conditions.
 - **[MPEG artifact reduction]**: Smooths out transitions on digital pictures. You can switch this feature on or off.
 - **[Color enhancement]**: Makes colors more vivid and improves the details in bright colors.
- **[PC mode]**: Adjusts picture settings when a PC is connected to the TV.
- **[Picture format]**: Changes the picture format.
- **[Horizontal shift]**: Adjusts the picture horizontally for PC-VGA or HD input. (only available if a PC is connected to the TV.)
- **[Vertical shift]**: Adjusts the picture vertically for PC-VGA or HD input. (only available if a PC is connected to the TV.)

Change picture format

- 1 Press **Format**.
↳ A picture format bar appears.
- 2 Press **▲▼** to select a picture format.
↳ The selected picture format is activated.
- 3 Press **OK** to confirm your choice.

Summary of picture formats

The following picture settings can be configured.



Note

- Depending on the format of the picture source, some picture settings are not available.



[Auto format]: (Not for PC mode.) Enlarges the picture automatically to best fit the screen. The subtitles remain visible.



[Super zoom]: (Not for HD and PC mode.) Removes the black bars on the side of 4:3 broadcasts. There is minimal distortion.



[4:3]: Shows the classic 4:3 format.



[Movie expand 16:9]: (Not for HD and PC mode.) Scales 4:3 format to 16:9.



[Wide screen]: Scales 4:3 format to 16:9.



[Unscaled]: For HD and PC mode only, and in selected models only. Allows maximum sharpness. Some distortion may be present due to the broadcaster's systems. Set your PC resolution to wide screen mode for best results.

Use smart sound

Use smart sound to apply pre-defined sound settings.

- Press **♪ SOUND**.
↳ The **[Smart sound]** menu appears.
- Press **▲▼◀▶** to select a smart sound setting:
 - [Standard]:** Adjusts sound settings to suit most environments and types of audio.
 - [News]:** Applies settings for spoken audio, such as news.
 - [Movie]:** Applies settings for movies.
 - [Personal]:** Applies the settings that were customized in the sound menu.
- Press **OK** to confirm your choice.
↳ The selected smart sound setting is applied.

Manually adjust sound settings

- Press **⬆ (Home)**.
- Press **▲▼◀▶** to select **[Setup] > [Sound]**.
↳ The **[Sound]** menu appears.
- Press **▲▼◀▶** to select and adjust:
 - [Smart sound]:** Accesses pre-defined smart sound settings.
 - [Bass]:** Adjusts the bass level.
 - [Treble]:** Adjusts the treble level.
 - [Volume]:** Adjusts the volume.
 - [Audio language]:** Available for digital channels, when multiple languages are broadcast. Lists available audio languages.
 - [Alternate audio]:** Available for analog channels when a main and second audio program (SAP) is broadcast. Select the main or second audio program.
 - [Mono/Stereo]:** Selects mono or stereo if stereo broadcast is available.
 - [Balance]:** Adjusts the balance of the right and left speakers.

- **[TV speakers]:** Sets the TV speakers on or off, or outputs sound to an EasyLink-compliant device. Easylink must be activated in the preferences menu.
- **[Surround]:** Enables spatial sound.
- **[Auto volume leveling]:** Automatically reduces sudden volume changes, for example, during commercial break and normal broadcast. (Not applicable for sudden volume changes when switching channels.)
- **[Delta volume]:** Levels out volume differences between channels or connected devices. Switch to the connected device before you change the delta volume.

Create and use list of favorite channels

You can create a list of your preferred TV channels so that you can find those channels easily.

Select a favorite list

- 1 When watching TV, press **OK** to display the channel grid.
- 2 Press **⏏** **OPTIONS**.
↳ The channel options menu appears.
- 3 Press **▲▼** to select **[Select list]**, then press **OK** to enter.
↳ The channel list options appear.
- 4 Select **[Favorite]**, then press **OK**.
↳ Only channels in the favorite list appear in the channel grid.

Note

- The favorite channel grid is empty until you add channels into the favorite lists.

Add a channel to a favorite list

- 1 When watching TV, press **OK**.
↳ The channel grid appears.
- 2 Press **▲▼◀▶** to select a channel to add to a favorite list.
- 3 Press **⏏** **OPTIONS**.
↳ The channel options menu appears.
- 4 Select **[Mark as favorite]**, then press **OK**.
↳ The channel is added to the favorite list.

Note

- All favorite channels are marked by a star in the channel grid.

Remove a channel from a favorite list

- 1 When watching TV, press **OK**.
↳ The channel grid appears.
- 2 Press **▲▼◀▶** to select a channel to remove.
- 3 Press **⏏** **OPTIONS**.
- 4 Select **[Unmark as fav.]**, then press **OK**.
↳ The channel is removed.

Use the Electronic Program Guide

EPG is an on-screen guide available for digital channels. EPG allows you to:

- View a list of digital programs being broadcast
- View upcoming programs
- Group programs by genre
- Set reminders when programs start
- Set up preferred EPG channels

Switch on EPG

- 1 When watching TV, press **GUIDE**.
↳ The EPG planner screen appears displaying information about the scheduled programs.



Note

- EPG data is available only in selected countries and can take some time to load.

Use EPG

- 1 When watching TV, press **GUIDE**.
↳ The EPG planner screen appears.
- 2 Press **Home**.
↳ The program guide menu appears.
- 3 Press **Left/Right** to select an option, and then press **OK** to confirm it.
- 4 Press **Home** to exit the EPG menu.



Note

- Only the channels marked with [x] in the **[Pref. EPG channel]** list, appear in the EPG menu.

Use the EPG options menu

Use the EPG options menu to set or clear reminders, change day and access other useful EPG options.

- 1 Press **GUIDE**.
- 2 Press **OPTIONS**.
↳ The EPG menu appears.
- 3 Press **Up/Down** to select one of the following options.
 - **[Search by genre]**: Searches TV programs by genre.
 - **[Schedule reminders]**: Lists program reminders. Only available for upcoming programs.
 - **[Pref. EPG channel]**: Sets preferred EPG channels.
- 4 Press **OK** to enter or activate the option.
- 5 Press **BACK** to exit the EPG menu.



Tip

- Press **GUIDE** to switch between EPG and channel grid.

Use the TV clock

You can display a clock on the TV screen. The clock displays the current time using time data received from your TV service operator.

Change the clock mode

- 1 Press **Home**.
- 2 Press **Left/Right** to select **[Setup] > [Installation] > [Clock] > [Auto clock]**.
- 3 Press **OK** to enter the **[Auto clock]** menu.
- 4 Press **Up/Down** to select **[Automatic]** or **[Manual]**.
- 5 Press **OK** to confirm.

Change the time zone

- 1 Press **⬆** (Home).
- 2 Press **▲▼◀▶** to select **[Setup]** > **[Installation]** > **[Clock]** > **[Time zone]**.
- 3 Press **▲▼** to select your time zone.
- 4 Press **OK** to confirm.

Note

- This option is only available if you select **[Auto clock]** > **[Automatic]** (In countries with clock transmission data).

Set the time

- 1 Press **⬆** (Home).
- 2 Press **▲▼◀▶** to select **[Setup]** > **[Installation]** > **[Clock]** > **[Time]**.
- 3 Press **▲▼◀▶** and **OK** to enter the date.
- 4 Select **[Done]**, then press **OK** to confirm.

Display the TV clock

- 1 When watching TV, press **⏻** **OPTIONS**.
↳ The TV option menu appears.
- 2 Select **[Clock]**.
- 3 Press **OK**.

Note

- To disable the clock, repeat the above procedure.

Tip

- you can also press **CLOCK** on the remote control to display the TV clock.

Use timers

You can set timers to switch the TV to standby at a specified time.

Tip

- Set the TV clock before you use timers.

Automatically switch the TV to standby (sleep timer)

Sleep timer switches the TV to standby after a pre-defined period of time.

Tip

- You can switch off your TV earlier or reset the sleep timer during the countdown.

- 1 Press **⬆** (Home).
- 2 Press **▲▼◀▶** to select **[Setup]** > **[Features]** > **[Sleep timer]**.
↳ The **[Sleep timer]** menu appears.
- 3 Press **◀▶** to set the sleep time.
↳ The sleep timer can be up to 180 minutes in steps of five minutes. If set to zero, the sleep timer is switched off.
- 4 Press **OK** to switch on the sleep timer.
↳ The TV switches to standby after the specified time.

Use TV locks

You can prevent your children from watching certain programs or channels by locking the TV controls.

Set or change your PIN code

- 1 Press **⬆** (Home).
- 2 Press **▲▼◀▶** to select **[Setup]** > **[Features]** > **[Set code]** / **[Change code]**.
↳ The **[Set code]** / **[Change code]** menu appears.
- 3 Enter your code using the **Numeric buttons**.
↳ Follow the on-screen instructions to create or change your PIN code.



Tip

- If you forget your code, enter '8888' to override any existing codes.

Lock or unlock the TV

Lock the TV to prevent access to all channels and connected devices.

- 1 Press **⬆** (Home).
- 2 Press **▲▼◀▶** to select **[Setup]** > **[Features]** > **[TV lock]**.
↳ You are prompted to enter your PIN code.
- 3 Enter your code using **Numeric buttons**.
↳ The **[TV lock]** menu appears.
- 4 Press **▲▼** to select **[Lock]** or **[Unlock]**.
- 5 Press **OK** to confirm.
↳ All channels and connected devices are locked or unlocked.
- 6 Press **⬆** (Home) to exit.



Note

- If you select **[Lock]**, you have to enter your code every time you turn on your TV.

Use age ratings lock

- 1 Press **⬆** (Home).
- 2 Press **▲▼◀▶** to select **[Installation]** > **[Child lock]** > **[Age ratings lock]**.
- 3 Press **▶**.
- 4 Key in your PIN code.
- 5 Select an age group from the list.

Use content ratings lock

- 1 Press **⬆** (Home).
- 2 Press **▲▼◀▶** to select **[Installation]** > **[Child lock]** > **[Content ratings lock]**.
- 3 Press **▶**.
- 4 Enter your PIN code.
- 5 Select a content classification from the list.

Lock or unlock one or more channels

- 1 When watching TV, press **OK** to display the channel grid.
- 2 Press **▲▼◀▶** to select a channel to lock or unlock.
- 3 Press **☰** **OPTIONS**.
- 4 Press **▲▼** to select **[Lock channel]** or **[Unlock channel]**.
- 5 For each selection, press **OK** to lock or unlock the channel.
↳ The first time you lock or unlock a channel, you are prompted to enter your PIN code.
- 6 Enter your code and press **OK**.
↳ If the channel is locked, a lock icon displayed.
- 7 Repeat the process to lock or unlock more channels.

Note

- Switch the TV off and on again for the change to take effect.
- If you use **P +/-** on your remote control to switch between channels, the locked channels are skipped.
- If you access the locked channels from the channel grid, you are prompted to enter your PIN code.

Display closed captions

The caption service displays transmitted CC text. The caption text can be displayed permanently or only when the TV is muted.

Note

- Not all TV programs and commercials include closed caption information.
- Refer to the TV program listings in your area for the TV channels and closed caption information. The captioned programs are usually noted in the TV listings with service marks such as 'CC'.

- 1 When watching TV, press **☰** **OPTIONS**
- 2 Press **▲▼** to select **[Caption service]**, then press **OK**.
↳ This displays the different types of closed caption text.
- 3 Press **▲▼◀▶** to select the correct closed caption, then press **OK**.
- 4 Press **CC**.
- 5 Press **▲▼** to enable or disable closed caption.
- 6 Press **OK** to confirm.

View photos and play music from a USB storage device

Caution

- Philips is not responsible if the USB storage device is not supported, nor is it responsible for damage or loss of data from the device.

Use the USB connector to view photos or listen to music stored on a USB storage device.

Note

- Only FAT or DOS-formatted USB storage devices are supported. File names must not exceed 128 characters.
- Your TV only supports USB flash drives in FAT/FAT32 format. It does not support other devices that can be connected to the USB port including but not limited to the following: portable storage devices such as external hard drives and mini hard drives, MP3 player, digital camera, phone, portable video player, portable multimedia player.

Connect a USB storage device and enter the content browser

- 1 Turn on the TV.
- 2 Connect the USB storage device to the TV.
- 3 Press **⬆** (**Home**).
↳ The home menu appears.
- 4 Press **▲▼◀▶** to select **[Browse USB]**.
- 5 Press **OK** to confirm.
↳ The USB content browser appears.

Note

- If you connect multiple USB storage devices through a USB hub, a message appears prompting you to select a device. Press **▲▼** to select the device, then press **OK** to confirm.

Tip

- Press **☰** **GUIDE** to switch between thumbnail and file browsing views.

View photos

- 1 In the USB browser, press **▶** to enter the **[Picture]** folder.
- 2 Press **▲▼◀▶** to select a photo or a photo album.
- 3 Press **OK** to view a full screen image of the photo.



Tip

- When in full screen mode, press **◀▶** to move between photos.

View a slide show of your photos

- 1 When a full screen image of a photo is displayed, press **OK**.
 - ↳ A slide show begins from the selected photo.
- 2 Press the following buttons to control the slide show:
 - **OK** to pause the slide show.
 - **◀▶** to go back or move forward to the next image.
 - **↶ BACK** to stop the slide show.

Change slide show settings

- 1 When viewing a slide show, press **☰ OPTIONS**.
 - ↳ The slide show options menu appears.
- 2 Press **▲▼** to select one of the following.
 - **[Rotate image]**: Rotates a picture.
 - **[Start slideshow] / [Stop slideshow]**: Starts or stops a slide show.
 - **[Slideshow trans.]**: Sets the transition from one picture to the next.
 - **[Slideshow speed]**: Sets the amount of time that a picture is shown.
 - **[Show info]**: Displays the picture name, date, size and next picture in the slide show.
- 3 Press **OK** to confirm your setting.



Note

- **[Rotate image]** and **[Show info]** appear only when you press **OK** to pause the slideshow.

Listen to music

- 1 In USB browser view, select **[MUSIC]** and press **▶** to enter.
- 2 Press **▲▼◀▶** to select a music track or album.
- 3 Press **OK** to play the selected music.

Button	Function
OK	Pause, resume play or stop playback.
◀/▶	Go to the previous or next music.

Music settings

When listening music, press **☰ OPTIONS** to access one of the following music settings.

- **[Start playback] / [Stop playback]**: Starts or stops the music.
- **[Repeat] / [Play once]**: Repeats a song. / Disables repeat play and plays a song or album once.
- **[Shuffle on] / [Shuffle off]**: Enables or disables random play of songs.
- **[Show info]**: Displays the file name.
- **[TV speakers]**: Sets the TV speakers on or off.
- **[Sound]**: Adjusts the sound setting.

Disconnect a USB storage device



Caution

- Follow this procedure to avoid damage to your USB storage device.

- 1 Press **↶ BACK** to exit the USB browser.
- 2 Wait for five seconds then disconnect the USB storage device.

Update the TV software

Philips continuously tries to improve its products and we recommend that you update the TV software when updates are available. Check www.philips.com/support for availability.

Check the current software version

- 1 Press **⬆** (Home).
- 2 Select **[Setup]** > **[Software update]** > **[Current software]**.
↳ The TV displays the current software information.

Step 1 Download the TV identification file

- 1 Press **⬆** (Home)
- 2 Select **[Setup]** > **[Software update]** > **[Update assistant]** > **[Action]**.
- 3 Select **[Start]**.
- 4 Follow the on-screen instructions to download the TV identification file to the USB storage device.

Step 2 Download the latest software

- 1 Connect the USB storage device to a computer with internet connection.
- 2 Locate and open the file **update.htm** on your USB storage device.
- 3 Read the on-screen instructions and click the **Send ID** button.
If a new software is available, the update is downloaded to the USB storage device.
- 4 Disconnect the USB storage device.

Step 3 Automatically update TV software



Caution

- Do not disconnect the USB storage device from the TV during the software update.
- If a power failure occurs during the update, do not remove the USB storage device from the TV. The TV will continue the update as soon as power comes back.

- 1 Connect the USB storage device to the TV.
↳ An on-screen message prompts you to update your TV software.
- 2 Select **[Update]**.
- 3 Select **[Start]**.
- 4 Follow the on-screen instructions to update the TV software.
- 5 Once complete, press **OK** to restart the TV.

Manually update TV software

- 1 If the software update screen does not appear automatically, select **[Setup]** > **[Software update]** > **[Local updates]** > **[USB]**.
- 2 Press **OK** to update the TV software manually.
- 3 Follow the on-screen instructions to complete the update.
- 4 Once complete, press **OK** to restart the TV.

Change TV preferences

Use the preferences menu to customize your TV settings.

- 1 Press **⬆** (Home).
- 2 Select **[Setup] > [Installation] > [Preferences]**.
 - **[Location]**: Optimizes TV settings for your location - home or shop.
 - **[Volume bar]**: Displays the volume bar when you adjust the volume.
 - **[Channel info.]**: Displays information about the TV channel every time you switch channels.
 - **[EasyLink]**: Enables one-touch play and one-touch standby between EasyLink-compliant devices.
 - **[Pixel Plus Link]**: Overrides the settings of connected devices and uses the settings of the TV.
 - **[E-sticker]**: For shop mode only. Sets the location of the e-sticker.
- 3 Press **▲▼◀▶** to select your preference.
- 4 Press **OK**.
- 5 Press **⬆** (Home) to exit.

Start a TV demo

You can use demonstrations to better understand the features of your TV. Some demos are not available on certain models. Available demos are displayed in the menu list.

- 1 Press **⬆** (Home).
- 2 Select **[Features] > [Demo]**.
↳ The **[Demo]** menu appears.
- 3 Press the **▲▼** to select a demo.
 - **[Digital Crystal Clear]**: Adjusts picture quality to optimal contrast, color and sharpness.
 - **[Active Control]**: Automatically adjusts the picture setting for optimal picture quality continuously under any signal conditions.
- 4 Press **OK** to start the demo.
- 5 Press **⬆** (Home) to exit demo mode.

Reset the TV to factory settings

You can restore the default picture and sound settings of your TV. The channel installation settings remain the same.

- 1 Press **⬆** (Home).
- 2 Select **[Setup] > [Installation] > [Factory reset]**.
- 3 Select **[Start]**, then press **OK**.
- 4 Press **⬆** (Home) to exit.

6 Install channels

The first time you setup your TV, you are prompted to select a menu language and to install TV and digital radio channels (if available). This chapter provides instructions on how to re-install and fine tune channels.

Automatically install channels

This section describes how to search and store channels automatically.

- 1 Press **⬆** (Home).
- 2 Select **[Installation] > [Channel install.] > [Automatic installation]**.
- 3 Select **[Start]**, then press **OK**.
- 4 Follow the on-screen instructions to install channels.

Select installation mode

- 1 Press **⬆** (Home).
- 2 Select **[Installation] > [Channel install.] > [Installation mode]**.
- 3 Press **▲▼** to make your selection.
- 4 Press **OK** to confirm.



Tip

- You can press the **Numeric buttons** to search for a channel. If the channel is available, the TV automatically tune and save it in the channel list.

Test digital reception

You can check the quality and signal strength of digital channels. This allows you to reposition and test your antenna.

- 1 Press **⬆** (Home).
- 2 Press **▲▼◀▶** to select **[Setup] > [Installation] > [Channel install.] > [Digital: test reception]**.
- 3 Press **▶** to enter the menu.
- 4 Press **▲▼◀▶** or the **Numeric buttons** to enter the channel number.
- 5 Press **OK** to confirm the channel number.
- 6 Press **OK** again to confirm **[Search]**.
- 7 When complete, select **[Store]** to store the channel.



Note

- If the signal quality and strength is poor, reposition the antenna and retest.
- If you still have problems with the reception of your digital broadcast, contact a specialized installer.

Rename channels

You can rename channels. The name appears when you select the channel.

- 1 When watching TV, press **OK** to display the channel grid.
- 2 Select the channel to rename.
- 3 Press **☰** **OPTIONS**.
↳ The channel options menu appears.
- 4 Press **▲▼** to select **[Rename channel]**, then press **OK**.
↳ A text input box appears.
- 5 Press **▲▼◀▶** to select characters.
- 6 Press **OK** to confirm each characters.
- 7 Select **[Done]**, then press **OK** to finish renaming channels.



Tip

- The device name can be up to six characters long.
- Press **[Aa]** to change uppercase letter to lowercase letter and vice versa.

7 Connect devices

This section describes how to connect various devices with different connectors and supplements examples provided in the Quick Start.

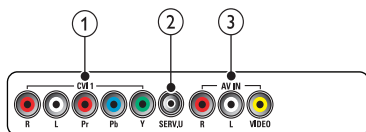
! Caution

- Disconnect the mains cord before connecting devices.

≡ Note

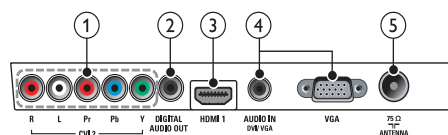
- Different types of connectors may be used to connect a device to your TV, depending on availability and your needs.

Back connector



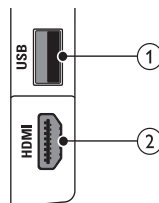
- CVI 1 (Y Pb Pr and AUDIO L/R)**
Analog audio and video input from analog or digital devices such as DVD players or game consoles.
- SERV. U**
For use by service personnel only.
- AV IN (VIDEO and AUDIO L/R)**
Analog audio and video input from analog or digital devices such as DVD players, satellite receivers and VCRs.

Bottom connector



- CVI 2 (Y Pb Pr and AUDIO L/R)**
Analog audio and video input from analog or digital devices such as DVD players or game consoles.
- DIGITAL AUDIO OUT**
Digital audio output to home theaters and other digital audio systems.
- HDMI 1**
Digital audio and video input from high-definition digital devices such as Blu-ray players.
- PC IN (VGA and AUDIO IN DVI/VGA)**
Audio and video input from a computer.
- ANTENNA**
Signal input from an antenna or cable.

Side connector



- USB**
Data input from USB storage devices.
- HDMI**
Digital audio and video input from high-definition digital devices such as Blu-ray players.

Connect a computer

Before you connect a computer to the TV

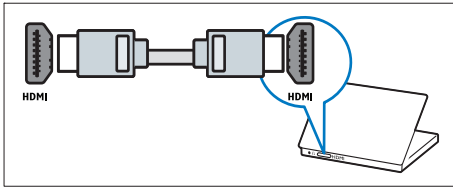
- Set the screen refresh rate on your computer to 60Hz.
- Select a supported screen resolution on your computer.

Connect a computer with one of the following connectors:

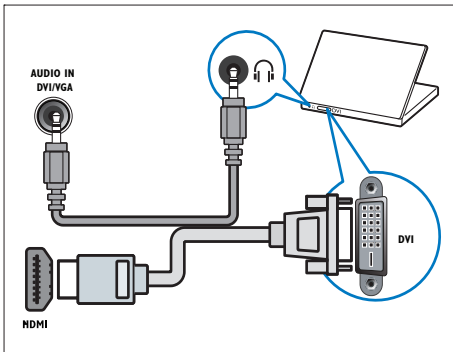
Note

- Connections via DVI or VGA require an additional audio cable.

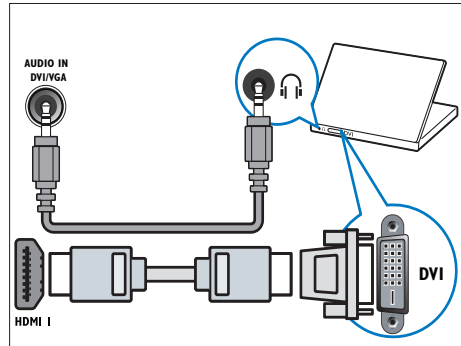
• HDMI cable



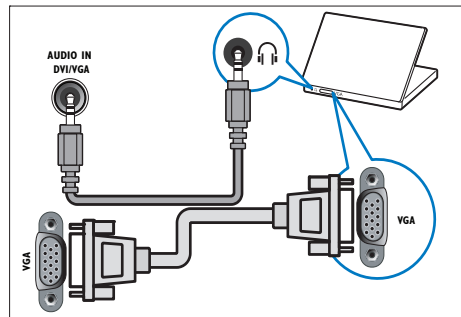
• DVI-HDMI cable



• HDMI cable and HDMI-DVI adaptor



• VGA cable



Use Philips EasyLink

Your TV supports Philips EasyLink, which uses the HDMI CEC (Consumer Electronics Control) protocol. EasyLink-compliant devices that are connected through HDMI connectors can be controlled by a single remote control.



Note

- The EasyLink-compliant device must be switched on and selected as the source.
- Philips does not guarantee 100% interoperability with all HDMI CEC devices.

EasyLink features

One-touch play

When you connect your TV to devices that support one-touch play, you can control your TV and the devices with one remote control.

One-touch standby

When you connect your TV to devices that support standby, you can use your TV remote control to put your TV and all connected HDMI devices in standby mode.

System audio control

When you connect your TV to HDMI CEC compliant devices, your TV can switch automatically to play audio from the connected device.

To use one-touch audio, you must map the audio input from the connected device to your TV.

You can use the remote control from the connected device to adjust the volume.

Remote control (RC) key forwarding

RC key forwarding allows you to control EasyLink-compliant devices using your TV remote control.

Enable or disable EasyLink



Note

- Do not enable Philips EasyLink if you do not intend to use it.

- 1 Press **⬆** (Home).
- 2 Press **⬆** to select **[Setup]** > **[Installation]** > **[Preferences]** > **[EasyLink]**.
- 3 Select **[On]** or **[Off]**.

Use one-touch play

- 1 After enabling EasyLink, press play on your device.
 - ↳ The TV automatically switches to the correct source.

Use one-touch standby

- 1 Press and hold **⏻** (Standby-On) for three seconds on the TV's or device's remote control.
 - ↳ The TV and all connected HDMI devices switch to standby.

Set TV speakers to EasyLink mode

When you play content from an EasyLink compliant home theater, the TV speakers are automatically muted.

- 1 Press **⬆** (Home).
- 2 Press **⬆** to select **[Setup]** > **[Sound]** > **[TV speakers]** > **[Auto EasyLink]**.
 - ↳ The TV speakers are turned off automatically when content from an Easylink compliant system is detected.
- 3 Select **[Setup]** > **[Sound]** > **[TV speakers]** > **[On]** to disable system audio control and enable the TV speakers.

Enable or disable remote control key forwarding

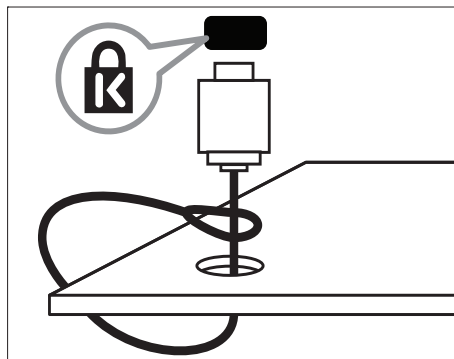
- 1 Press **⬆** (Home).
- 2 Press **⬆** to select a device with HDMI connector.
- 3 Press **⌂** **OPTIONS**.
- 4 Press **⬆** to select **[Enable RC pass-through]** or **[Disable RC pass-through]**.
- 5 Press **OK** to confirm.

Access RC pass-through menu

- 1 Press **⬆** to select a RC pass-through enabled device and press **OK** to enter.
- 2 Press **⌂** **OPTIONS** to access one of the following menus for TV or the active device connected to the TV:
 - **[TV setup]**: Access the TV setup menu.
 - **[TV speakers]**: Turns TV speakers on or off. Setting TV speakers to automatic mode turns off the speakers when content from an EasyLink-compliant home theater system is detected.
 - **[Clock]**: Displays the clock on the TV screen.
 - **[Dev. root menu]**: Accesses the root menu of the CD/DVD/game disc.
 - **[Device setup menu]**: Accesses the main menu of the connected device such as DVD player, HDD recorder, or game console.
 - **[Dev. content menu]**: Accesses the content menu of the CD/DVD/game disc.
- 3 Press **OK** to confirm.

Use a Kensington lock

There is a Kensington security slot at the back of the TV. Prevent theft by looping a Kensington lock between the slot and a permanent object, such as a heavy table.



8 Product information

Product information is subject to change without notice. For detailed product information, go to www.philips.com/support.

Supported display resolutions

Computer formats (HDMI)

- Resolution - refresh rate:
 - 640 × 480 - 60Hz
 - 800 × 600 - 60Hz
 - 1024 × 768 - 60Hz
 - 1280 × 1024 - 60Hz
 - 1360 × 768 - 60Hz
 - 1920 × 1080 - 60Hz

Computer formats (VGA)

- Resolution - refresh rate:
 - 640 × 480 - 60Hz
 - 800 × 600 - 60Hz
 - 1024 × 768 - 60Hz
 - 1280 × 1024 - 60Hz
 - 1360 × 768 - 60Hz

Video formats

- Resolution - refresh rate:
 - 480i - 60Hz
 - 480p - 60Hz
 - 576i - 50Hz
 - 576p - 50Hz
 - 720p - 50Hz, 60Hz
 - 1080i - 50Hz, 60Hz
 - 1080p - 24Hz, 25Hz, 30Hz, 50Hz, 60Hz

Multimedia

- Supported storage device: USB (Only FAT 16 or FAT 32 USB storage devices are supported)
- Supported multimedia file formats:
 - Images: JPEG
 - Audio: MP3



Note

- Multimedia file names must not exceed 128 characters.

Tuner/Reception/Transmission

- Antenna input: 75ohm coaxial (F type)
- TV system: PAL M, PAL N, NTSC M, SBTVD-T
- Video playback: NTSC, PAL

Remote control

- Batteries: 2 × AAA (R03 type)

Power

- Mains power: AC 110-240 V (50-60 Hz)
- Standby power: < 0.15 W
- Ambient temperature: 5 to 35 degrees Celsius

Supported TV mounts

To mount the TV, purchase a Philips TV mount or a VESA-compatible TV mount. To prevent damage to cables and connectors, be sure to leave a clearance of at least 2.2 inches or 5.5cm from the back of the TV.



Warning

- Follow all instructions provided with the TV mount. Koninklijke Philips Electronics N.V. bears no responsibility for improper TV mounting that results in accident, injury or damage.

TV screen size (inches)	Required pitch (mm)	Required mounting bolts
32	200 × 100	4 × M6
40	300 × 200	4 × M6

Product specification

Design and specifications are subject to change without notice.

32PFL3605D

- Without TV stand
 - Dimension (WxHxD): 795 × 508 × 83 (mm)
 - Weight: 8.7 kg
- With TV stand
 - Dimension (WxHxD): 795 × 557 × 221 (mm)
 - Weight: 10 kg

40PFL3605D

- Without TV stand
 - Dimension (WxHxD): 986.2 × 616.5 × 83(mm)
 - Weight: 12 kg
- With TV stand
 - Dimension (WxHxD): 986.2 × 666.5 × 236.4 (mm)
 - Weight: 14 kg

9 Troubleshooting

This section describes commonly encountered issues and accompanying solutions.

General TV issues

The TV does not switch on:

- Disconnect the power cable from the power outlet. Wait for one minute then reconnect it.
- Check that the power cable is securely connected.

The remote control is not working properly:

- Check that the remote control batteries are correctly inserted according to the +/- orientation.
- Replace the remote control batteries if they are flat or weak.
- Clean the remote control and TV sensor lens.

The standby light on the TV blinks red:

- Disconnect the power cable from the power outlet. Wait until the TV cools down before reconnecting the power cable. If the blinking reoccurs, contact Philips Consumer Care.

You forgot the code to unlock the TV lock feature

- Enter '8888'.

The TV menu is in the wrong language.

- Change the TV menu to your preferred language.

When turning the TV on/off/to standby, you hear a creaking sound from the TV chassis:

- No action is required. The creaking sound is normal expansion and contraction of the TV as it cools and warms up. This does not impact performance.

Cannot remove 'e-sticker' banner displayed on the TV.

- To remove the logos and images, set the location of your TV to home.
 1. Press **⬆** (Home).
 2. Select **[Setup] > [Installation] > [Preferences] > [Location]**.
 3. Select **[Home]** and press **OK**.

TV channel issues

Previously installed channels do not appear in the channel list:

- Check that the correct channel list is selected.

No digital channels were found during the installation:

- Check the TV signal and cable connection.

Picture issues

The TV is on, but there is no picture:

- Check that the antenna is properly connected to the TV.
- Check that the correct device is selected as the TV source.

There is sound but no picture:

- Check that the picture settings are correctly set.

There is poor TV reception from an antenna connection:

- Check that the antenna is properly connected to the TV.
- Loud speakers, unearthed audio devices, neon lights, high buildings and other large objects can influence reception quality. If possible, try to improve the reception quality by changing the antenna direction or moving devices away from the TV.
- If reception on only one channel is poor, fine tune this channel.

There is poor picture quality from connected devices:

- Check that the devices are connected properly.
- Check that the picture settings are correctly set.

The TV did not save your picture settings:

- Check that the TV location is set to the home setting. This mode offers you the flexibility to change and save settings.

The picture does not fit the screen; it is too big or too small:

- Try using a different picture format.

The picture position is incorrect:

- Picture signals from some devices may not fit the screen correctly. Check the signal output of the device.

Sound issues

There is picture but no sound from the TV:



Note

- If no audio signal is detected, the TV automatically switches the audio output off — this does not indicate malfunction.

- Check that all cables are properly connected.
- Check that the volume is not set to 0.
- Check that the sound is not muted.

There is picture but sound quality is poor:

- Check that the sound settings are correctly set.

There is picture but sound comes from one speaker only:

- Verify that sound balance is set to the center.

HDMI connection issues

There are problems with HDMI devices:

- Note that HDCP (High-bandwidth Digital Content Protection) support can delay the time taken for a TV to display content from a HDMI device.
- If the TV does not recognize the HDMI device and no picture is displayed, try switching the source from one device to another and back again.
- If there are intermittent sound disruptions, check that output settings from the HDMI device are correct.
- If you use an HDMI-to-DVI adapter or HDMI to DVI cable, check that an additional audio cable is connected to **AUDIO IN** (mini-jack only).

Computer connection issues

The computer display on the TV is not stable:

- Check that your PC uses the supported resolution and refresh rate.
- Set the TV picture format to unscaled.

Contact us

If you cannot resolve your problem, refer to the FAQs for this TV at www.philips.com/support.

If the problem remains unresolved, contact Philips Consumer Care in your country as listed in this user manual.



Warning

- Do not attempt to repair the TV yourself. This may cause severe injury, irreparable damage to your TV or void your warranty.



Note

- Make a note of your TV model and serial number before you contact Philips. These numbers are printed on the back of the TV and on the packaging.

10 Index

A

age ratings 15

B

batteries 25, 4

bracket for wall mount 26

C

care 4

channel grid 7

channels

favorites list 12

grid 7

install

automatic 20

list 12

lock 15

rename 20

switch 7

troubleshooting 27

child lock

lock channels 15

lock connected devices 15

PIN code 15

clock

display 14

closed captions 16

computer

connect 28, 22

display resolution 25

connect

PC 28, 22

connectors

HDMI 28, 21

overview 21

USB 16

content ratings 15

D

default settings 19

demo 19

devices 8

devices

add to home menu 9

remove 9

watch 8

digital channel

test reception 20

digital services

disconnect USB 17

display

resolution 25

dispose 4

E

EasyLink

disable 23

enable 23

one-touch play 23

one-touch standby 23

system audio control 23

end of life 4

environmental care 4

e-sticker 19

F

factory settings 19

favorites list

create list 12

view list 12

H

HDMI 28, 21

home mode 19

I

install channels

automatic 20

K	
Kensington lock	24

L	
language	
troubleshoot	27
list	
favorites list	12
location	
home or shop	19
lock	
Kensington lock	24
lock channels	15
lock connected devices	15
PIN code	15

M	
menu	
main menu	9
MPEG artifact reduction	10
multimedia	25
music	
USB	17
mute TV speakers	23

O	
one-touch play	23
one-touch standby	23

P	
PC	
connect	22, 28
resolution	25
picture format	
change	10
troubleshooting	27
picture settings	9
PIN code	15
pixel plus link	19
power	25
power consumption	25
preferences	19
product specifications	25

R	
reception	27
recycle	4
register product	5
remote control	
batteries	25, 4
overview	5
RC pass-through	24
technical specifications	25
rename channels	20
resolution	25
restore default	19

S	
safety	3
screen care	4
settings	
picture	9, 10
sound	11, 9
settings assistant	9
shop mode	19
slideshow	
view	17
smart picture	10
smart settings	10, 11
smart sound	11
software	
version	18
sound settings	11
specifications	25
standby	7
switch	
channels	7
on and off	7
source	8

T	
technical specifications	25
timer	
on timer	14
sleep timer	14
standby	14
transmission	25, 27
transporting	3
troubleshooting	27

TV lock	
lock channels	15
lock connected devices	15
PIN code	15
TV overview	5

U

USB

disconnect USB	17
listen to music	17
view photos	17

V

video format

technical specifications	25
--------------------------	----

volume

adjust	8
automatic leveling	11
delta	11
mute	8, 23

W

wall mount	3, 26
-------------------	-------

Lista de Serviços Autorizados

ACRE		PARÁ		SÃO PAULO	
RIO BRANCO	68-32217642	BELEM	91-32690400	AMERICANA	19-34062914
ALAGOAS		ITAITUBA	93-35181545	ATIBAIA	11-44118145
MACEIO	82-32417237	PARAÍBA		AVARE	14-37322142
AMAPÁ		CAMPINA GRANDE	83-33212128	BARRETOS	17-33222742
MACAPA	96-32175934	JOAO PESSOA	83-32469689	BAURU	14-32239551
AMAZONAS		PARANÁ		BIRIGUI	18-36424011
MANAUS	92-36633366	CASCADEL	45-32254005	BOTUCATU	14-38821081
MANAUS	92-36333035	CURITIBA	41-32648791	CAMPINAS	19-32369199
BAHIA		LONDRINA	43-33241002	CAMPINAS	19-37372500
FEIRA DE SANTANA	75-32232882	MARINGA	44-32264620	GUARULHOS	11-64431153
ILHEUS	73-2315995	PARANAGUA	41-34225804	JALES	17-36324479
IRECE	74-36410202	PONTA GROSSA	42-32226590	JAU	14-36222117
JEQUIE	73-35254141	PERNAMBUCO		OURINHOS	14-33225457
JUAZEIRO	74-36116456	CAMARAGIBE	81-34581246	PRES PRUDENTE	18-32225168
SALVADOR	71-32072070	GARANHUNS	87-37610085	RIBEIRAO PRETO	16-36106989
STO ANTONIO		RECIFE	81-34629090	S JOSE RIO PRETO	17-32325680
JESUS	75-36314470	PIAUI		SANTOS	13-32272947
TEIXEIRA DE FREITAS	73-30111600	TERESINA	86-32230825	SAO PAULO	11-22966122
CEARÁ		TERESINA	86-32213535	SAO PAULO	11-38457575
FORTALEZA	85-32875506	RIO DE JANEIRO		SOROCABA	15-32241170
FORTALEZA	85-40088555	CABO FRIO	22-26451819	TAUBATE	12-36219080
DISTRITO FEDERAL		ITAPERUNA	22-38236825	TUPA	14-34962596
BRASILIA	61-3445 1991	MACAE	22-27591358	SENGIPE	
BRASILIA	61-33233487	NITEROI	21-26220157	ARACAJU	79-32119764
TAGUATINGA	61-33549615	PETROPOLIS	24-22312737	TOCANTINS	
ESPIRITO SANTO		RESENDE	24-33550101	PALMAS	63-32144502
ALEGRE	28-35526349	RIO DE JANEIRO	21-25096851		
VITORIA	27-32233899	RIO DE JANEIRO	21-24315759		
GOIAS		RIO GRANDE DO NORTE			
GOIANIA	62-32292908	MOSSORO	84-33147809		
MARANHÃO		NATAL	84-32132345		
SAO LUIS	98-32323236	RIO GRANDE DO SUL			
MATO GROSSO		CANELA	54-32821551		
CUIABA	65-33176464	FARROUPILHA	54-32683603		
JACIARA	66-34612138	IJUI	55-33327766		
RONDONOPOLIS	66-34233888	NOVO HAMBURGO	51-35823191		
MATO GROSSO DO SUL		PASSO FUNDO	54-33111104		
CAMPO GRANDE	67-33831540	PELOTAS	53-32223633		
MINAS GERAIS		PORTO ALEGRE	51-33256653		
ARAXA	34-36611132	PORTO ALEGRE	51-32268834		
ARAXA	34-36691869	SANTA MARIA	55-32222235		
BELO HORIZONTE	31-32254066	STA CRUZ DO SUL	51-37153048		
BELO HORIZONTE	31-32957700	RONDÔNIA			
CONTAGEM	31-33912994	ARIQUEMES	69-35353491		
GOV VALADARES	33-32716650	PORTO VELHO	69-32273377		
ITUUBATA	34-32682131	RORAIMA			
JUIZ DE FORA	32-32151514	BOA VISTA	95-32249605		
MONTES CLAROS	38-32218925	SANTA CATARINA			
MURIAE	32-37224334	BLUMENAU	47-33227742		
POUSO ALEGRE	35-34212120	CRICIUMA	48-34375155		
SAO JOAO DEL REI	32-33718306	FLORIANOPOLIS	48-32254149		
SETE LAGOAS	31-37718570	JARAGUA DO SUL	47-33722050		
UBERABA	34-33332520	JOACABA	49-35220418		
UBERLANDIA	34-32123636	LAGES	49-32244414		
		RIO DO SUL	47-35211920		

CERTIFICADO DE GARANTIA INTERNACIONAL

ESTE APARELHO É GARANTIDO PELA PHILIPS DA AMAZÔNIA INDÚSTRIA ELETRÔNICA LTDA., POR UM PERÍODO SUPERIOR AO ESTABELECIDO POR LEI. PORÉM, PARA QUE A GARANTIA TENHA VALIDADE, É IMPRESCINDÍVEL QUE, ALÉM DESTES CERTIFICADO, SEJA APRESENTADA A NOTA FISCAL DE COMPRA DO PRODUTO.

- 1) A PHILIPS DA AMAZÔNIA INDÚSTRIA ELETRÔNICA LTDA. ASSEGURA AO PROPRIETÁRIO CONSUMIDOR DESTES APARELHO A GARANTIA DE 365 DIAS (90 DIAS LEGAL MAIS 275 ADICIONAL) CONTADOS A PARTIR **DA DATA DE ENTREGA DO PRODUTO, CONFORME EXPRESSO NA NOTA FISCAL DE COMPRA**, QUE PASSA A FAZER PARTE DESTES CERTIFICADO.
- 2) ESSA GARANTIA PERDERÁ SUA VALIDADE SE:
 - A) O DEFEITO APRESENTADO FOR OCASIONADO POR USO INDEVIDO OU EM DESACORDO COM O SEU MANUAL DE INSTRUÇÕES.
 - B) O PRODUTO FOR ALTERADO, VIOLADO OU CONSERTADO POR PESSOA NÃO AUTORIZADA PELA PHILIPS.
 - C) O PRODUTO FOR LIGADO A FONTE DE ENERGIA (REDE ELÉTRICA, PILHAS, BATERIA, ETC.) DE CARACTERÍSTICAS DIFERENTES DAS RECOMENDADAS NO MANUAL DE INSTRUÇÕES E/OU NO PRODUTO.
 - D) O NÚMERO DE SÉRIE QUE IDENTIFICA O PRODUTO ESTIVER DE ALGUMA FORMA ADULTERADO OU RASURADO.
- 3) ESTÃO EXCLUÍDOS DESTA GARANTIA DEFEITOS DECORRENTES DO DESCUMPRIMENTO DO MANUAL DE INSTRUÇÕES DO PRODUTO, DE CASOS FORTUITOS OU DE FORÇA MAIOR, BEM COMO AQUELES CAUSADOS POR AGENTES DA NATUREZA E ACIDENTES.
- 4) EXCLUEM-SE IGUALMENTE DESTA GARANTIA OS DEFEITOS DECORRENTES DO USO DOS PRODUTOS EM SERVIÇOS NÃO DOMÉSTICO/RESIDENCIAL REGULAR OU EM DESACORDO COM O USO RECOMENDADO.
- 5) AS DESPESAS DE TRANSPORTE DO APARELHO E/OU DO TÉCNICO AUTORIZADO CORREM POR CONTA DO CONSUMIDOR REQUERENTE DO SERVIÇO.
- 6) ESTE PRODUTO TEM **GARANTIA INTERNACIONAL**. O SERVIÇO TÉCNICO (DURANTE OU APÓS A GARANTIA É DISPONÍVEL EM TODOS OS PAÍSES ONDE ESTE PRODUTO É OFICIALMENTE DISTRIBUÍDO PELA PHILIPS. NOS PAÍSES ONDE A PHILIPS NÃO DISTRIBUI ESTE PRODUTO, O SERVIÇO DA PHILIPS LOCAL PODERÁ PRESTAR TAL SERVIÇO, CONTUDO PODERÁ OCORRER ALGUM ATRASO NO PRAZO DE ATENDIMENTO SE A DEVIDA PEÇA DE REPOSIÇÃO E O MANUAL TÉCNICO NÃO FOREM PRONTAMENTE DISPONÍVEIS.
- 7) A GARANTIA NÃO SERÁ VÁLIDA SE O PRODUTO NECESSITAR DE MODIFICAÇÕES OU ADAPTAÇÕES PARA HABILITÁ-LO A OPERAR EM QUALQUER OUTRO PAÍS QUE NÃO AQUELE PARA O QUAL FOI DESIGNADO, FABRICADO, APROVADO E/OU AUTORIZADO, OU TER SOFRIDO QUALQUER DANO DECORRENTE DESTES TIPO DE MODIFICAÇÃO.
- 8) ESTÃO EXCLUÍDAS DA GARANTIA ADICIONAL AS PILHAS OU BATERIAS FORNECIDAS JUNTO COM O PRODUTO.**

PHILIPS DA AMAZÔNIA INDÚSTRIA ELETRÔNICA LTDA.

DENTRO DO BRASIL, PARA INFORMAÇÕES ADICIONAIS SOBRE O PRODUTO OU PARA EVENTUAL NECESSIDADE DE UTILIZAÇÃO DA REDE DE OFICINAS AUTORIZADAS, LIGUE PARA O CENTRO DE INFORMAÇÕES AO CONSUMIDOR, OU ESCREVA PARA CAIXA POSTAL

No. 21315 CEP 04602-970 - SÃO PAULO - SP OU ENVIE UM E-MAIL PARA : cic@philips.com.br

HORÁRIO DE ATENDIMENTO: DE SEGUNDA A SEXTA-FEIRA, DAS 08:00 ÀS 20:00 H;

AOS SÁBADOS DAS 08:00 ÀS 13:00 H.

PARA ATENDIMENTO FORA DO BRASIL CONTATE A PHILIPS LOCAL OU A:

PHILIPS CONSUMER SERVICE

BEUKENLAAN 2

5651 CD EINDHOVEN

THE NETHERLANDS

CIC Centro de Informações
ao Consumidor

PHILIPS

Atendimento Especial:

0800 701 0245

atendimentoespecial@philips.com.br

Confeccionado em papel reciclado. A Philips contribuindo para a preservação do meio ambiente.