

Fold

Register your product and get support at  
[www.philips.com/welcome](http://www.philips.com/welcome)

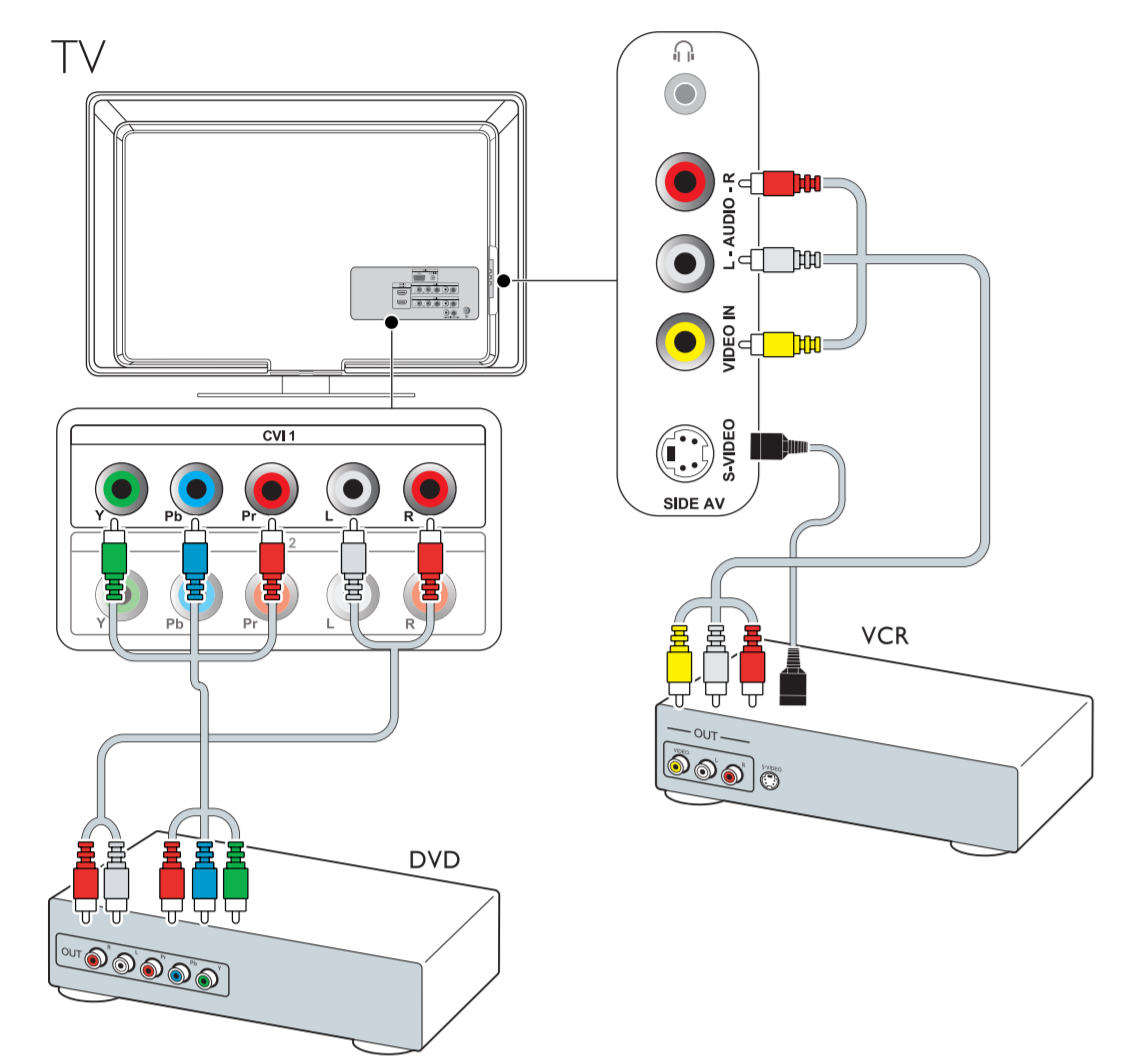
32PFL3403  
 37PFL3403  
 42PFL3403  
 47PFL3403

# Quick Start

- ZH** 设定
- EN** Installation

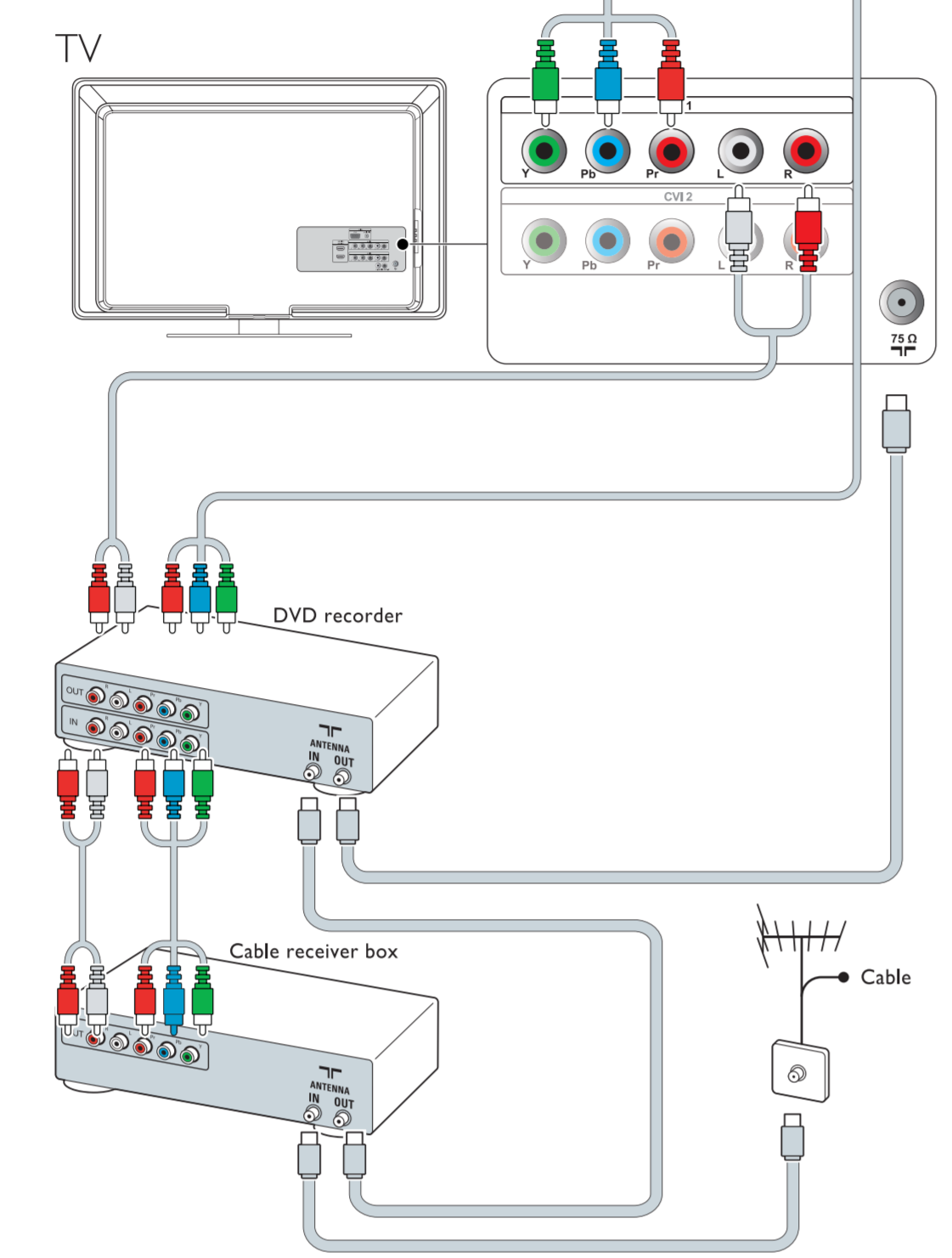
**PHILIPS**

## 6 DVD 播放器、VCR DVD player, VCR

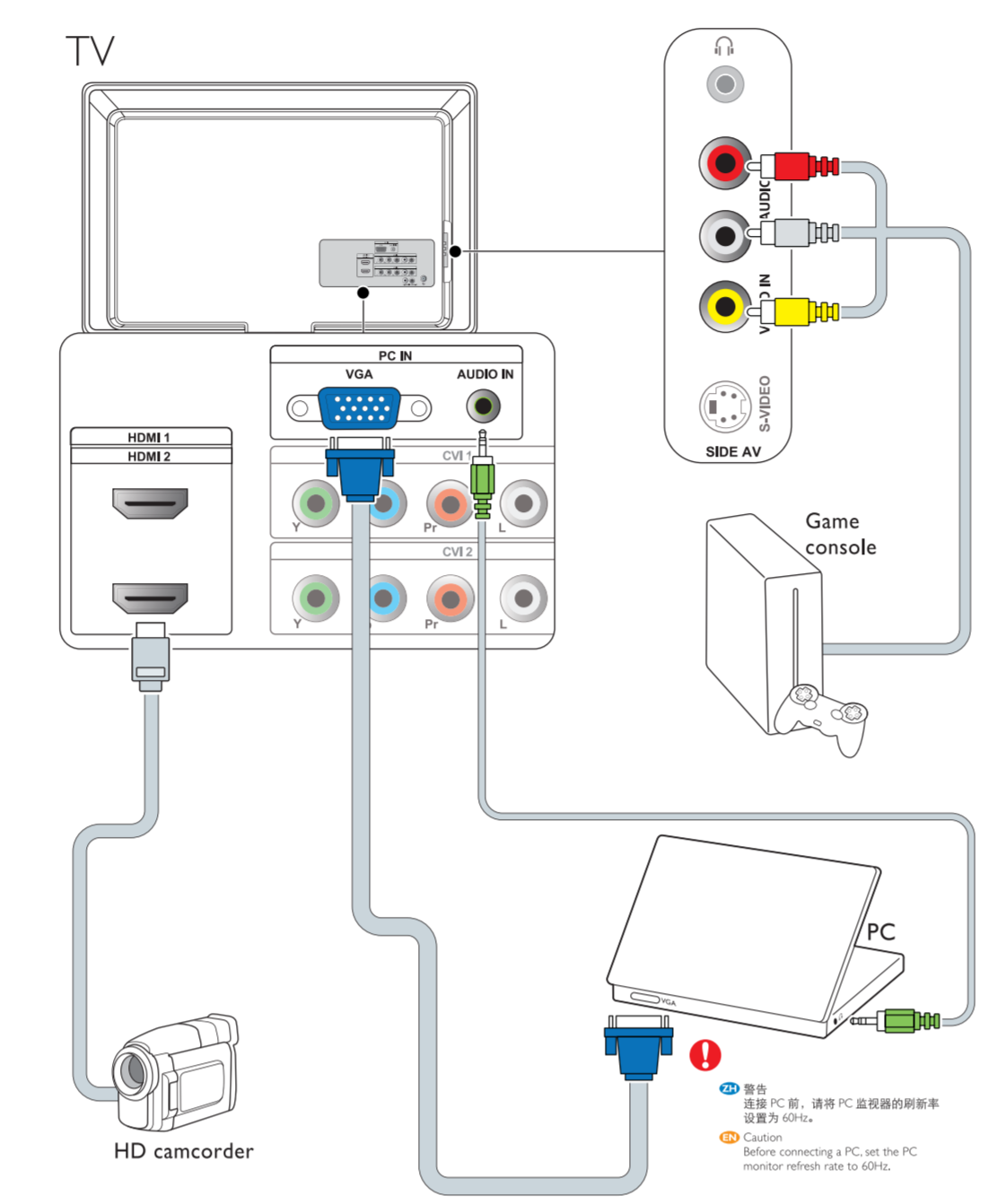


**PHILIPS**  
 Specifications are subject to change without notice.  
 Trademarks are the property of Koninklijke Philips Electronics N.V. or their respective owners.  
 © 2008 © Koninklijke Philips Electronics N.V. All rights reserved.  
[www.philips.com](http://www.philips.com)  
 Printed in China  
 P41TN018B13 1A

## 7 DVD 刻录机、有线接收机盒 DVD recorder, Cable receiver box



## 8 游戏机、HD 摄像机、PC Game console, HD camcorder, PC



## 9-a 首次设置 First time setup

**1** 选择菜单语言  
 Select the menu language

**2** 存储电视频道  
 Store TV channels

1. 按遥控器上的菜单，然后选择设定 > 语言。  
 2. 按 ▶ 以进入语言列表。  
 3. 按 ▲ 或 ▼ 选择语言，然后按确认进行确认。

1. Press MENU on the remote control and select Install > Language.  
 2. Press ▶ to enter the list of languages.  
 3. Press ▲ or ▼ to select your language, and press OK to confirm.

1. 按遥控器上的菜单，然后选择设定 > 自动搜寻。  
 2. 按 ▶ 可进入自动搜寻。  
 3. 按确认扫描频道。

1. Press MENU on the remote control and select Install > Auto store.  
 2. Press ▶ to enter Auto store.  
 3. Press OK to scan for channels.

## 9-b

完成自动搜寻可能需要 3 分钟的时间。请耐心等待自动搜寻完成。电视机会自动切换到第一个频道。

Auto Store can take up to 3 minutes to complete. Wait until auto storing is completed. The TV switches automatically to the first channel.

打开新电视机的包装并插上电源后，请立即运行自动搜寻功能，以便自动设置您所在地区可接收到的广播或有线频道。如果不运行自动搜寻功能设置频道，电视机可能不会正常工作。

运行自动搜寻后，请检查搜寻结果。按遥控器上的 频道 +/-，查看有哪些频道可供选择。

请记住，必须首先将天线或有线电视信号连接到电视机上。

Immediately after unpacking and plugging in your new TV, run Auto store to set up the broadcast channels or cable channels available in your area. If you do not run the auto store function to set up the channels, your TV might not operate properly.

After you have run Auto store, check out the results. Press CH+/- on the remote control and see which channels you can select.

Remember, an antenna or cable TV signal must first be connected to your TV.

## 包装清单 What's in the box

1 电视机  
 Television

2 电视机座和 4 个螺栓 (M5 x 10 毫米) (42/47" 中国型号中不包括)  
 TV stand and 4 x bolts (M5 x 10mm) (Not included in 42"/47" CHINA model)

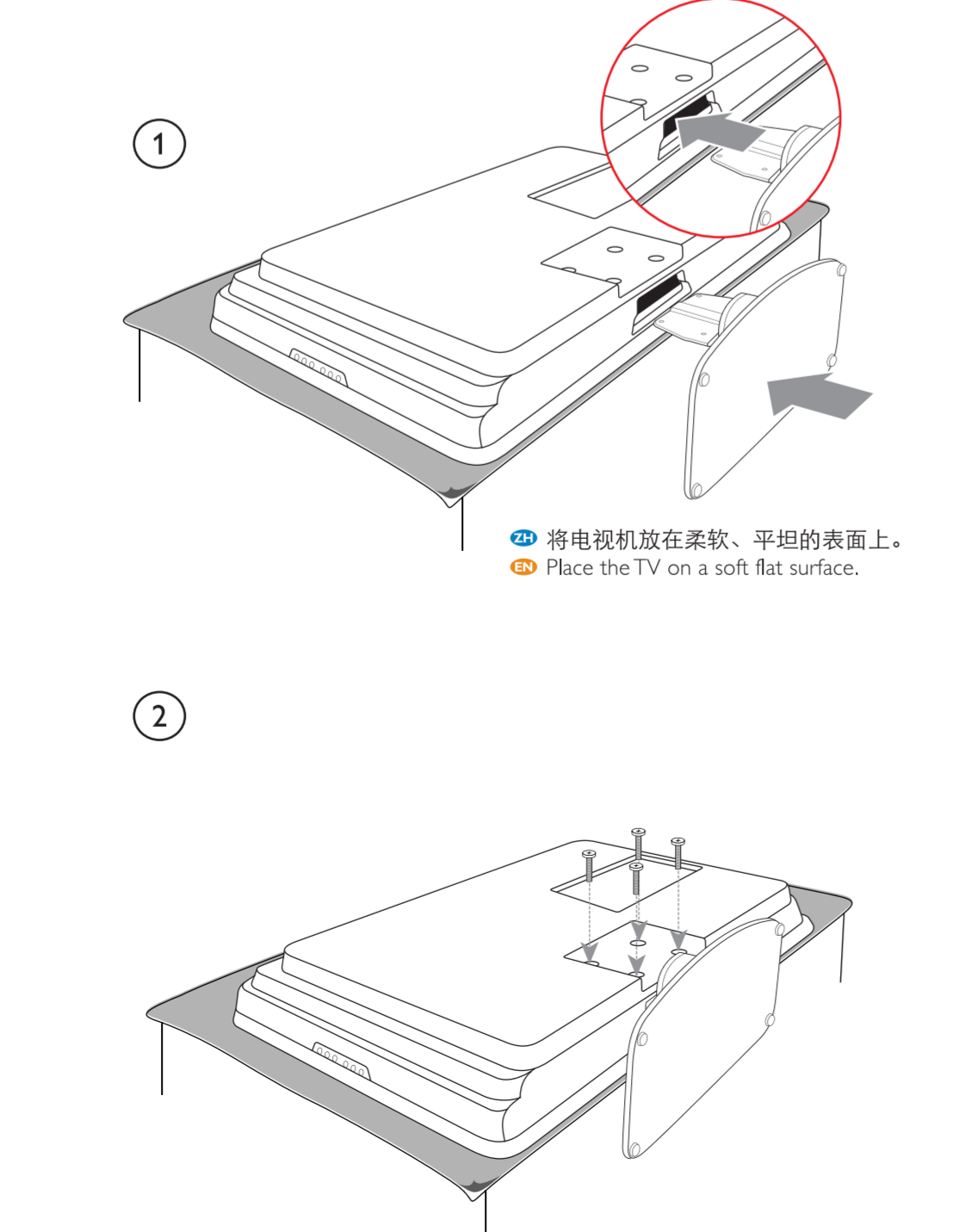
3 遥控器，带 2 节 AAA 电池 (42/47" 中国型号中不包括)  
 Remote control with 2 x AAA batteries

4 用户手册  
 User Manual

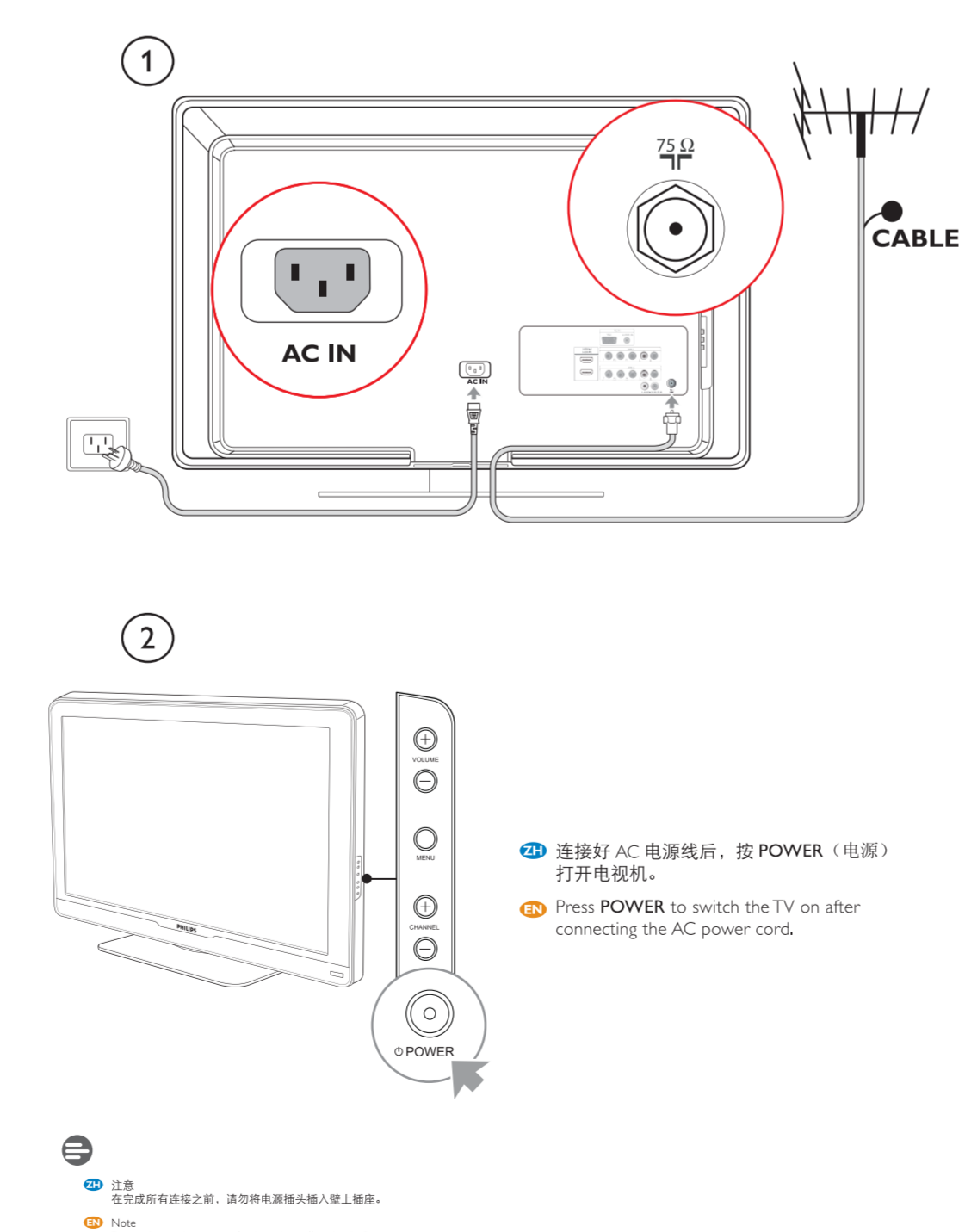
5 快速入门指南  
 Quick Start Guide

6 AC 电源线  
 AC power cord

## 1 安装电视机座 Mounting the TV stand



## 2 电源与天线 Power & antenna



## 3 遥控器 Remote control

1

2

电源  
 按下即可将电视机从待机模式打开，或关闭电视机以使其转到待机模式。  
 编号器  
 选择其它设备。  
 彩色按钮  
 按下即可选择任务。  
 菜单/退出  
 按菜单可以显示或关闭屏幕菜单。  
 方向与确认按钮  
 按 ▲、▼、◀、▶ 可以在电视机菜单中进行导航。  
 按确认按钮确认选择。

POWER  
 Press to turn on/off the TV from or to standby mode.

SOURCE  
 Selecting other devices.

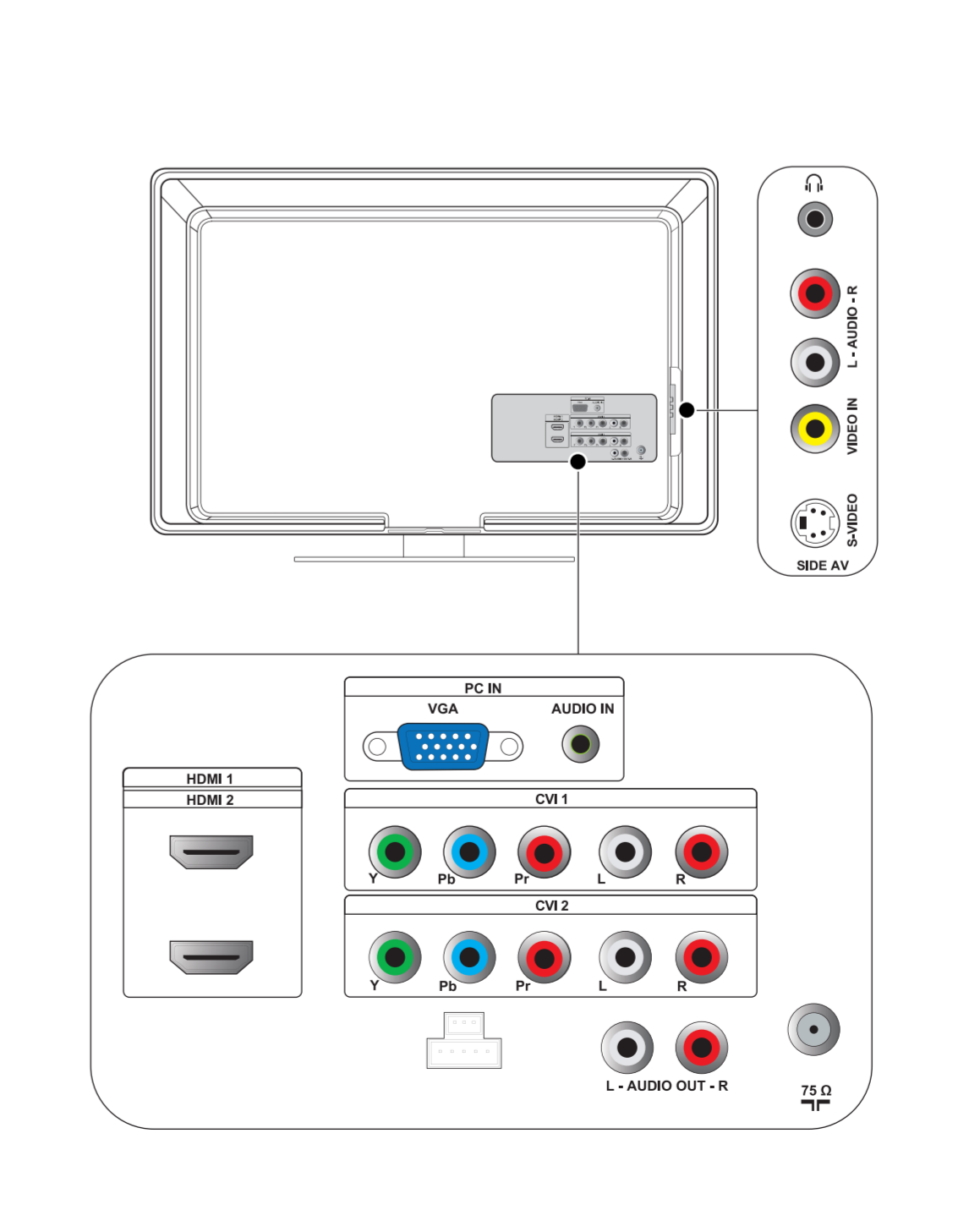
COLOR BUTTONS  
 Press to select a task.

MENU/EXIT  
 Press menu to activate on-screen menu on/off.

CURSOR AND OK BUTTONS  
 Press ▲, ▼, ◀, ▶ to navigate the TV menu.  
 Press OK to confirm selection.

注意  
 请务必将遥控器上接收器对准电视。否则，电视机的电源按钮可能不会完全关闭。  
 Note  
 You must aim the power plug into the wall socket before all the connections are made.

## 4 背面与侧面插口 Rear & side connectors



## 5 Blu-ray 影碟播放机、HD 游戏机 Blu-ray Disc player, HD game console

