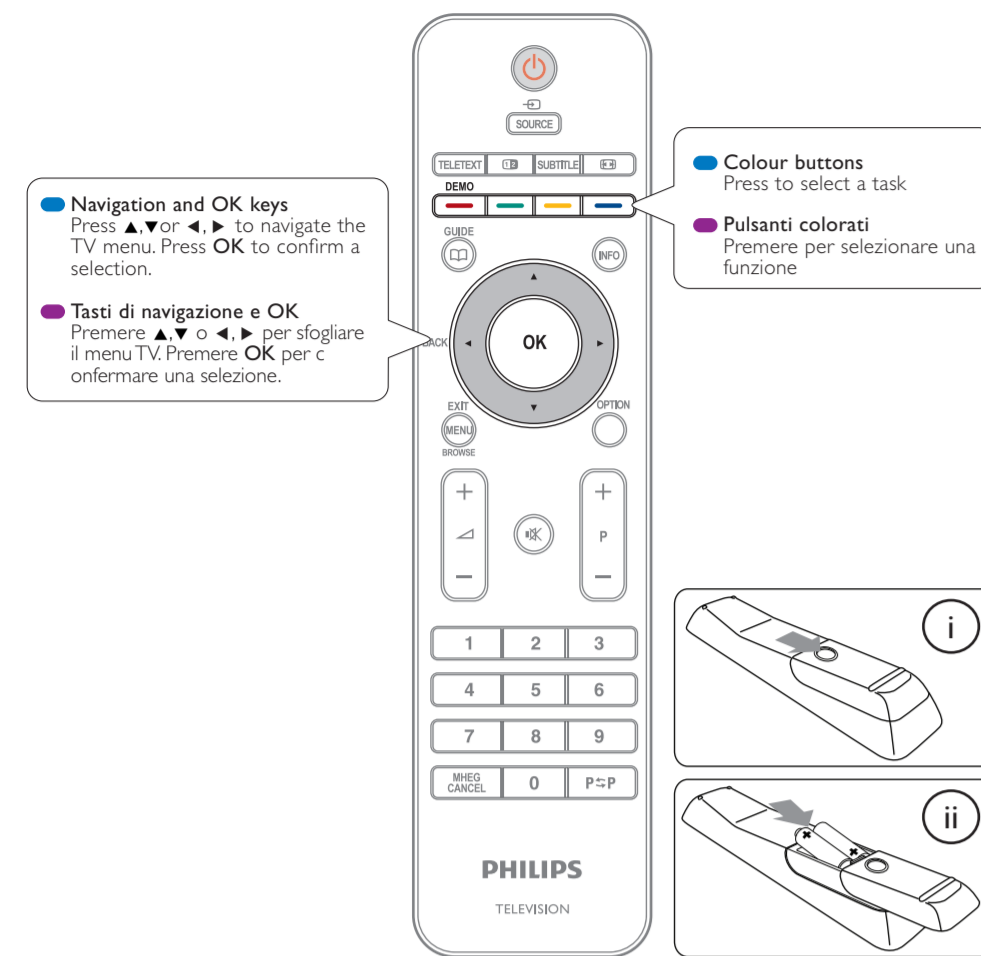


## 8 Use the remote control

Utilizzare il telecomando

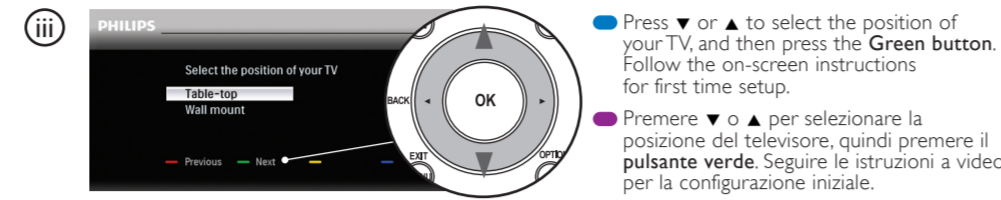
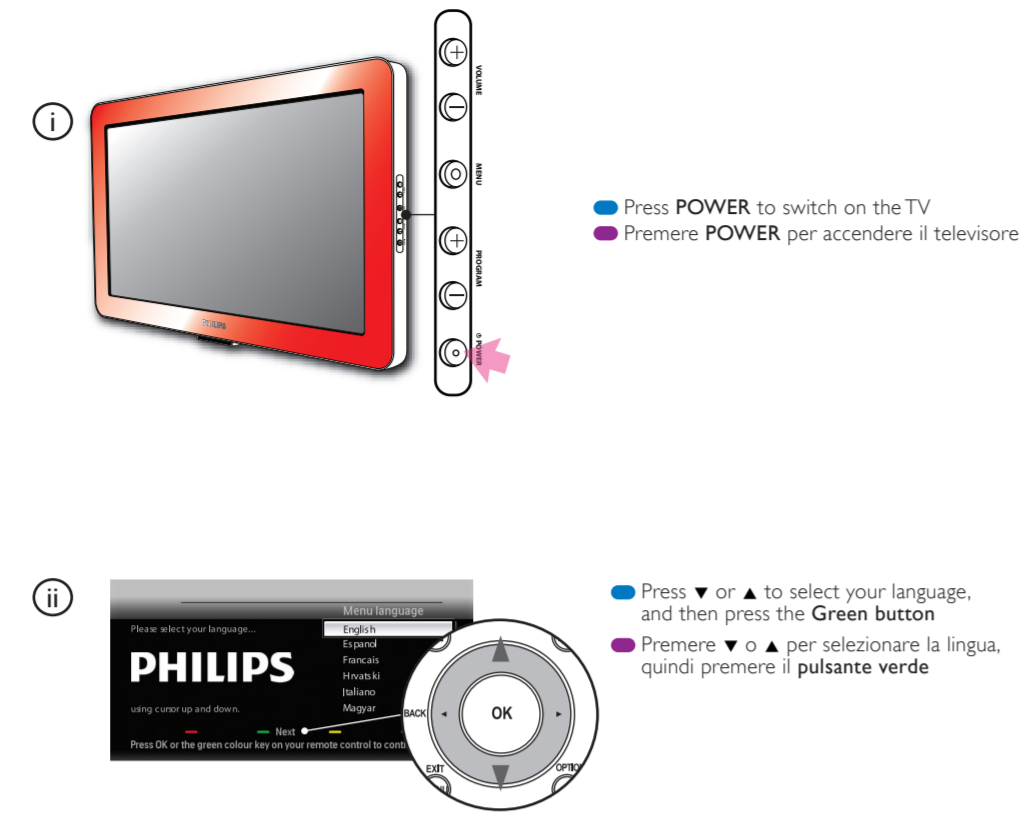


Specifications are subject to change without notice.  
Trademarks are the property of Koninklijke Philips Electronics N.V. or their respective owners.  
2008 © Koninklijke Philips Electronics N.V. All rights reserved.  
www.philips.com



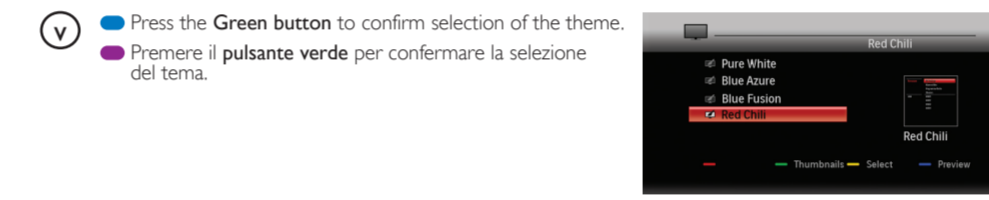
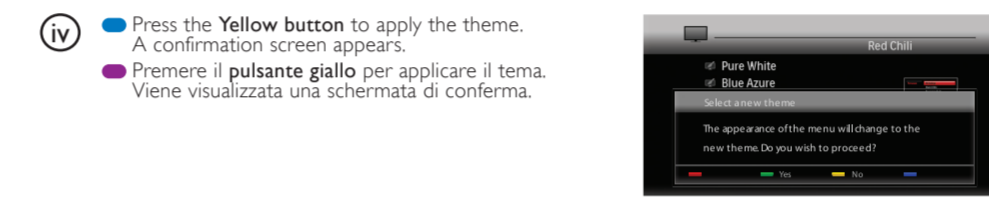
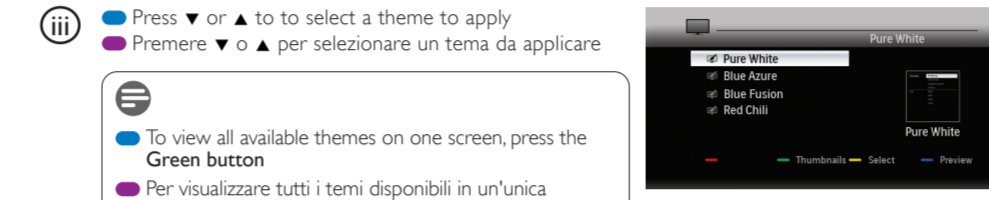
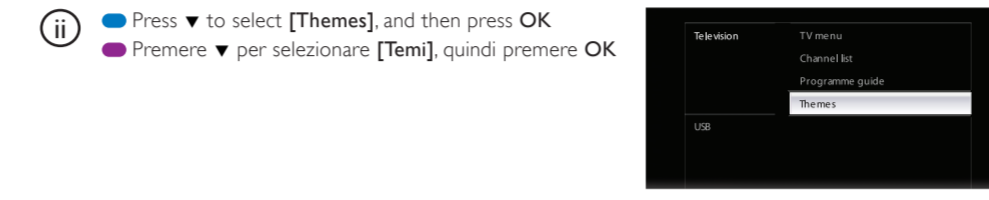
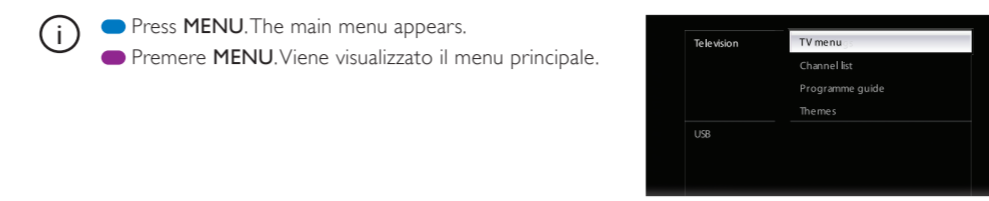
## 9 Run first time setup

Eseguire la configurazione iniziale



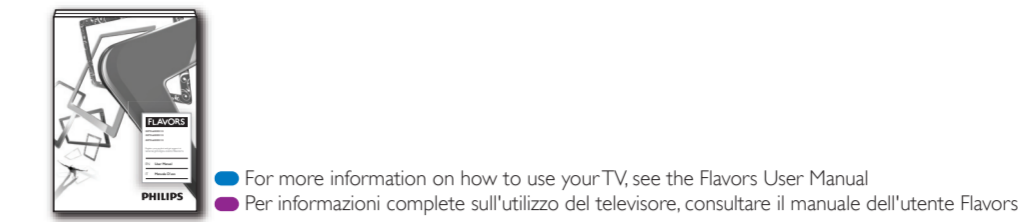
## 10 Apply a menu theme

Applicare un tema del menu



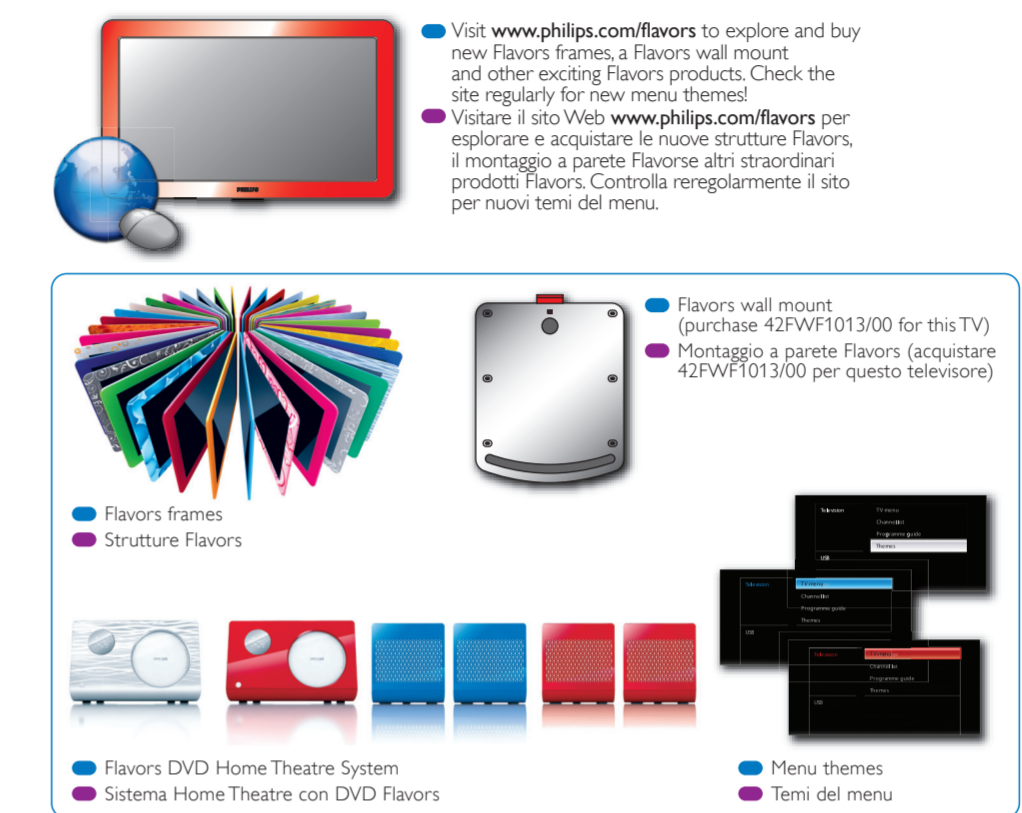
## For more information

Per ulteriori informazioni



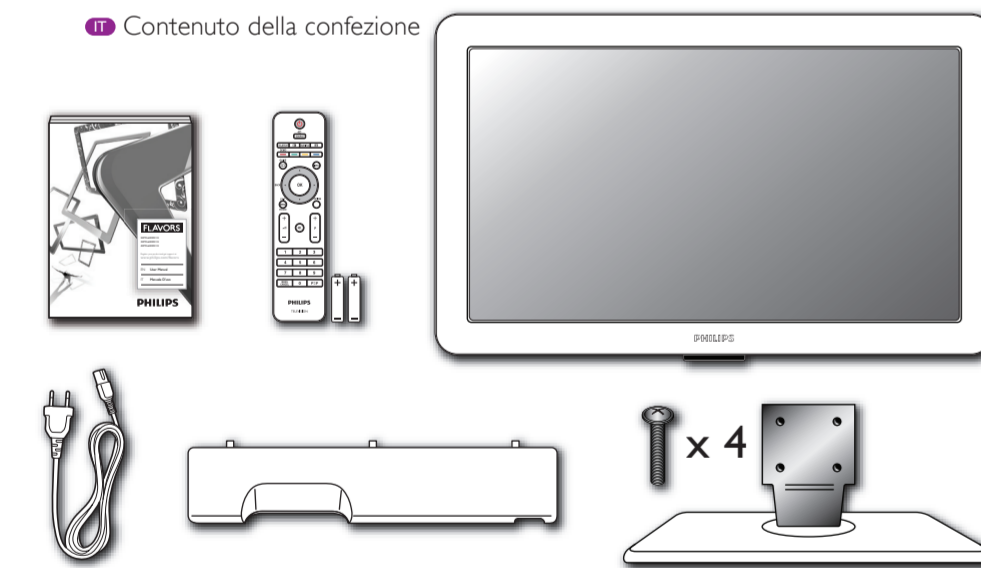
## For more Flavors

Per ulteriori informazioni su Flavors



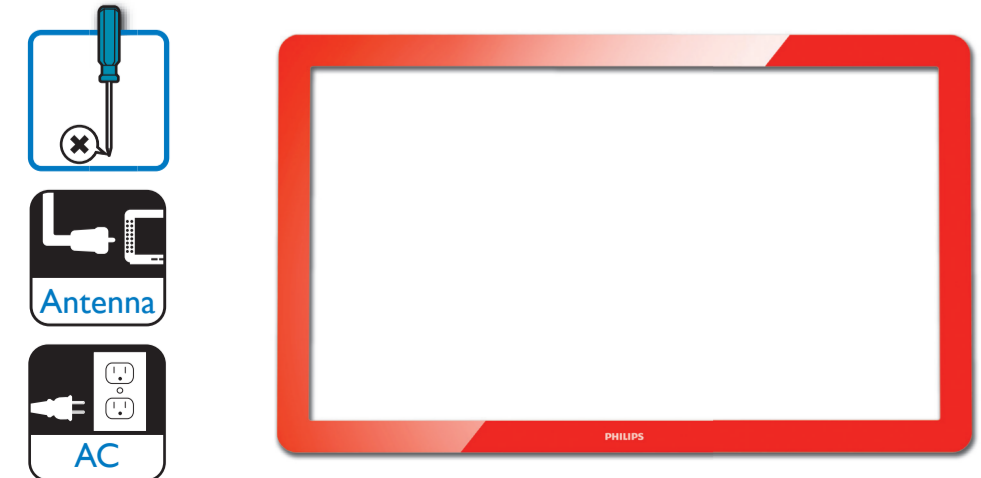
## 11 Check what's in the box

Contenuto della confezione



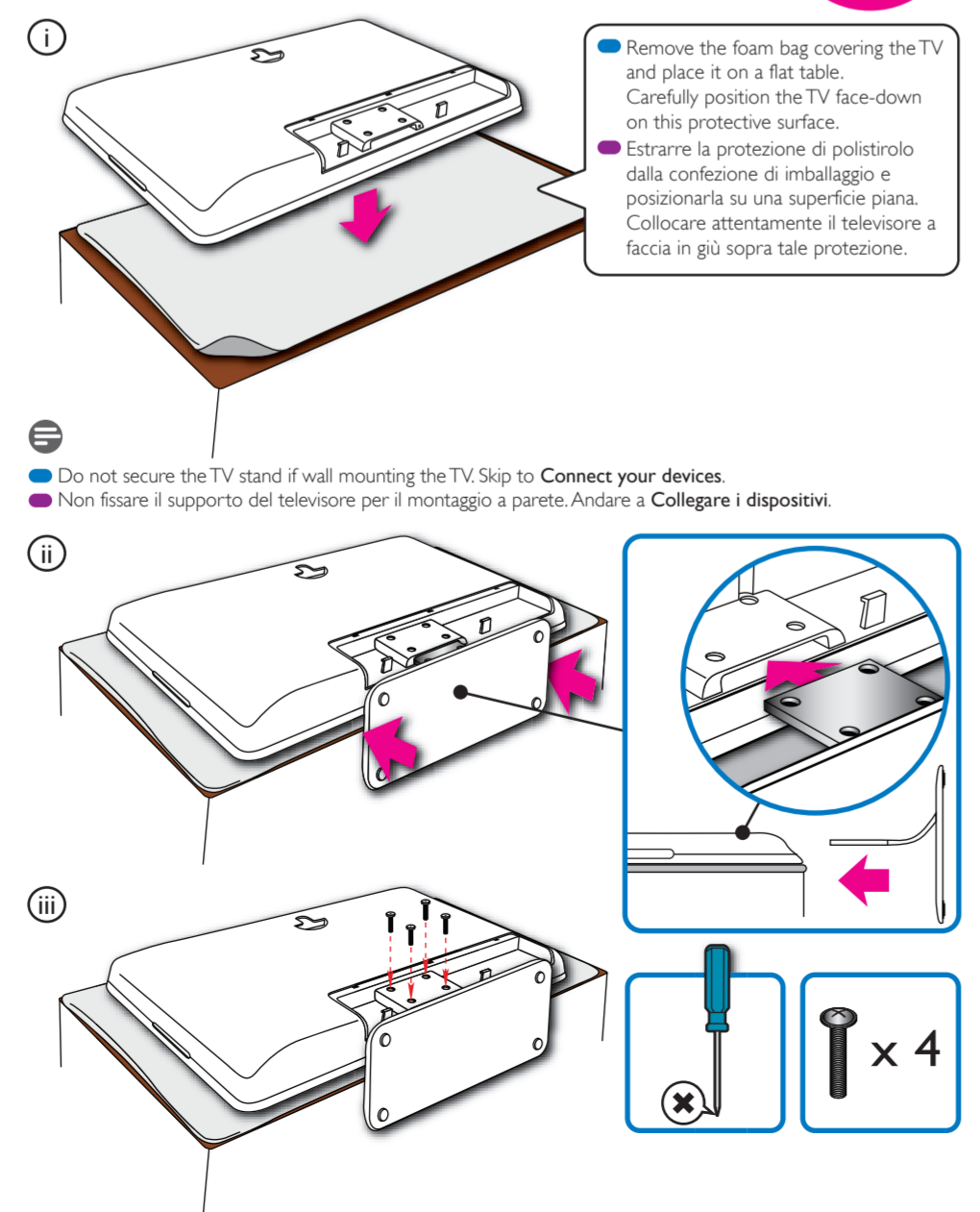
## 12 What else you will need

Altri strumenti necessari



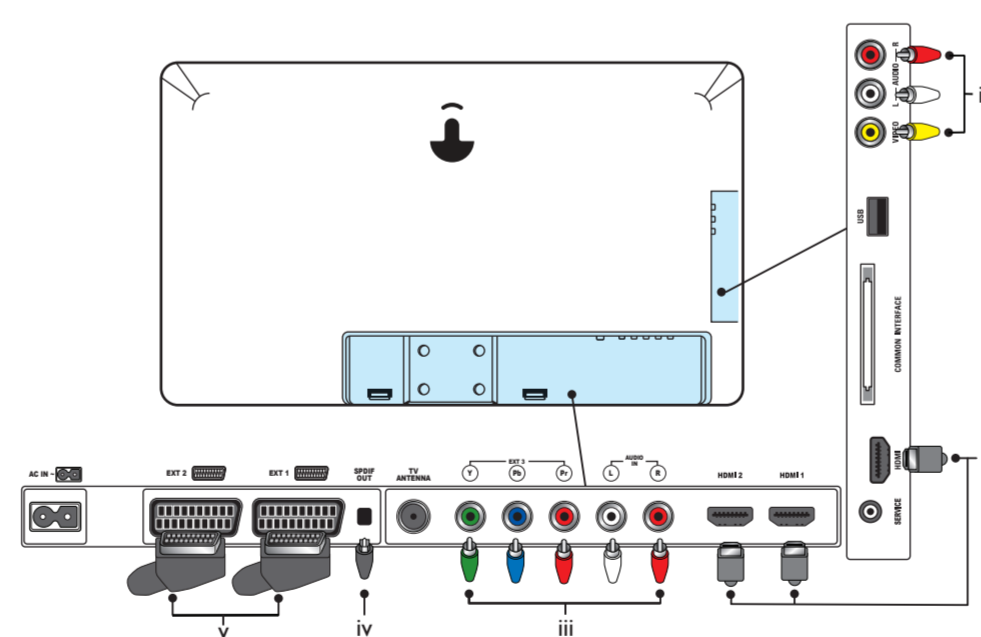
## 13 Secure the TV stand

Fissare il supporto del televisore



## 14 Connect your devices

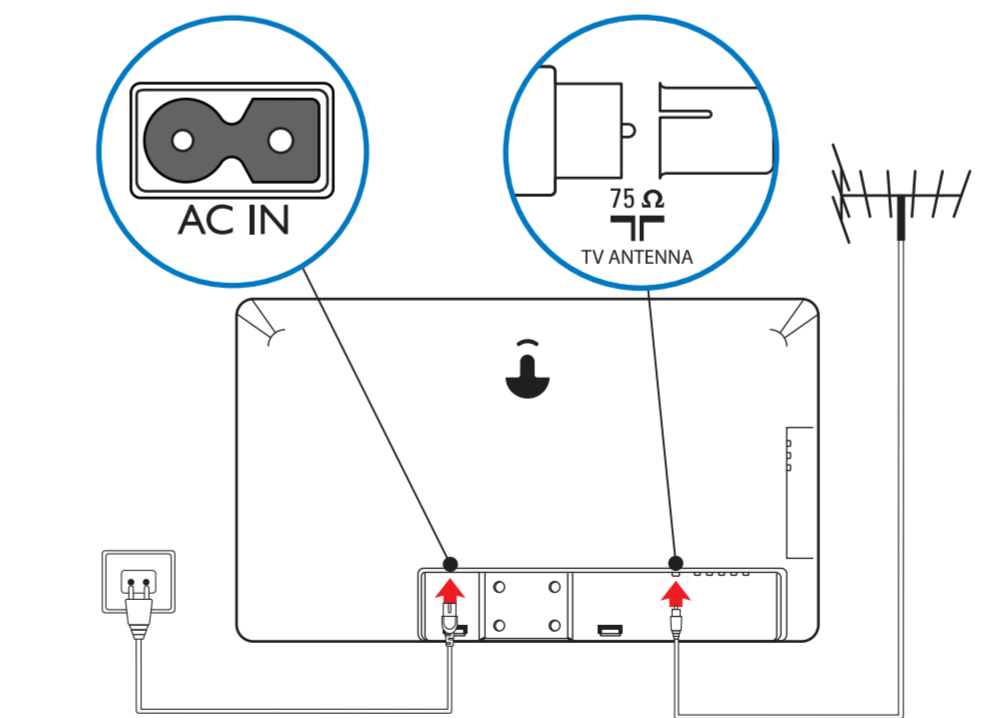
Collegare i dispositivi



- i** **VIDEO and AUDIO L/R:** Connect composite devices such as VCRs. Average video quality.  
**VIDEO e AUDIO L/R:** Collegare i dispositivi Composite come i videoregistratori. Qualità video media.
- ii** **HDMI:** Connect HD devices such as Blu-ray players. Best digital video quality.  
**HDMI:** Collegare i dispositivi HD come i lettori Blu-ray. Qualità video digitale ottima.
- iii** **Y Pb Pr (EXT 3) and AUDIO IN L/R:** Connect component devices such as DVD players. Best analogue video quality.  
**Y Pb Pr (EXT 3) e AUDIO IN L/R:** Collegare i dispositivi Component come i lettori DVD. Qualità video analogica ottima.
- iv** **SPDIF OUT (Optical):** Output TV audio to digital audio systems  
**SPDIF OUT (Optical):** Dall'uscita audio del televisore ai sistemi audio digitali
- v** **SCART (EXT 1/2):** Connect SCART devices such as DVD players. Good analogue video quality.  
**SCART (EXT 1/2):** Collegare i dispositivi SCART come i lettori DVD. Qualità video analogica buona.

## 15 Connect the mains cord and antenna

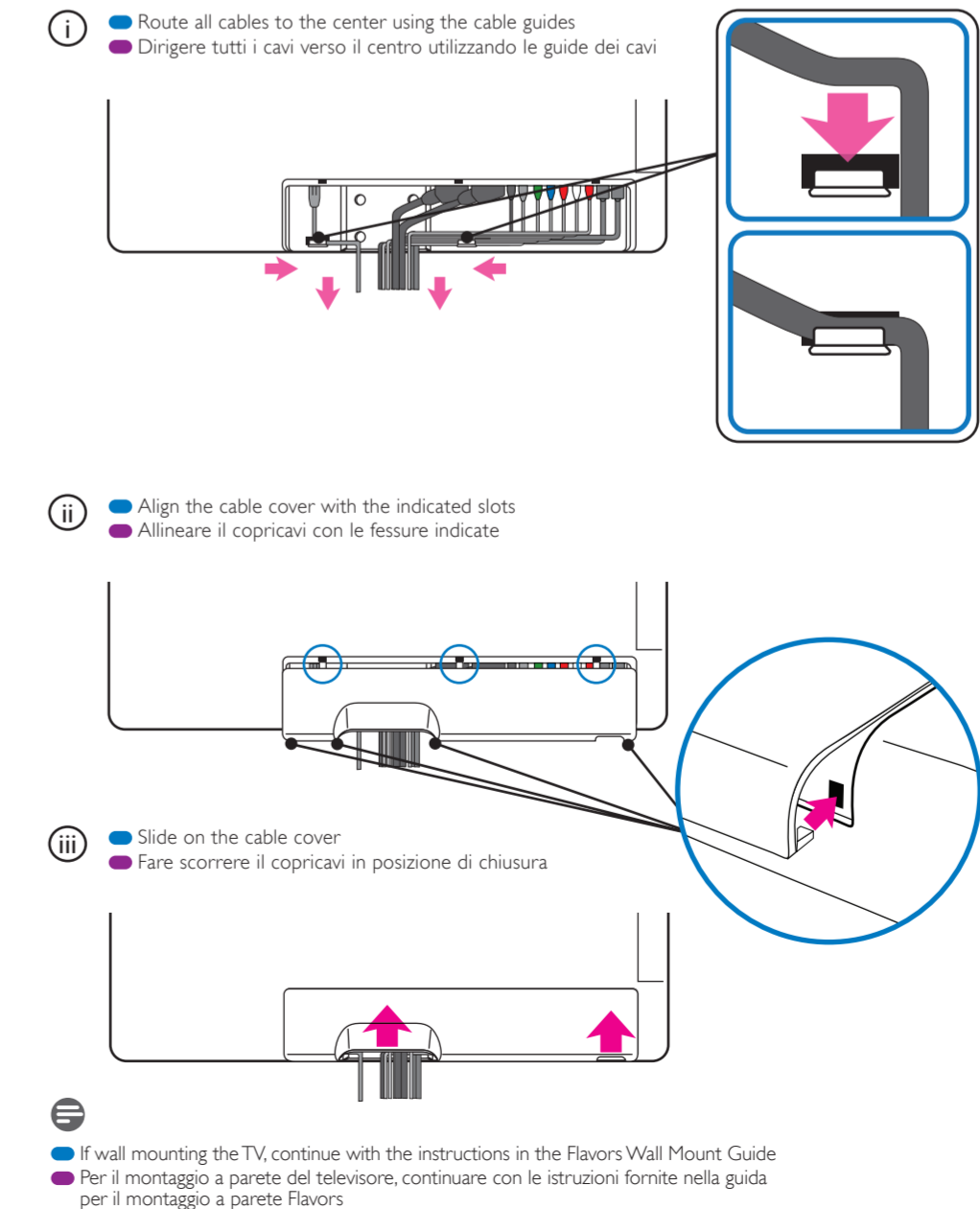
Collegare il cavo di alimentazione e l'antenna



- i** Before you connect the TV to the power outlet, ensure that the power voltage matches the value printed under the cable cover.  
To easily disconnect the TV from the power outlet, ensure that you have full access to the power cord at all times. When you disconnect the power cord, always pull the plug, never the cable.  
Prima di collegare il televisore alla presa di corrente accertarsi che la tensione di alimentazione corrisponda al valore stampato sotto il copricavi.  
Per scollegare facilmente il televisore dalla presa di corrente, accertarsi di poter accedere al cavo di alimentazione in qualsiasi momento. Estrarre sempre il cavo di alimentazione afferrando la spina e non il cavo.

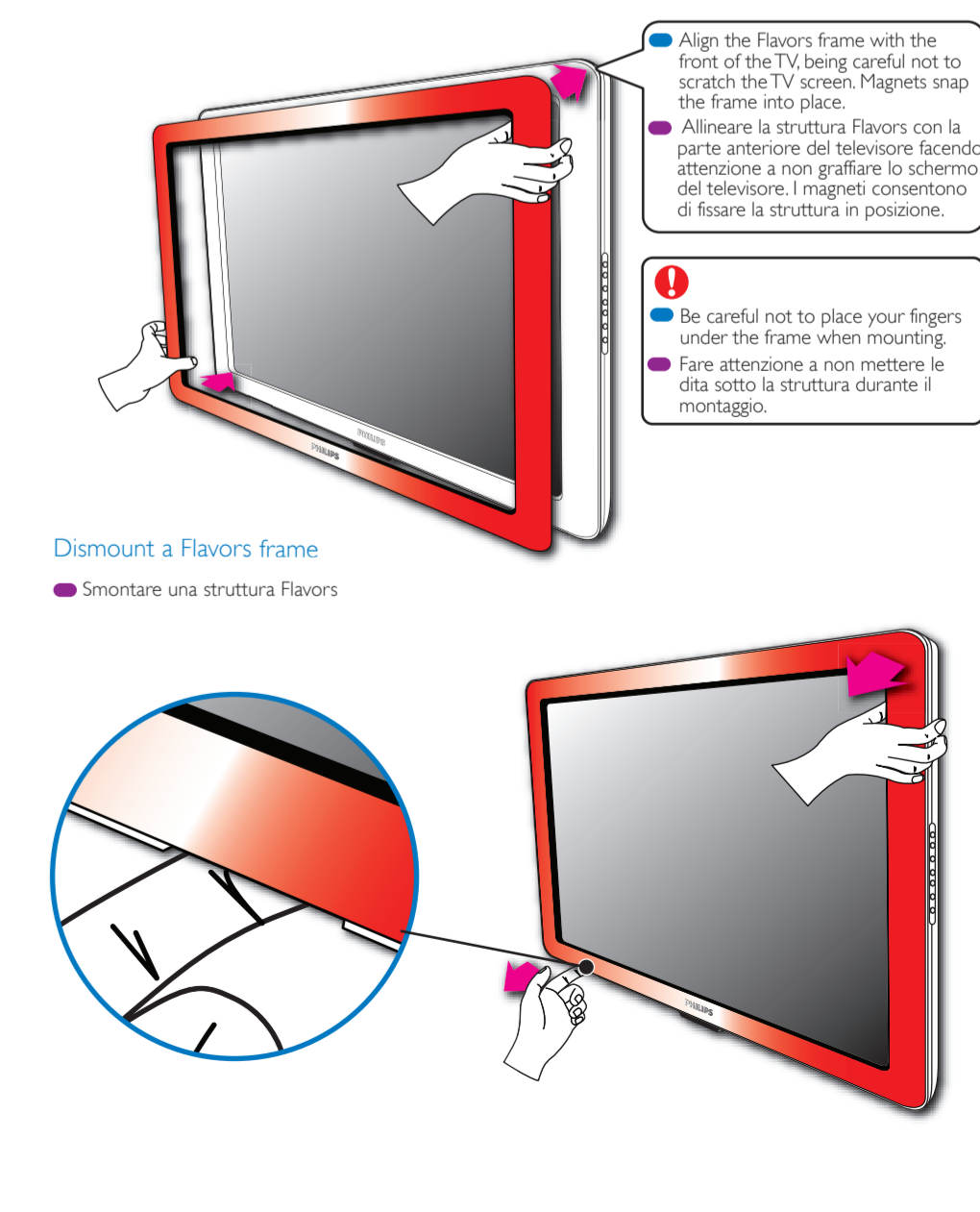
## 16 Tidy cables and slide on the cover

Sistemare i cavi e fare scorrere il copricavi in posizione di chiusura



## 17 Mount a Flavors frame

Montare una struttura Flavors



**FLAVORS**

Quick Start Guide

42PFL6403D/12

Register your product and get support at  
[www.philips.com/flavors](http://www.philips.com/flavors)

**EN** TV installation

**IT** Installazione del televisore

**PHILIPS**