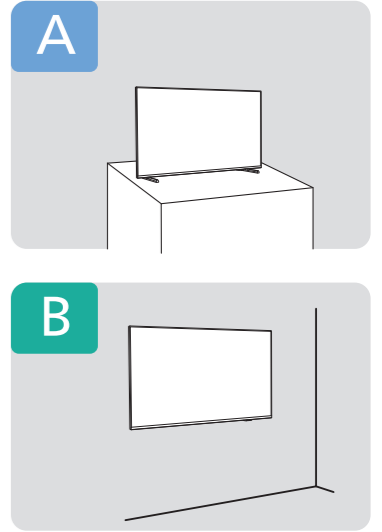
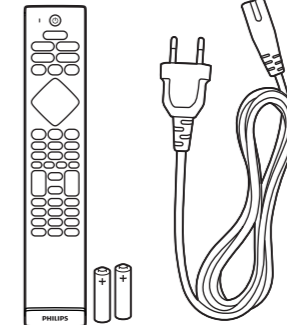
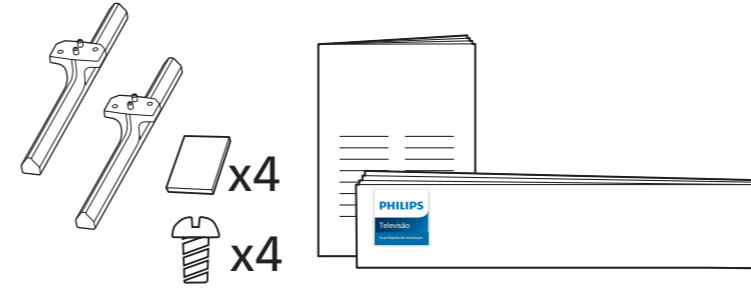
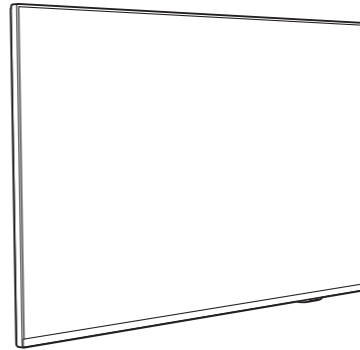


PHILIPS

Televisão

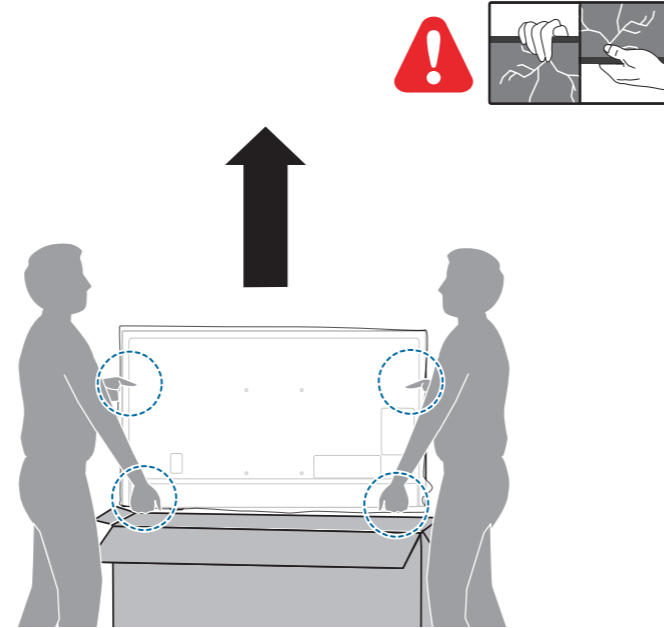
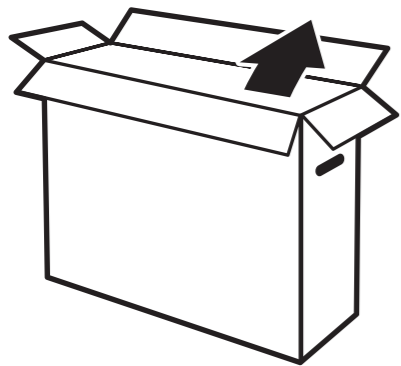
Guia Rápido de Instalação

50PUG7907/78

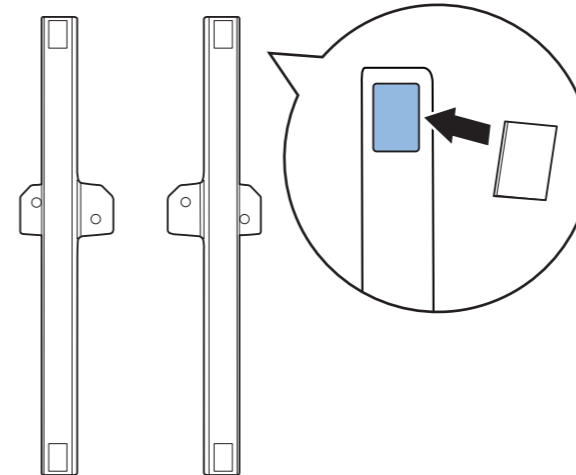


A

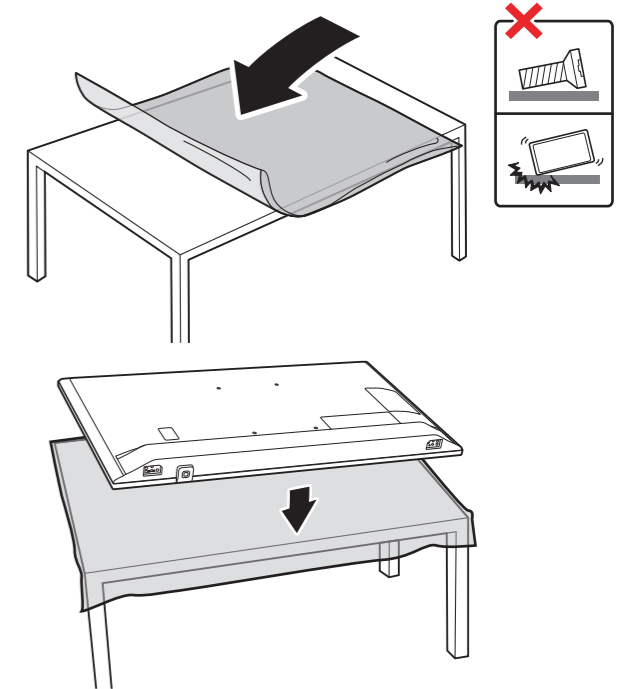
50"



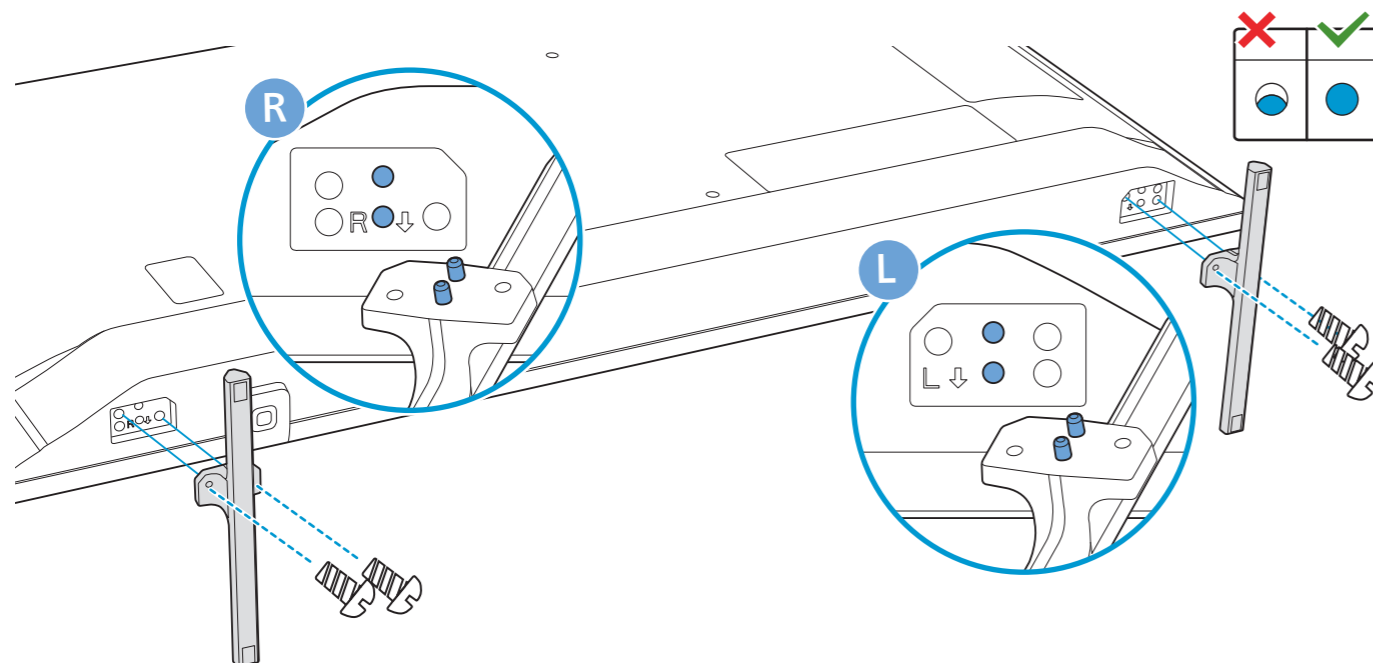
1



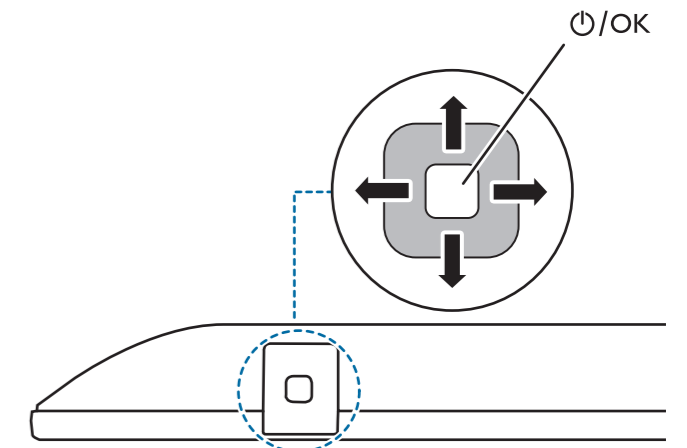
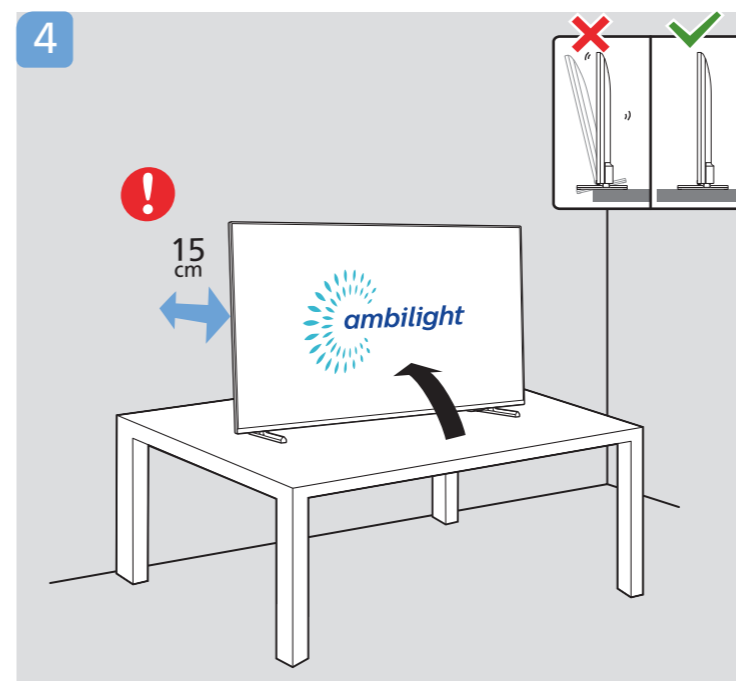
2



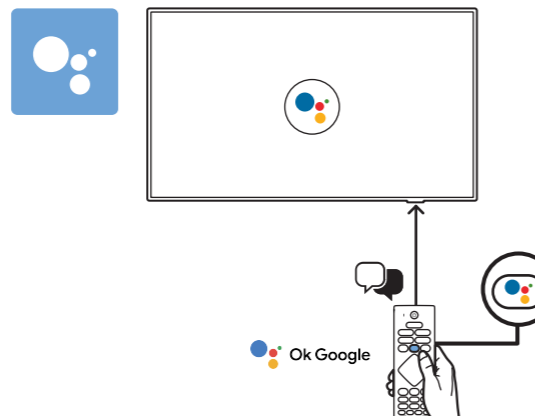
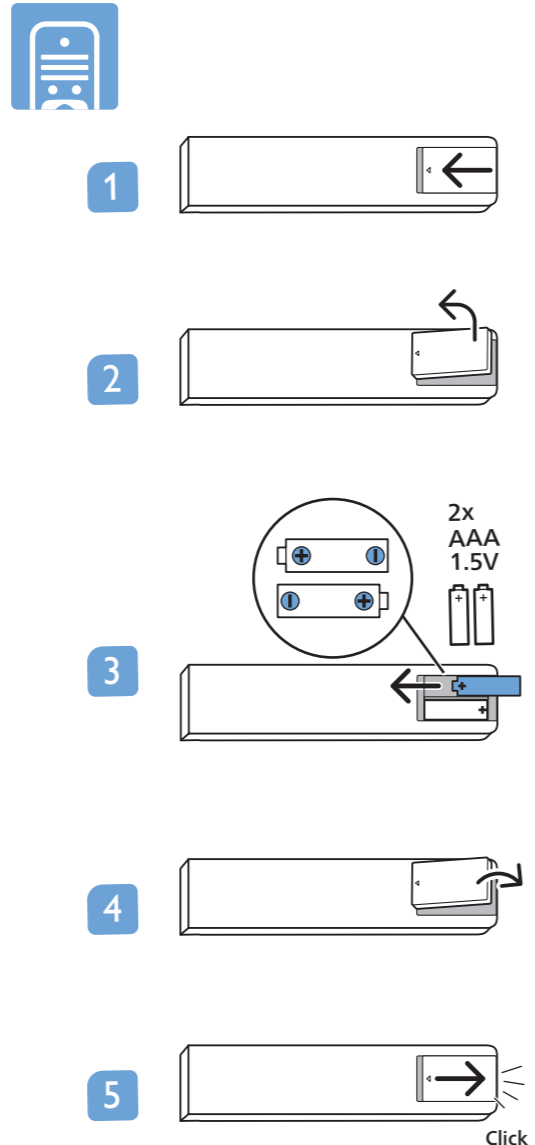
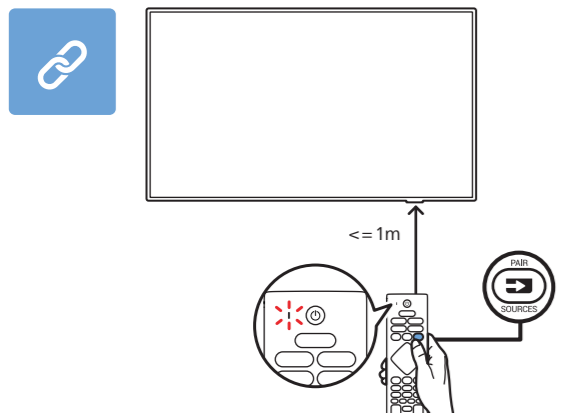
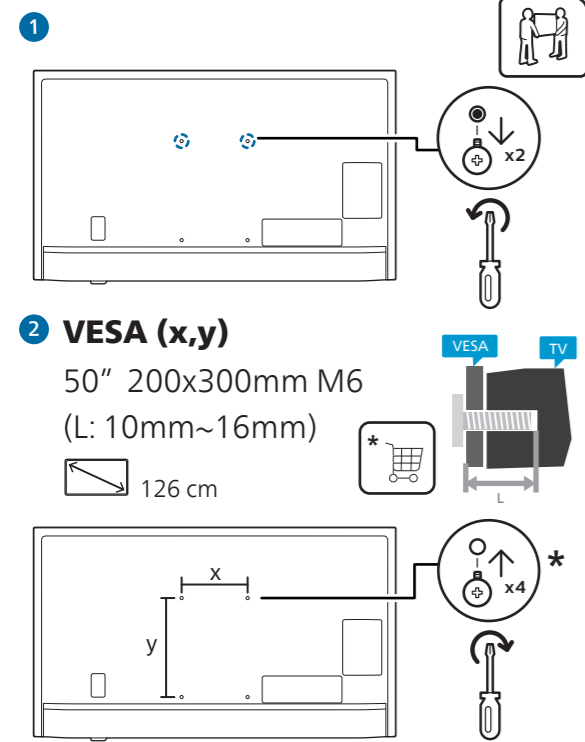
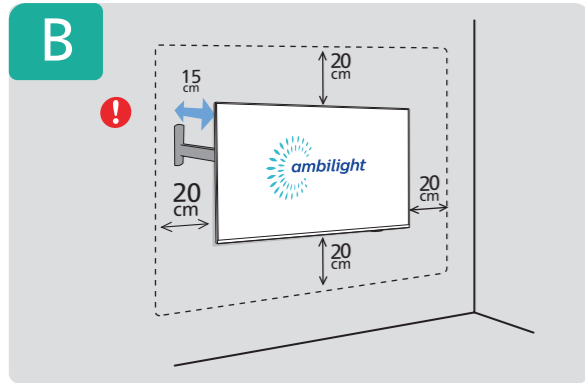
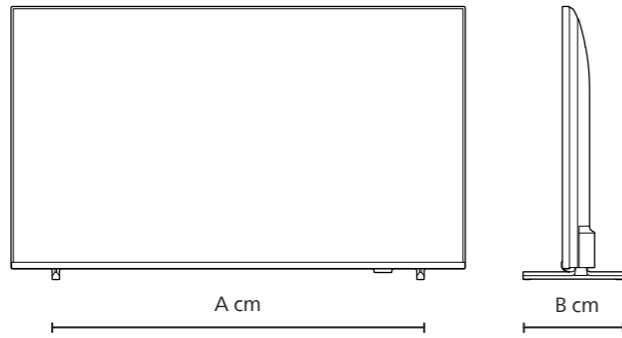
3



4



	A	B
50"	91.4	24.6

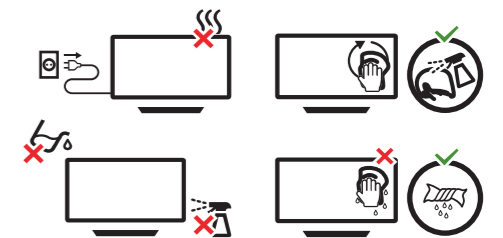
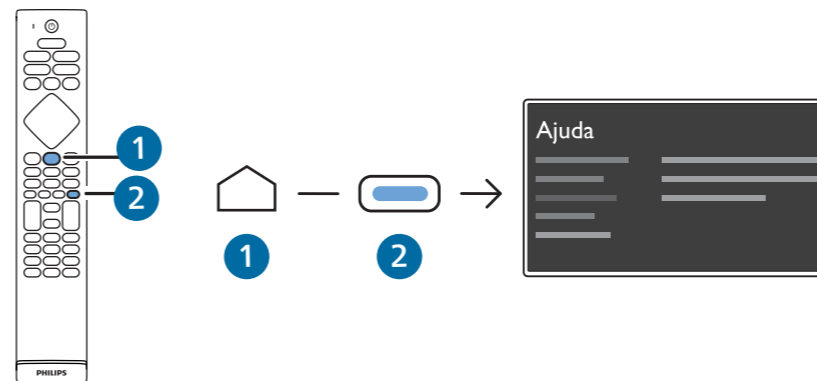
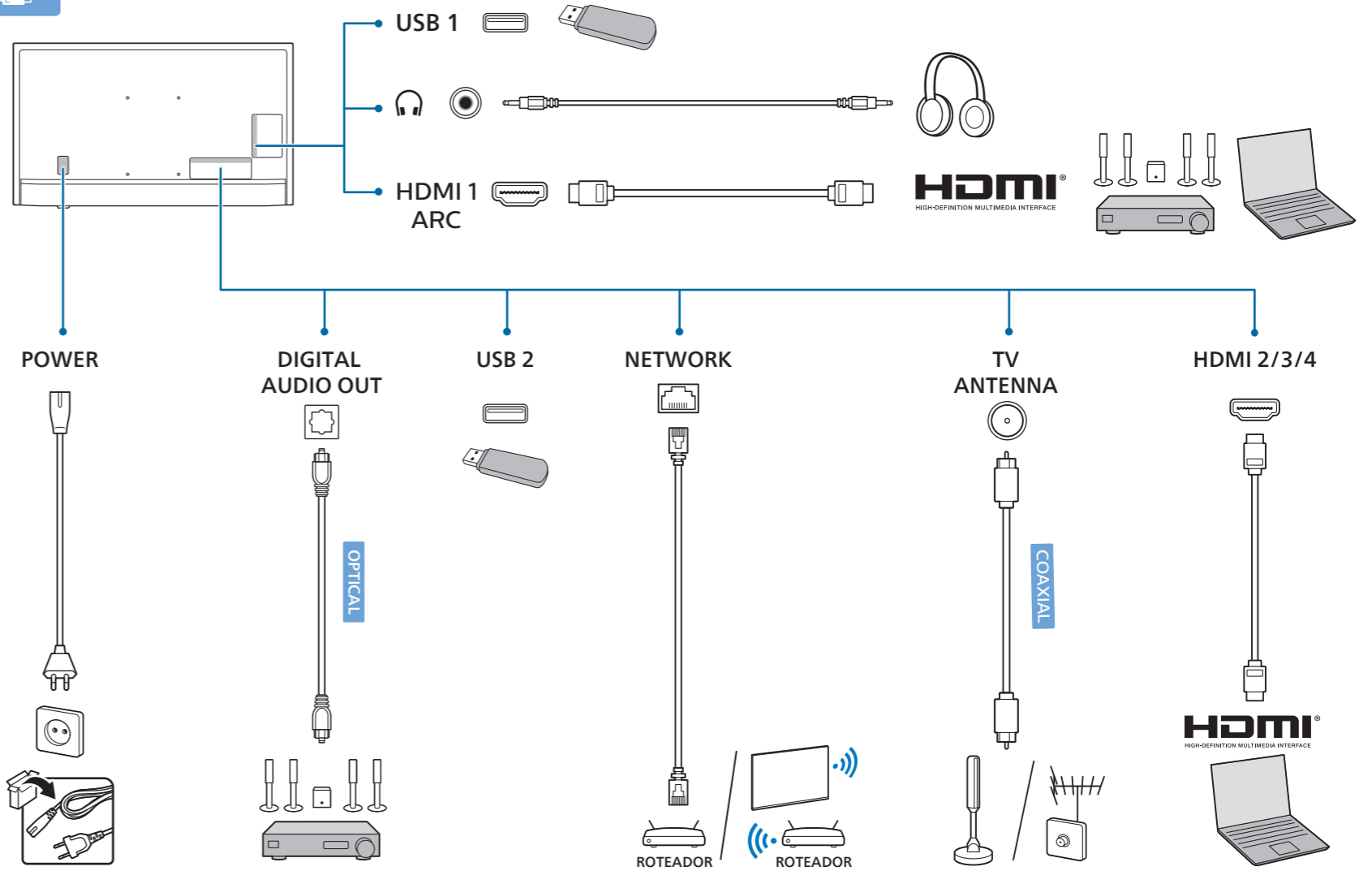
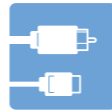
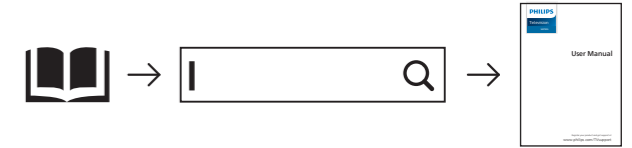


English Read the safety instructions.

Português Leia as instruções de segurança.



Registre seu produto e obtenha suporte em www.philips.com/TVsupport



All registered and unregistered trademarks are property of their respective owners. Specifications are subject to change without notice. Philips and the Philips' shield emblem are trademarks of Koninklijke Philips N.V. and are used under license from Koninklijke Philips N.V. This product has been manufactured by and is sold under the responsibility of TP Vision Europe B.V., and TP Vision Europe B.V. is the warrantor in relation to this product. 2022 © TP Vision Europe B.V. All rights reserved. www.philips.com/welcome