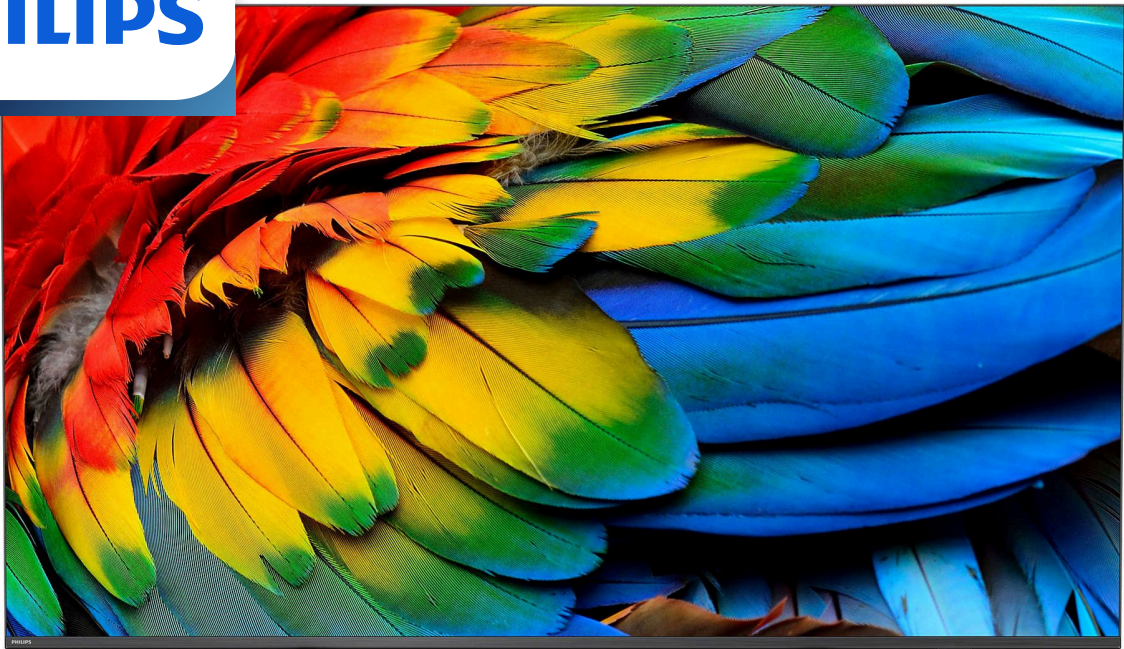


PHILIPS



Professional TV

58" Mediasuite

powered by Android™



58HFL6214U

Smarter connectivity

with Chromecast built-in and Netflix

Designed for a fast-paced world, MediaSuite features advanced connectivity and versatile configuration settings. Chromecast built-in makes streaming fast and easy, while Android™ and Google Play Store unleash infinite possibilities.

Cost-effective with reliable support

- 3 years warranty, extendable to 5 years

Rapid installation. Total control.

- Instant Initial Cloning. Rapidly install your Pro TVs
- Supports Pro:Idiom™ encrypted content
- Install and manage apps remotely with AppControl
- Create custom experiences with CMND & Check-in
- Operate, monitor and maintain via CMND & Control

Android-powered. Ready for anything.

- Be seen. Brand the TV's UI with your logo
- Chromecast™ built-in for easy content sharing
- Google Assistant™ enables faster, smarter control
- Google Play Store access for apps and media
- Integrated Netflix with dedicated remote button
- SmartPlug Xpress interface

Highlights

UI branding

Your Philips Professional TV offers a clear, easy-to-navigate user interface (UI), which you can customize with your own branding. Easily add your logo and colors to the search bar to increase the visibility of your brand.

Chromecast built-in

Enable instant, secure wireless casting of movies, presentations, and more from smart devices (mobiles, laptops, tablets) in up to 4K resolution. Chromecast is cost-effective, requires no extra hardware, and is secure for professional use. Users simply tap the Chromecast icon on their smart device to start streaming content from thousands of cast-enabled apps-their smart device becomes the remote.

Google Play Store access

Full access to the entire Google Play Store makes it easy to add apps, games, music, movies, and more to your Philips Professional Display. New business tools and extra entertainment options are added to the catalogue daily, ensuring that you always have access to the latest global trends.

Google Assistant™

Voice control and faster answers are here with the optional Google Assistant™ enabled remote control (22AV2025B/00). Open YouTube. Turn the volume up. Play your favourite songs, and get all the info you need such as weather updates, things to do, and even spoken translations in an instant. With Google Assistant™, the possibilities are endless.

Integrated Netflix

Integrated Netflix access makes watching the latest movies and shows from your account easier, faster and more convenient. There's no need for any external players or satellite TV, which helps keep operational costs down and installations neat, whilst maintaining a modern look for your establishment. A dedicated Netflix button on the remote provides instant access for efficient usability. Terms and conditions apply for Netflix activation.

SmartPlug Xpress

The SmartPlug Xpress communication port (RJ-12) is compatible with major premium entertainment services. The protocol enables the TV connection with external decoders, set-top boxes and PC based solutions.

AppControl

Take full, centralised control of the apps installed on your Philips Professional Displays. AppControl lets you install, delete, and manage apps on selected Displays or your entire network so that you can offer personalized experiences to your guests and customers-no matter how many displays you are managing.

CMND & Check-in

Make visitors feel welcome. CMND & Check-in lets you use individual information-such as name and language spoken-to create a personalized experience. Whether you're adding special touches for hotel guests, streamlining the billing process, or offering multiple channel packages.

CMND & Control

Run your display network over a local (LAN or RF) connection. CMND & Control allows you to perform vital functions like updating software and settings, as well as monitoring display status. Whether you're in charge of one TV or more, CMND & Control makes managing your fleet easy.

Specifications

Picture/Display

Diagonal screen size (inch): 58 inch

Display: 4K Ultra HD LED

Panel resolution: 3840x2160p

Brightness: 400 nit

Supported Display Resolution

HDMI: Up to 3840x2160p@60Hz

USB, LAN: HEVC: up to 3840x2160@60Hz,

Others: up to 1920x1080p@60Hz

Tuner/Reception/Transmission

Digital TV: 8VSB ATSC; 256QAM Cable

Analogue TV: NTSC

IP Playback: Multicast, Unicast, HLS, OTT App Channels

Android TV

OS: Android TV™ 9 (Pie)

Pre-installed apps: Netflix*, YouTube, Google Play Store*, Google Play Movies, Google Play Games, YouTube Music

Memory size(Flash): 16GB*

Hospitality Features

Hotel mode: Switch-ON Settings Control, Volume limitation, Installation Menu Lock, Menu lock, Joystick Control Lock, Prison mode

Power control: Quick Start Mode, Auto Power ON, Auto Power OFF

Your brand: Customizable Home Screen, Customizable Welcome App, Location Name (Geonames ID), CMND&Create, Custom Dashboard (HTML&APK)

CMND&Control: Off-Line Channel Editor, Off-Line Settings Editor, Remote Management over IP/RF, TV Group management, Local Updates via USB, Instant Initial Cloning

Control: AppControl, JEDI Native Android TV Control, JSON API for TV Control-JAPIT, Crestron Connected, Joystick

Interactive DRM: VSecure, Playready Smoothstreaming, Securemedia, Pro:Idiom

Revenue generation: MyChoice

Remote Control: Low Battery Detection, RC Battery Door Lock

CMND&Check-In: Guest Name, Guest Language, Messages, Bill on TV, Express Checkout

Sharing: Chromecast Ultra built-in, Secure Sharing, Network-managed Sharing

Convenience: Google Assistant*, Google

Account Login, Weather Forecast, >40 Supported Menu Languages, Clock in OFF mode, Theme TV, Wake Up Alarm, Sleep Timer

Healthcare features

Control: Multi-Remote Control

Convenience: TalkBack, Independent main speaker mute

Safety: Double isolation class II, Flame retardant

Multimedia

Video playback supported: Formats:

H.264/MPEG4 AVC, MPEG1, MPEG2, MPEG4, WMV9/VC1, HEVC, Containers: AVI, MKV, VP9

Music formats supported: MP3, AAC, WAV, WMA (v2 up to v9.2), WMA-PRO (v9 and v10)

Subtitle formats supported: SRT, SMI, TXT

Picture formats supported: JPG, PNG, BMP, GIF

Audio

Sound output Power: 20 (2x10) W

Speakers: 2.0, Down Firing

Sound Features: DTS-HD, Dolby Atmos Compatible, Dolby MS12D, AC-4, DTS Studio Sound

External speaker out: 1.5W Mono 8 Ohm

Specifications

Power

Mains power: AC 110-240V; 50-60Hz

Ambient temperature: 0°C to 40°C (32°F to 104°F)

Standby power consumption: <0.5 W

Power Saving Features: Eco mode, Auto switch-off timer, Light sensor

Maximum Power Consumption: 170 W

Green Specifications

Energy Star

Accessories

Included: Hygienic RC 22AV2226A, 2x AA batteries, Power Cord, Warranty Leaflet

Optional: DOCSIS Cable Modem 22AV1970A, Setup RC 22AV9574A/12, PPDS VESA table stand

Wireless Connectivity

Wireless LAN: 802.11 ac, Wifi-Direct

Connectivity Bottom

Antenna: F-Type

Digital Audio out: Optical

Ethernet (LAN): RJ-45

HDMI3: HDMI 2.0 with HDCP 2.2

USB2: USB 2.0

External power: 12V, max 1.5A

HDMI4: HDMI 2.0 with HDCP 2.2

External speaker out: Mini-Jack

Connectivity Side

HDMI1: HDMI 2.0 with HDCP 2.2

HDMI2: HDMI 2.0 with HDCP 2.2

Headphone out: Mini-Jack

USB1: USB 3.0

External Control: RJ-12

Connectivity Enhancements

EasyLink (HDMI CEC): One touch play, System Standby, RC pass through, system audio control

HDMI: ARC (all ports), Auto Input Selection

RJ12: SmartPlug Xpress

Design

Colour: Anthracite Grey

Dimensions

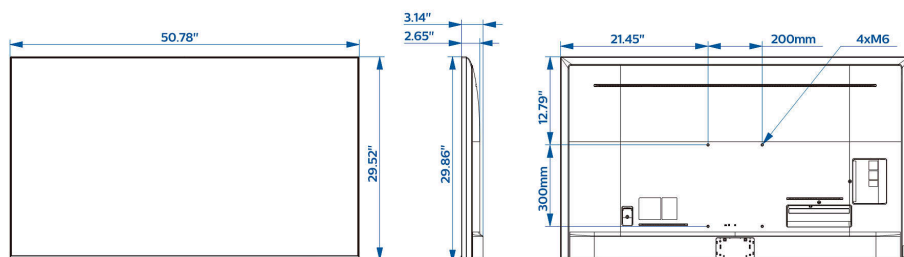
Wall mount compatible: 200 x 300 mm, M6

Set Width (inch): 50.78 inch

Set Height (inch): 29.52 inch

Set Depth (inch): 2.65/3.14 inch

Product weight (lb): 38.3 lb



- * Netflix: specific terms and conditions apply which have to be approved and applied in order to enable the app.
- * Google Cast requires access to Google servers.
- * Availability of Google Assistant is depending on Country and Language settings. To use Google Assistant, a remote control with voice function must be used.
- * Availability of features will depend on implementation chosen by integrator.
- * Philips does not guarantee the availability or continuity of correct functioning of apps.
- * Actual free memory may be less due to device pre-configuration
- * This television contains lead only in certain parts or components where no technology alternatives exist in accordance with existing exemption clauses under the RoHS Directive.
- * Android, Google Play and Chromecast are trademarks of Google LLC