

OLED

Registre su producto y obtenga asistencia en  
[www.philips.com/welcome](http://www.philips.com/welcome)

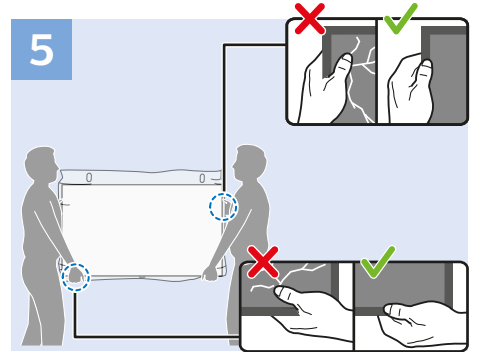
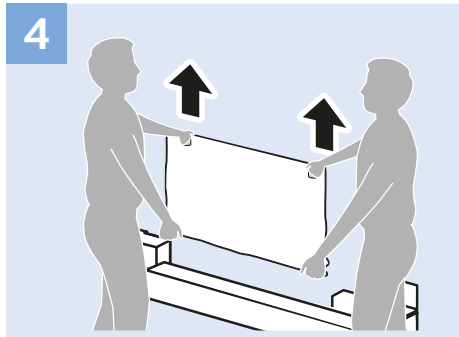
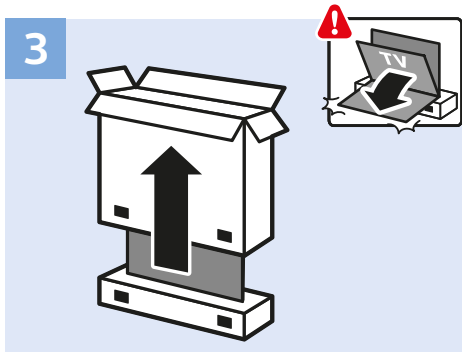
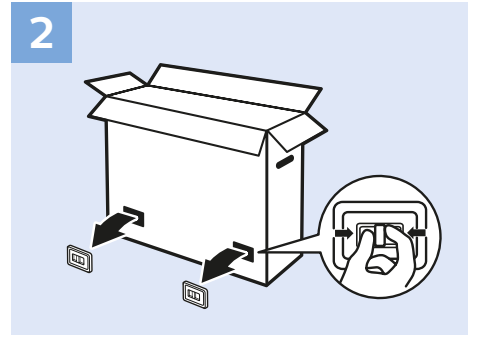
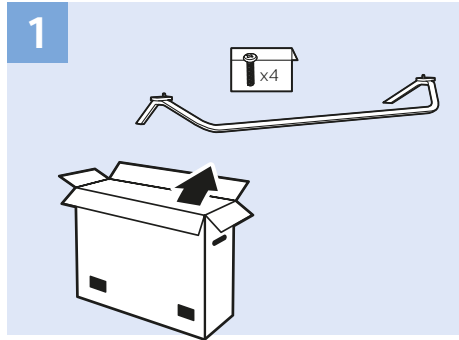
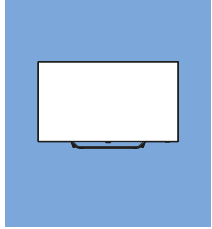
55OLED873/77

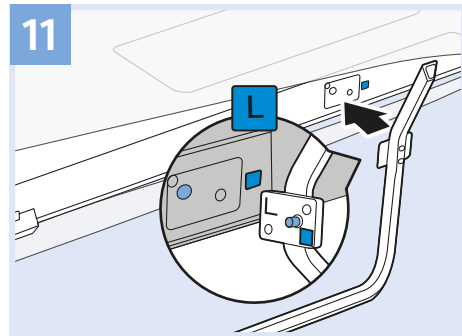
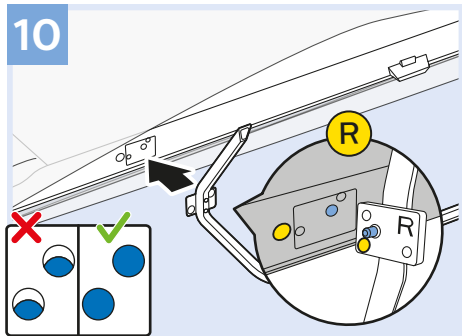
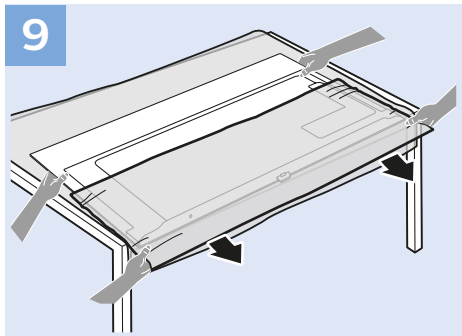
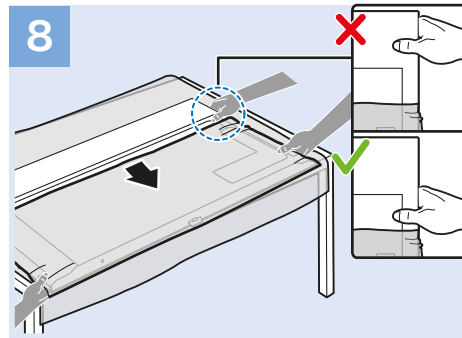
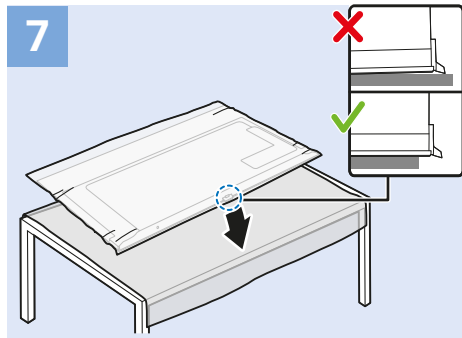
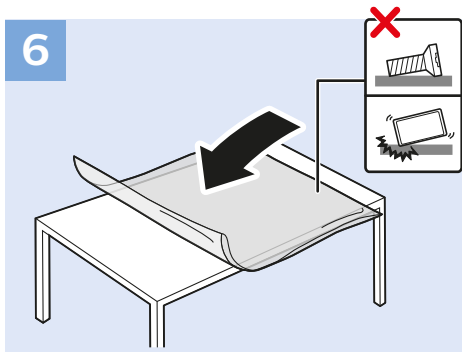
**PHILIPS**

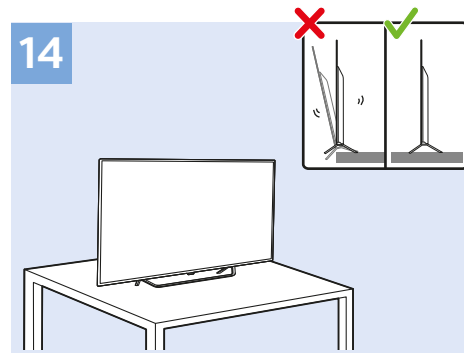
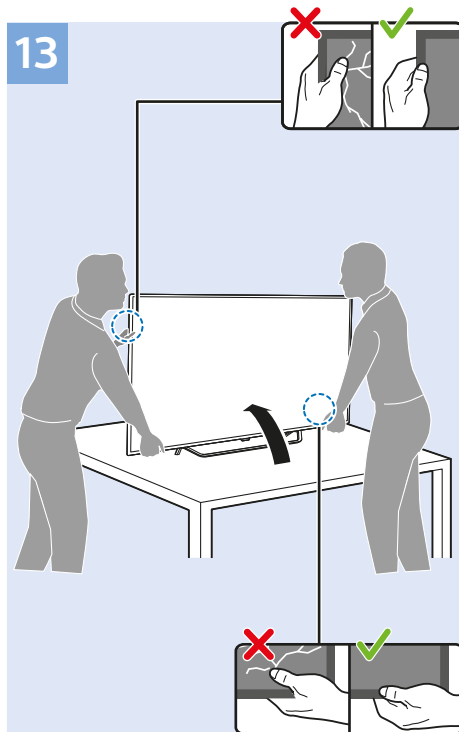
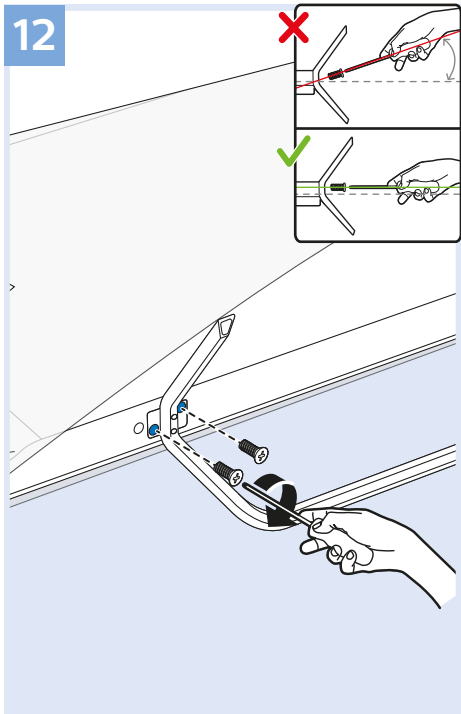


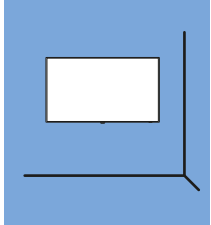
English Read the safety instructions.

Español Lea la información de seguridad.







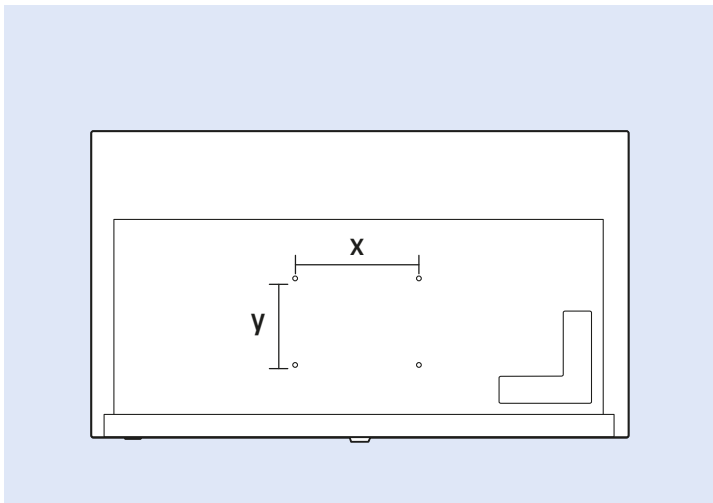


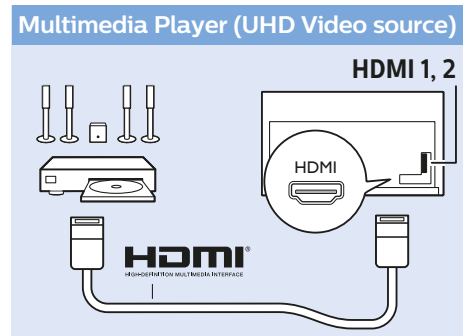
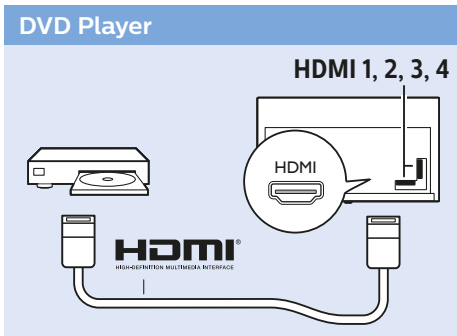
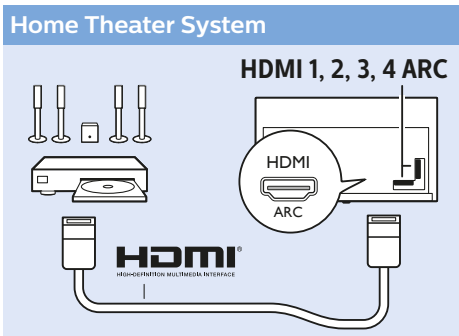
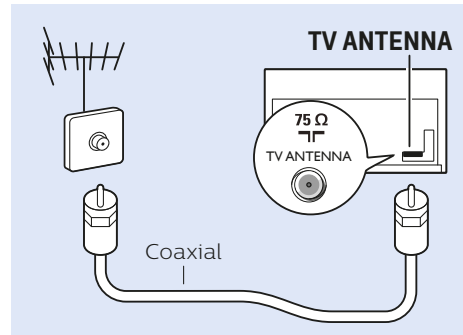
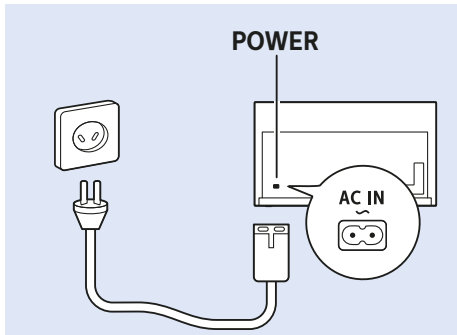
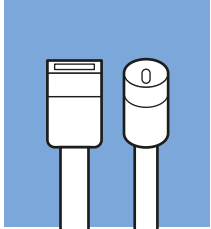
55"

VESA (x, y) 300x300 mm M6

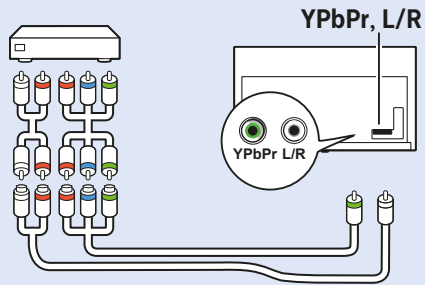


139 cm

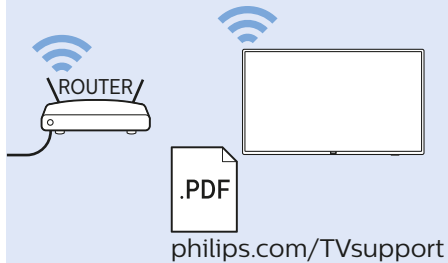




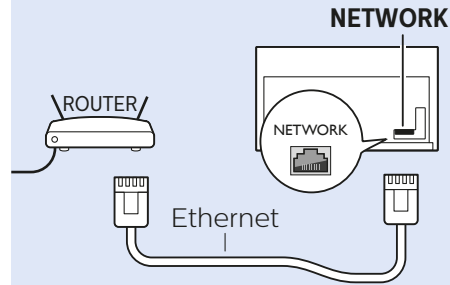
### Video Player - YPbPr, L/R



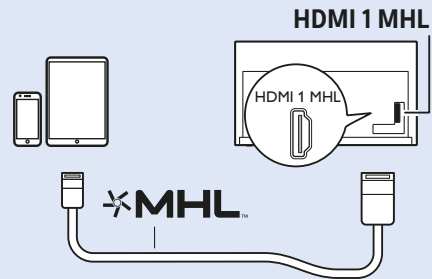
### Network - Wireless



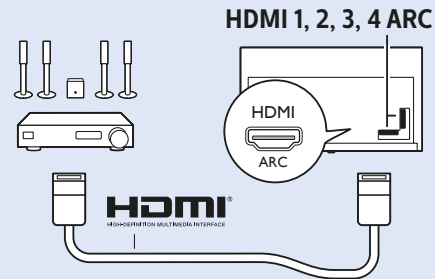
### Network - Wired



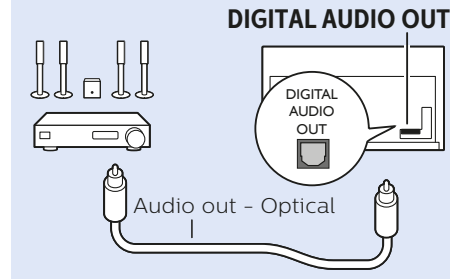
### MHL



### Digital Audio System - HDMI ARC

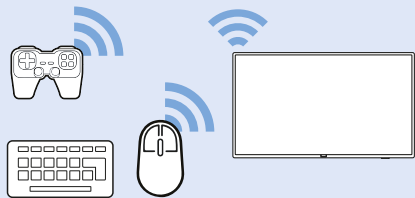


### Digital Audio System - OPTICAL

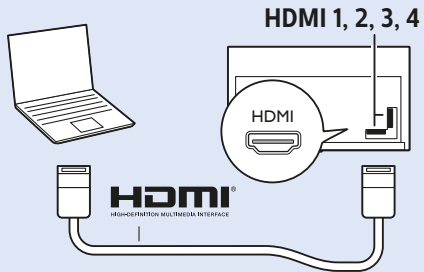




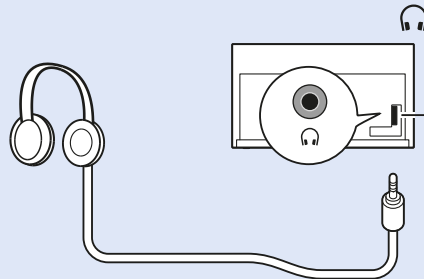
### Bluetooth - Gamepad, Keyboard, Mouse



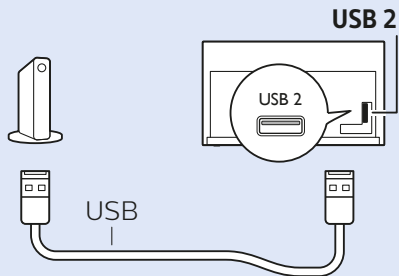
### Computer - HDMI



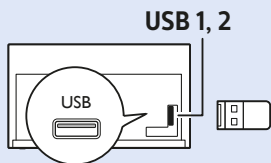
### Headphones

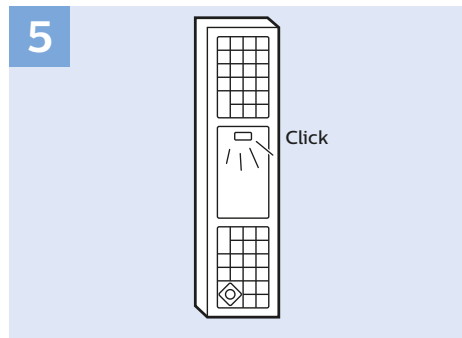
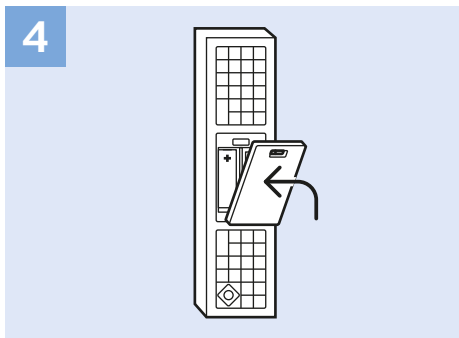
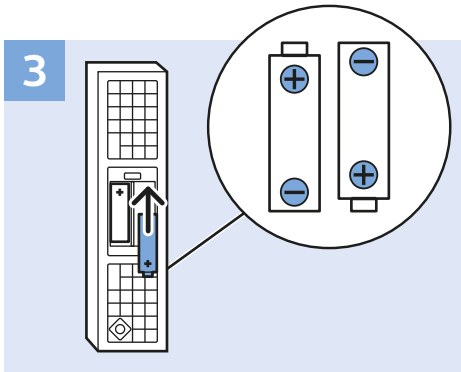
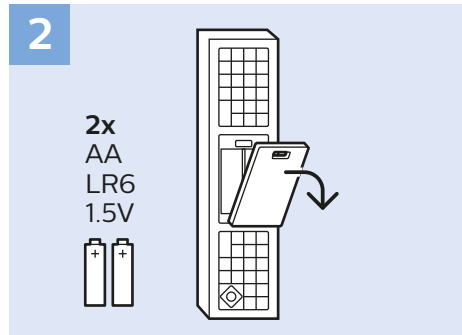
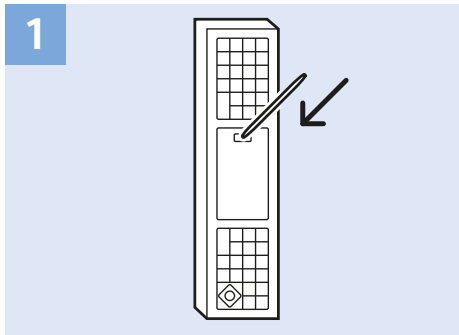
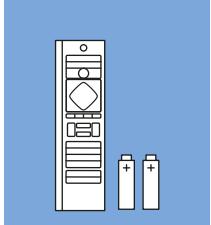


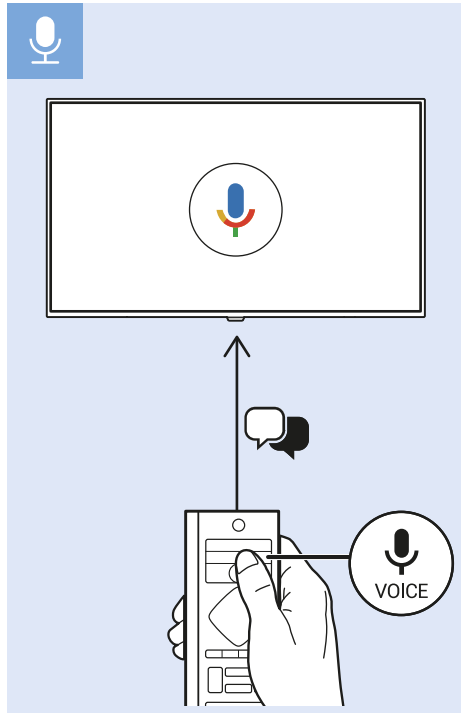
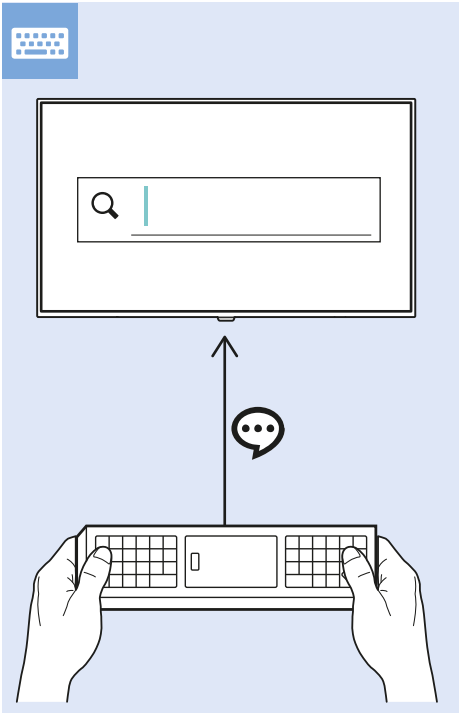
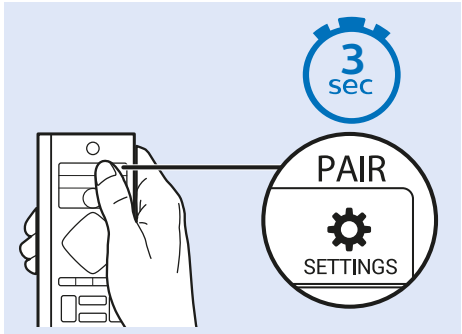
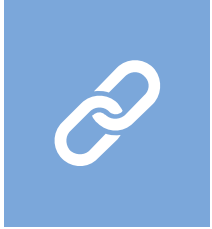
### USB Hard Drive

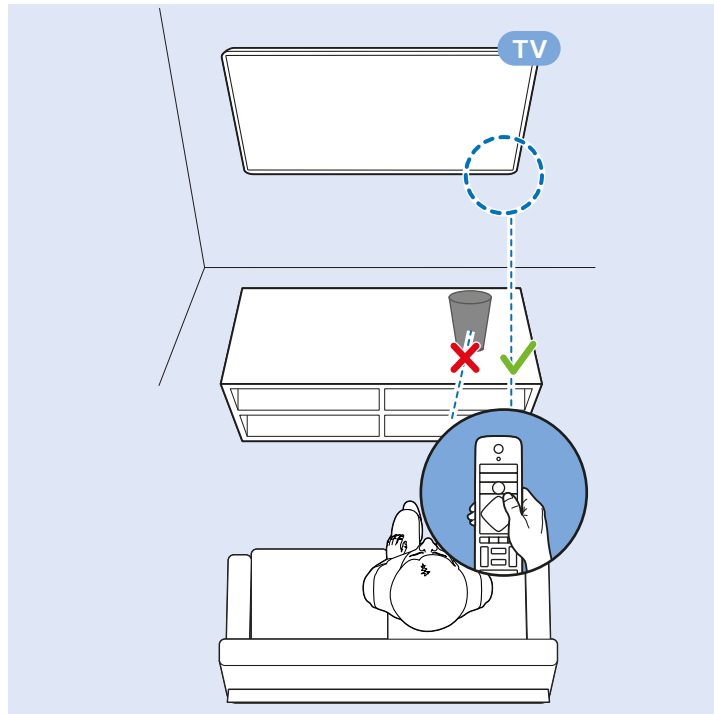
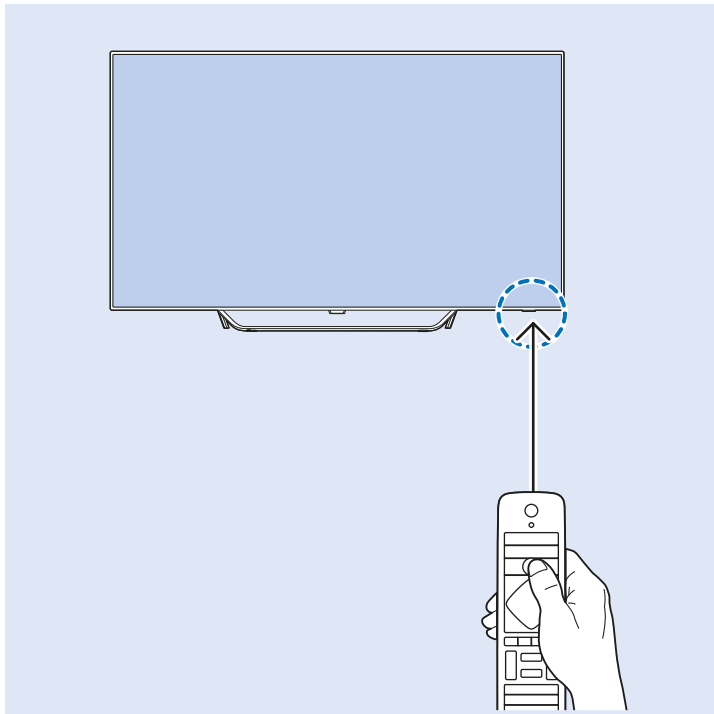


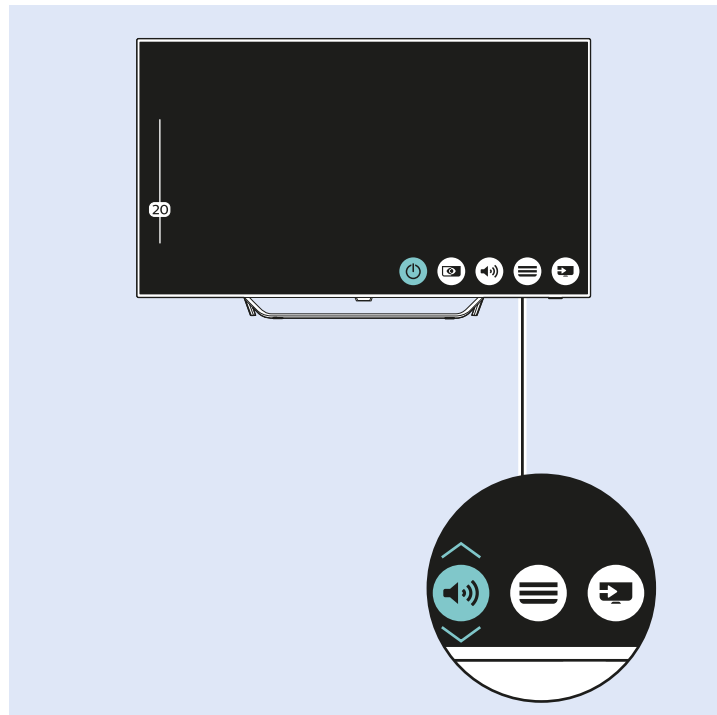
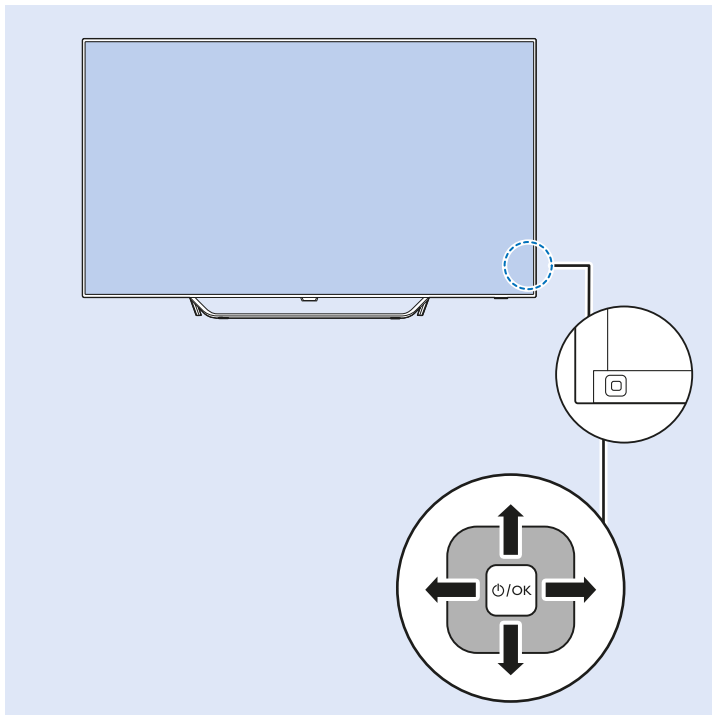
### USB Flash Drive

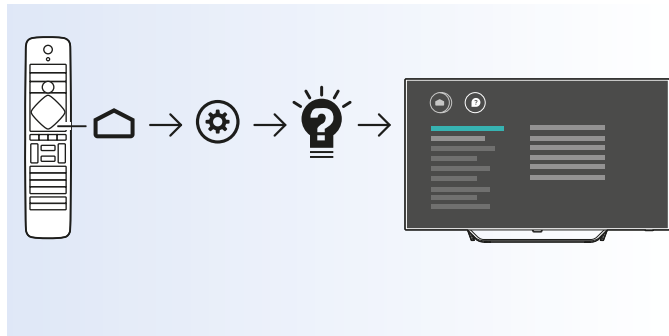
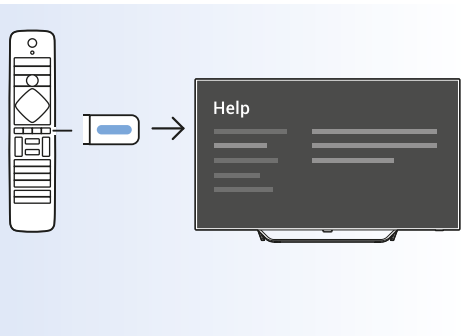












[www.philips.com/TVsupport](http://www.philips.com/TVsupport)





### **English** – Image residual phenomenon in OLED TV

Displaying a still image for a prolonged period of time may result in displaying a temporary residual of an image on the TV screen. Image retention is a normal phenomenon of OLED TV and there is nothing wrong with your TV. Therefore please note this is not subjected to exchange or refund.

Please refrain from displaying a fixed image on the TV screen for a long period of time.

We have designed 2 methods to reduce the chances of residual images on the TV screen.

1. Via screen saver – When the image of the TV is remaining static for more than 2 minutes, the TV runs a screen saver (a Philips logo) automatically. Press any key on your remote control to revert back to previous screen image.
2. Via turning off the TV – When you encounter this residual image on the TV, you can eliminate this phenomenon by switching off TV via the power button on your remote control or on the TV. When you switched off the TV, please leave the TV in standby mode, and wait for the residual image to be completely erased before switching back on your TV.

---

### **Español** – Fenómeno de imagen residual en televisores OLED

La visualización de una imagen fija durante un periodo prolongado puede mostrar una imagen residual temporal en la pantalla del televisor.

La retención de la imagen es un fenómeno normal en los televisores OLED y no le ocurre nada malo al televisor. Por lo tanto, tenga en cuenta que este efecto no da derecho a cambios o reembolsos.

Evite visualizar una imagen fija en la pantalla del televisor durante un periodo prolongado.

Hemos diseñado dos métodos para reducir la posibilidad de que se produzcan imágenes residuales en la pantalla del televisor.

1. Mediante el protector de pantalla: cuando la imagen del televisor permanece estática durante más de dos minutos, se activa el protector de pantalla (logotipo de Philips) automáticamente. Pulse cualquier botón del mando a distancia para volver a la imagen anterior de la pantalla.
2. Mediante la desactivación del televisor: si encuentra una imagen residual en el televisor, puede eliminar este fenómeno apagando el televisor con el botón de encendido del mando a distancia o del televisor. Cuando apague el televisor, déjelo en modo de espera y espere a que la imagen residual se borre por completo antes de volver a encenderlo.



All registered and unregistered trademarks are property of their respective owners.  
Specifications are subject to change without notice.  
Philips and the Philips' shield emblem are trademarks of Koninklijke Philips N.V.  
and are used under license from Koninklijke Philips N.V.  
2018 © TP Vision Europe B.V. All rights reserved.

[philips.com](https://www.philips.com)