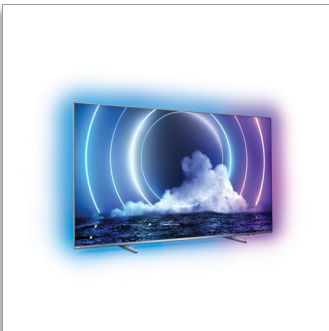




Philips LED
4K UHD MiniLED Android
TV

P5 AI perfect picture engine

Dolby Atmos sound
4-sided Ambilight TV
189 cm (75") Android TV



75PML9506

Big on feeling. Big on detail.

4K UHD MiniLED Android TV

Deep blacks. Vibrant colors. From gaming to movies, feel more with this Philips MiniLED TV. You get a picture so lifelike you'll want to reach out and touch it. All made even bigger and more immersive with the magic of 4-sided Ambilight

Big. Bright. Beautiful.

- Big-screen brilliance. Mini LED TV.
- All-round immersion. 4-sided Ambilight.
- Premium-quality materials. From stand to remote.
- Metal stand height adjusts to accommodate a soundbar.

Smooth motion. True color. Incredible depth.

- Whatever you watch, a picture so real. P5 engine with AI.
- Vibrant HDR picture. Philips 4K UHD TV.
- Cinematic vision and sound. Dolby Vision and Dolby Atmos
- Well-balanced audio. Crisp, clear dialogue. Punchy effects.
- Great for gaming. Ultra-low latency on any console

Content at your command.

- Simply smart. Android TV.
- Multi-room audio. DTS Play-Fi
- Voice control. The Google Assistant. Works with Alexa.

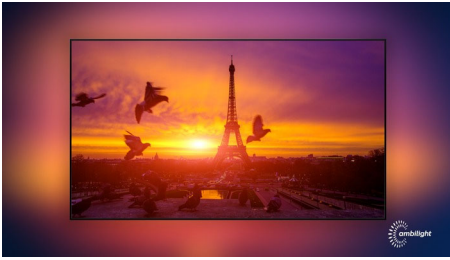
PHILIPS

4K UHD MiniLED Android TV
P5 AI perfect picture engine Dolby Atmos sound, 4-sided Ambilight TV, 189 cm (75") Android TV

75PML9506/12

Highlights

4-sided Ambilight



With Philips 4-sided Ambilight, every moment feels closer. Intelligent LEDs around the edge of the TV respond to the on-screen action and emit an immersive glow that's simply captivating. Experience it once and wonder how you enjoyed TV without it.

HDMI 2.1 VRR and low latency



Your Philips TV boasts the latest HDMI 2.1 connectivity and automatically switches to an ultra-low-latency setting when you start playing a game on your console. VRR and Freesync are supported for smooth fast-action gameplay. Ambilight's gaming mode brings the thrill right into the room.

Mini LED TV



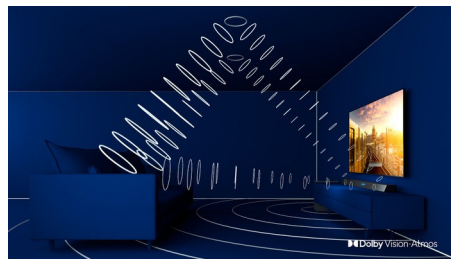
Your Philips Mini LED TV supports all major HDR formats and gives you a truly impressive big-screen picture with deep blacks and lifelike colors. Over a thousand intelligent backlight zones are independently dimmed or

brightened to enable pin-sharp contrast and real depth.

P5 engine with AI

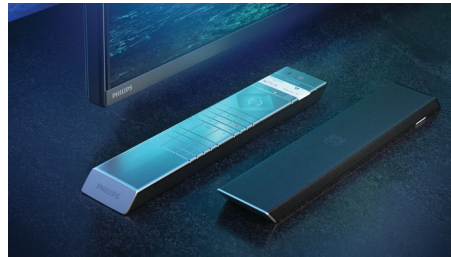
Philips P5 processor with AI delivers a picture so real it feels like you could step right into it. A deep-learning AI algorithm processes images in a manner similar to the human brain. No matter what you're watching, you get lifelike detail and contrast, rich color, and smooth motion.

Dolby Vision + Dolby Atmos



Support for Dolby's premium sound and video formats means the HDR content you watch will look-and sound-glorious. You'll enjoy a picture that reflects the director's original intentions and experience spacious sound with real clarity and depth.

Premium materials



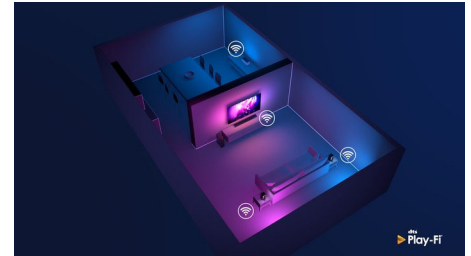
This TV boasts premium materials wherever you look. The polished metal edges of the feet contrast beautifully with the brushed metal bezel. While the soft, textured leather-backed remote is as easy to hold as it is to look at.

Simply smart. Android TV



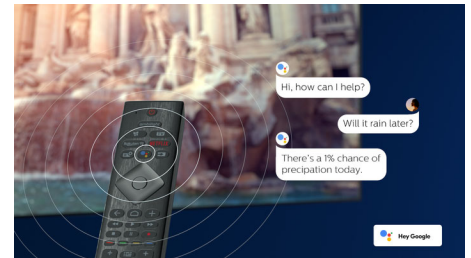
Your Philips Android TV gives you the content you want-when you want it. You can customize the home screen to display your favorite apps, making it simple to start streaming the movies and shows you love. Or pick up where you left off.

DTS Play-Fi compatible



With DTS Play-Fi on your Philips TV you can connect to compatible speakers in any room. Got wireless speakers in the kitchen? Listen to the movie while you make a snack or keep up with the sports commentary while you get everyone drinks.

AI voice control



Push a button on the remote to talk to the Google Assistant. Control the TV or Google Assistant-compatible smart home devices with your voice. Or ask Alexa to control the TV via Alexa-enabled devices.



Specifications

Ambilight

- Ambilight Version: 4-sided
- Ambilight Features: Built in Ambilight+hue, Ambilight Music, Game Mode, Wall colour adaptive, Lounge mode, AmbiWakeup, AmbiSleep, Philips Wireless Home Speakers

Picture/Display

- Diagonal screen size: 75 inch / 189 cm
- Display: 4K Ultra HD LED
- Panel resolution: 3840x2160
- Aspect ratio: 16:9
- Picture engine: P5 AI Perfect Picture Engine
- Picture enhancement: Ultra Resolution, Dolby Vision, HDR10+, CalMAN Ready, ISF Color Management, Perfect Natural Motion, Wide Color Gamut 95% DCI/P3, Micro Dimming Premium

Supported Display Resolution

- Computer inputs on HDMI1/2: HDMI2.1 supported., HDR supported, HDR10+/HLG
- Computer inputs on HDMI3/4: HDMI2.0 supported.
- Video inputs on HDMI1/2: HDMI2.1 supported, HDR supported, HDR10+/HLG
- Video inputs on HDMI3/4: HDMI2.0 supported.

Android TV

- OS: Android TV™ 10 (Q)
- Pre-installed apps: Google Play Movies*, Google Play Music*, Google Search, YouTube, Amazon instant video, BBC iplayer, Netflix, Amazon Prime Video, Disney+, Fitness App, Spotify
- Memory size(Flash): 16GB*

Processing

- Processing Power: Quad Core

Tuner/Reception/Transmission

- HEVC support
- Digital TV: DVB-T/T2/T2-HD/C/S/S2
- MPEG Support: MPEG2, MPEG4
- Video Playback: PAL, SECAM
- TV Program guide*: 8 day Electronic Program Guide
- Signal strength indication
- Teletext: 1000 page Hypertext

Connectivity

- Number of HDMI connections: 4

- Number of USBs: 3
- Wireless connection: Wi-Fi 802.11ac, 2x2, Dual band, Bluetooth 5.0
- Other connections: Common Interface Plus (CI+), Digital audio out (optical), Satellite Connector, Ethernet-LAN RJ-45, Headphone out, Service connector
- HDMI features: 4K, Audio Return Channel
- EasyLink (HDMI-CEC): Remote control pass-through, System audio control, System standby, One touch play
- HDCP 2.3: Yes on all HDMI
- HDMI ARC: Yes for all ports
- HDMI eARC: Yes on HDMI2
- HDMI VRR: FreeSync Premium, Yes on all HDMI ports

Multimedia Applications

- Video Playback Formats: Containers: AVI, MKV, H264/MPEG-4 AVC, MPEG-1, MPEG-2, MPEG-4, HEVC (H.265), VP9, AV1
- Subtitles Formats Support: .SRT, .SUB, .TXT, .SMI
- Music Playback Formats: AAC, MP3, WAV, WMA (v2 up to v9.2), WMA-PRO (v9 and v10)
- Picture Playback Formats: JPEG, BMP, GIF, PNG, 360 photo, HEIF

EU Energy card

- Diagonal screen size (inch): 75
- Diagonal screen size (metric): 189
- Energy class for SDR: E
- Energy class for HDR: G
- Networked standby mode: <2.0 W
- Off mode power consumption: n.a.
- Panel technology used: LED LCD
- EPREL registration numbers: 685565
- On mode power demand for HDR: 156 Kwh/1000h
- On mode power demand for SDR: 102 Kwh/1000h

Sound

- Audio: Output power : 50 Watt (RMS), 2.1 Channel
- Codec: DTS-HD(M6), Dolby Atmos, Dolby Digital MS12 V2.5
- Sound Enhancement: A.I. Sound, Clear Dialogue, Dolby Bass Enhancement, Dolby Volume Leveler, Night mode, Dolby Atmos, A.I. EQ, DTS Play-Fi, Mimi Sound Personalization
- Speaker configuration: 10Wx2 mid-high speaker,

30W sub-woofer

Dimensions

- Box dimensions (W x H x D): 1879.0 x 1106.0 x 190.0 mm
- Product weight: 37.3 kg
- Product weight (+stand): 38.2 kg
- Set dimensions (W x H x D): 1671.0 x 955.7 x 79.6 mm
- Set dimensions with stand (W x H x D): 1671.0 x 985.8/ 1025.8 x 350.1 mm
- Stand dimensions (W x H x D): 807.5/ 1448.3 x 30.0/ 70.0 x 350.1 mm
- Weight incl. Packaging: 47.4 kg
- Wall mount compatible: 600 x 300 mm

Accessories

- Included accessories: Legal and safety brochure, Power cord, Quick start guide, Remote Control, Table top stand
- Included batteries: 2 x AAA Batteries

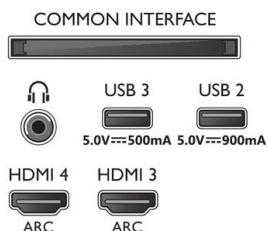
Design

- Colors of TV: Mid silver metal bezel
- Stand design: Metal wedge sticks

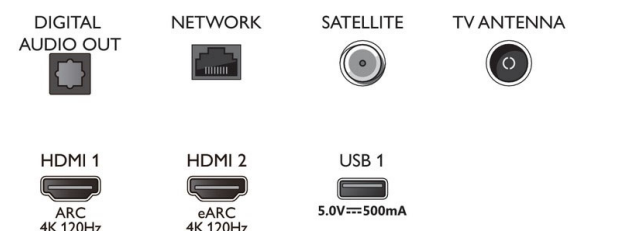


Connections

Side



Bottom



Issue date 2022-10-25

Version: 10.6.1

12 NC: 8670 001 74968
EAN: 87 18863 02887 2

© 2022 Koninklijke Philips N.V.
All Rights reserved.

Specifications are subject to change without notice.
Trademarks are the property of Koninklijke Philips N.V. or their respective owners.

www.philips.com

* EPG and actual visibility (up to 8 days) is country and operator dependent.
* Android App offerings vary per country. For more details please visit your local Google Play Store.
* The TV supports DVB reception for 'Free to air' broadcast. Specific DVB operators may not be supported. An up to date list can be found in the FAQ section of the Philips support website. For some operators Conditional Access and subscription are required. Contact your operator for more information.
* Philips TV Remote app and related functionalities vary per TV model, operator, and country, as well as smart device model and OS. For more details please visit: www.philips.com/TVRemoteapp.
* USB recording for digital channels only, recordings may be limited by broadcast copy protection (CI+). Country and channel restrictions may apply.
* This television contains lead only in certain parts or components where no technology alternatives exist in accordance with existing exemption clauses under the RoHS Directive.
* Memory size (Flash) : 16G, the actual available disc space may differ (dependent on e.g. (pre-)installed apps, installed operating system, etc.)
* Google Assistant is available on Philips Android TVs running on Android O (8) or higher OS version. Google Assistant is available in selected languages and countries.
* Amazon Prime is available in selected languages and countries.
* Amazon, Alexa and all related logos are trademarks of Amazon.com, Inc. or its affiliates. Amazon Alexa is available in selected languages and countries.
* Netflix subscription required. Subject to terms at <https://www.netflix.com>
* Disney+ subscription required. Subject to terms at <https://www.disneyplus.com> (c) 2020 Disney and its related entities. Disney+ is available in selected languages and countries.
* Rakuten TV is available in selected languages and countries.