

# PHILIPS

Type A adapter rings

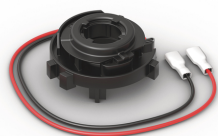
Accessories for LED upgrade

Type A

For LED [~H7]\*

Reliable Philips quality

LUM11184X2



## Precise fit and easy installation

### Smooth installation of HL [~H7]

Ensure smooth installation of Philips LED HL [~H7]\* with Philips adapter rings that fit a large selection of car models. Find the right adapter ring type for your car model in our compatibility list\*\* and enjoy great light performance.

#### Optimal fit

- Easy to install

#### Compatible with major car models

- Find the right LED adapter ring

#### Reliable Philips quality

- Durable material for long-lasting performance

# Highlights

## Compatible with most vehicles

Philips HL [-H7] LED headlighting bulbs are compatible with a wide range of vehicles. To find out if you need additional adapter rings to upgrade to LED, check our Philips compatibility list\*\*. Please review it regularly for your vehicle, as we update our list continuously.

## Long-lasting performance

Philips LED adapter rings are made of durable metal and can withstand physical and thermal stress. They have been tested in the toughest conditions so you can enjoy their long-lasting performance.

## Model-specific adapter rings

When upgrading to LED headlighting, you may need adapter rings compatible with your car model to securely install the LED bulb inside the headlamp. Philips LED adapter rings are easy to install and are compatible with a wide range of vehicle. Find the user manual on the Philips support page\*\*\*.

# Specifications

## Marketing specifications

**Expected benefits:** Easy to install

**Product highlight:** Adapter ring for H7-LED

## Ordering information

**Order entry:** 11184X2

**Ordering code:** 02009331

## Outerpack information

**Gross weight per piece:** 420 g

**Height:** 10.3 cm

**Length:** 29.8 cm

**Width:** 12.8 cm

## Packaging Data

**EAN1:** 8719018020093

**EAN3:** 8719018020109

**Packaging type:** X2

## Packed product information

**Gross weight per piece:** 58 g

**Height:** 9.7 cm

**Length:** 9.7 cm

**Width:** 6,3 cm

**MOQ (for professionals):** 6

**Net weight per piece:** 5.5 g

**Pack Quantity:** 2

## Product description

**Application:** Low beam

**Designation:** Adapter rings type A 11184 X2

**Homologation ECE:** NO

**Range:** LED Adapter rings

**Technology:** LED

**Type:** Type A

**Compatible with:** Compatible with all Philips LED upgrades

