

# PHILIPS



## EcoPro50

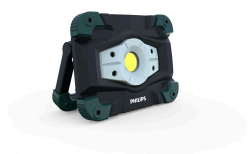
### EcoPro

Aluminium portable projector

1000 lumen / 10 W

Shock and water resistant

battery life: 3 h (6 h eco mode)



RC520C1

## Bright white light to get the job done

### Portable aluminium rechargeable projector light

Small but powerful, versatile yet robust, Philips EcoPro50 rechargeable LED work light provides the bright white light you need to illuminate large dark areas. Enjoy up to 6 hours of continuous use before needing to charge the battery.

#### **Rechargeable battery with battery life indicator**

- Indicator shows you how long the battery will last
- Rechargeable battery lasts up to 6 hours per charge

#### **Versatile and easy to use**

- Magnetic mounting accessory for hands-free lighting
- Recharge other devices with a useful USB port
- Rotating handle lets you position light for hands-free use

#### **Sturdy lamp for daily use**

- Shock resistance proven in drop tests
- Water resistant against splashes

#### **Powerful bright white light**

- Powerful white light (1000 lumen / 10 W) lights up large area

# Highlights

## Powerful light while you work

Whether you need to light up a work site, temporarily replace a wall lamp or illuminate outdoor activities, the Philips EcoPro50 is perfect for lighting up large dark areas. Delivering 1000 lumen (10 W), its consistently bright light gives off a super wide beam. If you need less light and more battery life, you can switch to a 500 lumen (5 W) eco mode.

## Shock resistant

As you may use Philips EcoPro50 for various indoor and outdoor activities, we've made sure the lamp is built to last. Tested in 1.5 metre drop tests, the device is proven to survive occasional drops during use.

## Water resistant

As you may use Philips EcoPro50 for various indoor or outdoor activities, the lamp is designed to survive in tough conditions. Resistant to water, the device will continue to work when splashed, such as during light rain.

## Versatile rotating handle

Sometimes you need hands-free lighting so you can focus on your task. The 180° rotating handle on the back of EcoPro50 gives you freedom to position the projector as needed. You can also

use the handle as a hook to hang the light, or as a support to stand it up by itself. This versatility allows you direct the light just where you need it.

## Useful USB charging port

Philips EcoPro50 can also be used as a power bank to charge other devices, such as your phone. Simply plug your device into the USB port on the back of the lamp and it will begin charging.

## Magnetic mounting accessory

Philips EcoPro50 also comes with a magnetic mounting accessory. Simply attach it to the handle to be able to mount your projector onto any metal surface. Perfect for use in a garage or other work site.

## Up to 6 hours of battery life

Once fully charged, your Philips EcoPro50 delivers bright white light (1000 lumen / 10 W) for up to 3 hours. If you need longer battery life, simply switch to eco mode (500 lumen / 5 W) and enjoy 6 hours of continuous light.

## Battery life indicator

Never worry about your light dying just when you need it the most. On the back of Philips EcoPro50 you will find a battery life indicator, which tells you exactly how long you've got before you'll need to recharge the battery.

# Specifications

## Marketing specifications

**Expected benefits:** See better, Work better

**Product highlight:** Rechargeable work lamp

## Product description

**Impact protection rating (IK):** IK08

**Ingress protection rating (IP):** IP54

**Magnet**

**Materials and finishing:** Aluminium, PC for lens, PTU

**Number of LEDs:** 1

**Operating Temperature:** 0°C to 40°C

**Orientable light:** 180° pivoting handle

**Range:** RCH, EcoPro

**Resistant to:** grease, oil, workshop solvents

**Technology:** LED

**UV leak detector:** No

## Light characteristics

**Colour temperature:** 6500 K

**Light intensity (boost):** 1680 lux at 0.5 m

**Light intensity (eco):** 820 lux at 0.5 m

**LED lifetime:** Up to 30,000 hours

**Beam angle:** 110°

**Light output:** 1000 lumens

**Light output (eco):** 500 lumens

## Electrical characteristics

**Wattage:** 10 W

**Voltage:** 3.7 V

**Battery capacity:** 4400 mAh

**Battery run time (boost):** Up to 3 hours

**Battery run time (eco):** Up to 6 hours

**Battery type:** Li-ion battery

**Plug type:** Micro USB

**Charging cable type:** Rechargeable

**Battery charging time:** around 5 hours

**Power Source:** Li-ion 18650 x2

## Ordering information

**Order entry:** RC520C1

**Ordering code:** 05071745

## Packaging Data

**EAN1:** 8719018050717

**EAN3:** 8719018050724

## Packed product information

**Length:** 28 cm

**Width:** 15.1 cm

**Height:** 5.6 cm

**Pack Quantity / MOQ:** 1

**Weight with batteries:** 1212.5 g

**Size:** Standard

**Cable length:** 100 cm

## Outer pack information

**Length:** 57.5 cm

**Width:** 18 cm

**Height:** 17 cm

**Gross weight per piece:** 7.865 g

