

Register your product and get support at
www.philips.com/welcome

Philips LED Penlight Premium



English LED Inspection lamp
 Dansk LED inspektionslampe
 Deutsch LED-Inspektionslampe
 Dutch LED-inspectielamp
 Français Lampe baladeuse à LED
 Italiano Lampada di ispezione a LED
 Norsk LED-inspektjonslampe
 Polski Lampa inspekcyjna LED
 Português Lâmpada de inspeção LED
 Español Lámpara de inspección LED
 Suomi LED-tarkastuslamppu
 Svenska Inspektionslampa med LED
 Русский Светодиодный инспекционный фонарь

Specifications are subject to change without notice.
©2012 Koninklijke Philips Electronics N.V.
All rights reserved.

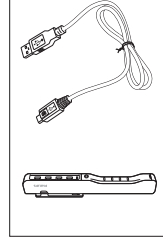
Printed in China JULY 2012



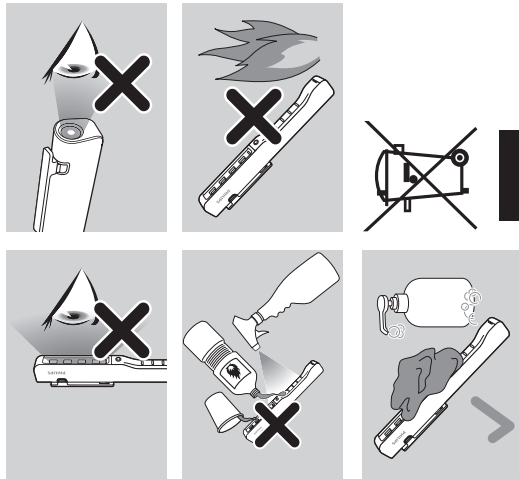
www.philips.com/support

Europe +800 74 45 47 75
 North America +1 800 257 6054
 Argentina +54 11 4546 7777
 Brazil +80 0 979 1925
 Central America, Ecuador, Venezuela +57 1 307 8040
 Chile +56 2 730 2000
 Colombia +57 1 307 8040 / 01 800 011 4586
 Perú +51 1 610 6200
 China +86 21 59155104
 Korea +82 2 709 1200

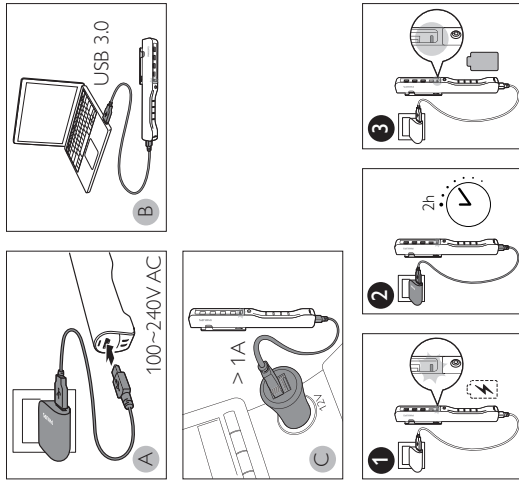
www.philips.com/automotive



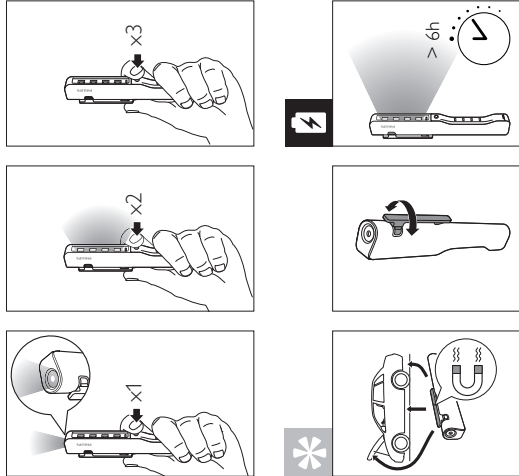
3 **A** i



4



5



6



Description	
Operating line voltage	100~240V / Output 12V 1A
Charging time	2 hours
Battery type	2xAAA, LFP
Battery performance	up to 6 hours
Light intensity (at 0.5 m)	Focus beam 3 600 lux Wide beam 250 lux
Light output (lux)	Focus beam 90 lm Wide beam 120 lm
Impact protection rating	IK07
Ingress protection rating	IP54
Operating temperature	-10 °C to 50 °C / -14 °F to 122 °F (US)
Adaptor operating temperature	0 °C to 40 °C / 32 °F to 104 °F (US)
Storage temperature	-20 °C to 60 °C / -4 °F to 140 °F (US)
Lamp dimensions	183 x 21 mm / 7.2 x 0.8 inches (US)
Product weight	90 g / 0.19 lb (US)
Magnet	rotating
Connection	USB 3.0