

# PHILIPS

## EcoPro50

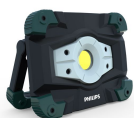
### EcoPro

Aluminum portable projector

1000 lumen / 10 W

Shock and water resistant

battery life: 3h (6h eco mode)



RC520C1



## Bright white light to get the job done

### Portable aluminum rechargeable projector light

Small but powerful, versatile yet robust, Philips EcoPro50 rechargeable LED work light provides the bright white light you need to illuminate large dark areas. Enjoy up to 6 hours of continuous use before needing to charge the battery.

#### **Powerful bright white light**

- Powerful white light (1000 lumen / 10W) lights up large area

#### **Sturdy lamp for daily use**

- Shock resistance proven in drop tests
- Water resistant against splashes

#### **Versatile and easy to use**

- Magnetic mounting accessory for hands-free lighting
- Recharge other devices with a useful USB port
- Rotating handle lets you position light for hands-free use

#### **Rechargeable battery with battery life indicator**

- Indicator shows you how long the battery will last
- Rechargeable battery lasts up to 6 hours per charge

# Highlights

## Powerful light while you work

Whether you need to light up a work site, temporarily replace a wall lamp, or illuminate outdoor activities, the Philips EcoPro50 is perfect for lighting up large dark areas. Delivering 1000 lumen (10W), its consistently bright light gives off a super wide beam. If you need less light and more battery life, you can switch to a 500 lumen (5W) eco mode.

## Shock resistant

As you may use Philips EcoPro50 for various indoor and outdoor activities, we've made sure the lamp is built to last. Tested in 1.5 meter drop tests, the device is proven to survive occasional drops during use.

## Water resistant

As you may use Philips EcoPro50 for various indoor or outdoor activities, the lamp is designed to survive in tough conditions. Resistant to water, the device will continue to work when splashed, such as during light rain.

## Versatile rotating handle

Sometimes you need hands-free lighting so you can focus on your task. The 180° rotating handle on the back of EcoPro50 gives you freedom to position the projector as needed. You can also use the handle as a hook to hang

the light, or as a support to stand it up by itself. This versatility allows you direct the light just where you need it.

## Useful USB charging port

Philips EcoPro50 can be also used as a power bank to charge other devices, such as your phone. Simply plug your device into the USB port on the back of the lamp and it will begin charging.

## Magnetic mounting accessory

Philips EcoPro50 also comes with a magnetic mounting accessory. Simply attach it to the handle to be able to mount your projector onto any metal surface. Perfect for use in a garage or other work site.

## Up to 6 hours of battery life

Once fully charged, your Philips EcoPro50 delivers bright white light (1000 lumen / 10 W) for up to 3 hours. If you need longer battery life, simply switch to eco mode (500 lumen / 5 W) and enjoy 6 hours of continuous light.

## Battery life indicator

Never worry about your light dying just when you need it the most. On the back of Philips EcoPro50 you will find a battery life indicator, which tells you exactly how long you've got before you'll need to recharge the battery.

# Specifications

## Ordering information

Order entry: RC520C1

Ordering code: 05071745

## Electrical characteristics

Battery capacity: 4400 mAh

Wattage: 10 W

Battery run time (boost): Up to 3 hours

Voltage: 3.7 V

Battery run time (eco): Up to 6 hours

Battery type: Li-ion battery

Charging cable type: Rechargeable

Plug type: Micro USB

Battery charging time: around 5 hours

Power Source: Li-ion 18650 x2

## Light characteristics

Color temperature: 6500 K

Light intensity (boost): 1680 lux at 0.5m

Light intensity (eco): 820 lux at 0.5m

LED lifetime: Up to 30000 hours

Beam angle: 110°

Light output (eco): 500 lumens

Light output: 1000 lumens

## Outerpack information

Gross weight per piece: 7.865 g

Height: 17 cm

Length: 57.5 cm

Width: 18 cm

## Packaging Data

EAN1: 8719018050717

EAN3: 8719018050724

## Packed product information

Height: 5.6 cm

Length: 28 cm

Pack Quantity / MOQ: 1

Weight with batteries: 1212.5 g

Width: 15.1 cm

Size: Standard

Cable length: 100 cm

## Product description

Impact protection rating (IK): IK08

Ingress protection rating (IP): IP54

Magnet

Materials & finishing: Aluminum, PC for lens, PTU

Orientable light: 180° pivoting handle

Resistant to: grease, oil, workshop solvents

Technology: LED

Range: RCH

UV leak detector: No

Operating Temperature: 0°C to 40°C

Number of LEDs: 1

## Marketing specifications

Product highlight: Rechargeable work lamp

Expected benefits: See better, Work better

