

Technical specifications

Description	EU
Operating line voltage	100–240V
Power consumption	2.4 W
Number of LED	1 strip LED
Light output	200 lumens
Beam angle	70°
Color temperature	6000 K
Impact protection rating	IK07
Ingress protection rating	IP65
Operating temperature	-10°C to 40°C
Storage temperature	-20°C to 60°C
Lamp dimensions	190 x 63 x 38 mm
Product weight (with docking station)	360 g
Product weight (without docking station)	210 g
360° hook	360° adjustable magnetic hook
Battery runtime	3 hours
Charging time	4 hours
Plug	European plug

LED Range overview



©2013 Koninklijke Philips Electronics N.V.
all rights reserved
www.philips.com/automotive

LED Inspection lamp

Rechargeable with docking station - RCH20

3211 008 20201



www.philips.com/support

EN	LED inspection lamp with docking station
DE	LED-Inspektionslampe mit Dockingstation
FR	Lampe baladeuse à LED avec chargeur
NL	LED-inspectielamp met oplader
ES	Lámpara de inspección LED con estación de recarga
IT	Lampada di ispezione a LED
PT	Lâmpada de inspeção LED com carregador
RU	Светодиодный инспекционный фонарь
PL	Lampa inspekcyjna LED ze stacją dokującą
SV	Inspektionslampa med LED med laddningsstation
NO	LED-inspeksjonslampe med koplingsstasjon
DA	LED inspektionslampe med opladningsstation
SU	LED-tarkastuslamppu latausalustan kanssa
AR	LED المصباح أو مصباح

English

Before you start

Thank you for buying the Philips LED Inspection lamp. Its high-quality LED lighting offers a powerful wide-angle light output that will let you work in your workshop, garage or any other professional environment under the best lighting conditions.



The Philips LED Inspection lamp bears the official Philips Original Quality Equipment seal. It is your assurance that it is manufactured or licensed by Philips using the highest-quality components and materials. Philips, #1 in automotive lighting worldwide, brings you the professional lighting tool you need. It combines Philips Original Quality, durability, and simple-to-use design.

⚠ Important

Please read this user guide carefully before using your LED inspection lamp. This guide contains important health and safety information.

If you need further assistance, please dial the Philips Lighting consumer care **toll-free number** in your region

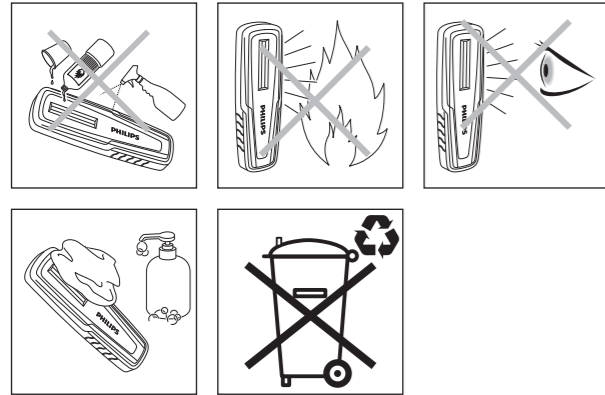
Europe +800 7445 47 75

Or visit your local Philips Dealer

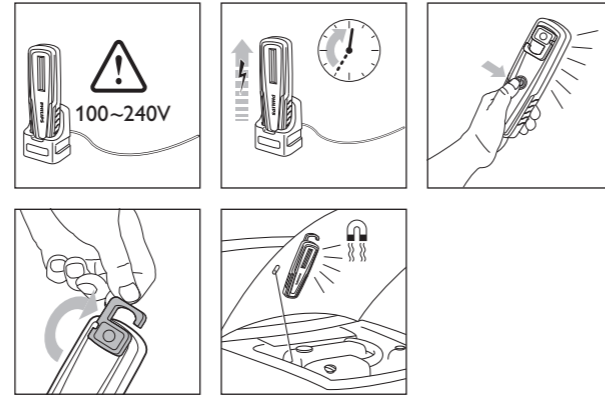
For more information visit
www.philips.com

PHILIPS

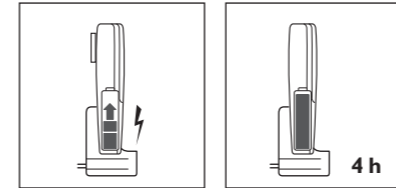
EN Important health and safety information
 DE Wichtige Sicherheitshinweise
 FR Instructions de sécurité
 NL Belangrijke veiligheidsinformatie
 ES Importante: información de seguridad
 IT Informazioni importanti sulla sicurezza
 PT Instruções de segurança
 RU Инструкции по безопасности
 PL Ważne zalecenia bezpieczeństwa
 SV Viktig säkerhetsinformation
 NO Kople støpsetil til en elektrisk stikkontakt
 DA Vigtige sikkerhedsoplysninger
 SU Tärkeitä turvallisuu tietoja



EN How to use the Philips LED Inspection lamp
 DE Verwendung der Philips LED-Inspektionslampe
 FR Comment utiliser la lampe baladeuse à LED Philips
 NL Gebruiksaanwijzing voor de Philips LED-inspectielamp
 ES Cómo usar la lámpara de inspección LED Philips
 IT Come usare la lampada di ispezione a LED Philips
 PT Modo de utilização da lâmpada de inspeção LED da Philips
 RU Эксплуатация светодиодного инспекционного фонаря Philips
 PL Używanie lampy inspekcyjnej LED Philips
 SV Användning av Philips inspektionslampe med LED
 NO Hvordan bruke Philips LED-inspeksjonslampe
 DA Sådan bruges Philips LED inspektionslampe
 SU Miten Philips LED-tarkastuslampua käytetään



EN How to recharge the Philips LED Inspection lamp
 DE Aufladen der Philips LED-Inspektionslampe
 FR Recharger la lampe baladeuse à LED Philips
 NL Opladen van de Philips LED-inspectielamp
 ES Cómo recargar la lámpara de inspección LED Philips
 IT Come ricaricare la lampada di ispezione a LED Philips
 PT Como recarregar a lâmpada de inspeção LED da Philips
 RU Как произвести перезарядку светодиодного инспекционного фонаря Philips
 PL Ładowanie lampy inspekcyjnej LED Philips
 SV Ladda upp Philips inspektionslampe med LED
 NO Hvordan lade opp Philips LED-inspeksjonslampe
 DA Sådan oplades Philips LED inspektionslampe
 SU Miten lataat Philips LED-tarkastuslampun



EN Maintenance
 DE Wartung
 FR Entretien
 NL Onderhoud
 ES Mantenimiento
 IT Manutenzione
 PT Manutenção
 RU Техническое обслуживание
 PL Konserwacja
 SV Underhåll
 NO Vedlikehold
 DA Vedligeholdelse
 SU Huolto

