

# PHILIPS

## AVENT

Electric breast pump

Double

Premium

Rechargeable battery

Timer display



SCF398



## Inspired by baby, made for mums everywhere Natural motion technology for quicker milk flow\*

Enter a new era of expressing with a perfect balance of suction and nipple stimulation inspired by the natural way babies drink. The Philips Avent electric breast pump keeps milk flow at an optimum and gently adapts to your nipple size and shape

### Personalised and easy to use

- Insulation Pouch included
- Minimal parts and intuitive setup
- Start/Pause function
- Memory function
- Quiet motor for a discreet experience anywhere
- Breast pump bag and pouch
- Personalised experience, 8 + 16 setting levels

### Gentle and comfortable

- Soft and adaptive silicone cushion
- Express without leaning forwards

### Quick expressing, more milk in less time\*

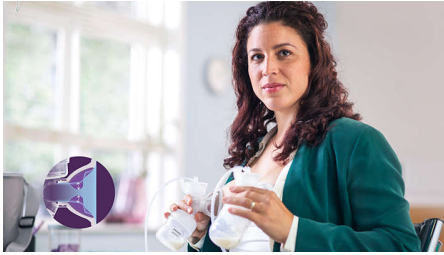
- Natural motion technology for a quick milk flow\*

### Rechargeable battery and timer display

- Rechargeable battery for pumping on the go

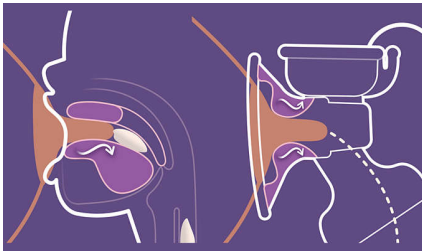
# Highlights

## Quick milk flow\*



Express more milk in less time\* with a cushion that stimulates the breast to express milk just like baby. It seamlessly adjusts from stimulation mode to expression mode and applies just the right amount of teat stimulation and suction for maximum milk flow. Based on milk flow initiation time (time to Milk Ejection Reflex — MER) results.\*

## Adapts to your nipple



Because we all come in different shapes and sizes, the silicone cushion gently flexes and adapts to fit your nipple. It fits 99.98% of nipple sizes\* (up to 30 mm).

## Sit comfortably



Feel relaxed as you express thanks to a design that lets you sit upright rather than having to lean forwards. No need to lean forward, clinically proven comfortable expressing position\*

## Personalise to your needs



Finely tune every session to your needs with a wide range of stimulation and expression settings. Our breast pump offers 8 stimulation and 16 expression levels for a personalised experience.

## Express anywhere discreetly



Express whenever and wherever you like thanks to our quiet motor with a slimline design.

## Use easily on the go



Express on the go without having to worry about a power supply. Our rechargeable battery comes with a micro-USB adapter and lasts up to 3 sessions on a single full charge.

## Easy to clean and set up



Our closed expression system means milk stays out of the tubing so there's less to clean. Fewer parts also make it a breeze to put back together again.

## Save your favourite settings



Know what you like? The breast pump automatically remembers your last settings, so all you need to do is sit down and press start.

## Track your pumping time

Track how long you express on each breast and your total pumping time with the digital timer display.

## Pause whenever you like



If you need to adjust or take a break, the start/pause button is always at your fingertips.

# Specifications

## Power

Mains voltage: 100V – 240 V

## Material

Breast pump: BPA free\* (food contact parts only)

## What is included

Disposable breast pad: 4 pcs

120 ml (4 oz) Bottle with Om+ nipple: 2 pcs

Expression kit: 2 pcs

Insulation pouch: 1 pcs

Micro-USB adapter: 1 pcs

Motor unit (Rechargeable): 1 pcs

Sealing disc: 2 pcs

Milk bags: 5 pcs

## Functions

Soft and adaptive cushion: Gentle stimulation



\* Based on milk flow initiation time (time to Milk Ejection Reflex — MER) results from clinical trial with 20 participants (Netherlands, 2019) compared to time to MER results for other Philips predecessor pump technology from Feasibility study with 9 participants (Netherlands, 2018)

\* 1)Mangel et al. Breastfeeding difficulties, breastfeeding duration, maternal body mass index, and breast anatomy: are they related?. Breastfeeding Medicine, 2019, (109 participants, Israel); (2)Ziemer et al. Skin changes and pain in the nipple during the 1st week of lactation.

\* Journal of Obstetric, Gynecologic & Neonatal Nursing, 1993, (20 Caucasian participants, USA); (3)Ramsay et al. Anatomy of the lactating human breast redefined with ultrasound imaging, 2005, (28 participants, Australia).

\* Based on questionnaire results for 1k cushion from clinical trial with 20 participants (Netherlands, 2019)

\* BPA-free breast pump: Only associated with the bottle and other parts that come into contact with breast milk. Following EU regulation, 10/2011