

PHILIPS

sonicare

Sonic electric
toothbrush

ProtectiveClean
6100

Built-in pressure sensor

3 modes, 3 intensities

2 x BrushSync features

Travel case



HX6870/47



Whiter teeth. Gently does it.

Whitens teeth in just 1 week.

Feel the difference of a gentle clean with our Pressure Sensor while whitening your teeth in 1 week.

Proven to improve oral health

- Safe and gentle on sensitive areas, orthodontics and dental work
- Whitens teeth in just one week

Designed around you

- Encouragement to brush thoroughly
- Makes traveling easier for you

Innovative technology

- Always know when to replace your brush heads
- Philips Sonicare's advanced sonic technology
- Connects smart brush handle and smart brush heads
- Lets you know when you're pressing too hard

Optimise your brushing

- Three modes, three intensity settings
- Brush heads select the optimal mode and intensity

Highlights

Naturally whiter teeth



Click on the W2 Optimal White brush head to remove surface stains and reveal a whiter smile. With its densely packed central stain-removal bristles, it's clinically proven to whiten teeth in just one week.

Brushing your way



This toothbrush allows you to customise your brushing with a choice of three modes and three intensities. Clean mode is standard for superior cleaning; White is the ideal mode for removing surface stains; and the Gum Care mode adds an extra minute of reduced-power brushing, so you can gently massage your gums. Three intensities allow you to switch the order of "higher" and "lower" to align with the intensities from left to right.

Safe and gentle



You can be sure of a safe brushing experience: our sonic technology is suitable for use with braces, fillings, crowns and veneers, and helps prevent cavities and improve gum health.

Too much pressure?



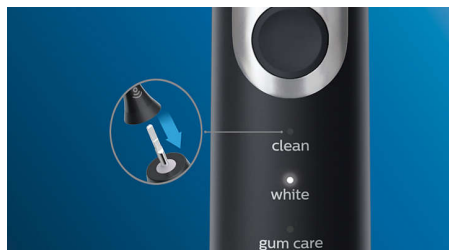
You may not notice if you're brushing too hard, but pressure sensor on your electric toothbrush will. If you start taking it out on your gums, the toothbrush will make a pulsing sound as a reminder to ease off on the pressure.

BrushSync technology



A microchip-enabled technology that detects and synchronises the smart brush head with the smart handle. The smart handle and smart brush head pair is a powerful combination that enables Smart mode pairing and Smart replacement reminders.

Mode and intensity pairing



Wondering which mode and intensity you should use? Wonder no longer. BrushSync mode pairing tells your smart handle which smart brush head you're using. So, if you click on a gum care brush head, for example, your toothbrush knows to select the optimal mode and intensity for your gums. All you need to do is to press the power button.

BrushSync replacement reminder



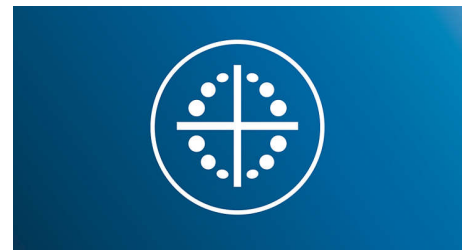
All brush heads wear out over time. But our BrushSync technology tracks how long you've been using your brush head for, and how hard you've been brushing. When it's time to replace it, a light on your handle and a short beep will let you know. That way, you can be sure your brush head is doing a good job.

Philips Sonicare technology



Philips Sonicare's advanced sonic technology pulses water between your teeth, and its brush strokes break plaque up and sweep it away for an exceptional daily clean.

Helpful timers



Our QuadPacer lets you know when you've spent just the right amount of time cleaning each part of your mouth, while our Smartimer tells you when you've brushed for the recommended two minutes.

Specifications

Power

Voltage: 110–220 V

Technical specifications

Operating time (full to empty): Up to 2 weeks

Battery: Rechargeable

Battery type: Lithium ION

Design and finishing

Colour: Black Silver

Service

Warranty: 2-year limited warranty

Ease of use

Handle: Slim ergonomic design

Handle compatibility: Easy click-on brush heads

Battery indicator: Light shows battery status

Brushing time: Up to 2 weeks

Items included

Travel case: 1

Brush heads: 2 W2 Optimal White standard

Handle: 1 ProtectiveClean

Charger: 1

Cleaning performance

Speed: Up to 62,000 brush movements/min

Health benefits: Improves gum health in only two weeks, Helps reduce cavities

Timer: Quadpacer and Smartimer

Pressure feedback: Vibrates handle to alert user

Modes

Clean: For exceptional everyday cleaning

3 intensities: Low, Medium, High

Gum Care: Gently massages gums

White: Removes surface stains

BrushSync Mode Pairing

C2 Optimal Plaque Control: Pairs with Clean mode

G2 Optimal Gum Care: Pairs with Gum Care mode

W2 Optimal White: Pairs with White mode

Smart sensor technology

BrushSync Replacement Reminder: Always know when to, replace brush heads

Pressure sensor: Alerts when brushing too hard

BrushSync Technology: Connects smart handle and, smart brush head

