

# PHILIPS



Washable hair  
clipper

Hairclipper series  
5000

Trim-n-Flow

28 length settings (0.5-28mm)

90 min cordless use/1h charge

100% washable



HC5630/15

## Fast, even, and precise haircut.

Extra precision for a versatile haircut.

The Hair Clipper 5000 by Philips gives you a fast, even, and precise haircut. The device's 28 length settings, Trim-and-Flow technology, and double-blade system lets you quickly achieve a sharp and even finish.

### Easy to use

- 100% washable for easy, hassle-free cleaning
- 28 length settings with Precision dial
- Up to 90 minutes of cordless use
- Ergonomic Design with a Comfortable Grip
- Extra Beard Comb with Click-On Stubble Attachment
- Easy, organised storage

### Performance

- Turbo Mode Boosts Extra Power and Ensures an Even Haircut
- Trim-and-Flow Tech for a Hassle-Free Perfect Haircut
- Remain as sharp as day one without oiling
- Maximum precision with Philips DualCut system

### Built to last

- Maintenance-Free Blades: No Oiling Needed, Ever

### Easy and convenient use

## Hairclipper series 5000

Washable hair clipper

HC5630/15

# Highlights

### Turbo Boost



Achieve even results for all hair densities. Activate Turbo Boost to increase the motor speed, making it easy to cut through thicker or denser hair.

### 28 lock-in length settings



Perfect for any haircut length, the Philips clipper includes 2 adjustable combs and an additional 2mm beard comb. Achieve precise cuts from 3mm to 28mm in 1mm increments. Use the 2mm stubble comb for a short haircut or to style your beard, or remove the comb for an ultra-close 0.5mm trim.

### Self-sharpening stainless steel blades



The self-sharpening steel blades are designed to be incredibly long-lasting. Even after 5 years they cut with the same precision and accuracy as day 1.

### Corded & cordless use



Don't get tangled up in your cordless hair clippers – one hour charge provides up to 90 minutes of powerful clipping time. Or keep it plugged in for uninterrupted trimming.

### 100% washable



Keep your clipper clean effortlessly by rinsing it under the tap for quick and easy maintenance.

### Comfortable grip



Philips clippers feature a textured grip for easy handling, ensuring you can cut your hair with control and comfort.

### Zero maintenance



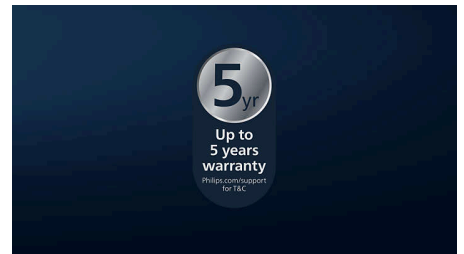
Experience clipping power that's easy to maintain— Philips' blades never need oiling.

### Up to 2-year guarantee



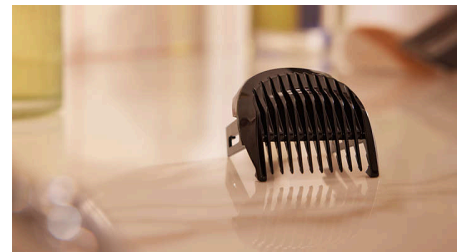
A grooming product built to last: the warranty offers coverage for up to 5 years, including a 2-year standard global warranty, with an additional 3 years available upon registering the device within 90 days of purchase.

### Hair clipper built to last with no oil required



All of our Hair clipping products\* are built to last. They come with a standard global 2 year warranty, including the option to extend up to 5 years\*\* and they never need to be oiled.

### Extra beard comb



It's all about the finishing touches. Trim your stubble or quickly touch up your hair with the additional 2mm beard comb included.

## Hairclipper series 5000

Washable hair clipper

HC5630/15

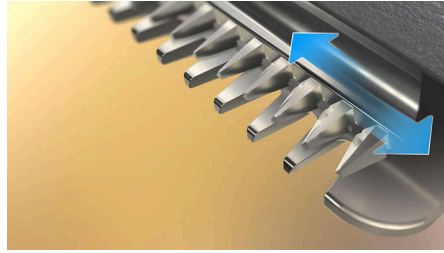
# Highlights

### Storage pouch



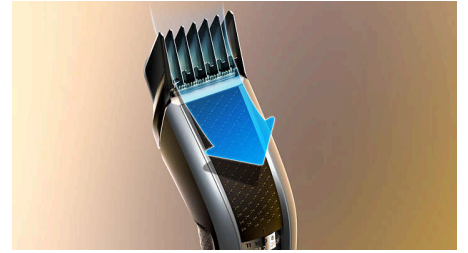
Keep your clipper, combs and accessories in check with the convenient storage pouch.

### DualCut Technology



Enjoy your desired look with precision. Philips DualCut technology features a double blade system designed to maintain day-one sharpness, consistently delivering equally sharp results every time.

### Trim-and-Flow technology



Effortlessly achieve your perfect haircut. Our innovative comb is designed to prevent hair from getting stuck or tangled, ensuring a smooth cutting experience from start to finish.

# Hairclipper series 5000

Washable hair clipper

HC5630/15

## Specifications

### Power system

**Battery type:** Li-ion

### Accessories

**Maintenance:** Cleaning brush

**Comb:** 1 beard comb, 2 hair combs (long and short)

**Storage:** Soft pouch

### Service

**Up to 5-year guarantee**

### Cutting system

**Cutter width:** 41 mm

**Cutting element:** Stainless steel blades

**Number of length settings:** 28

**Range of length settings:** From 0.5 to 28 mm

**Precision (size of steps):** By 1 mm

### Ease of use

**Maintenance free:** No oil needed

**Cleaning:** 100% washable

**Operation:** Corded & Cordless use

