

PHILIPS

IPL - Hair removal device

Lumea Series 7000

For body

With skin tone sensor

15 minutes to treat lower legs



SC1994/80



Long term hair-free smooth skin*

Achieve 92% hair reduction in 3 treatments*

Get silky smooth skin from the comfort of your home with Philips Lumea Series 7000. Safe, effective, and easy to use - order yours today and enjoy long-lasting results.

Long lasting hair removal with IPL technology

- Suitable for a wide variety of hair and skin types
- FREE Lumea App for a personal coach at your fingertips
- Developed with dermatologists to be safe, easy and effective.

Safe, fast and effective on body

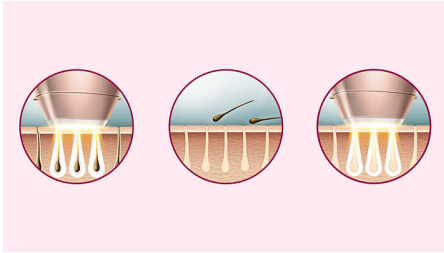
- Integrated skin tone sensor
- Achieve 92% hair reduction in as little as 3 treatments.

Maximum freedom, minimum hassle

- Large treatment window for fast application

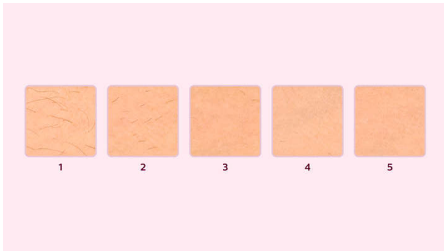
Highlights

Developed with dermatologists



As a leader in health technology, Philips developed Lumea IPL in consultation with dermatologists, for easy and effective use in the safety of your home. Derived from technology used in professional salons, Lumea IPL offers gentle treatment, even on sensitive areas. The treatment leaves your skin beautifully hair free and touchably smooth.

Proven effectiveness



The first 4 treatments must be carried out every 2 weeks. Subsequently, to maintain your results, simply touch up every 4 weeks. With just 8 touch up treatments you can be hair-free for at least 3 months.

Suitable hair and skin types



Philips Lumea Advanced works effectively, easily and safely on a wide variety of hair and skin types. It works on naturally dark blonde, brown and black colored hairs and on skin tones from very white to mid brown. As with other IPL based treatments, Philips Lumea cannot be used to treat white / grey, light blonde or red hair and is not suitable for very dark skin. This is due to the high contrast required between the pigment in hair color and pigment in the skin tone.

Skin Tone Sensor



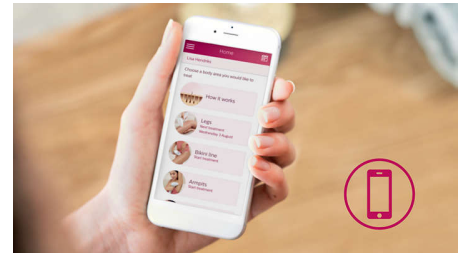
The integrated skin tone sensor measures the treated skin complexion at the beginning of each session and occasionally during the session. If it detects a skin tone that is too dark for this product it will automatically stop emitting pulses.

Fast treatment on legs



Big treatment window for fast application on large areas like legs.

FREE Lumea App



The Lumea App is free to download and offers a unique and personalized IPL experience – just for you. It is your very own personal coach to ensure you are getting the most out of your Lumea and using it in the correct way to achieve long-lasting results. The App helps you create your personalized treatment schedule per body area, with tips and advice during each treatment. All you need to do is check the app regularly to make sure you are up to date with any notifications or reminders.

Specifications

Application areas

Body areas: Arms, Legs, Belly, Armpits, Bikini

Safety and adjustable settings

Integrated UV filter: Protects skin from UV light

5 light energy settings: Adjustable to your skin type

Integrated safety system: Prevent unintentional flashing

Skin Tone sensor: Detects your skin tone

Application mode

Slide and Flash: For easy motion application

Corded / cordless use: Corded

Stamp and Flash: For treatment on curvy areas

Power

Voltage: 100-240 V

Corded use

Consumer Trade Item

Height: 26.6 cm

Width: 19 cm

Length: 12 cm

Net weight: 0.826 kg

Gross weight: 1.08 kg

GTIN: 8710103982135

Country of origin: HU

Harmonized system code: 85437090

Outer Carton

Height: 19.7 cm

Width: 24.8 cm

Length: 28 cm

Net weight: 1.652 kg

Gross weight: 2.402 kg

GTIN: 18710103982132

Attachments

Body attachment (4cm²): For use below the neckline

Service

Warranty: 2 years global warranty + 1 extra year of warranty upon product registration within 90 days

Items included

Instructions for use: User manual

Storage: Pouch

Adapter: 24V / 1500mA

Accessory: Cleaning cloth

Application time

Bikini: 4min

Lower leg: 15 min

Armpit: 2,5 min

