

PHILIPS

2600 Series

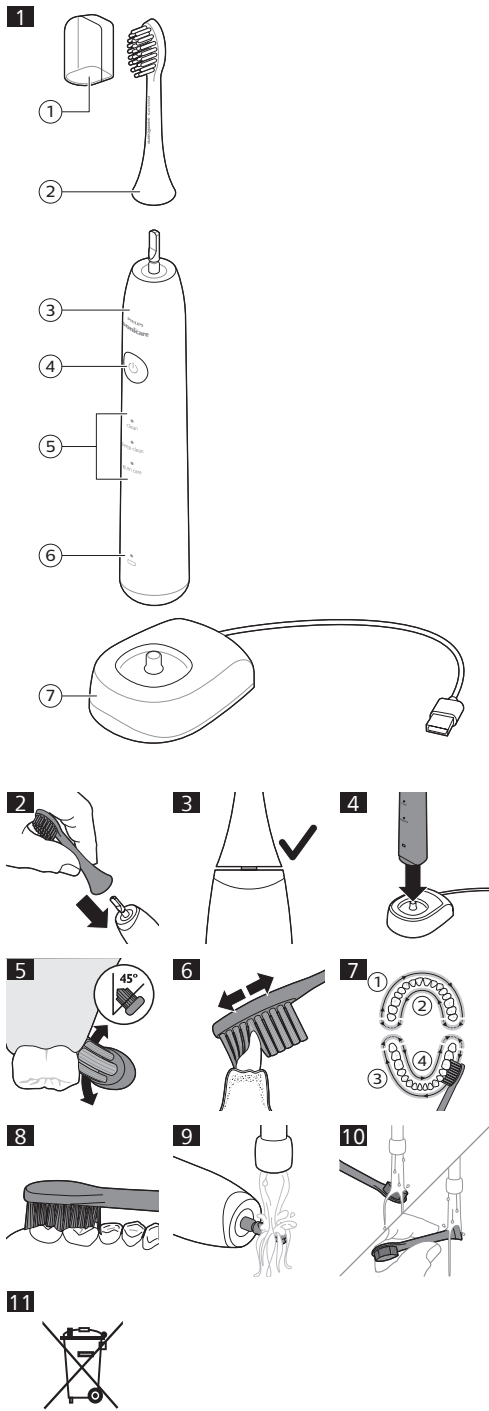


300008702582 (Z022-12-08)

©2022 Koninklijke Philips N.V. (KPNV), 版权所有。飞利浦及利普浦品牌 (KPNV 的商 标、Sonicare 和 Sonicare 徽标是 Philips Oral Healthcare, LLC 和/或 KPNV 的商 标)。

©2022 Koninklijke Philips N.V. (KPNV), 版权所有。飞利浦及利普浦品牌 (KPNV 的商 标、Sonicare 和 Sonicare 徽标是 Philips Oral Healthcare, LLC 和/或 KPNV 的商 标)。

©2022 Koninklijke Philips N.V. (KPNV), 版权所有。飞利浦及利普浦品牌 (KPNV 的商 标、Sonicare 和 Sonicare 徽标是 Philips Oral Healthcare, LLC 和/或 KPNV 的商 标)。



English

Introduction

Congratulations on your purchase and welcome to Philips! To fully benefit from the support that Philips offers, register your product at www.philips.com/welcome.

Important safety information

Read this important information carefully before you use the appliance and save it for future reference.

READ ALL INSTRUCTIONS BEFORE USE

DANGER

- Keep the charger away from water. Do not place or store the appliance where it can fall or be pulled into a tub or sink.
- Do not immerse the charger in water or any other liquid.
- After cleaning, make sure the charger is completely dry before you connect it to the wall socket.

WARNINGS

- This appliance can be used by children and persons with reduced physical, sensory or mental capabilities or lack of experience and knowledge if they have been given supervision or instruction concerning use of the appliance in a safe way and understand the hazards involved. Cleaning and user maintenance shall not be made by children without supervision.
- Children shall not play with the appliance.
- If the appliance is damaged in any way (brush head, toothbrush handle or charger), stop using it.
- The USB cord cannot be replaced. If the USB cord is damaged, discard the charger.
- Always replace the charger with one of the original type in order to avoid a hazard.
- This appliance contains no user-serviceable parts.
- If the appliance is damaged, contact the Consumer Care Center in your country (see "Warranty and support").
- Keep the cord away from heated surfaces.
- Do not use the charger outdoors.

CAUTION

- Do not clean the brush head, handle, or charger in the dishwasher.
- If you have had oral or gum surgery in the previous 2 months, consult your dentist before you use this appliance.
- Consult your dentist if excessive bleeding occurs after using this appliance or if bleeding continues to occur after 1 week of use. Also consult your dentist if you experience discomfort or pain when you use this appliance.
- This Philips appliance complies with the safety standards for electromagnetic devices. If you have a pacemaker or other implanted device, contact your doctor or the appliance manufacturer of the implanted appliance prior to use.
- If you have medical concerns, consult your doctor before you use this appliance.
- This appliance has only been designed for cleaning teeth, gums and tongue. Do not use it for any other purpose. Stop using the appliance and contact your doctor if you experience any discomfort or pain.
- This appliance is a personal care device and is not intended for use on multiple patients in a dental practice or institution.
- Do not use other brush heads than the brand that came with your Philips Sonicare 2600 Series.
- Stop using a brush head with crushed or bent bristles. Replace the brush head every 3 months or sooner if signs of wear appear.

Electromagnetic fields (EMF)

This Philips appliance complies with all applicable standards and regulations regarding exposure to electromagnetic fields.

Battery safety instructions

- Only use this product for its intended purpose and follow the general and battery safety instructions as described in this user manual. Any misuse can cause electric shock, burns, fire and other hazards or injuries.
- Charge, use and store the product at a temperature between 0 °C and 40 °C.
- Always unplug the product when it is fully charged.
- Do not burn products and their batteries and do not expose them to direct sunlight or to high temperatures (e.g. in hot cars or near hot stoves). Batteries may explode if overheated.
- If the product becomes abnormally hot, gives off an abnormal smell, changes color or if charging takes much longer than usual, stop using and charging the product and contact your local Philips dealer.
- Do not place products and their batteries in microwave ovens or on induction cookers.
- This product contains a rechargeable battery that is non-replaceable. Do not open the product to replace the rechargeable battery.
- When you handle batteries, make sure that your hands, the product and the batteries are dry.
- To prevent batteries from heating up or releasing toxic or hazardous substances, do not modify, pierce or damage products and batteries and do not disassemble, short-circuit, overcharge or reverse charge batteries.
- To avoid accidental short-circuiting of batteries after removal, do not let battery terminals come into contact with metal objects (e.g. coins, hairpins, rings). Do not wrap batteries in aluminum foil. Tape battery terminals or put batteries in a plastic bag before you discard them.
- If batteries are damaged or leaking, avoid contact with the skin or eyes. If this occurs, immediately rinse well with water and seek medical care.

Your Philips Sonicare (Fig. 1)

- 1 Travel cap
- 2 Brush head
- 3 Handle
- 4 Power on/off and mode button
- 5 Brushing modes
- 6 Battery indicator
- 7 Charger

Note: Appearance may slightly differ, depending on the model.

Note: Power adapter not included. Only use 5V IPX4 adapter. It is recommended to use a Philips adapter; see the Philips website for current information.

Getting started

Attaching the brush head

- 1 Align the brush head so the bristles point in the same direction as the front of the handle.
- 2 Press the brush head down onto the metal shaft until there is a small 1-2mm gap. (Fig. 3)

Note: It is normal to see a slight gap between the brush head and the handle (Fig. 3). This allows the brush head to vibrate properly.

Charging your Philips Sonicare

- 1 Place the power toothbrush handle on the charger (Fig. 4).
- 2 Connect the charger to a 5V USB wall adapter.
- 3 Your toothbrush continues to charge until it is fully charged.
 - When the toothbrush is charging, the battery indicator pulsates green.
 - When fully charged, the battery indicator will light up solid green for 30 seconds before turning off.

Note: It can take up to 10 hours to fully charge the battery, but you can use the toothbrush before it is fully charged.

Using your Philips Sonicare toothbrush

If you are using your Sonicare toothbrush for the first time, it is normal to feel more vibration than when using a non-electric toothbrush. It is common for first time users to apply too much pressure. Only apply gentle pressure and let the toothbrush do the brushing for you. Please follow brushing instructions below for the best experience.

Brushing instructions

- 1 Wet the bristles and apply a small amount of toothpaste.
- 2 Place the toothbrush bristles against the teeth at a slight angle (45 degrees) (Fig. 5), pressing gently to make the bristles reach the gumline or slightly beneath the gumline.
 - Note: Do not turn on the toothbrush until the brush head is against your teeth.
- 3 Press the power on/off button to turn on the Philips Sonicare.
 - Note: Keep the center of the brush in contact with the teeth at all times.
- 4 Gently keep the bristles placed on the teeth and in the gumline. Brush your teeth with small back and forth motion so the bristles reach between the teeth. Continue this motion throughout your brushing cycle.
 - Note: The bristles should slightly flare. Do not scrub. It is not recommended to scrub as you would with a manual toothbrush.

- 5 To clean the inside surfaces of the front teeth, tilt the brush handle semi-upright and make several vertical overlapping brushing strokes on each tooth (Fig. 6).
 - Note: To make sure you brush evenly throughout the mouth, divide your mouth into 4 sections using the Quadpacer feature (see chapter 'Features').
- 6 Begin brushing in section 1 (outside upper teeth) and brush for 30 seconds before you move to section 2 (inside upper teeth). Continue brushing in section 3 (outside lower teeth) and brush for 30 seconds before you move to section 4 (inside lower teeth) (Fig. 7).
 - Note: After two minutes running, add 1 more minute for thoroughly cleaning.

Note: To switch off the power toothbrush, hold down the power button for 3 seconds or more.

- 7 After you have completed the brushing cycle, you can spend additional time brushing the chewing surfaces of your teeth and areas where staining occurs. You can also brush your tongue, with the toothbrush turned on or off, as you prefer (Fig. 8).
 - Note: To switch off the power toothbrush, hold down the power button for 3 seconds or more.

Your Philips Sonicare toothbrush should be safe to use on braces (brush heads wear out sooner when used on braces) and dental restorations (fillings, crowns, veneers) if they are properly adhered and not compromised. If a problem occurs, please follow up with a dental professional.

Battery status

This Philips Sonicare toothbrush is designed to provide at least 60 brushing sessions after fully charged for 10 hours, each session lasting 2 minutes. When the battery is low, the battery indicator starts to flash.

- Note: When the battery is completely empty, the toothbrush switches off. Place the handle on the charger to charge it.

Note: To keep the battery fully charged at all times, you may keep your Philips Sonicare toothbrush on the charger when not in use.

Note: Battery usage time is expected to reduce over product life time.

Features

Brushing modes

Your power toothbrush is equipped with three different modes:

Clean
Complete whole mouth cleaning (2 minutes).

Deep Clean
Removes stains on teeth (3 minutes).

Gum Care

Gentle cleaning of gums (2 minutes).

Note: When you use the toothbrush for the first time, the default mode is „clean“.

To toggle between the brushing modes:

- Press the power button once to turn on the toothbrush.
- Press a second time **within 3 seconds** to change the brushing mode.
- After the toothbrush has been on five seconds, if you want to change modes, you'll need to turn the toothbrush off, then on and press the power button **within 3 seconds**.
- You can also hold the power button down for **3 seconds or more** to turn the toothbrush off.

Note: There is 3 seconds anti-splash at beginning of each mode.

Smartimer

The Smartimer indicates that your brushing cycle is complete by automatically turning off the toothbrush at the end of the brushing cycle. Dental professionals recommend brushing no less than 2 minutes twice a day.

Quadpacer

The Quadpacer is an interval timer that has a short pause every 30 seconds to remind you to brush the 4 sections of your mouth evenly and thoroughly (Fig. 7).

Cleaning

You should clean your Philips Sonicare toothbrush regularly to remove toothpaste and other residue. Failure to clean your Philips Sonicare toothbrush may result in an unhygienic product and damage to it may occur.

Warning: Do not clean brush heads, the handle or the charger in the dishwasher.

Warning: Do not clean with boiling hot water.

Toothbrush handle

- 1 Remove the brush head and rinse the metal shaft area with warm water (Fig. 9). Make sure you remove any residual toothpaste.

Caution: Do not push on the rubber seal on the metal shaft with sharp objects, as this may cause damage.

- 2 Wipe the entire surface of the handle with a damp cloth.

Note: Do not tap the handle on the sink to remove excess water.

Brush head

- 1 Rinse the brush head and bristles after each use (Fig. 10).
- 2 Remove the brush head from the handle and rinse the brush head connection with warm water at least once a week. Rinse the travel cap as often as needed.

Charger

- 1 Unplug the charger before you clean it.
- 2 Wipe the surface of the charger with a damp cloth.

Storage

If you are not going to use the product for a long time, unplug it, clean it (see chapter 'Cleaning') and store it in a cool and dry place away from direct sunlight.

Replacement

Replace Philips Sonicare brush heads every 3 months to achieve optimal results. Use only Philips Sonicare brush heads compatible with Philips Sonicare 2600 Series handle.

Troubleshooting

This chapter summarizes the most common problems you could encounter with the appliance. If you are unable to solve the problem with the information below, visit www.philips.com/support for a list of frequently asked questions or contact the Consumer Care Center in your country.

Problem	Possible cause	Solution
I cannot fully attach the brush head. There is a gap between the brush head and handle.	The brush head is too close to the body of the handle.	This is normal. A small gap is necessary to allow movement in order to deliver the vibrations needed to clean your teeth.
I have charged my toothbrush, but it only works for a short time.	The toothbrush handle is not placed vertically on the charger, resulting in no charge.	Place handle vertically on charger base and make sure the charger is plugged in.
The toothbrush stops working.	The battery is empty.	Charge the toothbrush handle on the charger.

Recycling

- Do not throw away the product with the normal household waste at the end of its life, but hand it in at an official collection point for recycling. By doing this, you help to preserve the environment.
- This product contains a built-in rechargeable battery which shall not be disposed of with normal household waste. Please take your product to an official collection point or a Philips service center to have a professional remove the rechargeable battery.

- Follow your country's rules for the separate collection of electrical and electronic products and rechargeable batteries. Correct disposal helps prevent negative consequences for the environment and human health.

Removing the rechargeable battery

Only remove the rechargeable battery when you discard the product. Before you remove the battery, make sure that the product is disconnected from the wall socket and that the battery is completely empty.

Take any necessary safety precautions when you handle tools to open the product and when you dispose of the rechargeable battery.

- 1 Remove the inner body from the handle.
- 2 Remove the rechargeable battery from the inner body.

Warranty and support

If you need information or support, please visit www.philips.com/support or read the international warranty leaflet.

Warranty restrictions

The terms of the international warranty do not cover the following:

- Brush heads.
- Damage caused by use of unauthorized replacement parts.
- Damage caused by misuse, abuse, neglect, alterations or unauthorized repair.
- Normal wear and tear, including chips, scratches, abrasions, discoloration or fading.

简体中文

说明

感谢您的惠顾，很高兴您选择飞利浦！为了让您能充分享受飞利浦提供的支持，请在www.philips.com/welcome上注册您的产品。

重要安全信息

使用产品之前，请仔细阅读本重要信息，并妥善保管以供日后参考。

使用前请阅读所有说明

危险

- 使充电器远离水源。请勿将本产品放置或保存在可能掉落或推入浴缸或水槽的地方。
- 不要将充电器浸入水中或其他液体中。
- 清洁后，务必确保充电器完全干燥，再将其连接至电源插座。

警告

- 本产品适合由儿童和肢体不健全、感觉或精神上有障碍或缺乏相关经验和知识的人士使用，但前提是有人对他们使用本产品进行监督或指导，以确保他们安全使用，并且让他们明白相关的危害。不要让儿童在无人监督的情况下对本产品进行清洁和保养。
- 切勿让儿童玩弄本产品。
- 如果本产品受到任何损坏（刷头、牙刷手柄或充电器），请停止使用。
- 不得更换 USB 线缆。如果 USB 线缆损坏，请丢弃充电座。
- 务必使用原装型号的充电座进行更换，以免发生危险。
- 本产品不包含任何用户可维修的零部件。如果本产品已损坏，请联系您所在国家/地区（请参见《保修和支持》）的客户服务中心。
- 请将电源线远离高温表面。
- 切勿在户外使用充电座。

警告

- 请勿在洗碗机中清洗牙刷头、手柄或充电座。
- 如果您在前 2 个月中曾做过口腔或牙龈手术，请在使用本产品前先咨询您的牙医。
- 如果使用本产品后牙龈大量出血或在使用 1 周后仍会出血，请咨询您的牙医。如果使用本产品时感觉不适或疼痛，也请咨询您的牙医。
- 本飞利浦产品符合电磁装置的安全标准。有关任何涉及心脏起搏器或其他植入装置的问题，请在使用之前咨询医生或相关植入产品的产品制造商。
- 如果您有医学问题，请在使用本产品前咨询您的医生。
- 本产品设计仅用于清洁牙齿、牙龈和舌头。请勿将其用作任何其他用途。如果感觉任何不适或疼痛，请停止使用本产品并与医生联系。

- 本产品为私人用品，不可供牙医诊所或机构对多位患者使用。
- 切勿使用非 Philips Sonicare 2600 Series 随附品牌的其他刷头。
- 请停止使用变形或刷毛弯曲的牙刷头。请每 3 个月更换一次牙刷头，如果出现磨损迹象，应提前更换。

电磁场 (EMF)

本 Philips 产品符合所有有关暴露于电磁场的适用标准和法规。

电池安全说明

- 仅可将本产品用于原定用途，并应遵循本产品手册中的一般说明和电池安全说明。如有滥用，可能会导致电击、烧伤、火灾和其他危害或伤害。
- 充电、使用和存放本产品的温度应介于 0 °C 至 40 °C 之间。
- 产品充满电后务必拔下电源插头。
- 切勿燃烧产品及其电池，也不要将其暴露在阳光直射或高温的环境中（例如炎热的汽车内或热炉附近）。如果过热，电池可能会爆炸。
- 如果产品异常发热、发出异味、变色或充电时间比平时长，请停止使用并停止为其充电，并联系您当地的飞利浦经销商。
- 切勿将产品及其电池放置在微波炉中或电磁炉上。
- 本产品包含不可更换的充电电池。切勿拆开本产品更换充电电池。
- 处理电池时，请确保您的双手、产品和电池都是干燥的。
- 为防止电池发热或释放有毒有害物质，切勿改装、刺穿或损坏产品和电池，切勿拆卸电池、使电池短路、过度充电或反向充电。
- 为避免电池拆卸后发生意外短路，切勿让电池端子接触金属物体（例如硬币、发夹、戒指）。切勿用铝箔包裹电池。在丢弃之前，请用胶带将电池端子粘住或将电池放在塑料袋中。
- 如果电池损坏或出现泄漏，请避免与皮肤或眼睛接触。如果不慎接触，请立即用清水冲洗并就医。

Philips Sonicare（图 1）

- 1 旅行保护盖
- 2 牙刷头
- 3 手柄
- 4 电源开/关和模式按钮
- 5 刷牙模式
- 6 电量指示灯
- 7 充电器

注意：外观可能略有不同，具体取决于型号。

注意：不随附电源适配器。在中国，使用者必须使用符合 GB4706.1-2005 标准的 5V 直流、2W、IPX4 电源适配器。建议使用飞利浦适配器；有关最新信息，请访问飞利浦网站。

开始使用

安装牙刷头

- 1 对齐牙刷头，使刷毛方向与牙刷手柄正面的方向一致。
- 2 将刷头向下按到金属轴上，直至剩余 1-2mm 的小间隙为止。（图 3）

注意：刷头与手柄之间会有微小间隙，这属于正常现象（图 3）。这样刷头才能正常振动。

为您的飞利浦 Sonicare 声波震动牙刷充电

- 1 将电动牙刷手柄置于充电器上（图 4）。
- 2 将充电器连接到 5V USB 插墙式适配器。
- 3 您的牙刷将持续充电，直至充满电。
 - 牙刷在充电时，电池指示灯呈绿色闪烁。
 - 充满电后，电池指示灯将呈绿色持续亮起 30 秒，然后关闭。

注意：电池充满电需要 10 小时，不过牙刷在未充满电时亦可使用。

