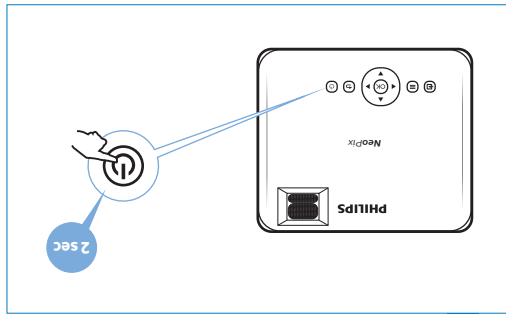
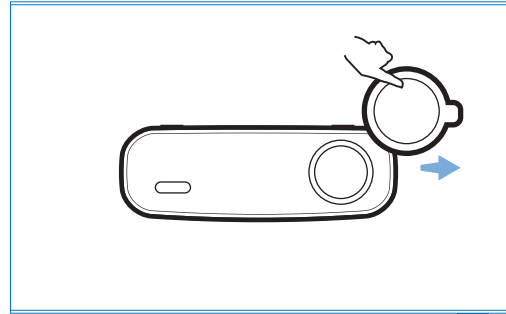


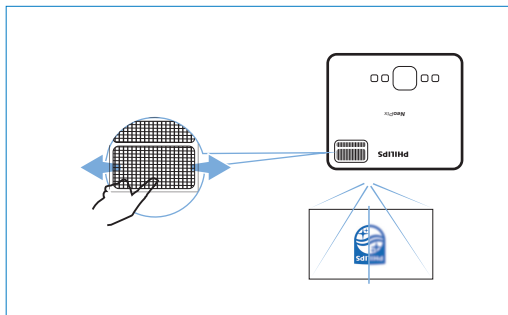
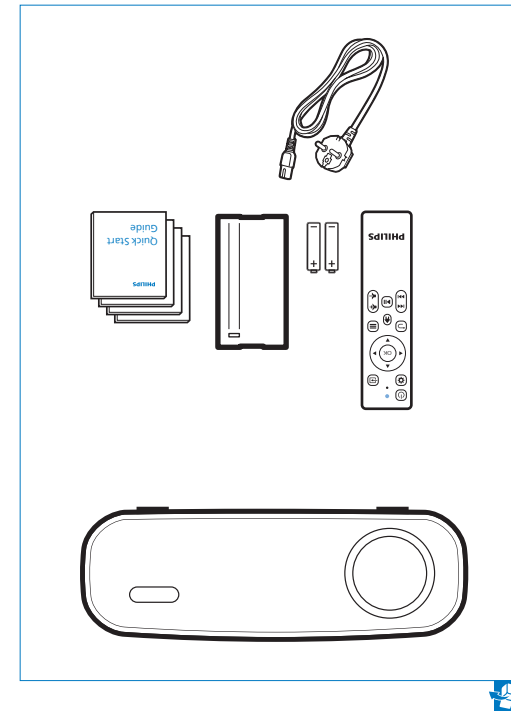
6 ▶ Keystone



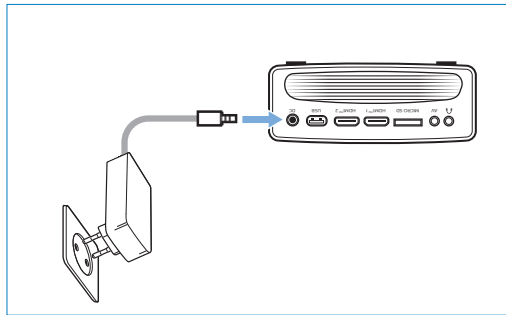
4 ▶ On



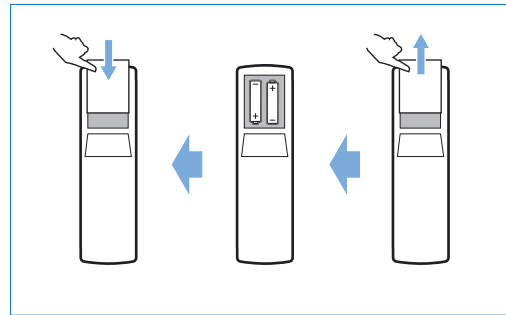
2 ▶ Remove lens cover



5 ▶ Focus



3 ▶ Power



1 ▶



Screeneo Innovation SA
Route de Lully 5C
1131 - Tolochenaz - Switzerland
www.philips.com
philips.projector.eu@screeneo.com

EUROPEAN Service Center:
Euro Repair Center
Europa-Allee-77
54343 Föhren
Germany

NORTH AMERICA Service Center:
Cooper General Global Services, Inc.
Attn: Screeneo/Philips
920 Minters Chapel Road, Suite 600
Grapevine, TX 76051

The terms HDMI, HDMI High-Definition Multimedia Interface, HDMI trade dress and the HDMI Logos are trademarks or registered trademarks of HDMI Licensing Administrator, Inc.

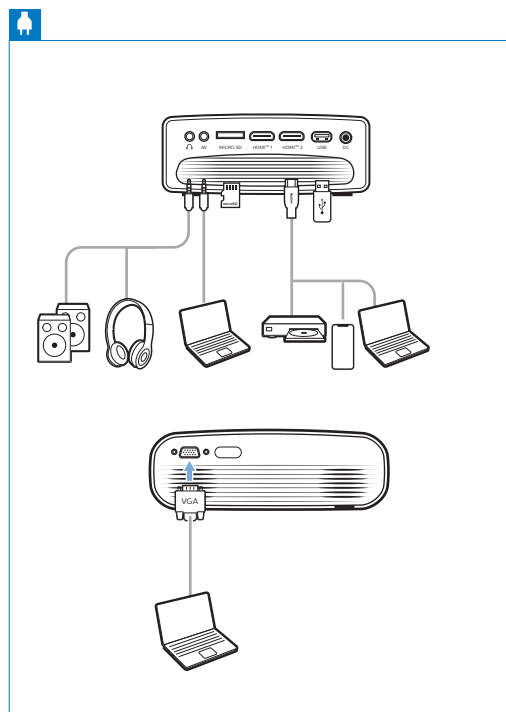
HDMI
HIGH-DEFINITION MULTIMEDIA INTERFACE



FCC ID: 2ASRT-NPX641
This device complies with part 15 of the FCC Rules. Operation is subject to the following two conditions: (1) This device may not cause harmful interference, and (2) this device must accept any interference received, including interference that may cause undesired operation.

Philips and the Philips Shield Emblem are registered trademarks of Koninklijke Philips N.V. and are used under license. Screeneo Innovation SA is the warrantor in relation to the product with which this booklet was packaged.

2022 © Screeneo Innovation SA
All right reserved



PHILIPS
NeoPix Ultra One
Home projector

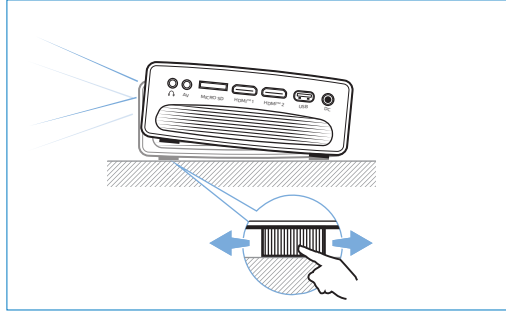


**Quick
Start Guide**

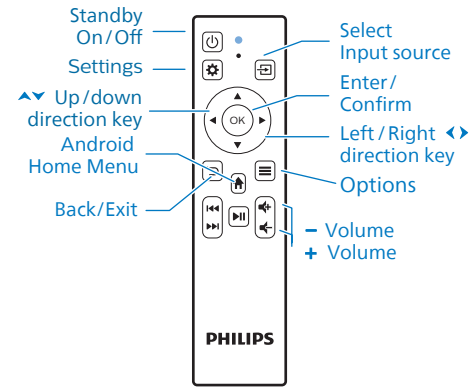
Download the **full user manual** at:
www.philips.com/support and register
your product for further support



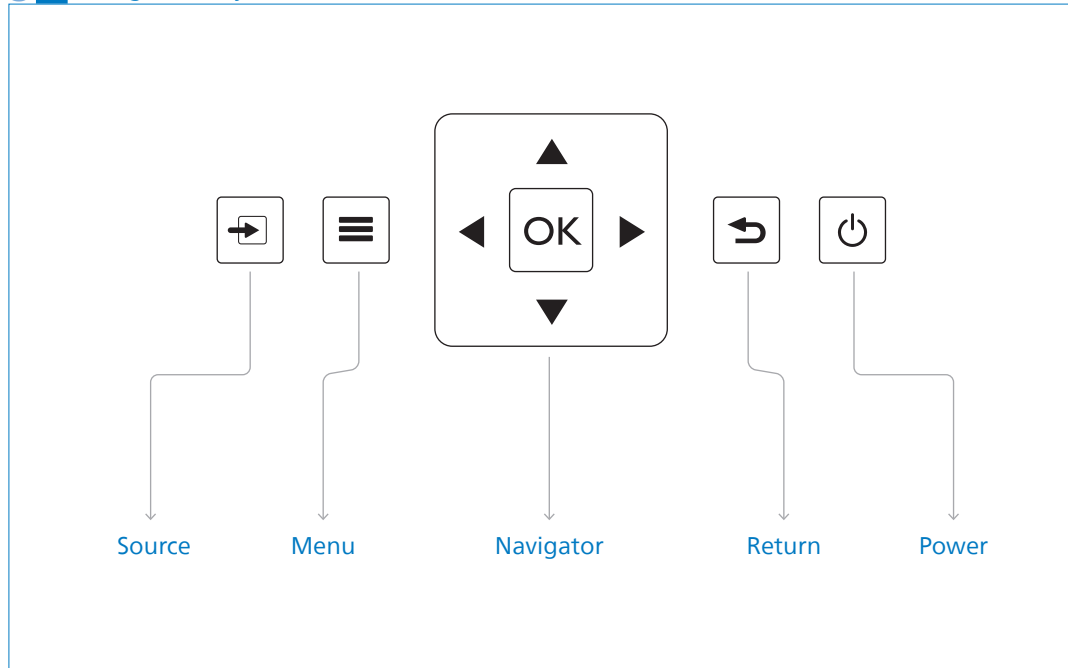
7 ▶ Adjustment knob



9 ▶ Projector remote control



8 ▶ Navigation Keys



10 ▶ Connecting phones/tablets to HDMI

