

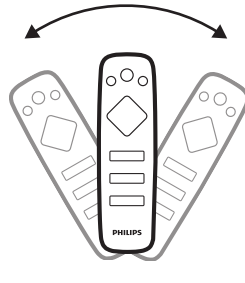
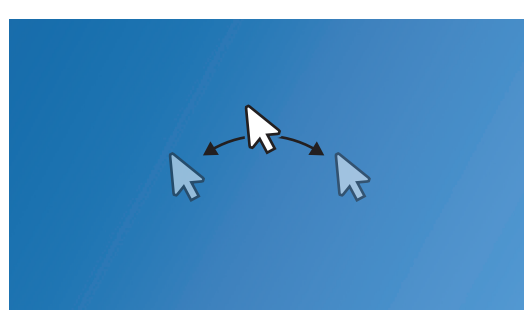
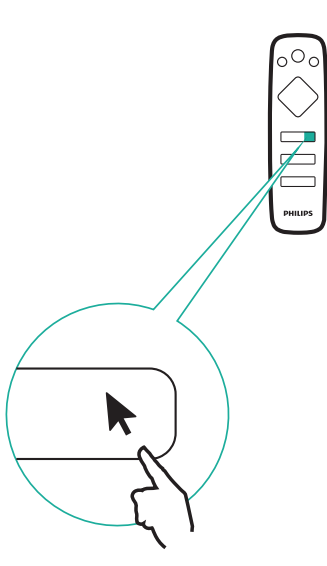
Always there to help you

Register your product for further support at www.philips.com/support

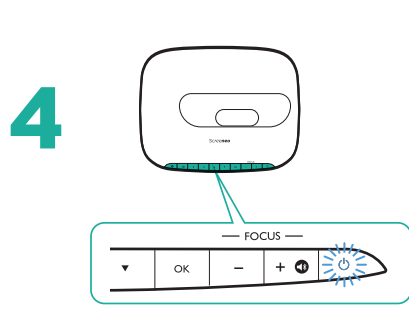
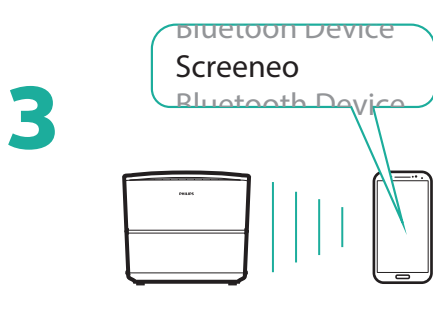
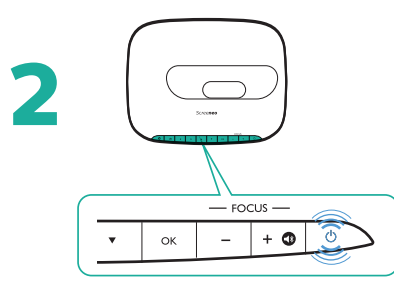
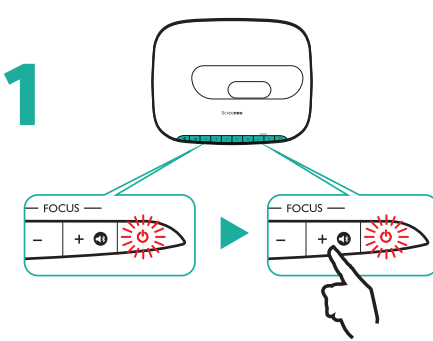
Quick Start Guide



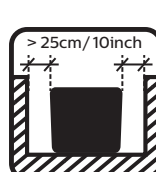
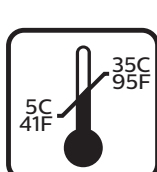
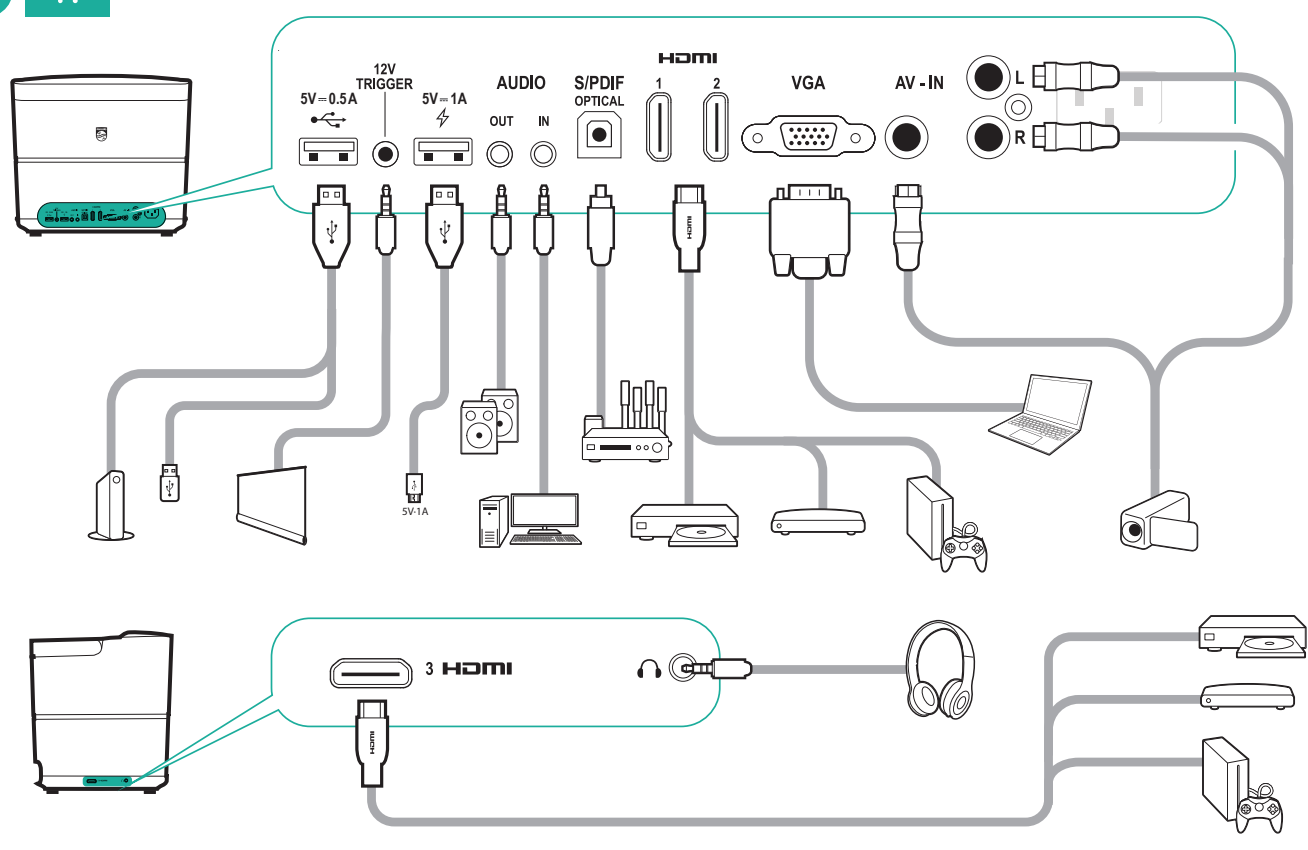
4 Air Mouse

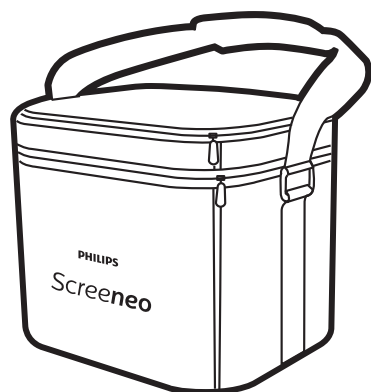
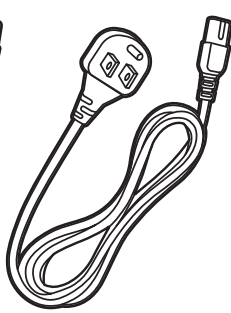
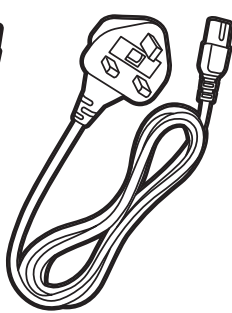
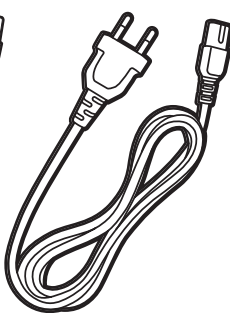
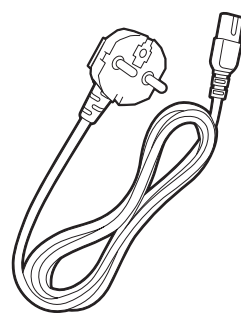
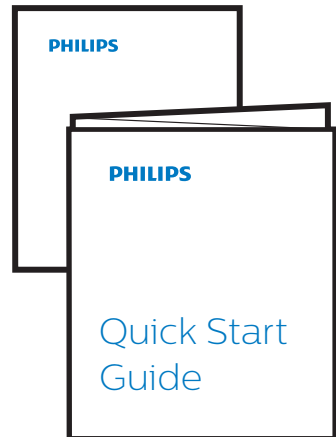
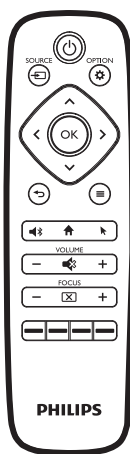
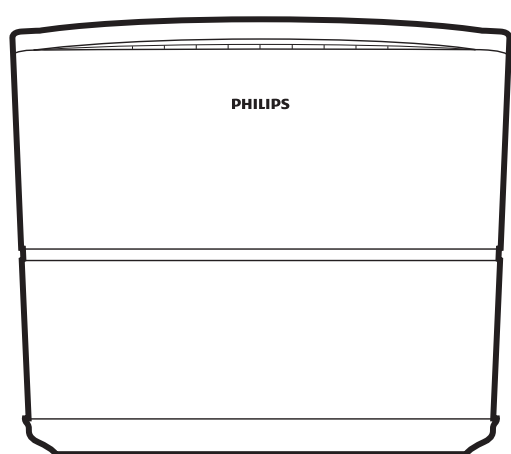


5 Bluetooth speaker

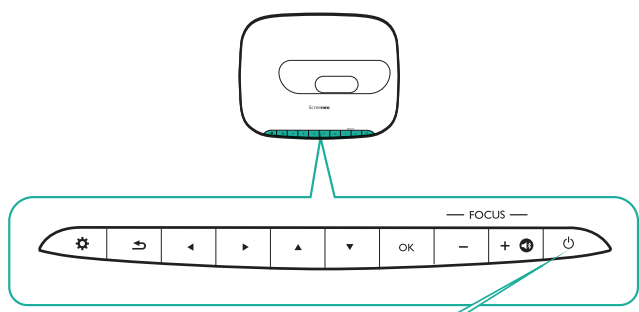
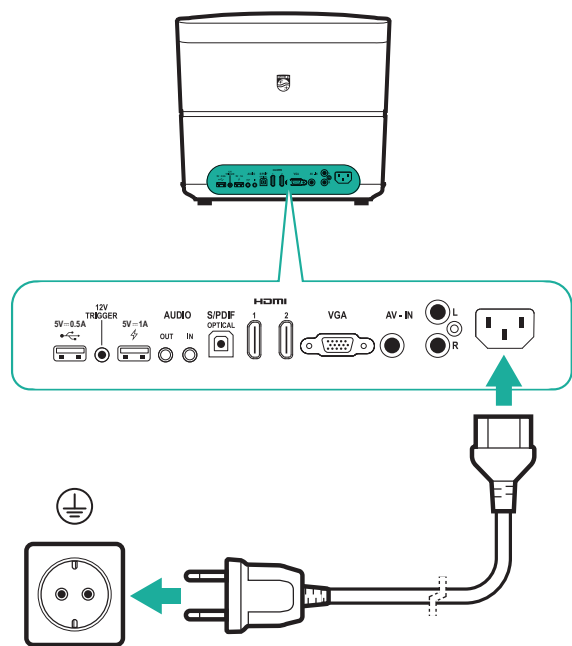


6





1 ▶ On/Off

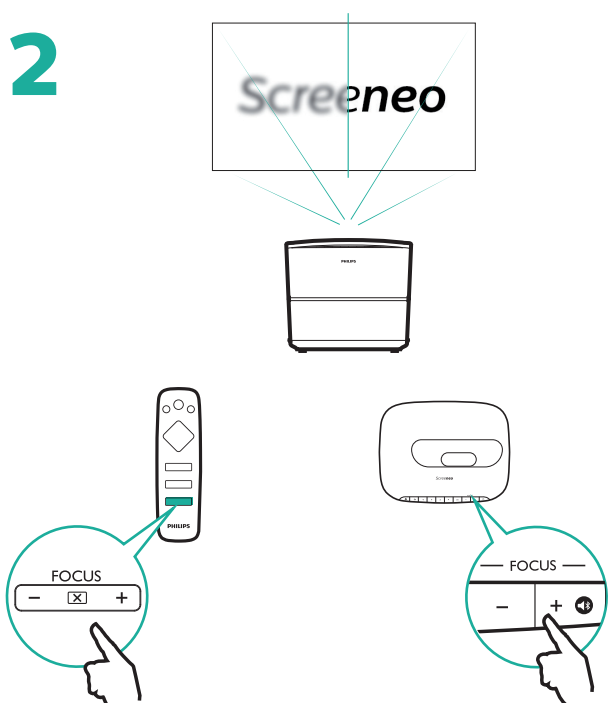
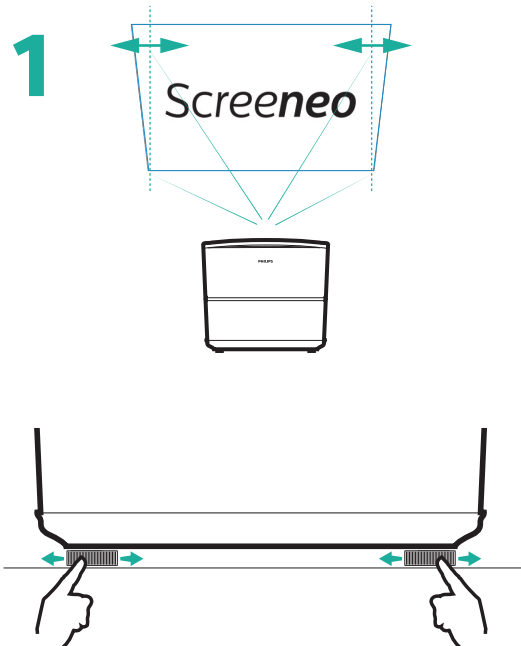


0,5 sec
On

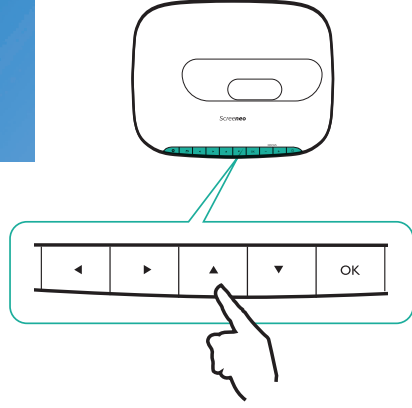
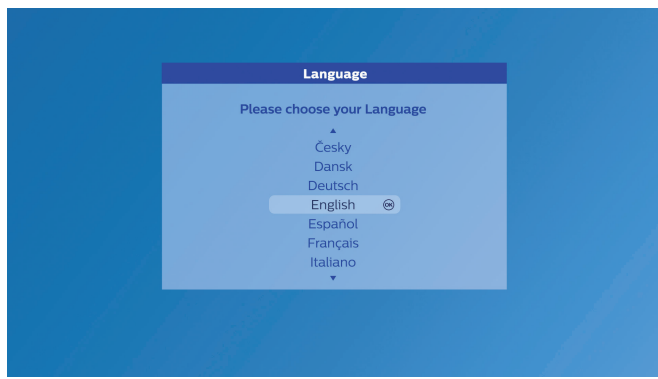
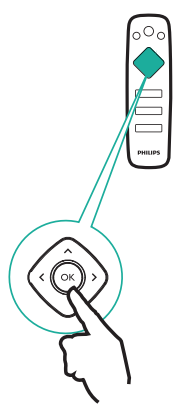
2 x 0,5 sec
Off

10 sec
Reset

2 ▶ Keystone and Focus



3 ▶ Menu



FCC ID: 2AASRT-HDP3550
This device complies with part 15 of the FCC Rules.
Operation is subject to the following two conditions: (1) This device may not cause harmful interference, and (2) this device must accept any interference received, including interference that may cause undesired operation.

2019 © Screeneo Innovation SA
All right reserved
Screeneo Innovation SA is the warrantor in relation to the product with which this booklet was packaged.
Philips and the Philips Shield Emblem are registered trademarks of Koninklijke Philips NV, used under license.
www.philips.com/welcome
philips.projector.eu@screeneo.com
Screeneo Innovation SA
Route de Lully 5C - 1131 - Tolochenaz - Switzerland

