

PHILIPS

Home projector

Screeneo U5

Up to 150" screen size

4K UHD resolution

Android TV experience

2.2 Sound

SCN550



Ultra-short throw, Ultimate 4K experience!

A stunning 120-inch (305 cm) image from only 28cm (11inch) from the wall and up to 150". Incredible color accuracy with Rec.709 HDR10 and Dolby Vision. Android TV and ChromeCast built-in. Mind Blowing 2x10 watts with 4 channels Dolby Atmos.

Mind-Blowing Image

- Small room, Incredible image
- 4K laser Projector
- Cutting Edge Image Quality
- Flow Motion 4

All-in-One Smart Projector

- Android TV Experience
- OK Google Ready
- ChromeCast Built-in

Immersive Sound

- Room Filling Sound
- Dolby Atmos and DTS HD
- Enriched Connectivity

Effortless Connections

- Wireless functionalities

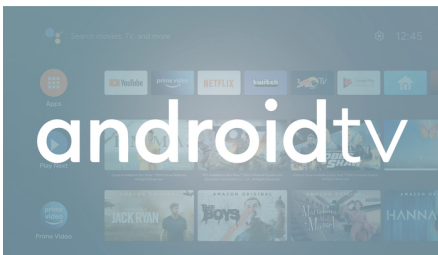
Highlights

4K laser Projector



Watch movies and more in True 4K UHD sharpness, full of the fine detail that can be lost at lower resolutions. The picture remains lifelike and text is crystal-clear when displayed at up to 120" or more. Texas Instrument DLP cinema technology delivers dramatic home cinema viewing with vivid pictures, deep contrast and a bright image in any conditions. The 2,200 ANSI Lumens Laser light source displays rich, and vivid colors for more up to 25,000hours: you won't need for blackout curtains!

Android TV Experience



Your Philips Android TV Projector gives you the content you want when you want it. You can customise the home screen to display your favourite apps, making it effortless to start streaming the movies and shows you love or pick up where you left off. Our OSD has a new intuitive UI design, which makes it a breeze to navigate and find your way around. Powered by the fastest AMLOGIC CPU, it provides a smooth, best in class Android TV experience.

ChromeCast Built-in



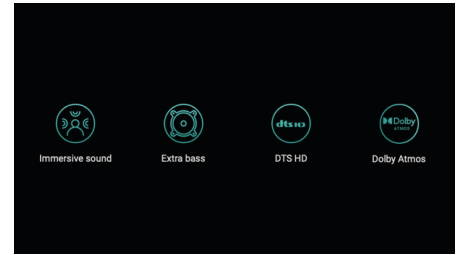
Chromecast built-in is a technology that allows you to stream your favorite entertainment and apps from your phone, tablet, or laptop right to your TV or speakers. Your phone acts as a simple, powerful remote. Just open the mobile apps you already know and love to quickly access your TV shows and playlists. No new log-ins or downloads required. You can use your phone to search, browse, queue and control the projector from anywhere in the home, and keep using it without disrupting what's playing or draining your battery.

Cutting Edge Image Quality



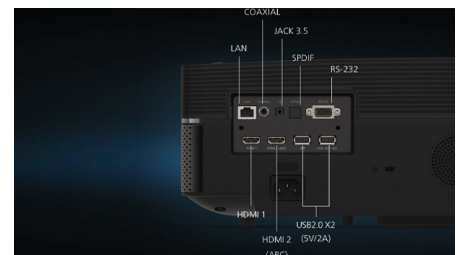
With precise color accuracy and incredible contrast on a max 150-inch screen space, the Screeneo U5 is the world's first projector able to product images compatible with REC709, Dolby Vision, HDR10 and HLG ensuring incredible color reproduction performances up to 12-bit. Eye sensors protection for automatic light dimming.

Dolby Atmos and DTS HD



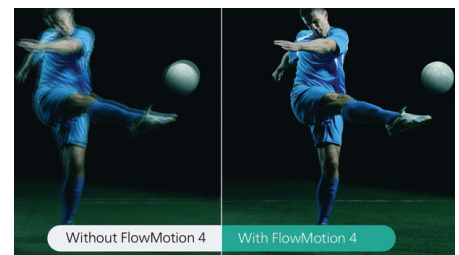
The Screeneo U5 brings you state-of-the-art sound to complete the True 4K Experience with Dolby Atmos and DTS HD.

Enriched Connectivity



Connect all your favorite devices via HDMI (like smartphone, tablet, laptop, gaming console), and play all your videos, pictures, and audio files from a USB thanks to the built-in multimedia player. There is also a 2x HDMI, 2x USB, SPDIF and Jack 3.5 to connect external speakers. The RS-232 port enables home cinema and home automation system.

Flow Motion 4



Our new Flowmotion 4 adds artificial frames between existing picture frames to enables videos to appear at a higher frame rate. Our technology automatically recognizes dynamic pictures and inserts frames to ensure the motions you see are fluid and smooth especially for fast moving images like sport or action movies.

Specifications

Technology

Display technology: DLP Cinema Chip
Light source: Laser (over 25.000 hours)
Brightness: up to 2200 lumens *
Resolution: True 4K UHD (3840x2160 pixels)
Projection image size: up to 150" (380cm)
Recommended usage: 120" max in dark room
Aspect ratio: 4:3 and 16:9
Throw ratio: 0,21:1
Contrast ratio: (FOFO) 1483:1
Focus adjustment: Electrical
Keystone correction: manual or digital *, yes (8 points)
Digital Zoom
Projection modes: front, rear, ceiling
Internal memory: 2GB RAM / 32GB ROM
Eye protection sensor
FlowMotion 4: Yes (MEMC)
Gaming mode

Offset: 140%

REC.709

Operating system: AndroidTV 11 (catalog of Apps)

3D technology: Immersive 3D content enable

Sound

Bluetooth speaker connection
Dolby Atmos / Dolby Decoding
DSP
DTS Decoding
Internal Speaker: 2x10 Watt: 2.2 Channels
Low fan noise: 25dBA (eco mode)

Connection

Wi-Fi: 802.11a/b/g/n/ac 2,4+5GHz
Bluetooth: Connect external speaker, Bluetooth 5.1

Connectivity: 1x 3.5mm jack audio out, 1x Coax, 1x LAN, 1x RS232, 1x SPDIF, 2xHDMI 2.1 (eARC, CEC), 2xUSB 2.0 with 5V2A

Power source

Power supply: 100-250V AC 50/60Hz
 2.8A/1.2A

Logistic data

Dimensions (wxDxH): 485x151x325mm / 19x5.9x12.8inch
Weight: 9.7kg / 21.38 lbs
Standard package includes: Projector, Remote control, 2xAAA battery, Power cable, Quick start guide, Warranty card



* Color brightness (color light output) and white brightness (white light output) will vary depending on projector settings. Color light output measured in accordance with IDMS 15.4; white light output measured in accordance with ISO 21118.

* The terms HDMI, HDMI High-Definition Multimedia Interface, HDMI trade dress and the HDMI Logos are trademarks or registered trademarks of HDMI Licensing Administrator, Inc.