

**Office / PDF viewer**

1

2

**1a YUV/YPbPr**

1

2

3

Source

**1b VGA**

1

2

VGA

Source

VGA	640x480(60Hz)
SVGA	800x600(60Hz)
XGA	1.024x768 (60Hz)

**1c HDMI**

1

2

HDMI

Source

**1d MHL**

1

2

Source

HDMI

AV

Component

VGA

**2**

Source

HDMI

AV

Component

VGA

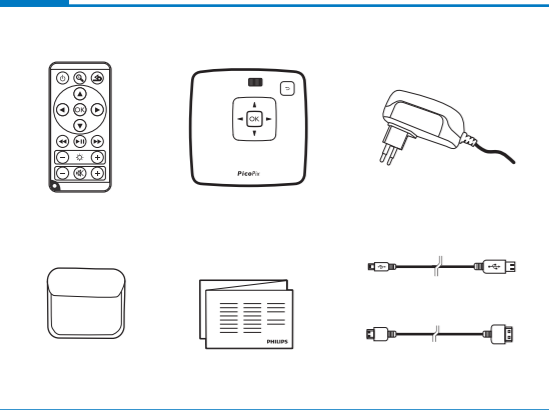
Register your product and get support at  
[www.philips.com/welcome](http://www.philips.com/welcome)

PPX 3410  
 PPX 3414

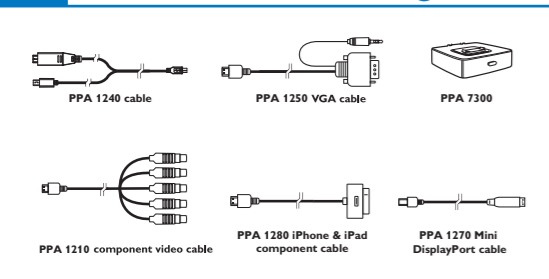


# Quick Start Guide

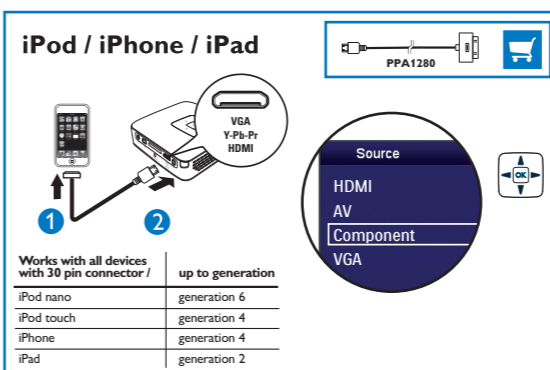
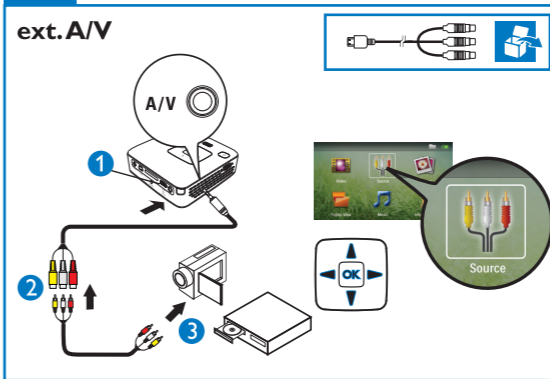
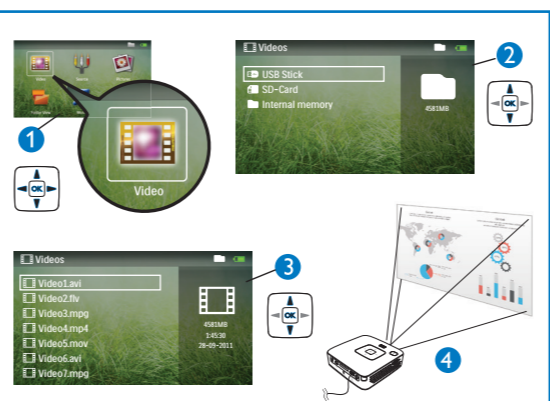
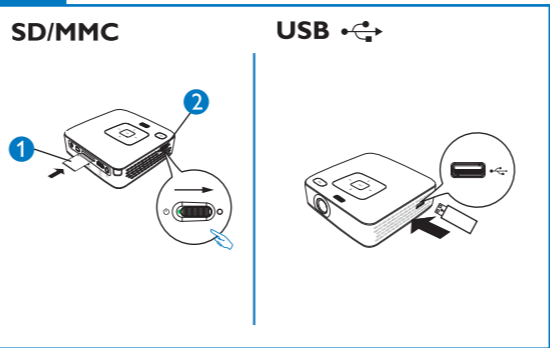
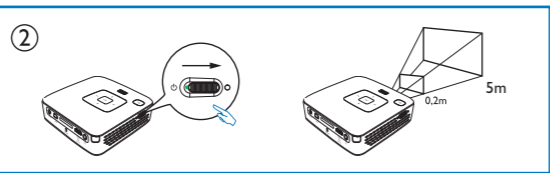
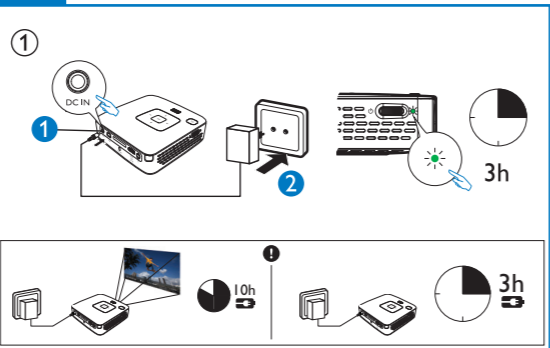
**PHILIPS**



USA / Canada order @ 866 310 0788



1



Works with all devices with 30 pin connector / up to generation	
iPod nano	generation 6
iPod touch	generation 4
iPhone	generation 4
iPad	generation 2



Imported for USA / Importé pour les États-Unis / Importado para Estados Unidos  
P&F USA, Inc.  
PO Box 2248  
Alpharetta, GA 30023-2248  
For further assistance, call the customer support service in your country: 1 866 310 0788

Imported for Canada / Importé pour le Canada / Importado para Canada  
Bigtech  
5990 14th Avenue  
Markham, Ontario L3S 4M4

Pour obtenir de l'aide supplémentaire, communiquez avec le centre de service à la clientèle de votre pays: 1 866 310 0788

For Mexico only / Seulement pour le Mexique / Exclusivo para Mexico  
PROYECTOR DE BOLSILLO (PicoPix)  
Alimentación: 100-240V ~ 50/60Hz 1A. Sat: 12Vcc<math>\rightarrow</math>2A  
Projector: 12Vcc<math>\rightarrow</math>2A

Importador:  
P&F Mexicana, S.A. de C.V.  
AV. La Palma No 6  
Col. San Fernando la Herradura  
Huilquilian, Edo. de Mexico CP 52787  
Tel. 52 (55) 52 69 90 00

Lea cuidadosamente este instructivo antes de usar su aparato.

Sagemcom Documents SAS  
Document Business Unit  
Simplified Joint Stock Company  
Capital 8.479.978€ - 509 448 841 BCS\_Nanterre  
Headquarters: 250, route de l'Empreneur  
92500 Rueil-Malmaison Cedex - FRANCE  
Tel: +33 (0)1 57 61 10 00 - Fax: +33 (0)1 57 61 10 01  
www.sagemcom.com

PHILIPS and the PHILIPS Shield Emblem are registered trademarks of Koninklijke Philips N.V. and are used by Sagemcom under license from Koninklijke Philips N.V.

© 2014 Sagemcom Austria GmbH  
All rights reserved.

PPX3410  
PPX3414  
Quick Start  
253600276-B