

PHILIPS

Screeneo Innovation SA
1131 - Tolochenaz - Switzerland
www.philips.com/welcome
philips.projector.eu@screeneo.com

Euro Repair Center, Europa-Allee-77,
54343 Föhren, Germany

Cooper General Global Services, Inc.
Attn: Screeneo Operation
8501 NW 17th Street, Suite 102 (Docks 32 - 33)
Doral, FL 33126, USA

Philips and the Philips Shield Emblem are registered trademarks of Koninklijke Philips N.V. and are used under license. Screeneo Innovation SA is the warrantor in relation to the product with which this booklet was packaged.

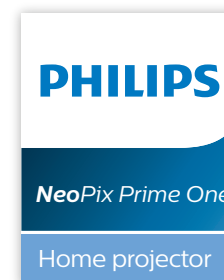
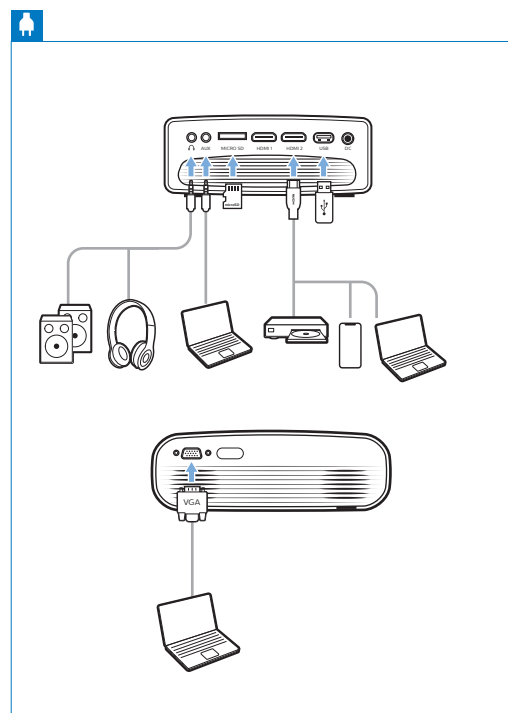
2022 © Screeneo Innovation SA
All right reserved

The terms HDMI, HDMI High-Definition Multimedia Interface, HDMI trade dress and the HDMI Logos are trademarks or registered trademarks of HDMI Licensing Administrator, Inc.

HDMI
HIGH-DEFINITION MULTIMEDIA INTERFACE

CE

FCC ID 2ASRT-NPX535
This device complies with part 15 of the FCC Rules. Operation is subject to the following two conditions: (1) This device may not cause harmful interference, and (2) this device must accept any interference received, including interference that may cause undesired operation.



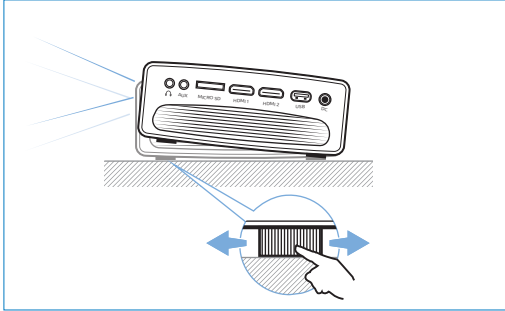
Quick Start Guide

Download the **full user manual** at:
www.philips.com/support and register your product for further support

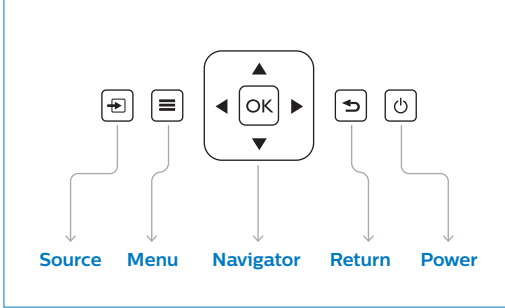


Support Page

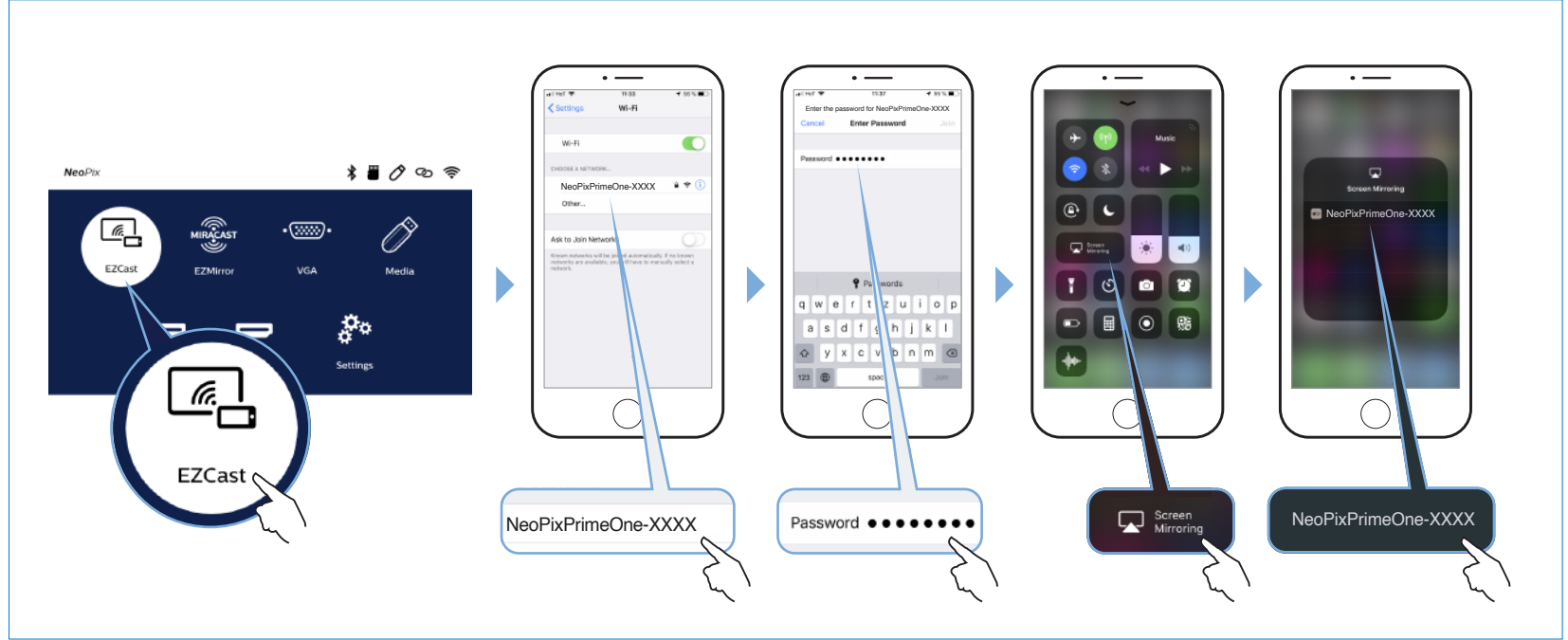
6 Adjustment knob



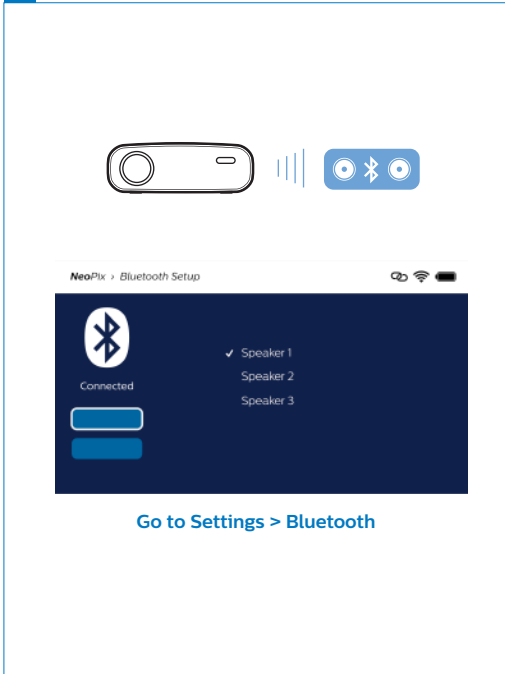
7 Keys



Apple wireless screen mirroring



Bluetooth speaker



Android wireless screen mirroring



Connecting phones/tablets to HDMI

