

PHILIPS

Cordless shaver with
Wet and Dry use

Lady Shaver Series
6000

Floating single foil

10-hr recharge

+4 accessory



BRL136/00



A gentle shave for smooth skin

Experience smooth shave all over your body. The convenient and easy-to-use Philips Lady Shaver Series 6000 is suitable for sensitive areas and provides effortless smoothness while caring for your delicate skin

A skin friendly shave

- Rounded trimmer tips for a skin-friendly shave
- Include skin stretcher cap
- Soft glide cap

Effortless smoothness

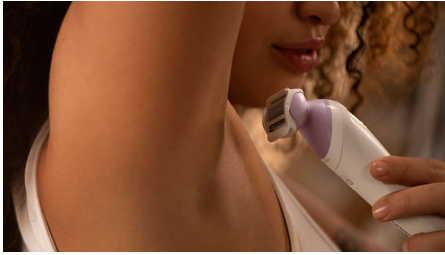
- A smooth and gentle shave
- Floating single foil for an even shave
- Exfoliation glove helps prevent ingrown hairs

Easy to use and control

- Wet & Dry for use in bath or shower
- Up to 40 mins cordless usage
- Ergonomic handle for effortless control
- USB-A charging cable included Power adapter not included

Highlights

A smooth and gentle shave



Philips Lady Shaver Series 6000 is designed to be gentle and comfortable on the skin in different body areas*. 80% of our consumers confirm no razor burns and redness**. Achieve hair-free skin without compromise on skin comfort

Rounded trimmer tips



Rounded trimmer tips in front of and behind the shaving foil keep the shaver gliding smoothly over your skin. 78% of women agree that rounded trimmer tips prevent scratches***

Floating single foil



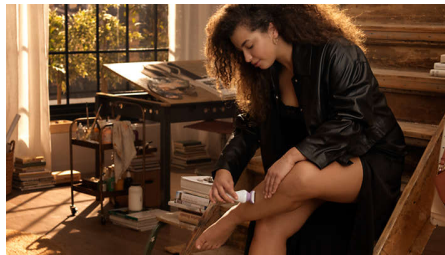
The floating foil glides naturally over your curves and contours, maintaining close contact with your skin for an even shave

Wet & Dry use



For a gentle and comfortable use during your shower or bath routine with anti-slip grip for optimal Wet & Dry use.

Cordless use



With rechargeable battery, Philips Lady Shaver Series 6000 provides up to 40 mins cordless use

Ergonomic S-shaped handle



The ergonomic S-shaped handle is easy to steer for maximum control and better reach with natural and precise movements, all over your body

USB-A charging



At Philips, we drive sustainability in all aspects of product creation. Our ambition is to reduce waste and minimize the number of USB adaptors we put in the market. Should you need an adaptor, please contact us via Consumer Care Center: www.philips.com/support

Skin stretcher cap



Skin stretcher cap tightens skin while shaving for a gentler experience

Exfoliation glove

The use of the exfoliation glove helps prevent ingrown hairs in between shaving

Soft glide cap



Soft glide cap covers the back trimmer on the shaver head for extra safety in curvy areas and glides along the skin for a comfortable shave

Specifications

Accessories

Cleaning brush
Trimming comb
Soft glide cap
Skin stretcher cap
Exfoliation glove

Power

Charging: Rechargeable, 10 hours charging time
Battery Type: NiMH
Usage time: up to 40 minutes

Technical specifications

Voltage: 5V/7.5 W
Material foil: Nickel
Number of shaving foils: 1
USB-A cable
Speed settings: 1

Ease of use

Handle: Ergonomic
Cordless
Wet and dry use
Rechargeable

Performance

Shaving head: Single foil shaver
Skin care features: Rounded trimmer tips

