

PHILIPS

Flexible shaver and trimmer for face and body

Philips OneBlade Pro 360

Rechargeable Li-Ion battery

14-length precision comb

Wet and Dry use

LED digital display



QP6651/30



Trim edge and shave any length of hair effortlessly*

Designed to cut hair, not skin

Philips OneBlade Pro Face + Body trims, edges and shaves any length of hair. You get a blade for your face and one with a skin guard for your body. Forget about using multiple tools. OneBlade does it all.

Easy to use

- Click-on body comb (3 mm)
- 120 min Li-Ion battery
- LED digital display shows status of battery and travel lock
- Blade that doesn't become blunt easily
- Fully waterproof

Comfortable shave

- Unique OneBlade Technology
- Innovative 360 blade
- Shave it off
- Click-on skin guard for sensitive areas

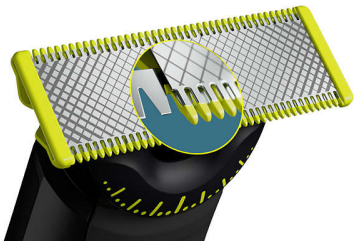
Sharp edges

- Dual-sided blade: designed for precision and control
- Edge it up

Even trim

Highlights

Unique OneBlade Technology



Philips OneBlade has revolutionary technology designed for facial grooming. It can shave any length of hair. Its dual-protection system—a glide coating combined with rounded tips—makes shaving easier and more comfortable. Its shaving technology features a fast-moving cutter (12000 x per min) so it's efficient - even on longer hairs.

Innovative 360 blade



The innovative 360 Blade can flex in all directions to adjust to the curves of your face. The design enables constant skin contact and control. Easily trim and shave hard-to-reach areas — with few strokes and great comfort.*

Trim it down



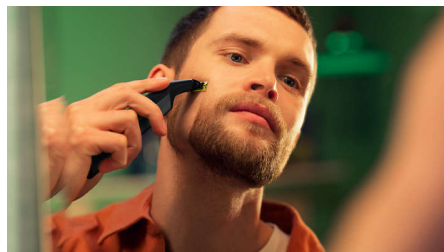
Trim your beard to an even length with the included adjustable precision comb. Dial up one of the 14 lock-in length settings to get everything from a 5 o'clock shadow, to a tight trim, to a longer beard style.

Edge it up



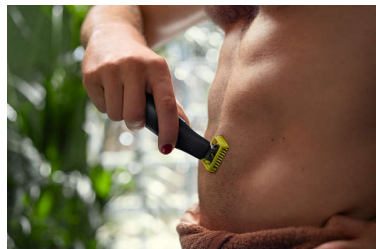
Create precise edges with the dual-sided blade. You can shave in either direction to get great visibility and see every hair that you're cutting. Line up your style in seconds!

Shave it off



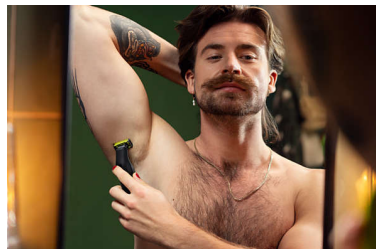
OneBlade doesn't shave as close as a traditional blade - so your skin stays comfortable. Go against the grain and shave off any length of hair easily.

Click-on body comb



Attach the body comb (3 mm) for an easy trim in any direction.

Click-on skin guard



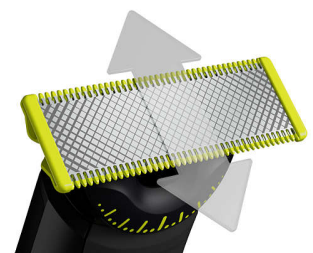
Attach the skin guard for an extra layer of protection on sensitive areas.

14-length precision comb



The versatile precision trimming comb offers length settings from 0.4 to 10 mm, giving you an even trim at exactly the length you want.

Dual-sided blade



OneBlade follows the contours of your face, allowing you to easily and comfortably shave all areas. Use the dual-sided blade to style your edges and create clean lines by moving the blade in any direction.

Blade that doesn't become blunt easily



Stainless steel blade that lasts up to 4 months of use** to keep that fresh feel. An eject icon will appear on the blade when the blade is worn out.

Specifications

Trimming and shaving performance

Shaving system: Contour-following technology, Dual protection system, 360 Blade

Trimming system: Contour-following technology

Accessories

Comb: 14-length comb (0.4 - 10 mm), Click-on skin guard, Click-on body comb

Stand: Charging stand

Extra replaceable blade

Travel case: Travel case

Maintenance: Protection cap

Power

Battery type: Li-Ion

Run time: 120 minutes

Charging: 1 hour full charge

Automatic voltage: 100-240 V

Max power consumption: 5.4 W

Design

Colour: Chrome

Handle: Ergonomic grip and handling

Service

Replacement head: Replace every 4 months**, QP210, QP220, QP230, QP610, QP620, QP410, QP420, QP410, QP420, QP430

2 year warranty

Ease of use

Display: Travel lock indicator, LED digital display

Charging: Rechargeable

Wet and dry use

