

10.0 Warranty and Service

For any information or problem, contact your local Philips dealer or authorized service center. For a list of authorized Philips service centers visit: [www.philips.com](http://www.philips.com) or contact our consumer care at 1800 102 2929 (Toll free) or 1860 180 1111 (standard call rates apply)

10.1 Warranty Card

This apparatus is covered under warranty against any defect due to defective material or workmanship for TWO YEARS from the date of purchase. Should a defect develop during the period of warranty, PHILIPS DOMESTIC APPLIANCES INDIA LIMITED, undertakes to repair the apparatus FREE OF CHARGE through the dealer from whom it has been purchased or at any of the Philips authorized service centres.

The warranty is not valid in case:

1. Apparatus is not used according to user manual.
2. Defects caused by improper or reckless use.
3. Repairs done by persons other than Philips authorized service centre.
4. Modifications of any nature made in the apparatus.
5. Tampered serial number.
6. Incomplete warranty card after purchase.
7. Product if used for commercial purpose (i.e. other than domestic use).
8. Usage of parts not recommended by Philips or those made by other manufacturers.

All consumables and parts susceptible to normal wear and tear are not covered under warranty.

Week/S.No.  
Date of Purchase \_\_\_\_\_  
Dealer's Name: \_\_\_\_\_  
Dealer's Stamp: \_\_\_\_\_  
Customer's Name and Address: \_\_\_\_\_  
Model No.: \_\_\_\_\_  
Dealer's Signature: \_\_\_\_\_



[www.philips.co.in](http://www.philips.co.in)  
100% recycled paper

[www.philips.co.in](http://www.philips.co.in)



Juicer mixer grinder

HL7566/00  
HL7567/00  
HL7568/00  
HL7568/01  
HL7567/01

PHILIPS

1.0 Introduction

Philips brings you a juicer mixer grinder with 3 jars - multipurpose jar, blender jar and chutney jar (only with (HL7568))

Model No.	Juicer	Blender Jar - 1.5L	Multipurpose Jar- 0.75L	Chutney Jar - 0.3L
HL7566/00	✓	NA	NA	NA
HL7567/00	✓	✓	✓	NA
HL7567/01	✓	✓	✓	NA
HL7568/00	✓	✓	✓	✓
HL7568/01	✓	✓	✓	✓

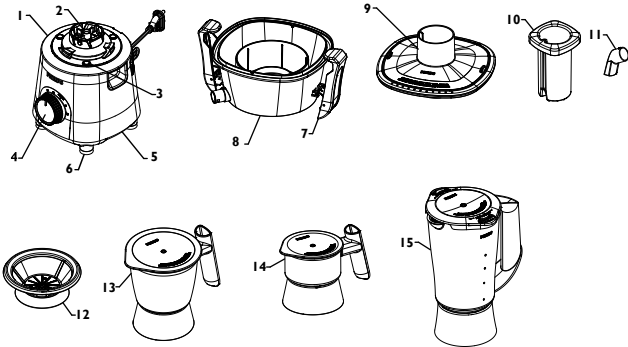
NA= Not Applicable

2.0 General description

1. Base Unit
  2. Coupler
  3. Guide for jar lock
  4. Speed selector knob
  5. Over load protection switch
  6. Anti slip rubber feet
  7. Locks
  8. Juicer chamber
9. Juicer cover
  10. Pusher
  11. Spout
  12. Cutter sieve
  13. 0.75L Multipurpose jar
  14. 0.3L Chutney jar
  15. 1.5L Blender jar

3.0 Technical specifications

Model	Technical Specification	
HL7566/00, HL7567/00, HL7568/00, HL7568/01, HL7567/01	Model No	HL7566/00, HL7567/00, HL7568/00, HL7567/01, HL7568/01
	Voltage	230V AC, 50 Hz
	Wattage	500 W max
	Motor	Universal
	No Load at max. speed 3	1 000 rpm ( approx)
	With Load at max. speed 3	11000 rpm ( approx)
	Speed Control	Rotary speed with 3 Speed and Incher
	Insulation	Class F
	Protection	Class II
	Rating	Ordinary Total rated on time 30 minutes( max ) Continuous ON for 5 minutes ( max ) and OFF for 2 minutes (min.) Rest time 45 minutes



4.0 Important instructions

We recommend that you read the following instructions carefully, before using the appliance.

1. Check if the voltage indicated on the base of the appliance, corresponds to the local electrical mains voltage, before you connect the appliance.
  2. Do not use the appliance when the mains cord, the plug or other components are damaged. The damaged parts should be replaced by the company or service center authorised by Philips.
  3. Always unplug the appliance after use.
  4. Never immerse the motor unit in water or any other liquid. Do not rinse it either.
  5. Always unplug the appliance before reaching in to the jar with your fingers or an object.
  6. Care should be taken while handling the cutter sieve. Never run your fingers on the cutting edges of the cutter sieve. Applying pressure on the sieve while fitting it on the coupler could result into deformation of the sieve and noisy operation.
  7. Do not use the juicer without the juicer cover.
  8. The appliance is not intended for use by persons (including children) with reduced physical, sensory or mental capabilities or lack of experience and knowledge, unless they have been given supervision or instruction concerning use of the appliance by a person responsible for their safety. Children should be supervised to ensure that they do not play with the appliance.
  9. Always ensure that speed selector knob is at position before fixing accessories.
  10. Do not operate the mixer without the dome or lid in place or with an empty jar.
  11. Handle the blades carefully. Wash them under running water and do not rub by hand.
12. Do not use juicer mixer grinder on wet surface.
  13. Do not run juicer mixer grinder continuously for more than 30 minutes.
  14. Keep juicer mixer grinder away from gas burner, electric hot plate or similar appliances
  15. This appliance is strictly for household use.
  16. Do not drop the main unit or jars.
  17. Never use accessories or parts not recommended by Philips or those made by other manufacturers else the warranty will become invalid.
  18. Do not use the jars as storage containers.
  19. Do not leave unit unattended while in operation.
  20. Use only crushed ice in the blender jar.
  21. Do not use the appliance if the sieve is damaged.

5.0 Using the product

- 1. How to fit jar to base unit**

Fill the jars with ingredients to the appropriate level and close the lid. Ensure that the lock of the jar fits the slot of the base unit. Rotate the jar clockwise until it is locked.
- 2. How to assemble juicer**

  1. Place the Juice chamber on top of the base unit such that the projection given in the Juice chamber fits in the groove provided in the rear side of the base unit.
  2. Place the cutter sieve on the coupler and fix it till it settles in the grooves with click sound.
  3. Place the Juicer cover on top of the Juice chamber such that the two projections provided on top of Juicer cover comes in the left and right side of the product.
  4. Place the locks of juice chamber on the projection on the Juicer cover and then press the bottom part of the lock till it locks with click sound.

Quick Clean Guide for Juicer:

1. Ensure all parts are cleaned immediately after use.
2. Disassemble the Juicer assembly by removing the locks and then remove the pulp. Clean the Juicer and cover individually by using a soft brush or sponge under running water. Wipe the motor unit with a wet cloth. Note that spout can be detached.
3. Place cutter sieve under running water and clean using a soft brush. 'Do not rub with fingers'

7.0 Overload protection

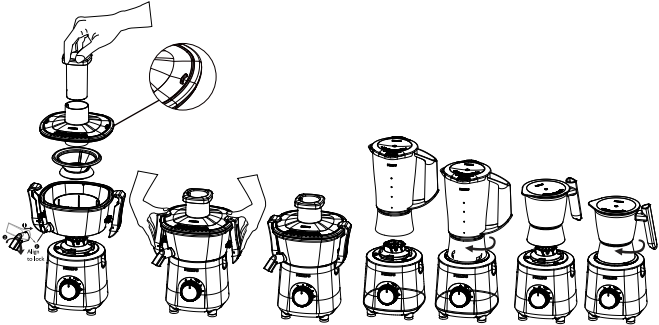
Your juicer mixer is fitted with an automatic power shut off mechanism to avoid motor burning due to overloading. If the mixer stops due to overloading, the red knob at the bottom of the base unit will come out. Switch off the mixer. Remove excess load from jar. Wait for 2-3 minutes. Press red knob and start mixer again.

**Note: Over Load Protector is not present in HL7566/00**

8.0 Standard recipes

No.	Recipe	Quantity	Time
1	Urad daal	175g daal+400ml water (soak for 5-6 hrs).Add 25ml water	1.15 min
2	Garam masala	150g of assorted spices roasted and cooled	2.0 min
3	Wet masala	150g onion + 100g tomato	1.5 min
4	Ginger garlic paste	50g ginger + 50g garlic	1.5 min
5	Milk shake	300ml milk + 50g ice-cream (optional) + 30g strawberry crush (sugar as per taste)	1.0 min
6	Tomato puree	250g medium sized tomatoes cut in 4s	1.5 min
7	Lassi	250g curd + salt/sugar (as per taste) + crushed ice	30 sec

For wet/dry grinding in HL 7567 series and wet/dry/chutney grinding in HL 7568 series use speed I juicing and speed II for 10-15 seconds, thereafter use speed III till you finish grinding. Remove the plug from the socket after use.



5. Insert the spout in the projection and rotate anticlockwise to fix it. Use the pusher by placing it over the chute to push the ingredients being fed during juicing.

3. How to assemble the blender jar

Fill the ingredients in the blender jar. Close the lid in such a way that the window of the jar coincides with the spout. Now lock the jar to the base unit.

4. Multipurpose Jar/ Chutney Jar

After assembling the jars on the base unit, start with speed I JUICING and gradually move to higher speeds as required. Stop when you are satisfied with the fineness of the powder or paste.

**For coconut chutney preparation in chutney jar, it is highly recommended to cut the coconut pieces into 1 In x 0.5 In and then grind it. For best results, use not more than 40g coconut followed by other ingredients in one batch of grinding.**

5. Juicer

Always use juicer at speed JUICING. Fruits to be inserted should be cut into pieces which can pass through the food chute. Use the pusher for pushing the fruits through the food chute for juicing. For continued juicing extraction, repeat the above mentioned procedure

**\*\*\*For best results It is recommended to use 500g of fruit for one batch of juicing\*\***, after which the sieve and juicer chamber needs to be cleaned for next extraction

**\*\*The juicer is not suitable for processing very hard and/ or fibrous/ starchy/ too soft fruits or vegetables such as sugarcane, aamla, berries, papaya, guava, banana, chikoo, mango and the likes**

**\*\*\*When making mixed fruit or vegetable juice, juice the softer fruit/ vegetable first followed by the harder fruit/vegetable.**

**\* Example while making mix fruit juice, juice orange first followed by apple. Similarly while making mixed vegetable juice, put tomato first, followed by carrots.**

**\* If you want to add mint leaves or ginger to the juice, add it along with another fruit or vegetable for maximum output. For instance, if you want to add mint, add it along with carrots or tomato.**

**\* You may remove the seeds from citrus fruits as they may result in a bitter taste to the juice when crushed**

9.0 Trouble shooting

	Problem	Cause	Solution
1	Appliance does not work.	No electricity supply.	Ensure that the plug is plugged in well.
2	Appliance suddenly stops working while in use.	The appliance is equipped with an "Over Load Protector" (OLP) switch. If appliance overheats, it automatically cuts off power supply. <b>Note: Over Load Protector is not present in HL7566/00</b>  There may be fruit pieces stuck in the juicing unit or the sieve	Unplug the appliance and let it cool for 2-3 minutes. Remove jar from base unit. At the bottom of base unit there is a red coloured switch (OLP). Reset OLP by pressing it. Put plug back into wall socket and switch on appliance again (see heading "Overload Protection").  Unplug the appliance, remove the juicer lid and remove any pieces of fruit that may have been lodged in the juicing unit or the sieve
3	Blade unit is blocked.	The quantity being processed is probably too large.	Switch off appliance. Remove ingredients that are blocking the blade unit.
4	Appliance gives an unpleasant smell during first few times of use.	This is normal for the first few times.	If appliance continues to smell after using a few times: <ul style="list-style-type: none"><li>• Ensure that jars are clean and there are no ingredients stuck inside it.</li><li>• Ensure that appliance has been assembled correctly.</li></ul>
5	Appliance makes lot of noise.	Jars have not been properly locked.  Blade is loose.  The sieve may not be properly fixed on the unit  Clogging of sieve with pulp	Make sure jar has been properly and tightly locked.  Remove ingredients from jar and tighten the blade in anti-clockwise direction with spatula.  Unplug the appliance, remove the juicer cover and fix the sieve properly on the base unit  Unplug the appliance, remove the sieve, clean and reuse.
6	There are fumes from the appliance.	Appliance may have been used for too long.	Switch off appliance and let it cool for 60 minutes.
7	Unsatisfactory grinding/ blending/ mixing performance.	Incorrect jar selection.  Large size of ingredients.	Use correct jar as per the application.  Cut ingredients into appropriate size.
8	Leakage from jar lid.	<b>Gasket has not been assembled properly</b>	Unplug appliance. Remove jar from base unit. Remove lid to check if gasket has been assembled correctly.

In case these measures do not work, contact the nearest PHILIPS service center or call at customer care numbers. 1800 102 2929 (Toll free) or 1860 180 1111