





# Table of Contents

<b>1 Important</b>	<b>4</b>	<b>10 Ordering accessories</b>	<b>21</b>
Electromagnetic Fields (EMF)	6	<b>11 Recycling</b>	<b>22</b>
<b>2 Introduction</b>	<b>7</b>	<b>12 Guarantee and service</b>	<b>22</b>
Overview	8	<b>13 Troubleshooting</b>	<b>23</b>
Control panel	9	<b>14 Important additional information</b>	<b>26</b>
<b>3 Cleaning and Sterilising</b>	<b>10</b>		
<b>4 Assembling</b>	<b>11</b>		
<b>5 Using your pump</b>	<b>14</b>		
Before using the pump	14		
To begin pumping	14		
To pause pumping	18		
Storing your breast milk	18		
Feeding your baby with expressed breast milk	19		
<b>6 Hints to help you succeed</b>	<b>20</b>		
<b>7 When to express milk</b>	<b>20</b>		
Right times of the day to express your milk	21		
<b>8 Storage</b>	<b>21</b>		
<b>9 Compatibility</b>	<b>21</b>		

# 1 Important

Read this user manual carefully before using your Philips Avent twin electronic breast pump, and save the user manual for future reference. You can also find this user manual at Philips website: [www.philips.com/support](http://www.philips.com/support).

## Warning

- Always unplug from the power socket immediately after use.
- Do not use the breast pump while bathing.
- Do not place or store the breast pump where it can fall or be pulled into a bath or sink.
- Do not place or drop the pump motor, silicone tube, and power adapter into water or other liquids.
- Do not reach for a product that has fallen into water. Unplug from the power socket immediately.
- Children should be supervised to ensure that they do not play with the appliance. Place the appliance out of reach from children and pets.
- Before each use, check the breast pump, including the power adapter for signs of damage. Never operate the breast pump if it has a damaged plug, not working properly, has been dropped or damaged, or has been submerged in water.
- The power cord is irreplaceable. Discard it if is damaged, including the power adapter.
- Only use accessories recommended by Philips Avent.
- Only use the power adapter supplied with the product.
- Make sure the breast pump, including the power adapter, is not exposed to extreme heat or placed in direct sunlight.
- Do not use the breast pump outdoors.
- There are no user serviceable parts inside the pump. Do not attempt to open, service, or repair the breast pump yourself.
- The parts of the pump which come directly into contact with milk are personal care items, and should not be shared between mothers.
- Do not attempt to remove the pump body from the breast while under vacuum. Switch the breast pump off, and break the seal between your breast and the pump funnel with your finger, then remove the pump from your breast. You can also pull off the silicone tube from the

motor or the cap to release the vacuum.

- Never use while pregnant as pumping can induce labor.
- Never use when sleepy or drowsy.
- This appliances can be used by persons with reduced physical, sensory or mental capabilities or lack of experience and knowledge if they have been given supervision or instruction concerning use of the appliance in a safe way and if they understand the hazards involved.
- This appliance shall not be used by children.
- If expressing becomes painful, stop and consult your breast feeding advisor or healthcare professional.
- Do not use the breast pump in the presence of flammable anaesthetic mixtures with air, with oxygen, or with nitrous oxide.
- Although the breast pump is compliant with applicable EMC directives, it may still be susceptible to excessive emissions and/or may interfere with more sensitive equipment.
- Make sure not put any products on the pump motor, like pillow, blanket etc. Please make sure pump motor work in well

ventilation and heat dissipation condition.

### **Caution**

- The product should not be left unattended when plugged into a power socket.
- Never drop or insert any foreign object into any opening or the silicone tube.
- Do not shorten the silicone tube.
- Before you connect the breast pump to the power, make sure that the voltage of the product corresponds to the local power voltage.
- Wash, rinse, and sterilise the appropriate pump parts before each use.
- Do not use antibacterial, abrasive cleaners, or detergents when cleaning breast pump parts.
- Never put the breast pump motor in water or steriliser, as you can cause permanent damage to the pump.
- If the vacuum generated is uncomfortable or cause pain, switch off the breast pump, break the seal between the breast and the pump funnel with your finger, and then remove the pump from your breast. You can also pull off the silicone tube from the motor or the cap to release the vacuum.

- Do not continue pumping for more than five minutes at a time if no result is achieved.
- Never use any accessories or parts from other manufacturers or that Philips Avent does not specifically recommend. If you use such accessories or parts, your guarantee becomes invalid.
- Do not use the breast pump if the silicone diaphragm appears to be damaged or broken. Replace the silicone diaphragm. See chapter “Guarantee and service” for information on how to obtain replacement parts.
- Never use feeding teats as dummies, pacifiers, or soothers. Make sure that the teething baby does not bite the teat too long. The continuous and prolonged bite will damage the teat. For hygiene reasons, replace teats after three months of use. Use only Philips Avent teats and bottles together.

## Batteries

This appliance can use both 1.5V AA non-chargeable batteries and rechargeable batteries.

For instructions on how to replace the batteries see chapter ‘Assembling’.

- **Rechargeable batteries are to be removed from the appliance before being charged.**
- Different types of batteries or new and used batteries are not to be mixed.
- Batteries are to be inserted with the correct polarity.
- Exhausted batteries are to be removed from the appliance and safely disposed of.
- If the appliance is to be stored unused for a long period, the batteries should be removed.
- The supply terminals are not to be short-circuited.
- Non-rechargeable batteries are not to be recharged.

---

## Electromagnetic Fields (EMF)

This Philips appliance complies with all applicable standards and regulations regarding exposure to electromagnetic fields.

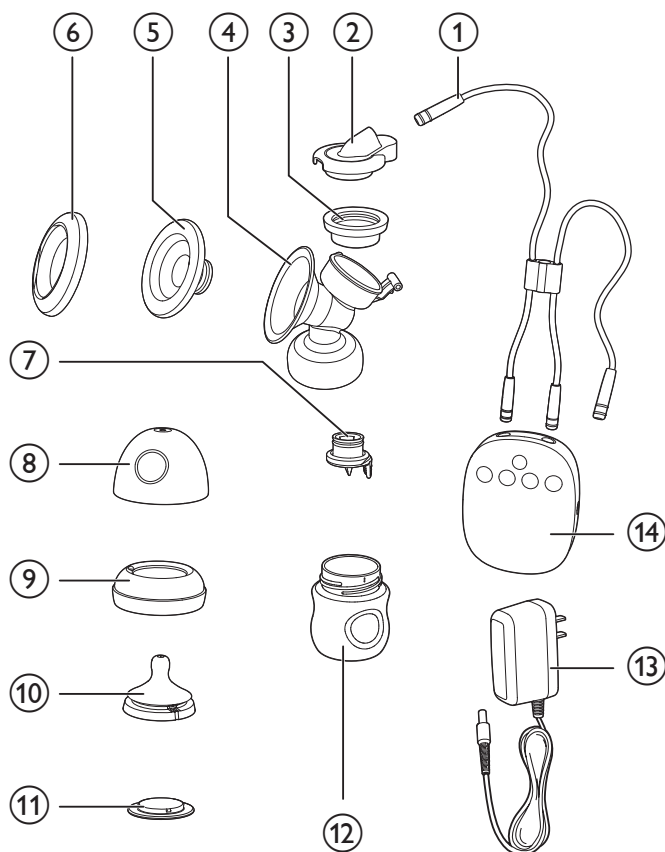
## 2 Introduction

Congratulations on your purchase and welcome to Philips Avent! To fully benefit from the support that Philips Avent offers, register your product at **[www.philips.com/ welcome](http://www.philips.com/welcome)**.

The Philips Avent breast pump provides comfort, convenience for effective expression. It has an “Natural suckling” expression kit, an innovative funnel to mimic natural suckling and compress your nipple and areola, to make whole expression more comfortable and effective. Philips Natural Rhythm Technology mimics the baby's natural sucking rhythm, from fast and light to slow and deep, helping mothers to lactate and pump more comfortably and effectively in short time. The intuitive digital display design has automatic memory and pause functions, and the LED backlight is designed for easy operation at night.

Doctors recommend that breast milk is the best nutrition for babies during the first year, combined with solid food after the first six months. Your milk is specially adapted to your baby's needs and contains antibodies which help protect your baby against infection and allergies. Your electric breast pump will help you breast-feed longer. You can express and store your milk so that – whether you are out for a few hours, taking a well deserved rest, or back at work – your baby can still enjoy the benefits of your breast milk, even if you cannot be there to give it yourself. As the pump is easy to assemble, silent and discreet, you can take it with you anywhere, allowing you to express milk at your own convenience and maintain your milk supply.

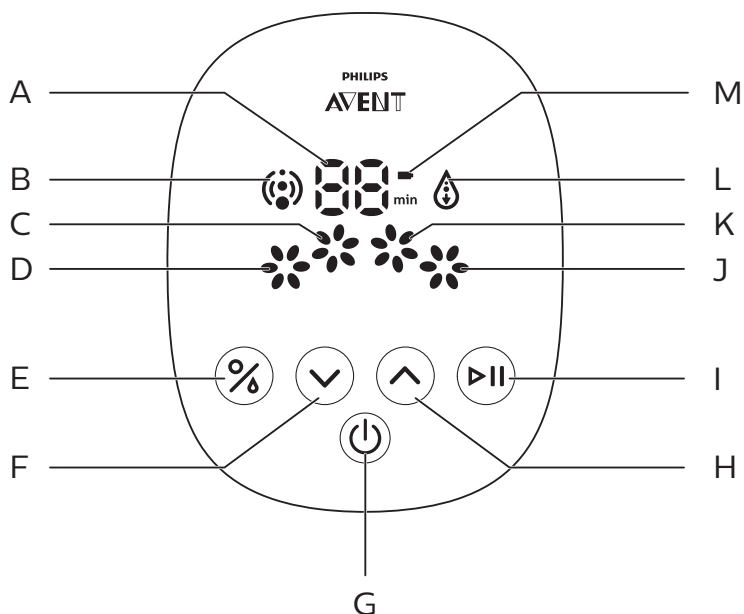
## Overview



①	Silicone tube	⑧	Dormal cap (x2)
②	Cap (x2)	⑨	Screw ring (x2)
③	Silicone diaphragm (x2)	⑩	Teat (x2) (0m+)
④	Pump body (x2)	⑪	Sealing disc (x2)
⑤	Massage cushion (x2)	⑫	Bottle (x2) (125ml)
⑥	Pump cover (x2)	⑬	Power adapter
⑦	Valve (x3) (one for back up)	⑭	Pump motor



## Control panel



A	Timer counting indicator	H	Level up button
B	Stimulation indicator	I	Pause/play button
C	Level 2 indicator	J	Level 4 indicator
D	Level 1 indicator	K	Level 3 indicator
E	Mode selection button (selecting the stimulation and expression mode)	L	Expression indicator
F	Level down button	M	Battery indicator
G	Power button		



### Note

- The battery indicator flashes only when in low battery. We recommend you to change the battery as soon as possible.

### 3 Cleaning and Sterilising

Before you use your breast pump for the first time and for every time, you must disassemble, wash, and sterilise all the breast pump parts that come into contact with your breast milk. (see ③, ④, ⑤, ⑥, ⑦, ⑫ in Overview chapter)

Before you use the bottle and its parts for the first time and for every time, you must also disassemble, wash and sterilise. (see ⑧, ⑨, ⑩, ⑪ in Overview chapter)

#### Caution

- Never wash or sterilise the pump motor, the silicone tube, the cap, and the power adapter. These components do not come into contact with your breast milk. You can wipe those parts clean with a soft cloth.

You can also use the dishwasher (top rack only) or hand wash in warm, soapy water, and then rinse thoroughly. We recommend you to sterilise all the parts contacting with breast milk in our Philips Avent steam steriliser, or by boiling for 5 minutes. To prevent irreversible deformation or damage to the product due to prolonged exposure to the high-temperature bottom or wall, the amount of water should be sufficient to submerge all the components.

#### Caution

- Take care when cleaning the valve and the silicone diaphragm. If it gets damaged, your breast pump will not function properly.
- To clean the valve, rub it gently between your fingers in warm soapy water. Do not insert objects as this may cause damage.

## 4 Assembling

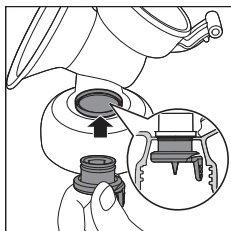
To assemble the pump, follow the steps below.



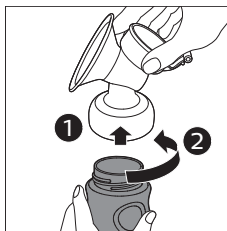
### Note

- Make sure that you clean and sterilise the pump as instructed in this user manual.
- Make sure that you assemble the pump correctly as instructed in this user manual.
- To avoid leakage, remove the residue around the rim before assembling. Put the bottle onto the pump body, and do not over-tighten.
- Wash your hand thoroughly before you take sterilised components.

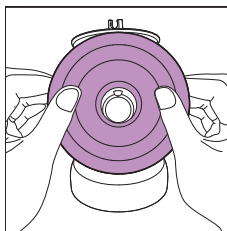
- 1** Insert the valve into the pump body from underneath.



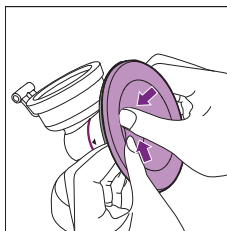
- 2** Put the bottle onto the pump body and turn it anticlockwise to fix it. Do not over-tighten when assembling the bottle to the pump body.



- 3** Insert the massage cushion into the pump funnel and press the rim to ensure a perfect seal.



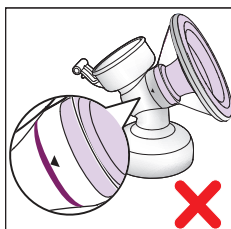
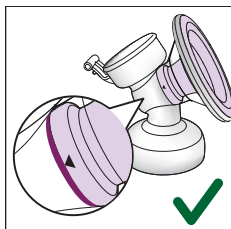
- 4** You can press the end of the massage cushion with your fingers to help it lock to the line indicated by the arrow on the end-position of the funnel.



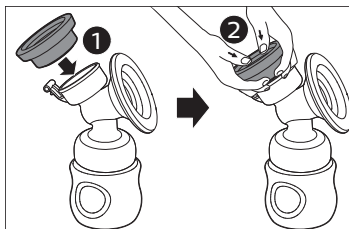


## Caution

- To ensure the effect of pumping, make sure that the end of the massage cushion is properly locked to the line indicated by the arrow on the end-position of the funnel.



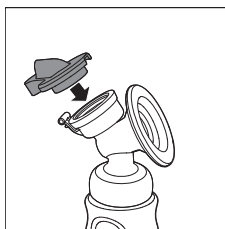
- 5 Put the silicone diaphragm onto the pump body and press the rim to make sure a perfect seal.



## Tip

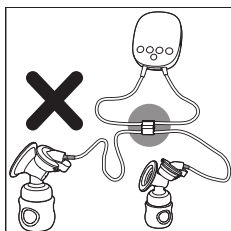
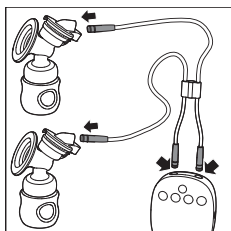
- You may find it easier to assemble while it is wet.

- 6 Firmly push the cap onto the silicone diaphragm, so that it sits securely on top of the silicone diaphragm.

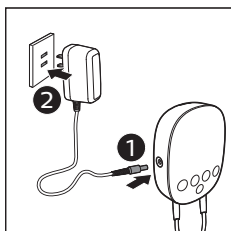


- 7 Repeat above steps 1-6 for another pump body.

- 8** Connect the silicone tube to the cap and the motor firmly.



- 9** Connect the power adapter to the pump motor, and then insert the power plug to the power socket.

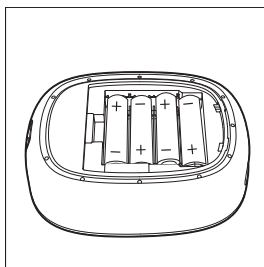


**Note**

- Only use the adapter provided with this product. Do not use other adapter.

**Tip**

- For battery operation, open the rear cover of the motor unit in the direction indicated by the marks. Insert four new 1.5V AA alkaline batteries into the battery housing (We do not recommend to use carbon-zinc batteries). Reattach the rear cover to the motor unit. We recommend you to use rechargeable batteries for long time use.



**Note**

- If you have inserted batteries in the battery housing of the pump motor and plug in the adapter, the breast pump will run from the main power supply. The batteries cannot be charged in the unit.

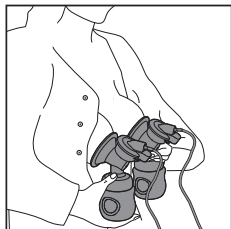
## 5 Using your pump

### Before using the pump

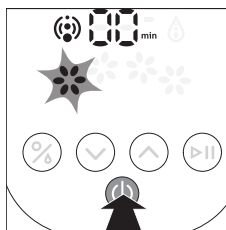
- Wash your hands thoroughly, and make sure your breasts are clean. Gently squeeze a little milk from each nipple to make sure that milk ducts are not blocked.
- Make sure you follow the steps in “Cleaning and sterilising” and “Assembling” chapters to clean, sterilise, and assemble the breast pump.
- Relax in a comfortable chair. Make sure that you have a glass of water nearby.

### To begin pumping

- 1 Press the assembled pump bodies against your breasts. Make sure that your nipples are centered, so that the massage cushion creates an airtight seal. Make sure that no air escapes; otherwise there is no suction.



- 2 Press the power button (⏻) to switch on your pump.

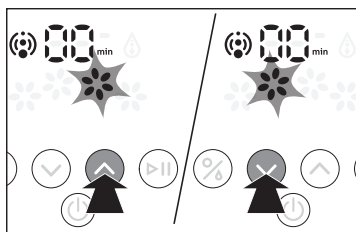


- The display panel lights up for 1 second. The breast pump automatically starts up in stimulation level 1 mode in the first time usage, and the stimulation indicator lights up. The appliance has the memory function to remember the levels for your both stimulation and expression in your latest usage.
- You begin to feel the suction on your breast and the massage of the massage cushion on your nipple.

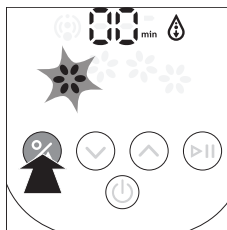
## Note

- The timer starts when the appliance is power on. The timer indicator displays 01 after the appliance has been power on for 1 minute. The unit is minute.
- The timer will show total breast pumping time, pause time does not count in.
- If the timer displays over 99 minutes (when it comes to 100 minutes), the machine will shut down automatically.

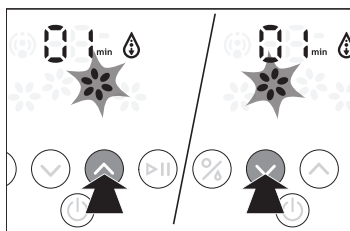
- 3** You can choose your desired stimulation level to stimulate milk by pressing the level up (⤴) and level down (⤵) buttons. You can press the level up button to deeper the suction. Press the level down button to lower the suction. There are altogether 4 stimulation levels.



- 4** Once your milk starts flowing, you can press the mode selection button (Ⓢ) to switch to the expression mode.



- 5** After switching to the expression mode, you can choose your desired expression level by pressing the level up (⤴) and level down (⤵) buttons. You can press the level up button to deeper the suction. Press the level down button to lower the suction. There are altogether 4 expression levels.

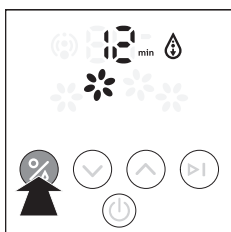


- The expression indicator lights up instead of the stimulation indicator.

## Note

- Do not worry if your milk does not flow immediately. Relax and continue pumping.
- Do not continue pumping for more than 5 minutes at a time if you do not succeed in expressing any milk. Try to express at another time during the day.
- If the process becomes very uncomfortable or painful, stop using the pump and consult your breast feeding advisor.
- Stimulation and expression levels match to the number of the flowers lighting up. That is, 1 flower lighting up means level 1, and 2 flowers lighting up means level 2.
- When needed, you can also use stimulation mode to do expression.

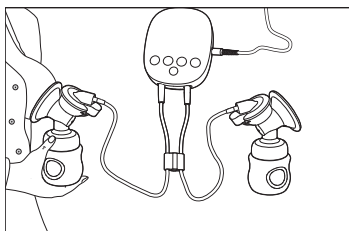
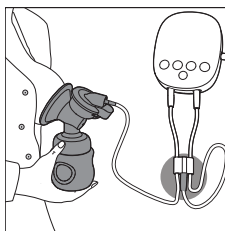
- 6** During expression, you can switch between the stimulation mode and expression mode by pressing the mode selection button (%) for better expression.



## Note

- You do not need to use all stimulation/expression levels, only use the levels that are comfortable for you.
- Place the pump motor on a stable and flat surface, to avoid any accidental drops when in use. If not, this may pull the pump body off from the breast and cause injury.

- 7** The twin electric breast pump enables you to express milk from both breasts at the same time. However, you can also use the appliance to express from one breast. To express from one breast, you need to disconnect one silicone tube from the cap, and insert it into the connecting hole, or you can take the pump from one breast. Other operations are just in the same way.





## Note

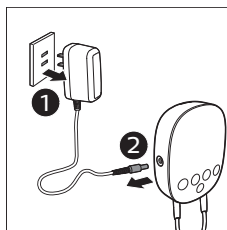
- If you regularly express more than 125ml per session on each breast, you can use a 260ml/9fl oz Philips Avent bottle to prevent overfilling and spillage.
- If there is no operation on this appliance (such as pause, change stimulation level and expression level) for 30 minutes (including in pause), the appliance will shut down automatically.

- 8** When you have finished expressing, press the power button (⏻) to switch off the breast pump and carefully remove the pump body from your breast.

## Tip

- After switching off the breast pump, break the seal between the breast and the pump funnel with your finger, and then remove the pump from your breast.

- 9** Disconnect the power plug to the power socket, and then disconnect the power adapter from the pump motor.



## Tip

- In order to protect the appliance, please always shut down the appliance by pressing the power button instead of plugging off.

- 10** Unscrew the bottles from the pump bodies ready for feeding/storage. Clean the other used parts of the breast pump according to the instructions in chapter 'Cleaning and sterilising'.

## Caution

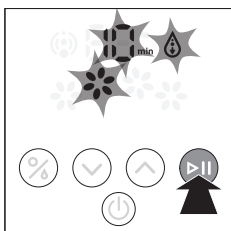
- Never tilt the breast pump when the milk has reached the maximum line on the bottle. Replace with a new bottle before re-pumping to avoid spillage.
- After expression, please take off the bottle from pump body immediately, then store the bottle with sealing disc.

## To pause pumping

This breast pump has a pause function, and you can press the pause button (⏸) to pause pumping if at any time the suction becomes uncomfortable, there is a need to change the bottle, reposition the pump on the breast, or a short rest.

- 1 When the breast pump is in a particular stimulation or expression mode, press pause button (⏸) will pause the pumping.

↳ The timer indicator, level indicator, and stimulation/ expression indicator will flash to remind you of the pausing status.



### Note

- When the breast pump is in pause, level down/level up button and stimulation/ expression switch mode button will lose their functions. Only pausing button and power button still work.

- 2 Press the pause button (⏸) again to continue the pumping with the stimulation or expression mode selected before pausing

## Storing your breast milk

### ! Caution

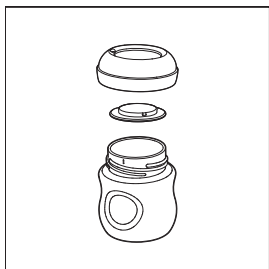
- Never refreeze breast milk.
- Do not mix fresh breast milk to already frozen milk.
- Always discard any left over milk at the end of a feed.

### = Note

- Only store breast milk collected with a sterile pump.

- 1 After you have expressed your milk, unscrew the pump bodies from the Philips Avent bottles.
- 2 Store expressed milk in cleaned and sterilised Philips Avent bottles fitted with sealing discs. Put them in the fridge or freezer immediately
  - You can store expressed breast milk in the refrigerator for up to 48 hours (not in the door) or in the freezer for up to 3 months.

- Label the bottles with date and time.
- Use up the older milk first.



Philips Avent Natural Bottle provides:

- Natural latch on. The wide breast shaped teat makes it easy for your baby to combine breast and bottle feeding.
- Unique comfort petals. Petals inside the teat increase softness and flexibility without teat collapse.
- Advanced anti-colic valve. Innovative twin valve design reduces colic and discomfort by venting air into the bottle and not baby's tummy.

## Feeding your baby with expressed breast milk

- If you use Philips Avent bottle to store breast milk, make sure to remove the sealing disc and assemble the Philips Avent teat for feeding.



- Place the frozen breast milk in the refrigerator to defrost overnight. In case of an emergency, you can defrost the milk in a bowl of hot water. Use up the defrosted breast milk within 24 hours after defrosting.

About heating up the breast milk:

- Heat the bottle with in a bowl of hot water, or using Philips Avent bottle and baby food warmer to safely heat up the milk.



### Caution

- Remember! Always check milk or food temperature before feeding.
- Never heat breast milk in a microwave as this may destroy valuable nutrients and antibodies. In addition, the uneven heating may cause hot spots in the liquid which could cause burns to the throat.
- Never immerse a frozen bottle in boiling water to avoid crack or split.

- Warmth and relaxation can encourage milk flow. Try expressing after a warm bath or shower.
- Try expressing from one breast while your baby is feeding from the other, or continue expressing just after a feed.
- Repositioning the pump on the breast from time to time can help stimulate your milk flow.



### Tip

- Practice with your pump to find the best pumping techniques for you. If the process becomes painful, stop and consult your breast-feeding advisor.

## 6 Hints to help you succeed

The twin electronic breast pump is easy to use. Take some practice, and you will soon get used to expressing milk.

- Choose a time when you are not rushed nor interrupted easily.
- Having your baby or a photograph of your baby nearby can help encourage your milk to flow.
- Before expressing milk, place a warm towel onto your breast, and lightly massage for a few minutes. This encourages milk flow, and ease the pain of your breast.

## 7 When to express milk

If possible, wait until your milk supply and breast-feeding schedule are well established, unless told otherwise by your doctor or breast-feeding advisor. The exceptions are:

- If you are expressing milk for your baby to be given in hospital.

- If your breasts are engorged (painful or swollen). You can express a small amount of milk before or between feeds to ease the pain, and to help your baby latch on more easily.
- If you have sore or cracked nipples and you may wish to express your milk until they are healed.
- If you are separated from your baby and wish to continue to breast-feed when you are reunited. You should express your milk regularly to stimulate your milk supply.

---

## Right times of the day to express your milk

- Early in the morning when your breasts are full, just before or after your baby's first feed.
- After a feed, if your baby has not emptied both breasts.
- Between feeds or in a break if you have returned to work.

## 8 Storage

- Keep the breast pump out of direct sunlight as prolonged exposure may cause discoloration.
- Store the breast pump and its accessories in a safe and dry place.

## 9 Compatibility

The Philips Avent electric breast pump is compatible with Philips Avent bottles in our range. When you use other Philips Avent bottles, use the same type of teat that was supplied with that bottle. For details on how to assemble the teat and general cleaning instructions, refer to the user manual on our website, [www.philips.com/support](http://www.philips.com/support).

## 10 Ordering accessories

To purchase accessories for this appliance, please visit our online shop at [www.shop.philips.com/service](http://www.shop.philips.com/service). If the online shop is not available in your country, go to your Philips dealer or a Philips service centre **0800 231 099**. If you have any difficulties obtaining accessories for your appliance, please contact the Philips Consumer Care Centre in your country. You find its contact details in the worldwide guarantee leaflet.

## 11 Recycling

Do not throw away the product with the normal household waste at the end of its life, but hand it in at an official collection point for recycling. By doing this, you help to preserve the environment.

Follow your country's rules for the separate collection of electrical and electronic products. Correct disposal helps prevent negative consequences for the environment and human health.

## 12 Guarantee and service

Philips guarantees its products under correct usage for a period of two year after the date of purchase. If any defect due to faulty materials and workmanship occurs within this two year guarantee period, Philips will repair or replace the product at its expense. For repair or replacement, make sure to provide convincing proof, for instance by means of a receipt, that the day on which service is claimed is within the guarantee period.

The guarantee only covers the breast pump motor and power adapter. It does not cover non-electrical parts, accessories and consumable parts. The guarantee does not cover shipping and handling fees, and on-site services fees either. If you need service or information, or if you have a problem, please contact the Philips Avent Consumer Care center. Website: [\*\*www.philips.com/support\*\*](http://www.philips.com/support).

# 13 Troubleshooting

This chapter summarises the most common problems you could encounter with the appliance. If you are unable to solve the problem with the information below, contact the Consumer Care Centre **0800 231 099** in your country or visit us online at **[www.philips.com/support](http://www.philips.com/support)**.

Problem	Solution
Lack of suction.	<ul style="list-style-type: none"><li>• Check that all components are assembled correctly and that the valve is in positioned correctly.</li><li>• <a href="#">Make sure that the massage cushion is locked to the end-position of the funnel.</a></li><li>• Make sure that the cap, the diaphragm, and the massage cushion are fitted securely to the pump body and a perfect seal is created.</li><li>• The air pressure in your region is too low, this may affect the suction.</li><li>• Make sure the silicone tube is firmly connected to the cap and the motor, without twisting.</li></ul>
No milk being expressed.	<ul style="list-style-type: none"><li>• Make sure the pump is assembled correctly, and the suction is created.</li><li>• Relax and try again; as expression may improve with practice.</li><li>• Refer to the “Hints to help you succeed” section.</li></ul>
Pain in the breast area when expressing.	<ul style="list-style-type: none"><li>• You may be pumping too hard. You do not need to use all the suction that the pump can generate but the comfortable levels. Press the level down button to lower down the suction intensity.</li><li>• Consult your health professional/ breast feeding advisor.</li></ul>

Problem	Solution
Milk is leaking out from the massage cushion or remaining on the cushion.	<ul style="list-style-type: none"> <li>• Remove and refit the massage cushion. Make sure that it is installed correctly and firmly.</li> <li>• Do not lean backward in excess when pumping.</li> </ul>
Cracking/ Discoloring	<ul style="list-style-type: none"> <li>• Avoid contact antibacterial or abrasive detergents/ cleaners. Combinations of detergents, cleaning products, sterilisation solution, softened water, and temperature fluctuations may cause the plastic to crack. If any crack is found, stop using the pump immediately. Contact Philips Avent Consumer Care center for spare components.</li> <li>• Food coloring can discolor components, but this will not affect your usage.</li> <li>• Keep all the components away from the source of heat or direct sunlight as it can discolor components.</li> </ul>
Components are broken or lost.	<ul style="list-style-type: none"> <li>• Contact Philips Consumer Care center <b>0800 231 099</b> for spare components.</li> </ul>
Pump does not response.	<ul style="list-style-type: none"> <li>• Make sure the pump is correctly assembled and press the power button to switch on.</li> <li>• Make sure the cables between the pump and the power socket are correctly connected.</li> </ul>



Problem	Solution
Pump motor display flashes 3 seconds, then shuts down automatically.	<ul style="list-style-type: none"> <li>• When using the power adapter to supply power, make sure you are using the one Philips provided. Then make sure it is connected properly, then switch the pump on again.</li> <li>• If you use batteries to supply power, press the power button to switch off. Replace with new batteries and switch the pump on again.</li> <li>• After checking the 2 scenarios above, if the problem persists, contact the Consumer Care center for help.</li> </ul>

The silicone tube is too loose when it is plugged into machine or cap.

- Contact Philips Consumer Care center **0800 231 099** to buy and change a new silicone tube.

## 14 Important additional information

There are some common breast feeding-related symptoms described in the table below. If you experience any of these symptoms, contact a healthcare professional or breast feeding specialist.

Symptom	
Pain sensation	<ul style="list-style-type: none"><li>• Perceived pain in breast or nipple.</li></ul>
Sore nipples	<ul style="list-style-type: none"><li>• Persistent pain in the nipples at the beginning of the pumping period, or that lasts throughout the entire pumping period, or hurts between sessions, very similar to the pain felt during breast feeding.</li></ul>
Engorgement	<ul style="list-style-type: none"><li>• Swelling of the breast. The breast may feel hard, lumpy and tender.</li><li>• May include erythema (redness) of the breast area and fever.</li></ul>
Bruise, thrombus	<ul style="list-style-type: none"><li>• A reddish-purple discoloration that does not blanch when pressed. When a bruise fades, it becomes green and brown.</li></ul>
Blistering	<ul style="list-style-type: none"><li>• Looks like small bubbles on the surface of the skin.</li></ul>
Injured tissue on nipple (nipple trauma)	<ul style="list-style-type: none"><li>• Fissures or cracked nipples.</li><li>• Skin tissue peeling off the nipple. Normally occurs in combination with cracked nipples and/or blisters.</li><li>• Nipple tear.</li></ul>
Bleeding	<ul style="list-style-type: none"><li>• Cracked or teared nipples can lead to bleeding of the affected area.</li></ul>
Clogged mammary ducts	<ul style="list-style-type: none"><li>• A red, tender lump on the breast. May include erythema (redness) of the breast area and fever. Can lead to Mastitis (breast inflammation) if left untreated.</li></ul>

# 目錄

1 重要事項	28	11 回收	42
電磁場 (EMF)	29	12 保固與服務	42
2 簡介	30	13 疑難排解	43
概覽	31	14 其他重要資訊	45
控制面板	32		
3 清潔與消毒	33		
4 組裝	33		
5 使用吸乳器	36		
使用吸乳器之前	36		
開始吸乳	36		
暫停吸乳	39		
保存母乳	39		
用擠出的母乳餵哺寶寶	40		
6 成功的秘訣	41		
7 適合吸乳的時間	41		
一天中適合吸乳的時間	41		
8 存放	42		
9 相容性	42		
10 訂購配件	42		

# 1 重要事項

使用您的飛利浦 Avent 雙邊電動吸乳器前，請先仔細閱讀本使用手冊，並保留使用手冊以供日後參考。

您也可在飛利浦網站：

[www.philips.com/support](http://www.philips.com/support) 找到這份使用手冊。

## 警告

- 用完本產品後，請務必立即將插頭從電源插座拔掉。
- 請勿在洗澡時使用吸乳器。
- 請勿將吸乳器放置或存放在可能掉落或扯落至浴缸或水槽的位置。
- 請勿將吸乳器馬達、矽膠管和電源變壓器放置或掉落至水中或其他液體中。
- 若產品掉落至水中，請勿加以觸碰。請立即將插頭從電源插座拔掉。
- 請勿讓孩童將產品當成玩具。本產品請放在兒童和寵物無法取得的地方。
- 每次使用前，請檢查吸乳器 (包括電源變壓器) 是否有損壞的現象。若吸乳器插頭損壞、無法正常運作、曾經摔落或損壞，或者曾經浸入水中，切勿操作。
- 電源線無法更換。如果電源線或電源變壓器損壞，請將其丟棄。
- 僅限使用飛利浦 Avent 建議的配件。
- 請僅使用產品隨附的電源變壓器。
- 請勿將吸乳器 (包括電源變壓器) 暴露於極端高溫或置於陽光直射處。
- 請勿在室外使用吸乳器。
- 使用者不得自行維修吸乳器內的任何零件。請勿自行嘗試打開、調整，或維修吸乳器。
- 直接接觸到乳汁的吸乳器零件為個人保健用品，媽媽們不應共用。
- 在真空狀態下，請勿嘗試將吸乳器本體自乳房移開。關閉吸乳器電源，以您的手指解除胸部與吸乳器漏斗之間的密封狀態，然後將吸乳器從您的胸部移開。您也可以從馬達或蓋子拉開矽膠管，以釋放真空。
- 懷孕期間切勿使用，因為吸乳可能促使分娩。
- 昏昏欲睡或疲乏時，切勿使用。
- 身體官能或心智能力退化者，或是經驗與使用知識缺乏者，可在有人從旁監督或適當指示如何安全使用本產品，以及瞭解潛在危險的狀況下使用本產品。
- 請勿讓孩童使用本產品。
- 如果擠乳時感到疼痛，請停止擠乳，並諮詢您的哺乳顧問或醫療專業人士。
- 環境中如果有與空氣、氧氣或一氧化二氮混合的可燃性麻醉劑存在，請勿使用吸乳器。
- 本吸乳器雖然符合適用的 EMC 指令，但是仍可能受到過量排放的影響，以及/或是干擾更敏感的設備。

- 務請不要在吸乳器馬達上放置任何產品，例如枕頭、毯子等。請確認吸乳器馬達在通風且散熱良好的地方運作。

## 注意

- 在無人看管的情況下，請將本產品的插頭自電源插座拔掉。
- 請勿將任何異物插入任一開口處或矽膠管。
- 請勿縮短矽膠管。
- 在您連接吸乳器電源之前，請確認本地電壓與產品電源電壓相符。
- 每次使用前請清洗吸乳器並妥善消毒。
- 請勿使用抗菌、磨蝕性清潔劑或清潔液清洗吸乳器零件。
- 切勿將吸乳器浸入水中或消毒鍋，此舉可能會造成吸乳器永久損壞。
- 如果產生的真空造成不適或疼痛，請關閉吸乳器電源，以您的手指解除胸部與吸乳器漏斗之間的密封狀態，然後將吸乳器從您的胸部移開。您也可以從馬達或蓋子拉開矽膠管，以釋放真空。
- 倘若無法成功吸乳，則請勿一次連續吸乳超過五分鐘。
- 請勿使用其他製造商的任何配件或零件，或非飛利浦 Avent 建議之配件或零件。如果您使用此類配件或零件，保固即會失效。
- 若矽膠閥門看似損壞或破損，請勿使用吸乳器。請更換矽膠閥門。請參閱「保固與服務」單元，瞭解取得更換零件的資訊。

- 請勿將餵哺奶嘴當作假奶嘴、奶嘴或安撫奶嘴使用。請不要讓正值長牙期的寶寶長時間咬住奶嘴。持續長時間咬住奶嘴將會導致奶嘴損壞。基於衛生理由，使用三個月後應更換奶嘴。飛利浦 Avent 奶嘴僅能與飛利浦 Avent 奶瓶搭配使用。

## 電池

無論是 1.5V AA 非充電式電池或充電式電池，本產品皆可使用。

如需更換電池的相關指示，請參閱「組裝」單元。

- 充電式電池必須先自產品取出後才能充電。
- 不同類型的電池，或新舊不一的電池，皆不可混用。
- 電池需以正確極性安裝。
- 請先自產品取出電力耗盡的電池，再以安全的方式丟棄。
- 如將有一段時間不會使用產品而需加以收納，務請取出電池。
- 供電終端不可短路。
- 非充電式電池不可充電。

## 電磁場 (EMF)

本飛利浦產品符合所有電磁場暴露的相關適用標準和法規。

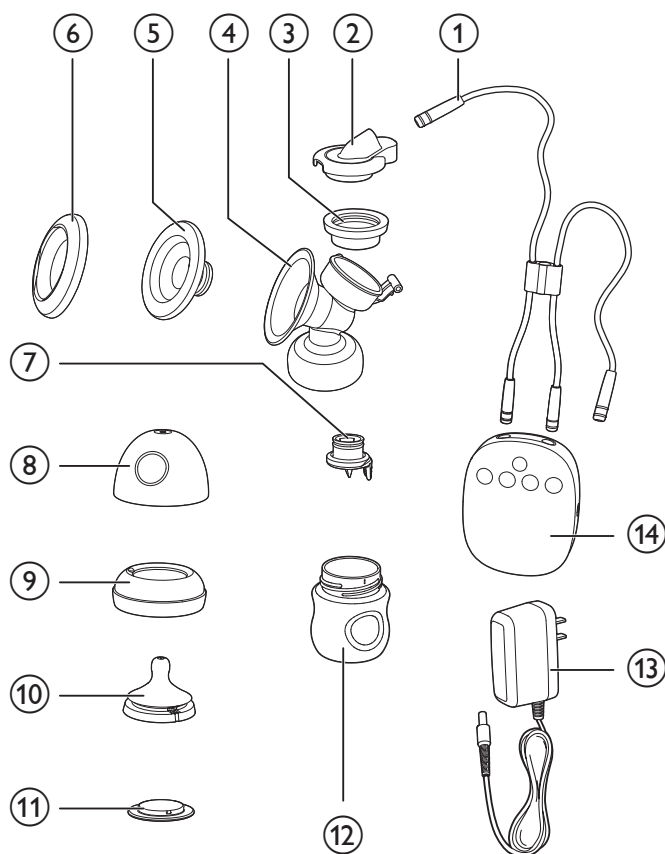
## 2 簡介

感謝您購買本產品。歡迎使用 Philips Avent！為充分享受飛利浦 Avent 為您提供的好處，請至下列位址註冊產品：[www.philips.com/welcome](http://www.philips.com/welcome)。

飛利浦 Avent 吸乳器更舒適，更便於有效吸乳。其配備「自然吸吮」吸乳組件，透過創新漏斗設計，模擬自然吸吮動作並擠壓乳頭和乳暈，讓吸乳全程更加舒適、有效率。飛利浦自然節奏技術模擬寶寶的自然吸吮節奏，從快速輕柔到慢速深層，協助媽媽們在短時間內更舒適也更有效率地泌乳與集乳。直覺式數位顯示設計具備自動記憶和暫停功能，加上 LED 背光細節，方便在夜間操作。

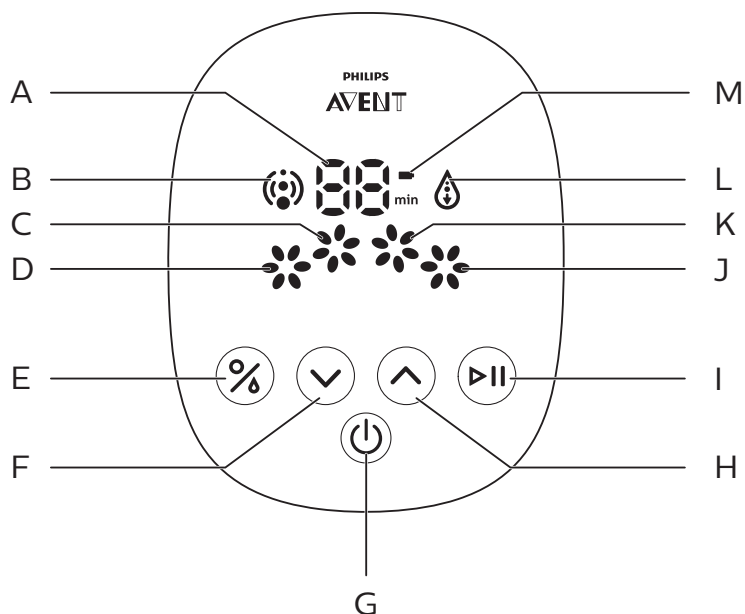
醫師建議，母乳為寶寶一歲前最佳的營養來源，六個月大之後便可搭配副食品餵食。您的乳汁不但可提供適合寶寶需求的養分，還富含有助於保護您的寶寶不受感染與過敏威脅的抗體。您的電動吸乳器將可協助您延長哺乳的時間。您可擠出乳汁加以保存，如此一來無論是外出幾個小時、享受應得的休息時間甚至是回到工作崗位，您的寶寶都可繼續享受您母乳帶來的好處，即便您無法親自餵哺。本吸乳器容易組裝、使用過程安靜且便於收納，您可隨身攜帶然後在您最方便的時刻進行吸乳，以維持母乳供應。

## 概覽



① 矽膠管	⑧ 奶嘴防塵上蓋 (x2)
② 蓋子 (x2)	⑨ 螺旋環 (x2)
③ 矽膠薄膜 (x2)	⑩ 奶嘴 (x2) (0m+)
④ 吸乳器本體 (x2)	⑪ 密封蓋 (x2)
⑤ 按摩軟墊 (x2)	⑫ 奶瓶 (x2) (125 毫升)
⑥ 吸乳器蓋 (x2)	⑬ 電源變壓器
⑦ 閥門 (x3) (一個備用)	⑭ 吸乳器馬達

## 控制面板



<b>A</b>	計時器計數指示燈	<b>H</b>	等級向上按鈕
<b>B</b>	刺激指示燈	<b>I</b>	暫停 / 播放按鈕
<b>C</b>	等級 2 指示燈	<b>J</b>	等級 4 指示燈
<b>D</b>	等級 1 指示燈	<b>K</b>	等級 3 指示燈
<b>E</b>	模式選擇按鈕 (選擇刺激和吸乳模式)	<b>L</b>	吸乳指示燈
<b>F</b>	等級向下按鈕	<b>M</b>	電量指示燈
<b>G</b>	電源按鈕		

### 備註

- 電量指示燈僅在電力不足時才會閃爍。我們建議您盡速更換電池。



## 3 清潔與消毒

在第一次和每次使用吸乳器之前，您必須拆解、清洗並消毒所有與您母乳接觸的吸乳器零件。(請參閱「概覽」單元的編號③、④、⑤、⑥、⑦、⑫)

在第一次和每次使用奶瓶與其零件之前，您也必須拆解、清洗並消毒。(請參閱「概覽」單元的編號⑧、⑨、⑩、⑪)

### ！ 注意

- 切勿清洗或消毒吸乳器馬達、矽膠軟管、蓋子和電源變壓器。這些零件不會接觸母乳。您可以使用軟布將這些零件擦乾淨。

您也可以使用洗碗機（僅限上層）或用溫肥皂水手洗，然後徹底沖洗乾淨。我們建議您以飛利浦 Avent 蒸氣消毒鍋消毒所有與母乳接觸的零件，或煮沸 5 分鐘進行消毒。為避免產品因長時間接觸鍋的高溫底部或壁面而造成不可逆的變形或損壞，應確保水量足以淹蓋所有組件。

### ！ 注意

- 小心清潔閥門和矽膠薄膜。若鴨嘴閥門損壞，您的吸乳器便無法正常運作。
- 如欲清潔閥門，在溫肥皂水中以手指輕輕搓揉即可。請勿插入任何物品，這可能會造成損壞。

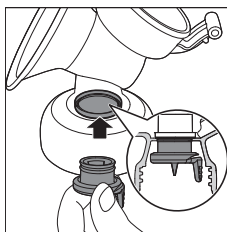
## 4 組裝

組裝吸乳器請遵循下列步驟。

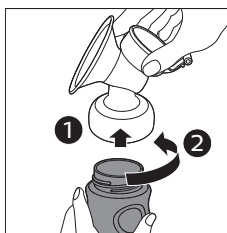
### ≡ 備註

- 務必依照本使用手冊的指示清潔與消毒吸乳器。
- 務必依照本使用手冊的指示正確組裝吸乳器。
- 為避免滲漏，組裝前請將邊緣的殘留物清除乾淨。將奶瓶裝上吸乳器本體時，請勿鎖得太緊。
- 拿取消毒過的組件前，請徹底洗淨雙手。

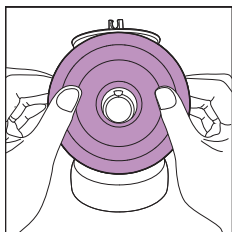
### 1 由下往上將閥門裝入吸乳器本體。



### 2 將奶瓶裝上吸乳器本體，然後逆時鐘旋轉鎖緊。將奶瓶裝上吸乳器本體時，請勿鎖得太緊。



- 3 將按摩軟墊裝入吸乳器漏斗內，然後按壓邊緣以確保完全密合。

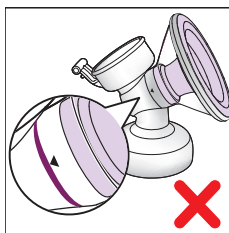
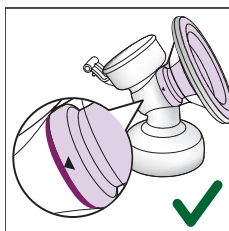
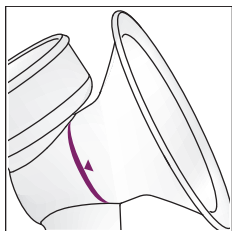


- 4 可用手指按壓按摩軟墊的末端，協助軟墊固定在漏斗末端位置箭頭指示的刻線上。

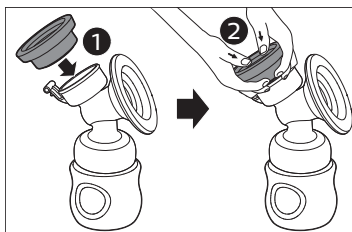


**!** 注意

- 為確保有效吸乳，請確認按摩軟墊的末端妥善固定在漏斗末端位置箭頭指示的刻線上。



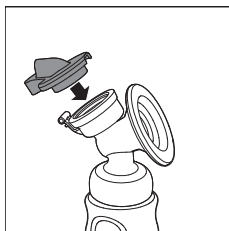
- 5 將矽膠閥門裝上吸乳器本體，然後按住邊緣以確保密合。



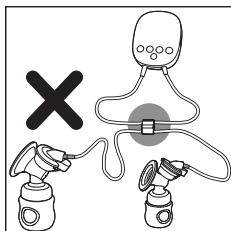
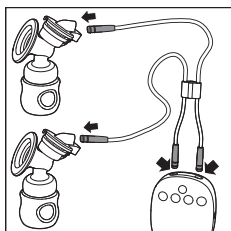
**\*** 秘訣

- 吸乳器潮溼時可能比較容易組裝。

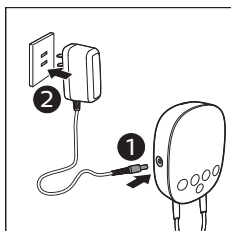
- 6 用力將蓋子壓進矽膠薄膜，讓它固定在矽膠閥門頂端。



- 7 針對另一個吸乳器本體，重複上述步驟 1 至 6。
- 8 將矽膠管穩固連接至蓋子與馬達。



- 9 將電源變壓器接上吸乳器馬達，然後將電源插頭插入電源插座。

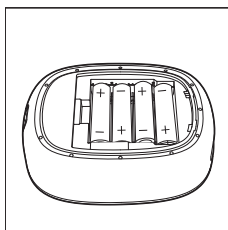


#### 備註

- 僅限使用本產品隨附的變壓器。請勿使用其他變壓器。

#### 秘訣

- 如要以電池操作，請依標示方向打開馬達座背蓋。將四個新的 1.5V AA 鹼性電池裝入電池盒（不建議使用碳鋅電池）。將背蓋裝回馬達座。建議您使用充電式電池，以供長時間使用。



#### 備註

- 如果您已經將電池裝入吸乳器馬達的電池盒，且插入變壓器，吸乳器會以主要電力供應運作。電池無法在馬達座中充電。

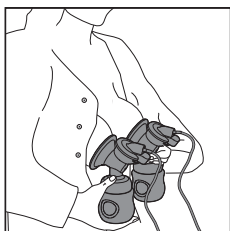
## 5 使用吸乳器

### 使用吸乳器之前

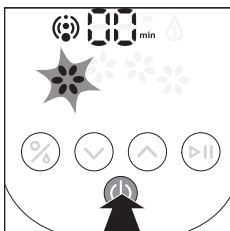
- 徹底洗淨雙手並確認乳房業已清潔乾淨。分別從兩邊乳頭輕輕擠出少量乳汁，以確保乳腺未受到阻塞。
- 請務必依照「清潔與消毒」以及「組裝」單元的步驟，清潔、消毒和組裝吸乳器。
- 坐在舒適的椅子上，全身放鬆。請在附近準備一杯水。

### 開始吸乳

- 1 將組裝好的吸乳器本體壓在胸部上。確定您的乳頭位於中央處，這樣按摩軟墊才能完全密合。請確認吸乳器沒有漏氣，否則無法產生吸力。



- 2 按下電源按鈕 (⏻)，開啟吸乳器電源。

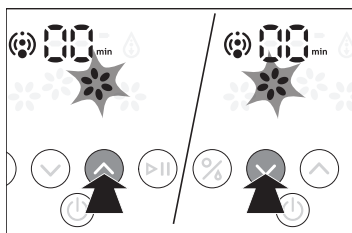


- ↳ 顯示面板會亮起 1 秒鐘。第一次使用時，吸乳器會自動以刺激等級 1 的模式啟動，刺激指示燈也會亮起。本產品具備記憶功能，可記憶您最近一次使用的刺激和吸乳等級。
- ↳ 您的乳房開始感受到吸力，以及按摩軟墊對乳頭的按摩動作。

### 備註

- 本產品的電源開啟時，計時器即開始。本產品的電源開啟 1 分鐘後，計時器指示燈會顯示 01。其單位為分鐘。
- 計時器會顯示總吸乳時間，暫停時間不算在內。
- 如果計時器顯示超過 99 分鐘（當達到 100 分鐘時），機器將自動關閉。

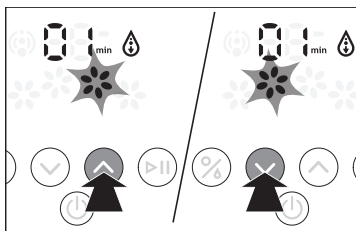
- 3 您可以選擇想要的刺激等級來刺激乳汁分泌，只要按下等級向上 (▲) 和等級向下 (▼) 按鈕即可。您可以按下等級向上按鈕來增強吸力。按下等級向下按鈕來降低吸力。共有 4 個刺激等級。



- 4 乳汁開始流出後，您可以按下模式選擇按鈕 (⌘) 切換至吸乳模式。



- 5 切換至吸乳模式後，您可以選擇想要的吸乳等級，只要按下等級向上 (▲) 和等級向下 (▼) 按鈕即可。您可以按下等級向上按鈕來增強吸力。按下等級向下按鈕來降低吸力。共有 4 個吸乳等級。

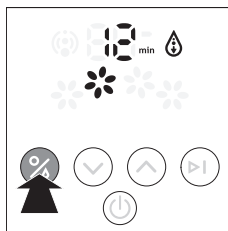


→ 吸乳指示燈會亮起，而非刺激指示燈。

## 備註

- 如果您的乳汁沒有立刻流出也無須擔心。請放輕鬆然後繼續按壓。
- 如果擠乳失敗，請勿連續吸乳超過 5 分鐘。您可嘗試在其他時間進行吸乳。
- 如果吸乳過程感覺不適或疼痛，請停止使用吸乳器，並諮詢您的哺乳諮詢師。
- 刺激和吸乳等級會與亮起的花數相符。也就是說，亮起 1 朵花表示等級 1，亮起 2 朵花表示等級 2。
- 如有需要，您也可以使用刺激模式來進行吸乳。

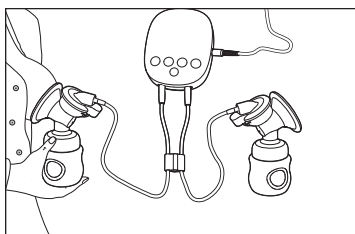
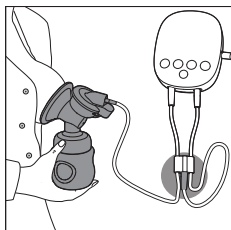
- 6 吸乳過程中，您可以按下模式選擇按鈕 (⌘) 在刺激模式與吸乳模式之間切換，以協助乳汁分泌。



## 備註

- 您不需要使用所有刺激 / 吸乳模式，只需使用您感到舒適的等級。
- 請將吸乳器馬達放在平穩的表面上，以免使用時意外掉落。如果沒有放在平穩的表面上，可能會導致吸乳器本體從乳房扯下，造成傷害。

- 7 雙邊電動吸乳器可以讓您同時對兩個乳房擠乳。不過您也可以使用本產品，對單邊乳房擠乳。若要對單邊乳房擠乳，您必須從蓋子拔下矽膠管，然後將其插入連接孔，或從一個乳房取下吸乳器。其他操作皆採用相同的方式。



## 備註

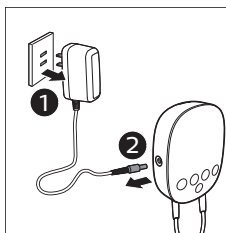
- 如果您各個乳房每次的擠乳量都超過 125 毫升，您可以使用 260 毫升 / 9 液體盎司的飛利浦 Avent 奶瓶，防止乳汁溢出。
- 如果未在本產品上進行任何操作（例如暫停、變更刺激等級和吸乳等級）達 30 分鐘（包括暫停中），本產品會自動關閉。

- 8 擠乳完畢時，請按下電源按鈕 (⏻) 關閉吸乳器電源，將吸乳器本體小心地從您的胸部移開。

## 秘訣

- 關閉吸乳器電源後，請以您的手指解除胸部與吸乳器漏斗之間的密封狀態，然後將吸乳器從您的胸部移開。

- 9 將電源插頭從電源插座拔除，然後從吸乳器馬達拔下電源變壓器。



## 秘訣

- 為保護本產品，關閉本產品電源時請務必按下電源按鈕，而非拔下電源插頭。

- 10 從吸乳器本體旋開奶瓶，準備供餵哺/保存使用。依照「清潔與消毒」單元中的指示，將其他使用過的吸乳器零件清潔乾淨。

### ！ 注意

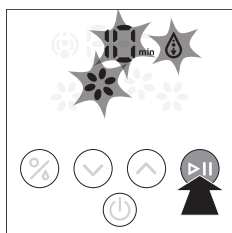
- 要是乳汁已超過奶瓶的最大容量刻度，則請勿讓吸乳器傾斜。重新吸乳前請更換新的奶瓶以避免灑出。
- 吸乳後，請立即從吸乳器本體取下奶瓶，然後蓋上密封蓋保存奶瓶。

## 暫停吸乳

本吸乳器具備暫停功能，若吸力讓您感到不適、需要更換奶瓶、需要重新調整吸乳器在乳房上的位置，或短暫休息時，您都可以隨時按下暫停按鈕 (⏸) 暫停吸乳。

- 1 當吸乳器處於特定刺激或吸乳模式時，按下暫停按鈕 (⏸) 會暫停吸乳。

→ 計時器指示燈、等級指示燈和刺激/吸乳指示燈會閃爍，提醒您暫停狀態。



### ≡ 備註

- 當吸乳器處於暫停狀態時，等級向下 / 等級向上按鈕及刺激 / 吸乳切換模式按鈕會失去其功能。僅暫停按鈕和電源按鈕仍可正常運作。

- 2 再次按下暫停按鈕 (⏸)，繼續使用暫停前選擇的刺激或吸乳模式吸乳。

## 保存母乳

### ！ 注意

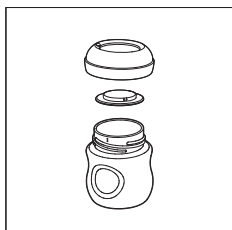
- 請勿重新冷凍母乳。
- 請勿將新鮮的母乳與經過冷凍的乳汁混合。
- 餵哺完畢時，請一律將剩餘的乳汁棄置。

### ≡ 備註

- 您只能儲存使用消毒吸乳器收集的母乳。

- 1 吸乳之後，請從飛利浦 Avent 奶瓶旋開吸乳器本體。
- 2 使用已清潔和消毒過的飛利浦 Avent 奶瓶保存擠出的母乳，並蓋上密封蓋。請立即放入冰箱或冷凍庫中。
  - 吸出的母乳可在冰箱內保存長達 48 小時 (請勿放在門邊) 或者在冷凍庫中保存長達 3 個月。

- 請在奶瓶上標示日期和時間。
- 請優先使用距今時間最久的母乳。



飛利浦 Avent Natural 奶瓶讓寶寶：

- 以自然嘴形含乳。幅度較寬的乳房形狀奶嘴頭讓寶寶可以輕鬆接受乳房餵哺與奶瓶餵哺。
- 獨特舒適的瓣片。奶嘴內的瓣片可提升柔軟度與彈性，使奶嘴不易塌陷。
- 進階防脹氣閥。創新的閥門設計可將空氣排入奶瓶，而非寶寶的胃中，進而減少脹氣與不適。

## 用擠出的母乳餵哺寶寶

- 如果您使用飛利浦 Avent 奶瓶保存母乳，您必須取下密封墊並裝上飛利浦 Avent 奶嘴，才能進行餵哺。



- 將冷凍的母乳置於冰箱內，隔夜解凍。如需立即餵食，您可以在碗中注入熱水，將母乳解凍。母乳解凍後，請於 24 小時內用盡。

關於加熱母乳：

- 將奶瓶放入一碗熱水中隔水加熱，或使用飛利浦 Avent 奶瓶和嬰兒食物加熱器，就能安全加熱母乳。

### ！ 注意

- 請切記！餵哺前務必檢查母乳或食物溫度。
- 請勿使用微波爐加熱母乳，因為這會破壞珍貴的營養成分與抗體。此外，加熱不均勻會導致液體內出現過熱區塊，這可能會導致喉嚨燙傷。
- 請勿將冷凍的奶瓶放入滾水中，以避免產生裂痕或破裂。



## 6 成功的秘訣

本雙邊電動吸乳器使用簡便。只需要稍做練習，很快您就會習慣擠乳。

- 請選擇您從容不迫且較不受干擾的時間。
- 注視著您的寶寶或寶寶的照片，有助於促進母乳分泌。
- 擠乳前，請先用溫熱的毛巾熱敷乳房，並稍加按摩數分鐘。如此能促進乳汁分泌，並減輕乳房的疼痛感。
- 溫暖與放鬆的情境也可以刺激泌乳。因此，可在溫水泡澡或淋浴之後，嘗試擠乳。
- 嘗試在為寶寶哺乳的同時從另一側乳房吸乳，或者在哺乳完後繼續接著吸乳。
- 不時重新調整吸乳器的位置，有助於刺激泌乳。



### 秘訣

- 請練習使用吸乳器，找出最適合您的擠乳技巧。若吸乳過程讓您感到疼痛，請停止使用並諮詢您的哺乳諮詢師。

## 7 適合吸乳的時間

可能的話，請等到您確定排乳與哺乳的時間後再行吸乳，除非您的醫師或哺乳諮詢師另有建議。

例外情況包括：

- 如果您是為了在醫院餵食嬰兒而吸乳。
- 如果您的乳房充血（疼痛或腫脹）。您可於哺乳前或兩次哺乳期間擠出少量乳汁，以減輕疼痛並讓您的寶寶更容易含住乳房。
- 如果您的乳頭疼痛或裂傷，請待痊癒後再行吸乳。
- 如果您與寶寶分開而且希望在寶寶回到您身邊後繼續餵哺母乳。您應定時吸乳以刺激乳汁分泌。

---

### 一天中適合吸乳的時間

- 清晨您的乳房腫脹時，第一次餵哺寶寶之前或之後。
- 哺乳結束後，寶寶沒有吸吮完兩邊所有的乳汁時。
- 兩次餵哺之間，或於您回到職場後，在休息時進行。

## 8 存放

- 請勿讓吸乳器直接曝曬在陽光下，長時間曝曬容易導致產品變色。
- 請將吸乳器和配件存放在安全、乾燥的地方。

## 9 相容性

飛利浦 Avent 電動吸乳器相容於我們產品系列中的飛利浦 Avent 奶瓶。當您使用其他飛利浦 Avent 奶瓶時，請使用與該奶瓶隨附相同的奶嘴類型。如需瞭解組裝奶嘴及一般清潔指示的詳細資料，請參閱我們網站上的手冊：[www.philips.com/support](http://www.philips.com/support)。

## 10 訂購配件

如需購買本產品的配件，請造訪本公司線上商店：[www.shop.philips.com/service](http://www.shop.philips.com/service)。若您所在國家 / 地區沒有線上商店，請聯絡您的飛利浦經銷商或飛利浦服務中心，電話為 0800 231 099。若您在購買產品配件上遭遇困難，請與您當地的飛利浦客戶服務中心聯絡。您可以在全球保證書上找到詳細聯絡資訊。

## 11 回收

產品使用壽命結束時，請勿與一般家庭廢棄物一併丟棄。請將該產品送至政府指定的回收點進行回收。此舉能為環保盡一份心力。

請遵循您所在國家 / 地區對電氣與電子產品分類收集的規定。正確處理廢棄產品有助於避免對環境和人類健康帶來負面影響。

## 12 保固與服務

在正確的使用方式下，飛利浦保證自身的產品可於購買日期起兩年內，順利使用。在這兩年的保固期間內，若發生任何材料瑕疵和製作缺陷，飛利浦將提供全額修理或更換。修理或更換時，請務必提供可信的證明，例如提供收據，證明要求提供修理或更換服務之日確實落在保固期間內。

保固範圍僅涵蓋吸乳器馬達和電源變壓器，不涵蓋非電子零件、配件和耗材的零件。保固不涵蓋運費和手續費，以及駐點服務費。如果您需要服務或資訊，或有任何疑問，請聯絡飛利浦 Avent 客戶服務中心。網站：[www.philips.com/support](http://www.philips.com/support)。

## 13 疑難排解

本單元概述您使用本產品時最常遇到的問題。如果您無法利用以下資訊解決您遇到的問題，請聯絡您所在國家 / 地區的客戶服務中心，電話為 0800 231 099，或上網與我們聯絡，網址是：  
[www.philips.com/support](http://www.philips.com/support)。

問題	方法
吸力不足。	<ul style="list-style-type: none"><li>請確認所有組件均正確組裝，鴨嘴閥門位置正確。</li><li><a href="#">請確認按摩軟墊固定在漏斗末端位置。</a></li><li>請確認蓋子、薄膜與按摩軟墊緊密安裝在吸乳器本體上，而且完全密合。</li><li>您所在地區的氣壓如果過低，可能會影響吸力。</li><li>請確定矽膠管已穩固連接至蓋子與馬達，而且沒有打結。</li></ul>
無法擠出乳汁。	<ul style="list-style-type: none"><li>請確認吸乳器組裝正確，可形成吸力。</li><li>放輕鬆然後再試一次，多加練習可以改善吸乳成效。</li><li>請參閱「成功的秘訣」段落。</li></ul>
吸乳時乳房會感到疼痛。	<ul style="list-style-type: none"><li>您可能按壓得太過用力。您無須用到吸乳器所能產生之最大吸力，只要採用舒適的等級即可。按下等級向下按鈕能降低吸力強度。</li><li>請諮詢您的醫護人員/哺乳諮詢師。</li></ul>
乳汁溢出按摩軟墊或殘留在軟墊上。	<ul style="list-style-type: none"><li>將按摩軟墊拆下並重新裝上。確認排乳按摩軟墊安裝正確而且緊密貼合。</li><li>吸乳時請勿過度後仰。</li></ul>

問題	方法
破裂 / 變色。	<ul style="list-style-type: none"> <li>• 避免接觸抗菌劑或磨蝕性清潔劑/清潔液。清潔劑、清潔產品、消毒溶液、軟水以及溫度變化等多種現象皆可能會導致塑膠破裂。若發現任何破裂狀況，請立刻停止使用吸乳器。請與飛利浦 Avent 客戶服務中心聯絡，取得替換組件。</li> <li>• 食用色素可能會導致組件變色，但不會影響您的使用。</li> <li>• 所有組件皆須避開熱源與陽光直射，因為這可能會導致組件變色。</li> </ul>
組件破損或遺失。	<ul style="list-style-type: none"> <li>• 如要取得替換組件，請聯絡飛利浦客戶服務中心，電話為 0800 231 099。</li> </ul>
吸乳器沒有反應。	<ul style="list-style-type: none"> <li>• 請確定已正確組裝吸乳器，按下電源按鈕開啟電源。</li> <li>• 請確定吸乳器和電源插孔之間的纜線已正確連接。</li> </ul>
吸乳器馬達顯示器會閃爍 3 秒，然後會自動關閉。	<ul style="list-style-type: none"> <li>• 使用電源變壓器供電時，請確定使用飛利浦提供的電源變壓器。接著確定已妥善連接，然後再次開啟吸乳器的電源。</li> <li>• 如果您使用電池供電，按下電源按鈕關閉電源。更換新電池並再次開啟吸乳器的電源。</li> <li>• 檢查上述 2 種情況後，若問題持續發生，請與客戶服務中心聯絡，尋求協助。</li> </ul>
矽膠管插入機器或蓋子時太鬆。	<ul style="list-style-type: none"> <li>• 如要購買並更換新的矽膠管，請聯絡飛利浦客戶服務中心，電話為 0800 231 099。</li> </ul>

## 14 其他重要資訊

下表列出幾個常見的哺乳相關症狀。若發生任何此類症狀，請聯絡醫療專業人士或哺乳專家。

症狀	
疼痛感	<ul style="list-style-type: none"><li>• 感到乳房或乳頭疼痛。</li></ul>
乳頭疼痛	<ul style="list-style-type: none"><li>• 乳頭在剛開始吸乳時持續疼痛，或是在整個吸乳過程中一直疼痛，或是在兩次吸乳之間感到疼痛，非常類似哺乳時的疼痛感。</li></ul>
充血	<ul style="list-style-type: none"><li>• 乳房腫脹。乳房可能會感到變硬、出現腫塊並對疼痛敏感。</li><li>• 可能包括乳房部位出現紅斑（發紅）和發熱。</li></ul>
瘀傷、血栓	<ul style="list-style-type: none"><li>• 按下後不會變白的紫紅變色現象。隨著瘀傷消退，會變成青色與褐色。</li></ul>
起水泡	<ul style="list-style-type: none"><li>• 看起來像皮膚表面出現小水泡。</li></ul>
乳頭組織受傷（乳頭破皮）	<ul style="list-style-type: none"><li>• 乳頭龜裂。</li><li>• 乳頭皮膚組織剝離。通常會與乳頭龜裂和/或起水泡現象同時出現。</li><li>• 乳頭撕裂傷。</li></ul>
流血	<ul style="list-style-type: none"><li>• 乳頭龜裂或撕裂傷可能導致相關部位流血。</li></ul>
乳腺管阻塞	<ul style="list-style-type: none"><li>• 乳房出現發紅觸痛腫塊。可能包括乳房部位出現紅斑（發紅）和發熱。若不治療，會導致乳房炎（乳房發炎）。</li></ul>





