

PHILIPS

Water Dispenser

ADD5910M



User manual
用戶手冊

English

CONTENTS

1 Important 1

2 Parts and features 3

3 Installation 5

4 How to use 6

5 Clean and Maintenance 6

6 Trouble shooting 10

7 Guarantee and service 11

8 Packing list 11

1. Important

Necessary precautions must be taken when using electrical appliances, and these include the following:

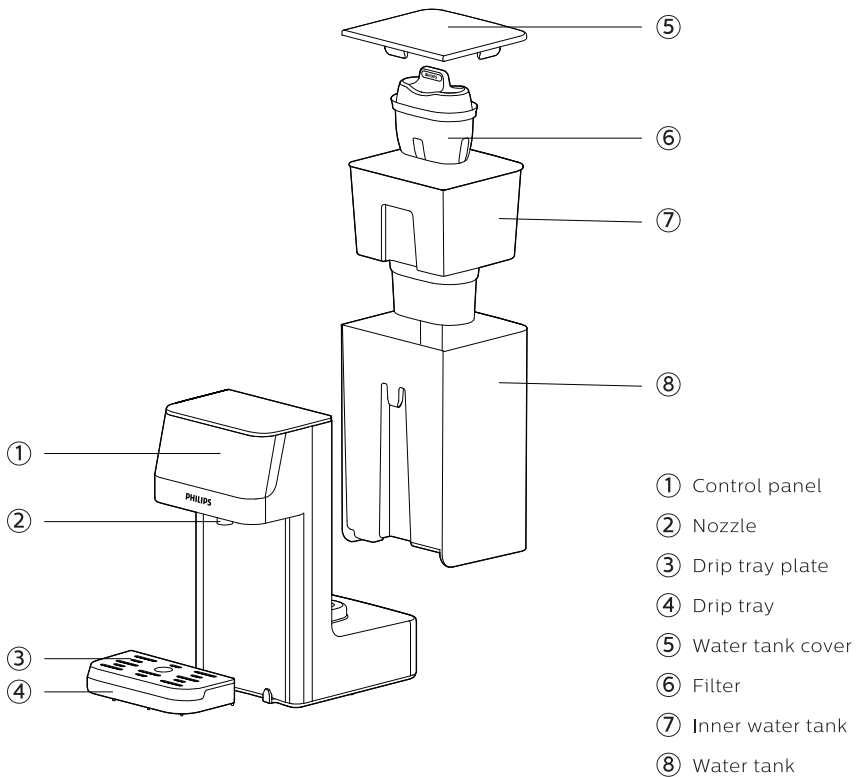
- Read all instructions carefully before using.
- Install the appliance according to the installation instructions in this user manual.
- Never use the appliance if the power cord or plug are damaged or if the appliance itself is faulty.
- Ensure that the power cord does not come into contact with hot surfaces.
- Never place the appliance body, plug or power cord in water or other liquids. Always wipe clean with a damp cloth.
- Do not operate the appliance when the water is below the minimal water level to avoid damaging the heating elements.
- Do not store or use this appliance outdoors.
- Do not let the cord hang over the edge of table or counter, and do not place the appliance on hot surface.
- Do not place the appliance on or near any gas or electric burner or inside heated oven.
- Do not put the appliance into a working disinfection cabinet.
- Do not freeze the appliance in the refrigerator.
- Do not lean the appliance or operate it upside down.
- This appliance is not intended for use by persons (including children) with reduced physical, sensory or mental capabilities, or lack of experience and knowledge, unless they have been given supervision or instruction concerning use of the appliances by a person responsible for their safety.
- This appliance can be used by children aged from 8 years and above and persons with reduced physical, sensory or mental capacities or lack of experience and knowledge if they have been given supervision or instruction concerning use of the appliance in a safe way and understand the hazards involved.
- Children shall not play with the appliance and space and user maintenance shall not be made by children without supervision.
- Make sure to operate the appliance when children are under good custody.
- This appliance is not a toy, please make sure the children do not play with it.
- Please ensure the appliance is used on a firm and flat surface out of reach of children, to avoid being overturned in a sudden and result in the scald or hitting injury.
- To protect against a fire, electric shock or other personal injury, do not immerse any part of the appliance in water or other liquid.

- Do not touch the hot surface, water spout when the appliance is operating.
- While the appliance is under working, do not touch or block the steam outlet by hand or other stuff, do not open the water tank lid in a rush, in order to avoid the scald by the hot steam or cause any other malfunctions.
- To avoid being scalded, it is prohibited to use hand or any parts of your body to feel the temperature or steam when the appliance is using.
- Do not use the appliance to heat anything other than water. Do not fill above the “max” indication. Do not operate it if water is below minimum.
- Unplug the appliance before cleaning and make sure it is cooled down thoroughly.
- If the power cord is damaged, it must be replaced by the manufacturer or its service agent or a similar qualified person in order to avoid any hazard.
- The power cord could only be replaced by the exclusive power cord if any damages.
- Do not operate the appliance when it is out of order or with malfunctions, return it to the nearest authorized service agent or manufacturer for examination, repair or replacement, do not try to disassembly it by yourself.
- This appliance is intended to be used in household and similar locations such as:
 - staff kitchen areas in shops, offices and other working environments;
 - farm houses;
 - hotels, motels and other residential type environments;
 - bed and breakfast type environments.
- Warning: misuse may cause injury.
- The heating element surface is subject to residual heat after use.
- Please save this instruction booklet.
- This product is intended to filter municipal water only. Do not put water of unknown quality or that has been microbiologically impaired into the product. Use only cold or room temperature water. Do not use for the preparation of baby food.
- Consume filtered water within 24 hours.
- Appliance outlet and other items may be hot after using.
- Be cautious of the hot steam when dispensing water $\geq 40^{\circ}\text{C}$.
- Do not move the appliance unless the power cord is unplugged.
- Failure to follow these instructions could cause scalding or damage to the product.
- **WARNING:** Do not put power strips or power banks at the rear of the appliance.

- If only a small amount of water is dispensed, there may be a temperature deviation. We suggest preheating the vessel.
- There may be a big water volume or temperature deviation if limescale builds up inside the heating element. Please descale according to chapter 5.

2. Parts and features

This is an instant heating water dispenser. With instant heating technology, it provides hot water with different temperatures within seconds. Thanks to the Philips Micro X-Clean filter, you can always enjoy the crisp and pure tasting water at home.



Control panel



Tea program

Press to quickly set 100°C, 250ml.



Safety lock

When hot water $\geq 40^{\circ}\text{C}$ is chosen, press to unlock before pressing the dispense button. Press to wake up the appliance during sleep mode.



Water temperature selection

Press to choose desired water temperature.



Water volume selection

Press to choose desired water volume.



Dispense button

Press to start or stop dispensing.



Cleaning/descale button

Long press for 3 seconds to start the cleaning/descaling process. During cleaning/descaling, press the button to pause, and press it again to restart. Note: the whole descale process is around 10minutes and cannot be stopped till it is finished.



Descal indicator

Lights up when it is time to descale. Lights off after the descaling process completes.



Water shortage indicator

Lights up when the water in the water tank is below the minimal level. Please refill the water tank.



Filter lifetime indicator

4 grids light up: the filter has a full lifetime.
2 grids light up: the filter has half of the lifetime left.
4 grids flashes: the filter reaches the end of life.



Filter lifetime reset

Long press both buttons for 3 seconds to reset the filter lifetime.

Main technical specifications

Product model	ADD5910M
Filter model	Micro X-Clean: AWP210 (1-pack) AWP211 (3-pack) AWP212 (6-pack)
Rated voltage	220-240V~
Rated frequency	50/60Hz
Rated power consumption	2200W-2600W
Applicable water source	Municipal tap water
Anti-shock level	I
Type of protection	IPX0
Applicable inlet water temperature	5°C-38°C

3. Installation

Before using the appliance for the first time

- Remove all packaging.
- Remove the tank lid and extract the inner water tank and water tank. Wash, rinse and dry thoroughly.
- Clean the appliance as per the first time cleaning instruction in chapter 5.

WARNING: PLEASE DO NOT DISASSEMBLE THIS APPLIANCE YOURSELF. ELECTRIC ELEMENTS WILL BE EXPOSED AND THERE IS A RISK OF ELECTRIC SHOCK.

Positioning of appliance

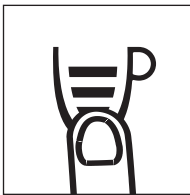
- Do not install this appliance in a very damp or hot place, or near heat source.
- Place appliance on a flat and even surface.
- Do not use this appliance outdoors. This appliance is only suitable for use indoors.
- **WARNING: DO NOT INSTALL THIS APPLIANCE IN DIRECT SUNLIGHT.**
- Ensure that the ventilation on both sides is never blocked or covered.

4. How to use

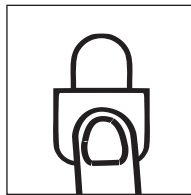
Clean the appliance first as per the first time cleaning instruction in chapter 5.

Fill water tank through to the “MAX” mark; water will flow through the filter at a set rate and may take some time due to the action of the filter cartridge.

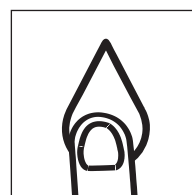
1. Plug in.
2. Place mug or glass on drip tray.
3. Select the desired temperature and volume (A-1).
4. Press the safety lock button to unlock the appliance (not applicable for ambient water) (A-2).
5. Press the dispense button to start dispensing (A-3).



A-1



A-2



A-3

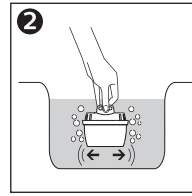
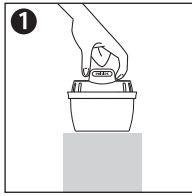
Note

- The appliance will automatically go to sleep mode if no operation within 1 minute. Touch the safety lock button to wake up the appliance.
- Please discard the water in the drip tray when it's full of water.
- There could be a temperature deviation of $\pm 5^{\circ}\text{C}$. There could be a volume deviation of $\pm 10\%$.
The actual temperature and volume depends on using environment and local tap water quality.

5. Clean and Maintenance

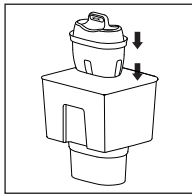
First time cleaning

1. Preparing the filter cartridge
 - Remove the packaging. It is common that its surface may have some carbon powder, this is normal. These particles are harmless and are washed off during the preparation process.
 - Soak the filter cartridge in clean water for 15 minutes. Shake the filter cartridge slightly to wash off the carbon powder

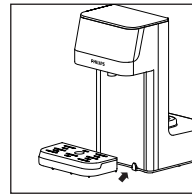


2. Preparing the appliance

- Remove the inner water tank.
- Ensure the seal ring is installed correctly.
- Press the filter cartridge into the the inner water tank. Ensure it is firmly secure (B-1).
- Reinsert the inner water tank into the water tank.
- Fill the water tank with 2L of cold tap water and refit the water tank into the appliance.
- Place drip tray and drip tray plate in front of the appliance (B-2).
- Place a jug or vessel under the dispense outlet.
- Plug in.
- Dispense ambient water till the water tank is empty.
- Discard the water dispensed. Your appliance is now ready to use.



B-1



B-2

Routine maintenance

- If the appliance is not used for more than 72 hours, we recommend cleaning it before using.
 - Discard the water in the water tank. Flush the tank.
 - Refill it with 1L of fresh tap water.
 - Dispense ambient water till the water tank is empty.
 - The appliance is ready to use.
- Wash, rinse and dry the inner water tank, water tank and the tank cover regularly, at least when the filter cartridge is replaced.
- Wash drip tray with soapy water. Rinse all soap away with clean water. Allow to air dry.

Note

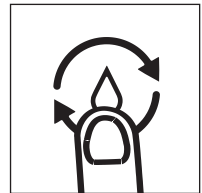
- Water is a foodstuff. We recommend using the filtered water within 24 hours.
- Should the appliance being unused for an extended period of time (for example a holiday) we recommend to remove the filter and place it in a sealed plastic bag and store in the fridge. This will help to maintain the hygiene of the filter. Before using the filter after storage, follow the preparation and installation instructions for use as normal.
- Always switch off and unplug the appliance before cleaning.
- Ensure the appliance is cool before cleaning.
- Do not use scouring pads, solvents or abrasives to clean as they may damage the appliance.

Descaling

- The descale Indicator lights up when the appliance requires the descale process.
- For safe and efficient operation of your appliance, it is important to descale regularly.
- Untreated scale deposits prevent the element conducting heat efficiently and may affect its performance.
- Ensure the inner water tank and filter are removed before starting descale process.

Descal Procedure

1. Remove the filter and the inner water tank.
2. Fill the water tank to the maximal water level, with 1:20 citric acid solution (1g of citric acid per 20ml water).
3. Place a 2L container under the dispense nozzle.
4. Long press the descale button for 3 seconds. (C-1)
5. The descale indicator will flash and the appliance will run a descale process. It will need around 5 mins. Caution: dispensed solution will be hot.
6. When the water shortage indicator lights up, discard the remaining citric acid solution, refill with fresh tap water to the maximal water level.
7. The appliance will run a cleaning cycle.
8. The descale indicator will turn off once the descaling completes.



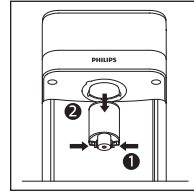
C-1

9. Pull out the nozzle downwards. Rinse it with clean tap water. (C-2)

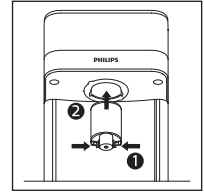
10. Install the nozzle back. Ensure it is assembled in place. (C-3)

11. Re-insert the filter and inner water tank.

The appliance is ready to use.



C-2



C-3

Note

- During descaling, press descale button to pause, press it again to restart.
- DO NOT cut off the power during descaling.
- The descale process cannot be stopped till it is finished.

Replacing the filter cartridge

To ensure the best performance, please change the filter cartridge according to the filter lifetime indicator, or the suggested replacement cycle.

- Please clean and install the filter cartridge as per the first time cleaning instruction above.
- Reset the filter lifetime by long press  and  for 3 seconds.

Model	Suggested Replacement Cycle
AWP210/AWP211/AWP212	After 100 liters or every 30 days, whichever comes first.

Filter lifetime indicator



4 grids light up: the filter has a full lifetime.

2 grids light up: the filter has half of the lifetime left.

No grid lights up: the filter reaches the end of life.

6. Trouble shooting

Problem	Possible causes	Solutions
The display panel does not light up.	The appliance is in sleep mode.	Touch the safety lock button to wake up the appliance.
	The appliance is not connected with power.	Plug in the power plug. If it does not work, please contact consumer care.
The appliance does not dispense hot water.	The appliance is not connected with power.	Plug in the power plug.
	The water in the water tank is below the minimal water level.	Fill the water tank up to the maximal water level.
	The dispense button is locked.	Press the safety lock button to unlock.
Button/display panel does not respond.	The appliance is not connected with power.	Plug in the power plug.
	The appliance is in sleep mode.	Touch safety lock button to wake up the appliance.
	There is condensed water on the display after dispensing hot water.	Wipe the panel with a dry cloth. If it does not work, please contact consumer care.
Leakage of the water tank	The water tank is not sitting well on the base.	Lift up the water tank and refit it into the appliance. Ensure it is firmly inserted.
	The sealing valve at the bottom of the tank is faulty.	Please contact consumer care.
The appliance does not dispense ambient water.	The appliance is not connected with power.	Plug in the power plug.
	The water in the water tank is below the minimal water level.	Fill the water tank up to the maximal water level.
	The water pump is damaged.	Please contact consumer care.
Unstable water flow.	Limescale builds up in the heating element.	Follow the descaling instruction in chapter 5 to descale.
Slow water flow.	Limescale builds up in the heating element.	Follow the descaling instruction in chapter 5 to descale.
	There is air in the water pump.	Fill the water tank up to the maximal water level.
Water shortage indicator lights up.	The water in the water tank is below the minimal water level.	Fill the water tank up to the maximal water level.
Odd taste of the water.	The appliance is not cleaned thoroughly after descaling.	Follow step 6-9 in chapter 5 descale instruction to clean the appliance.
	The filtered water is not used for a long time.	Discard the remaining water in the water tank and refill with fresh tap water.
	The filter has reached the end of life.	Please replace with a new filter cartridge.

Error Code	What does it mean	Solutions
E1	The inlet water temperature sensor is abnormal.	Please contact consumer care.
E2	The outlet water temperature sensor is abnormal.	Please contact consumer care.
E5	Dry heating alarm	Cut off the power. Contact consumer care.
EU	Display panel malfunction.	Please contact consumer care.

7. Guarantee and service

If you need information or if you have any questions, please visit the Philips website at www.philips.com or contact the consumer care center in your country. If there is no consumer care center in your country, go to the local dealer.

8. Packing list

Water dispenser	x1
Filter cartridge	x1
Drip tray	x1
User manual	x1
Quick start guide	x1



This symbol on the products and accompanying documents means that used electrical and electronic products should not be mixed with general household waste. For proper disposal or treatment, recovery and recycling, please take these products to designated collection points where they will be accepted on a free of charge basis. In some countries you may be able to return your products to your local retailer upon the purchase of a new product.

Disposing of this product correctly will help you save valuable resources and prevent any possible effects on human health and the environment, which could otherwise arise from inappropriate waste handling. Please contact your local authority for further details of your nearest collection point for WEEE. Penalties may be applicable for the incorrect disposal of this product in accordance with national legislation.

目錄

1	重要	12	5	清潔和維護	17
2	零件和特點	14	6	故障排除	21
3	安裝	17	7	保證與服務	22
4	如何使用	17	8	裝箱單	22

1. 重要

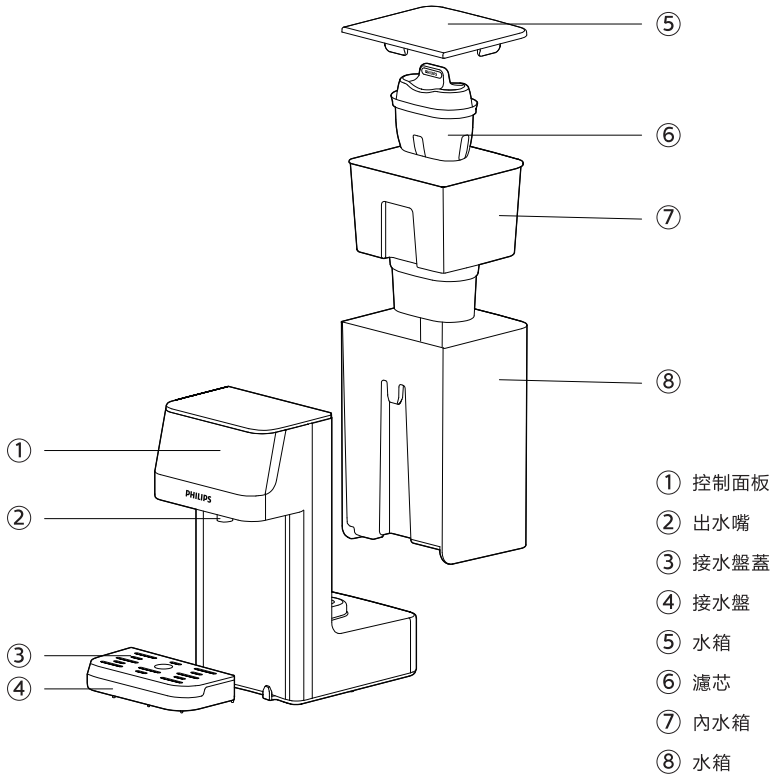
使用機器時必須採取必要的預防措施，包括以下內容：

- 使用前請仔細閱讀所有說明。
- 根據本用戶手冊中的安裝說明安裝設備。
- 如果電源線或插頭損壞或設備本身有故障，切勿使用該設備。
- 確保電源線不接觸高溫表面。
- 切勿將機器本體、插頭或電源線放入水或其他液體中。總是用濕布擦乾淨。
- 請勿在水位低於最低水位時操作設備，以免損壞加熱元件。
- 請勿在戶外存放或使用本機器。
- 不要讓電源線掛在桌子或櫃檯的邊緣，也不要讓產品接觸任何熱的表面。
- 請勿將本產品放在或靠近任何燃氣或電燃燒器或加熱的烤箱內。
- 請勿將設備放入工作中的消毒櫃中。
- 請勿在冰箱中冷凍本產品。
- 請勿傾斜設備或倒置操作。
- 本設備不適合身體、感官或精神能力有缺陷或缺乏經驗和知識的人（包括兒童）使用，除非他們由負責監護他們的人監督或指導他們使用設備。
- 本設備可供 8 歲及以上的兒童以及身體、感官或智力有缺陷或缺乏經驗和知識的人使用，前提是他們得到了有關以安全方式使用本設備的監督或指導，並了解涉及的危險。
- 兒童不得把玩本機器。兒童不得在無人看管的情況下進行清潔和用戶維護。
- 確保在兒童處於良好監護下時操作設備。
- 本機器不是玩具，請確保兒童不要把玩。
- 請確保在兒童接觸不到的牢固、平坦的表面上使用本產品，以免突然翻倒造成燙傷或撞傷。
- 為防止火災、觸電或其他人身傷害，請勿將設備的任何部分浸入水或其他液體。
- 請勿觸摸熱表面，設備運行時會有水流出。
- 機器在工作時，請勿用手或其他物品接觸或堵塞蒸汽出口，不要倉促打開水箱蓋，以免被熱蒸汽燙傷或引起其他故障。
- 為避免燙傷，使用時禁止用手或身體任何部位感受溫度或蒸汽。
- 請勿使用本產品加熱除水以外的任何東西。不要加水超過“最大”指示。如果水量低於最低限度，請勿操作。
- 清潔前先拔掉電源插頭，並確保其徹底冷卻。
- 如果電源線損壞，必須由製造商或其服務代理或類似的合格人員更換，以避免任何危險。

- 電源線如有損壞，只能更換專用電源線。
- 當機器出現故障時，請勿操作，將其送回最近的授權服務代理商或製造商進行檢查、維修或更換，不要試圖自行拆卸。
- 本設備旨在用於家庭和類似場所，例如：
 - 商店、辦公室和其他工作環境中的員工廚房區域；
 - 農舍；
 - 酒店、汽車旅館和其他住宅類型環境；
 - 住宿加早餐飯店類型的環境。
- 警告：誤用可能會造成傷害。
- 發熱體表面使用後有餘熱。
- 請妥善保管本說明書。
- 本產品僅用於過濾市政自來水。請勿將未知質量或已被微生物污染的水倒入產品中。僅使用冷水或室溫水。請勿用於製備嬰兒食品。
- 過濾水必須在24小時內飲用。
- 使用後機器插座和其它部份可能會很熱。
- 出水 $\geq 40^{\circ}\text{C}$ 時，小心熱蒸汽。
- 除非已切斷電源，否則不要移動設備。
- 不遵守這些說明可能會導致燙傷或產品損壞。
- 警告：請勿在設備背面放置多個拖板或便攜式電源。
- 如果只取出少量水，可能會出現溫度偏差。我們建議預熱容器。
- 如果水垢在加熱元件內部堆積，可能會導致水量或溫度偏差較大。請按照第 5 章除垢。

2. 零件和特點

這是一個即時加熱飲水機。採用即時加熱技術，可在數秒內提供不同溫度的熱水。得益於飛利浦 Micro X-Clean 過濾，您可以在家中隨時享用清爽純淨的水。



控制面板



泡茶模式
快速設定 100°C，250ml。



童鎖鍵
選擇熱水 $\geq 40^{\circ}\text{C}$ 時，按出水鍵前按解鎖。
在睡眠模式下按下可喚醒產品。



水溫選擇
選擇所需的水溫。



水量選擇
選擇所需的水量。



出水按鈕
開始或停止出水。



清洗/除垢按鈕
長按 3 秒開始清洗/除垢過程。在清洗/除垢過程中，按下按鈕暫停，再次按下按鈕重新開始。
注：整個除垢過程約10分鐘，完成前不可停止。



除垢指示燈
需要除垢時亮起。除垢過程完成後燈熄滅。



缺水指示燈
當水箱中的水低於最低水位時亮起。請給水箱加水。



濾芯壽命指示燈
4 個網格亮起：濾芯具有完整的使用壽命。
2 個網格亮起：濾芯的使用壽命還剩一半。
4 個網格閃爍：濾芯已達到使用壽命。



濾芯壽命重置
長按兩個按鈕 3 秒鐘可重置濾芯使用壽命。

主要技術規格

產品型號	ADD5910M
濾芯型號	Micro X-Clean: AWP210 (1-pack) AWP211 (3-pack) AWP212 (6-pack)
額定電壓	220-240V~
額定頻率	50/60Hz
額定功耗	2200W-2600W
適用水源	市政自來水
抗衝擊等級	I
防護類型	IPX0
適用進水溫度	5°C-38°C

3. 安裝

首次使用本產品之前

- 拆除所有包裝。
- 取下水箱蓋並取出內水箱和水箱。徹底清洗、沖洗和抹乾。
- 按照第 5 章中的首次清潔說明清潔設備。

警告：請不要自行拆卸本設備。電氣元件會暴露在外，有觸電的危險。

使用環境

- 請勿將本設備安裝在非常潮濕、炎熱或靠近熱源的地方。
- 將設備放在平坦且平整的表面上。
- 請勿在戶外使用本設備。本機器僅適合在室內使用。
- 警告：請勿將設備安放在陽光直射下。
- 確保兩側的通風口未被阻塞或覆蓋。

4. 如何使用

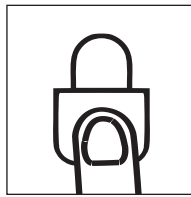
首先按照第 5 章中的首次清潔說明清潔設備。

將水箱加滿至“MAX”標記；水將流過濾芯，並且可能需要一些時間。

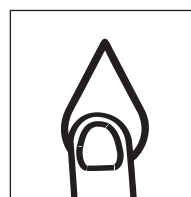
1. 接通電源。
2. 將杯子放在滴水盤上。
3. 選擇所需的溫度和水量 (A-1)。
4. 按下安全鎖定按鈕以解鎖設備（不適用於常溫水）(A-2)。
5. 按下出水按鈕開始取水 (A-3)。



A-1



A-2



A-3

注意

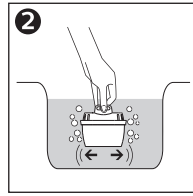
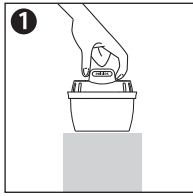
- 如果在 1 分鐘內沒有操作，產品將自動進入睡眠模式。按下安全鎖按鈕可以喚醒設備。
- 滴水盤盛滿水時，請將水倒掉。
- 出水溫度可能存在 $\pm 5^{\circ}\text{C}$ 的誤差。水量可能存在 $\pm 10\%$ 的誤差。實際出水水溫及水量可能受使用環境及當地水質影響，會存在偏差。

5. 清潔和維護

第一次清潔

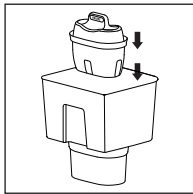
1. 準備濾芯

- 拆除包裝。濾芯表面可能會有一些碳粉，這是正常的。這些顆粒是無害的，在準備過程中會被洗掉。
- 將濾芯浸泡在乾淨的水中 15 分鐘。輕輕搖晃濾芯，洗去表面的碳粉。

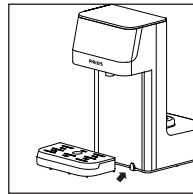


2. 準備設備

- 拆下內水箱。
- 確保密封環安裝正確。
- 將濾芯壓入內水箱。確保它牢牢固定 (B-1)。
- 將內水箱重新插入水箱。
- 向水箱中注入 2 公升自來水，然後將水箱重新安裝到設備中。
- 將滴水盤和滴水盤板放置在設備前面 (B-2)。
- 在出水嘴下方放置一個水壺或容器。
- 接通電源。
- 連續取水，直到水箱排空。
- 倒掉排出的水。您的設備現在可以使用了。



B-1



B-2

日常維護

- 如果產品超過 72 小時未使用，我們建議在使用前對其進行清潔。
 - 倒掉水箱中的水。沖洗水箱。
 - 重新注入 1 公升新鮮自來水。
 - 連續取水直到水箱排空。
 - 設備可以使用了。
- 定期清洗、沖洗和擦乾內水箱、水箱和水箱蓋，至少在更換濾芯時進行一次。
- 用肥皂水清洗滴水盤。用清水沖洗掉所有肥皂然後風乾。

注意

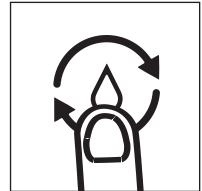
- 我們建議在 24 小時內使用過濾後的水。
- 如果長時間不使用設備（例如假期），我們建議將過濾器取出並放入密封的塑料袋中並存放在冰箱中(非結冰格)。這將有助於在不使用時維護濾芯。再次使用濾芯之前，請按照正常使用的準備和安裝說明進行操作。
- 清潔前務必關閉設備並拔下電源插頭。
- 清潔前確保設備已冷卻。
- 請勿使用百潔布、溶劑或研磨劑進行清潔，因為它們可能會損壞設備。

除垢

- 當機器需要除垢程序時，除垢指示燈亮起。
- 為了您的機器安全有效地運行，請定期除垢。
- 未經處理的水垢沉積物會阻止元件有效導熱並可能影響其性能。
- 確保在開始除垢過程之前拆除內水箱和濾芯。

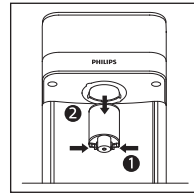
除垢程序

1. 拆下濾芯和內水箱。
2. 將水箱加滿1:20檸檬酸溶液（每20ml水加1g檸檬酸）至最大水位。
3. 在出水嘴下方放置一個 2 公升 的容器。
4. 長按除垢按鈕 3 秒鐘。(C-1)
5. 除垢指示燈將閃爍，機器將運行除垢程序。這將需要大約 5 分鐘。
注意：排出的溶液會很熱。
6. 當缺水指示燈亮起時，將剩餘的檸檬酸溶液倒掉，重新注入新鮮自來水至最高水位。
7. 設備將運行清潔程序。
8. 除垢完成後，除垢指示燈將關閉。

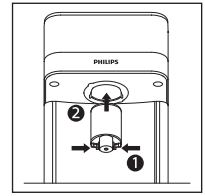


C-1

9. 向下拉出出水嘴。用乾淨的自來水沖洗。(C-2)
10. 裝回出水嘴。確保其安裝到位。(C-3)
11. 重新插入濾芯和內水箱。設備可以使用了。



C-2





C-3

注意

- 除垢期間，按除垢按鈕暫停，再按一次重新開始。
- 請勿在除垢期間切斷電源。
- 除垢過程在完成之前不能停止。

更換濾芯

為確保最佳性能，請根據濾芯壽命指示燈或建議的更換週期更換濾芯。

- 請按照上述第一次清潔說明清潔和安裝濾芯。
- 長按  和  3 秒，重置濾芯使用壽命。

型號	建議更換週期
AWP210/AWP211/AWP212	100 公升後或每 30 天，以先到者為準。

濾芯壽命指示燈



4 個網格亮起：濾芯具有完整的使用壽命。

2 個網格亮起：濾芯的使用壽命還剩一半。

沒有網格亮起：濾芯已達到使用壽命。

6. 故障排除

問題	可能的原因	解決方案
顯示面板不亮	設備處於睡眠模式	按下安全鎖定按鈕以喚醒設備。
	設備未連接電源。	插入電源插頭。如果它不起作用，請聯繫消費者服務。
機器不流出熱水	設備未連接電源。	插入電源插頭。
	水箱中的水低於最低水位。	將水箱加滿至最高水位。
	出水按鈕被鎖定。	按安全鎖按鈕解鎖。
按鈕/顯示面板沒有響應	設備未連接電源。	插入電源插頭。
	設備處於睡眠模式。	輕觸安全鎖定按鈕以喚醒設備。
	排出熱水後，顯示屏上有冷凝水。	用乾布擦拭面板。如果它不起作用，請聯繫消費者服務。
水箱漏水	水箱沒有很好地放在底座上。	提起水箱並將其重新安裝到設備中。確保其牢固插入。
	水箱底密封閥故障。	請聯繫消費者服務中心。
該設備不分配常溫水	設備未連接電源。	插入電源插頭。
	水箱中的水低於最低水位。	將水箱加滿至最高水位。
	水泵損壞。	請聯繫消費者服務中心。
不穩定的水流	水垢積聚在加熱元件中。	按照第 5 章中的除垢說明進行除垢。
水流緩慢	水垢積聚在加熱元件中。	按照第 5 章中的除垢說明進行除垢。
	水泵中有空氣。	將水箱加滿至最高水位。
缺水指示燈亮起	水箱中的水低於最低水位。	將水箱加滿至最大水位。
水有怪味	除垢後未徹底清潔機器。	按照第 5 章除垢說明中的步驟 6-9 清潔設備。
	過濾後的水長期不用。	倒掉水箱中剩餘的水並重新注入新鮮的自來水。
	濾芯已達到使用壽命。	請更換新的濾芯。

錯誤代碼	這是什麼意思	解決方案
E1	進水溫度傳感器異常。	請聯繫消費者服務中心。
E2	出水溫度傳感器異常。	請聯繫消費者服務中心。
E5	乾熱警報。	切斷電源。聯繫消費者服務中心。
EU	顯示面板故障。	請聯繫消費者服務中心。

7. 保證與服務

如果您需要信息或有任何疑問，請訪問飛利浦網站 www.philips.com 或聯繫您所在國家/地區的消費者服務中心。如果您所在的國家/地區沒有消費者服務中心，請前往當地經銷商處。

8. 裝箱單

飲水機	x1
濾芯	x1
滴水盤	x1
用戶手冊	x1
快速入門指南	x1



產品及隨附文件上的此符號表示使用過的電子電器產品不應與一般生活垃圾混合。如需妥善處置或處理、回收和再循環，請將這些產品帶到指定的收集點，並由專人接收。在某些國家/地區，您可以在購買新產品後將產品退回當地零售商。

正確處置本產品將幫助您節省寶貴的資源，並防止對人類健康和環境產生任何可能的影響，否則可能因廢物處理不當而產生危害。有關離您最近的 WEEE 收集點的更多詳細信息，請聯繫您當地的當局。根據國家立法，不當處置本產品可能會受到處罰。



Register your product and learn more in the website link below:

www.philips.com/water

Specifications are subject to change without notice

© 2021 AquaShield

All rights reserved.

The Philips trademark and the Philips Shield Emblem are registered trademarks of Koninklijke Philips N.V. used under license.

This product has been manufactured by and is sold under the responsibility of Hong Kong AquaShield Health Technology Company Limited and Hong Kong AquaShield Health Technology Company Limited is the warrantor in relation to this product.

Rev A JUN 21

