

Register your product and get support at
www.philips.com/welcome

WP3822



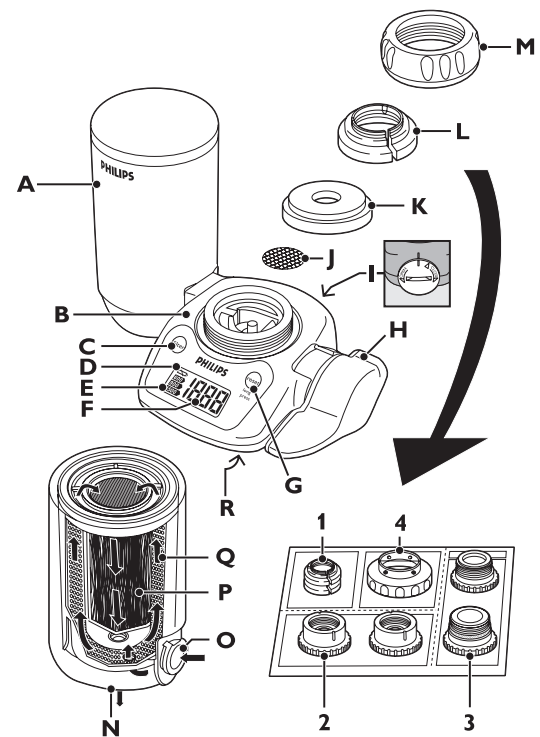
www.philips.com

100% recycled paper
 100% papier recyclé

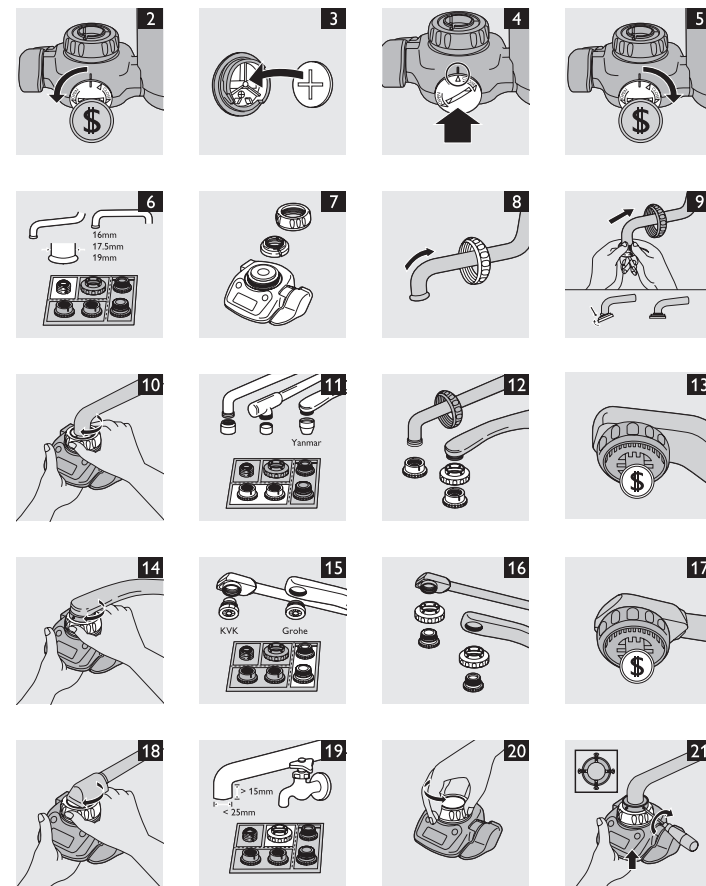
4222.002.7050.2

PHILIPS





1



ENGLISH 6

繁體中文 23

Introduction

Congratulations on your purchase and welcome to Philips! To fully benefit from the support that Philips offers, register your product at www.philips.com/welcome.

General description (Fig. 1)

- A** Filter cartridge
- B** Water purifier housing
- C** Filter capacity selection button
- D** Battery low indication
- E** Selected filter capacity indication
- F** Remaining filter capacity indication
- G** Reset button
- H** Water selection lever
- I** Battery compartment cover
- J** Stainless steel screen
- K** Rubber washer
- L** Adapter
 - 1 A-type
 - 2 B-type
 - 3 C-type
 - 4 D-type
- M** Attachment nut
- N** Filtered water outlet
- O** Unfiltered water inlet
- P** Granular activated carbon & ion exchanger
- Q** Hollow fibre
- R** Unfiltered water outlet

Important

Read this user manual carefully before you use the appliance and save it for future reference.

Warning

- This appliance is not intended for use by persons (including children) with reduced physical, sensory or mental capabilities, or lack of experience and knowledge, unless they have been given supervision or instruction concerning use of the appliance by a person responsible for their safety.
- Children should be supervised to ensure that they do not play with the appliance.

Before daily use

- To prevent quick clogging of the filter cartridge, let the water run at the unfiltered setting for around 5 seconds before every use.
- If the water is highly coloured or turbid due to work on your water network, do not let the water run at the filtered setting until the water is clear.
- Let the water run at the filtered setting for 10 seconds before use each day.
- Let the water run at the filtered setting for 60 seconds before use if you have not used the water purifier for more than two days.
- If you have not used the water purifier for more than two weeks, let the water run at the filtered setting for 2-3 minutes before use. If the filter cartridge emits an unpleasant smell, replace it with a new one.

Water temperature

- Do not let water hotter than 50°C run through the water purifier, because this may damage the appliance.
- Do not let the water purifier freeze.

Battery

To prevent that the battery leaks, overheats or explodes:

- Do not disassemble the battery.
- Do not charge the battery.
- Do not use a damaged battery.
- Do not expose the battery to water or high humidity levels.
- Do not expose the battery to direct sunlight, high temperatures or fire.

8 ENGLISH

- Any liquid leaking from the battery is harmful to eyes and skin. Avoid eye and skin contact.

Applications

- Only use the appliance to filter water that meets drinking water standards at the point of use.
- Do not block the filtered water outlet or connect other devices to it.
- If the water pressure is very high, reduce the water flow of the tap to prevent damage to the cartridge.
- Keep the water purifier away from heat to avoid distortion or breakage.
- Do not tamper with the water purifier.
- Do not remove the filter cartridge while you use the water purifier.
- Do not use the water purifier without a filter cartridge.
- Do not place the appliance near a window where it is exposed to direct sunlight.
- This appliance does not soften water.
- Do not use filtered water in aquariums. Tap water, filtered or unfiltered, can be harmful to fish.
- Do not store purified water to avoid contamination. Air contact contaminates purified water quickly. If you want to store purified water, use a clean container and keep it in the refrigerator. Do not keep it in the refrigerator longer than 1 day to avoid contamination.

Features

- Philips' multi-filtration system consists of a primary filter, a secondary filter, a high-tech hollow-fibre membrane filter, an ion exchanger filter and a granular activated carbon filter.
- The hollow fibre membrane contains more than 300 billion micropores that are small enough to remove particles down to 0.1 µm. It eliminates 99.99%* of bacteria, rust and other particles larger than the micropore size from your tap water without removing calcium, magnesium and other minerals that are vital to your body. (* tested according to Japanese Water Purifier Association (JWPA) standard).
- The ion exchanger removes soluble lead.

- The granular activated carbon removes harmful chlorination by-products, harmful industrial pollutants, such as volatile organic chemicals, and agricultural pollutants, such as the pesticide CAT. It also removes the unpleasant chlorine smell and taste from your tap water.
- The LCD display on the water purifier shows the current remaining filter capacity. A remaining filter capacity of 0 tells you that you have to replace the filter. Philips' unique cartridge replacement indicator also helps you to determine when to replace the filter.
- The high-speed initial flow rate of 1.6 litres per minute gives you plenty of clean water instantly.
- The water selection lever offers you a choice of three water flow types: unfiltered spray, unfiltered stream or filtered spray.
- The eight tap-mounting adapters supplied with the water purifier allow easy installation on almost any type of tap.
- The bayonet-type mount ensures quick, easy and secure filter cartridge replacement.

Preparing for use

Inserting the battery

- Before you insert the battery, make sure your hands and the water purifier are dry.
 - Keep away from the kitchen sink to prevent the battery from falling down the drain.
 - Insert the battery before you install the water purifier on the tap.
- 1** Use a coin to turn the battery compartment cover on the back of the water purifier in the 'OPEN' direction. Remove the battery compartment cover (Fig. 2).
 - 2** Place the battery (included) in the cover, with the + pole facing the battery compartment cover (Fig. 3).
 - 3** Place the battery compartment cover back onto the water purifier in such a way that the '▲' mark on the cover is aligned with the 'I' mark on the water purifier. (Fig. 4)

10 ENGLISH

- 4 Use a coin to turn the battery cover in the 'CLOSE' direction until the 'I' mark on the cover is aligned with the 'I' mark on the water purifier (Fig. 5).

Note: Make sure you align the 'I' marks properly, otherwise water may leak into the battery compartment.

- When the battery is properly inserted, the LCD display performs a self-check for approx. 9 seconds. Then the display goes off again.

Before installation

The screw thread of the tap is sharp.

- Before you install the water purifier, make sure all tap-mounting adapters you require are present.
- The tap must have a diameter of 13mm-25mm.
- Determine what type of tap you have and select the appropriate adapter.
- The adapters supplied make the water purifier suitable for almost any kitchen tap. However, the water purifier may not fit some uncommon types of taps.
- The tap water pressure has to be between 0.7kgf/cm² (7 metres of water column/70kPa) and 3.5kgf/cm² (35 metres of water column/350kPa). If you use the water purifier at a water pressure outside this range, either the filtered water flow will be extremely low or the water purifier will get damaged.

Installation A-type adapter

- For taps with a round spout with a diameter of 16mm, 17.5mm or 19mm (Fig. 6).

- 1 Remove the attachment nut and the adapter from the water purifier housing (Fig. 7).
- 2 Pass the attachment nut over the tap spout (Fig. 8).
- 3 Place the matching adapter (A-type) over the tip of the spout. The 16mm adapter is packed with the water purifier. If necessary, replace it with the 17.5mm adapter or 19mm adapter to fit the diameter of your tap (Fig. 9).

- 4 Screw the attachment nut firmly onto the water purifier housing (Fig. 10).

Installation B-type adapter

- For taps with an aerator (threaded on the outside) (Fig. 11).

- 1 Remove the attachment nut and the adapter from the water purifier (Fig. 7).
- 2 Remove the aerator cap from the tap and pass the attachment nut over the spout. Take out the original adapter and screw the matching adapter (B-type) onto the tap (Fig. 12).
- 3 Tighten the adapter further with a coin (Fig. 13).
- 4 Firmly screw the attachment nut onto the water purifier housing (Fig. 14).

Installation C-type adapter

- For taps with an aerator (threaded on the inside) (Fig. 15).

- 1 Remove the attachment nut and the adapter from the water purifier housing (Fig. 7).
- 2 Remove the aerator cap from the tap. Take out the original adapter and screw the matching adapter (C-type) onto the tap through the attachment nut. If water leakage occurs, wind Teflon tape round the screw thread of the adapter before you screw it onto the tap (Fig. 16).
- 3 Tighten the adapter further with a coin (Fig. 17).
- 4 Firmly screw the attachment nut onto the water purifier housing (Fig. 18).

Installation D-type adapter

- For taps other than A, B or C. (Fig. 19)

- 1 Remove the attachment nut and the adapter from the water purifier housing (Fig. 7).
- 2 Take out the original adapter and screw the D-type adapter onto the water purifier housing. (Fig. 20)

12 ENGLISH

- 3** Push the water purifier housing onto the tap from below and tighten the 4 screws evenly (Fig. 21).
- 4** Screw the attachment nut firmly onto the water purifier housing (Fig. 22).

Make sure the rubber washer is firmly pushed against the tap to prevent water leakage.

Installing the filter cartridge

- 1** Make sure the tap is closed.
- 2** Set the water selection lever to the unfiltered stream position (Fig. 23).
- 3** Tilt the filter cartridge 90° backwards and insert it into the water purifier housing. (Fig. 24)
- 4** Pull the cartridge upwards until it is in upright position. (Fig. 25)
- 5** Air trapped inside the filter cartridge affects the flow rate of the filtered water. To avoid this, slightly open the tap and let water run through the filter cartridge for 30 seconds after you install/replace the filter cartridge. The slow stream of water helps to remove any air trapped in the filter.

Setting the filter capacity

When you install the first filter, follow the instructions below to activate the countdown of the filter capacity.

The default filter capacity setting of the water purifier is 1500 litres. The capacity of the filter cartridge supplied with the WP3822 is 1500 litres.

- 1** Make sure that the water purifier housing and the filter cartridge are properly installed.
- 2** Press the filter capacity selection button.
 - ▶ The default filter capacity of 1500 litres flashes on the display for 4 seconds and is then shown continuously for another 5 seconds to indicate that the selected setting has been set.

Note: If you see another filter capacity on the display of your water purifier, press the filter capacity selection button again until the display shows the capacity of your filter cartridge (1500, 900 or 600 litres). The selected capacity flashes for 4 seconds and is then shown continuously for another 5 seconds to indicate that the setting has been set.

Note: When you replace the filter cartridge for the first time and any next time, reset the filter capacity as described in section 'How to reset the filter capacity' in chapter 'Replacement'.

Using the appliance

1 Turn the water selection lever to the desired setting ('click').

The water selection lever has 3 settings: filtered spray, unfiltered spray and unfiltered stream. See the sections below.

2 Open the tap.

Filtered spray

Select this setting for drinking, washing vegetables or fruits and for cooking.

1 Turn the water selection lever until the filtered spray symbol is aligned with the indicator (Fig. 26).

Do not let water hotter than 50°C run through the water purifier at this setting, as this may damage the water purifier.

If you filter water between 35°C and 50°C, the water may have an unpleasant smell. The filter cartridge has absorbed this smell during filtering, but releases it again if you filter water hotter than 35°C.

2 Open the tap.

- Filtered spray comes out of the water purifier.
- The display is on and counts down the remaining filter capacity.

Note: The LCD display only shows the remaining filter capacity when you use the water purifier at the filtered spray setting and when the water pressure is more than the minimum required 0.7kgf/cm² (7 meters of water column/ 70kPa).

14 ENGLISH

Note: The display is off when you do not use the water purifier and when you use it at the unfiltered spray and unfiltered stream settings.

Unfiltered spray

Select this setting for washing dishes and other jobs that require a gentle water flow.

- 1 Turn the water selection lever until the unfiltered spray symbol is aligned with the indicator (Fig. 27).

Do not let water hotter than 50°C run through the water purifier at this setting, as this may damage the water purifier.

Unfiltered stream

Select this setting for a strong water flow.

- 1 Turn the water selection lever until the unfiltered stream symbol is aligned with the indicator (Fig. 23).

Do not let water hotter than 50°C run through the water purifier at this setting as this may damage the water purifier.

Cleaning

Never use scouring pads, detergents, abrasive cleaning agents or aggressive liquids such as thinner, alcohol, petrol or acetone to clean the appliance. These substances may cause cracking, discolouration or distortion.

- 1 Make sure the battery compartment cover is closed properly before you clean the appliance.
- 2 Clean the filtered water outlet with a clean toothbrush and wipe off any contamination with a clean cloth.

Note: Do not use a used toothbrush, as it may transfer bacteria to the water outlet.

- 3 Clean the appliance with a moist cloth.

Note: Do not use a brush to clean the display.

- 4** Regularly clean the stainless steel screen and the unfiltered water inlet under a running tap with a clean and soft brush.

Replacement

Replacing the filter cartridge

New filter cartridges are available under type number WP3922.

Replace the filter cartridge if it is clogged to prevent damage to the water purifier.

No part of the cartridge can be reused. Discard the used cartridge and replace it with a new one.

When to replace the filter cartridge

The actual lifetime of the filter cartridge depends on the quality of the local water and the water pressure. For optimal performance of the water purifier, replace the filter cartridge if one of the following situations occurs:

- The display shows that the remaining filter capacity is 0 litres and keeps flashing.
- The hollow fibre of the filter cartridge (visible through the cartridge window) has turned rust brown or dark grey (see section 'Cartridge replacement indicator').
- You have used the filter cartridge for 6 months.
- The volume of purified water decreases substantially.
- The filtered water still has an unpleasant smell or is still turbid after purification.

Cartridge replacement indicator

To help you determine when to replace the filter cartridge, the water purifier and each replacement filter cartridge comes with a self-adhesive colour-coded cartridge replacement indicator. Place this replacement indicator in a convenient place for future reference.

Tip: Remove the cover of the filter cartridge and stick the cartridge replacement indicator to the inside of the cover. Check the colour of the

hollow fibre of the filter cartridge through the cartridge window from time to time. If the colour of the filter matches the rust brown or dark grey shown on the cartridge replacement indicator, replace the filter cartridge (Fig. 28).

Reduced filter cartridge life

The filter cartridge has a shorter life and should be replaced more frequently in the following situations:

- The water pressure is very low.
- The pipes and water tank are worn.
- The tap water is contaminated due to plumbing activities or cleaning of the water tank.
- When you use cloudy water immediately after heavy rain.

How to replace the filter cartridge

- 1** To replace the filter cartridge, close the tap and set the water selection lever to the unfiltered stream setting. (Fig. 23)
- 2** Tilt the used filter cartridge 90° backwards and pull it off the water purifier housing (Fig. 24).
- 3** Write down the replacement date on the information label of the new cartridge.
- 4** Tilt the new filter cartridge 90° backwards and insert it into the water purifier housing.
- 5** Pull the cartridge upwards until it is in upright position. (Fig. 25)
- 6** Reset the remaining filter capacity indication, see section 'How to reset the filter capacity' below.
 - Press the reset button for 2 seconds. The previously selected filter capacity flashes on the display.
 - If the new filter cartridge has the same capacity, simply wait until the setting stops flashing.
 - If the new filter has a different capacity, press the filter capacity selection button and keep it pressed until the display shows the new filter capacity. Then release the button and wait until the new setting stops flashing.


- 7** The water purifier starts counting down the remaining filter capacity as soon as you use the water purifier at the filtered spray setting.

How to reset the filter capacity

Note: Always reset the filter capacity when you replace the filter cartridge. This is necessary to set the remaining filter capacity back to its initial value (i.e. 1500, 900 or 600 litres).

- 1** Press the reset button for 2 seconds.
 - The previously selected filter capacity flashes on the display for a few seconds.
- 2** If the new filter cartridge has the same capacity, simply wait until the setting stops flashing.
- 3** If the new filter has a different capacity, press the filter capacity selection button and keep it pressed until the display shows the new filter capacity. Then release the button.
 - The selected filter capacity flashes on the display for 4 seconds and is then shown continuously for 5 seconds to indicate that the selected setting has been set.

Replacing the battery

The battery lasts approximately one year in case of normal domestic use. Replace the battery when the  symbol lights up and flashes. This appliance runs on 1 button-type CR2032 (3V) lithium battery, which is generally available.

- 1** Remove the water purifier from the tap.
- 2** Wipe the entire water purifier with a dry cloth.
- 3** Place the new battery (see 'Inserting the battery' in chapter 'Preparing for use').
- 4** Reattach the water purifier to the tap (see the installation instructions for your adapter type in chapter 'Preparing for use').

Note: When you replace the battery, the water purifier remembers the remaining filter capacity. If no battery is inserted in the water purifier, the remaining filter capacity is not counted down.

Environment

- Batteries contain substances that may pollute the environment. Do not throw away batteries with the normal household waste, but dispose of them at an official collection point for batteries. Always remove the batteries before you discard and hand in the appliance at an official collection point.
- Do not throw away the appliance with the normal household waste at the end of its life, but hand it in at an official collection point for recycling. By doing this, you help to preserve the environment (Fig. 29).

Guarantee & service

If you need service or information or if you have a problem, please visit the Philips website at **www.philips.com** or contact the Philips Customer Care Centre in your country (you find its phone number in the worldwide guarantee leaflet). If there is no Customer Care Centre in your country, go to your local Philips dealer or contact the Service Department of Philips Domestic Appliances and Personal Care BV.

Troubleshooting

This chapter summarises the most common problems you could encounter with the appliance. If you are unable to solve the problem with the information below, contact the Customer Care Centre in your country.


Problem	Solution
Water leaks from the attachment nut.	Perhaps you have not installed the water purifier properly. Reinstall the appliance according to the instructions in this user manual.

Problem	Solution
	Perhaps the attachment nut or the tap-mounting adapter is damaged. Contact an authorised Philips service centre.
	Perhaps the tap water pressure is higher than specified.
	You may need to wind some Teflon tape around the screw thread of the adapter.
The water flow is weak at the unfiltered setting.	Perhaps the stainless steel screen under the rubber washer inside the water purifier housing is clogged. Clean it with a soft brush and rinse it.
The water flow is weak at the filtered setting.	Perhaps the filter cartridge is clogged. Replace the filter cartridge.
	Perhaps the tap water pressure is lower than specified.
	Perhaps you are using a filter cartridge whose lifetime has expired. Replace the filter cartridge.
	Air may be trapped inside the filter cartridge. This may happen when you install a new filter cartridge. To avoid this, slightly open the tap for 30 seconds immediately after you install/replace the filter cartridge. The slow stream of water removes any air trapped in the filter.
The display is empty after I have replaced the battery.	Perhaps the tap water pressure is lower than specified.

Problem	Solution
	Perhaps the poles of the battery point in the wrong direction. Insert the battery in the correct way (see section 'Inserting the battery' in chapter 'Preparing for use').
	Perhaps the battery compartment cover is not properly fitted. Reattach the battery compartment cover in the correct way (see section 'Inserting the battery' in chapter 'Preparing for use').
	Perhaps the water purifier is set to the unfiltered spray setting or the unfiltered stream setting. In these cases, the display is off. The display only works when the water purifier is set to the filtered spray setting.
The display suddenly goes empty.	Perhaps the battery is low. Replace the battery.
	Perhaps the filter cartridge is clogged and the water flow is extremely low. Replace the filter cartridge.
The appliance makes a clicking sound when I use it at the filtered spray setting.	The clicking sound comes from the built-in flow meter and is normal.

Product specifications

Product name and type Pure water on tap WP3822
number

Type	Direct tap mount
Major filter components	Polysulphone hollow-fibre membrane, ion exchanger and granular activated carbon
Initial water flow rate	1.6L/min. (water pressure at 1kgf/cm ² , water temperature at 20°C)
Chlorine reduction capacity	1,500L (water density at 2ppm)
Turbidity reduction capacity	1,500L (water turbidity at 2NTU)
Soluble lead, pesticide (CAT) & VOC (Volatile Organic Compounds) reduction capacity	1,500L (water concentration at 0.1mg/l or less)
Filter lifetime	Approximately 3 months at 10L a day (the actual lifetime depends on the quality of the local water and the water pressure)
Replacement filter cartridge	WP3922
Minimum water pressure	0.7kgf/cm ² (7 metres of water column/ 70kPa)
Maximum water pressure	3.5kgf/cm ² (35 metres of water column/ 350kPa)
Accessories	WP3922 filter cartridge, 8 tap-mounting adapters, cartridge replacement indicator
Battery	lithium CR2032 (3V )
Appliance dimensions	112mm x 149mm x 93mm (H x W x D)
Packaging dimensions	140mm x 170mm x 88mm (H x W x D)

22 ENGLISH



Weight	Approximately 410g
Country of origin	Japan

* Above specifications are according to Japanese Industrial Standards (JIS) S 3201.

簡介

恭喜您購買本產品並歡迎加入飛利浦！請於 www.philips.com/welcome 註冊您的產品，來善用飛利浦提供的支援。

一般說明 (圖 1)

- A** 濾芯
- B** 淨水器外殼
- C** 濾芯容量選擇按鈕
- D** 電量不足指示燈
- E** 選定的濾芯容量指示燈
- F** 剩餘濾芯容量指示燈
- G** 重設按鈕
- H** 選水調整鈕
- I** 電池槽蓋
- J** 不鏽鋼網
- K** 橡膠墊圈
- L** 轉接頭
- 1** A 型
- 2** B 型
- 3** C 型
- 4** D 型
- M** 連接螺帽
- N** 過濾水出水口
- O** 未過濾水注水口
- P** 細顆粒狀活性碳與離子交換體
- Q** 中空絲膜
- R** 未過濾水出水口

重要事項

使用本產品前，請先仔細閱讀本使用手冊，並保留說明以供日後參考。

24 繁體中文

警示

- 本產品不適合供下列人士 (包括小孩) 使用：身體官能或心智能力退化者，或是經驗與使用知識缺乏者。他們需要有負責其安全的人員在旁監督，或指示產品的使用方法，方可使用。
- 請勿讓孩童將本產品當成玩具。

每日使用前

- 為防止濾芯快速阻塞，每回使用之前，請先在未過濾的設定下讓水流出約 5 秒時間。
- 若水管由於施工而造成水的顏色很深或者混濁，請先等待水清澈之後，再開始設定過濾水源。
- 每日使用之前，請先讓水從過濾的設定下流出 10 秒。
- 淨水器若有兩天以上不曾使用，請先讓水從過濾的設定下流出 60 秒。
- 淨水器若有兩週以上不曾使用，請先讓水從過濾的設定下流出 2-3 分鐘之後再使用。如果濾芯發出異味，請更換新濾芯。

水溫

- 通過淨水器的水請勿高於 50° C，否則可能會損壞產品。
- 請勿讓淨水器結冰。

電池

避免電池產生漏液、過熱或爆炸：

- 請勿自行拆卸電池。
- 請勿替電池充電。
- 請勿使用損壞的電池。
- 請勿將電池暴露於水面或濕度高的情況。
- 請勿讓電池直接暴露於陽光、高溫或火焰下。
- 任何電池漏液對眼睛和皮膚皆有害。避免接觸到眼睛和皮膚。

使用方法

- 本產品用途僅限於用來過濾符合飲用水標準的水。
- 請勿堵住過濾水出水口，或連接其它裝置。
- 如果水壓非常高，請減少水龍頭的水流量，以免損壞濾芯。
- 淨水器請保持遠離熱源，以免變形或損壞。
- 請勿改裝淨水器。

- 使用淨水器時請勿取出濾芯。
- 尚未安裝濾芯前，請勿使用淨水器。
- 請勿將淨水器置於窗戶附近，使其直接曝曬在陽光下。
- 本產品無法軟化水質。
- 請勿將過濾後的水用於水族箱。自來水無論過濾與否，對魚類都可能有害。
- 請勿儲存濾淨後的水，以免水質遭受污染。空氣的接觸會快速污染濾淨後的水，若您想儲存濾淨後的水，請使用乾淨的容器然後將其放入冰箱內。在冰箱中，請勿放置超過 1 天以上，以免遭受污染。

功能

- 飛利浦的多重過濾系統共計有主要過濾層、輔助過濾層、高科技的中空絲膜過濾層、離子交換體濾層，和細顆粒狀活性碳過濾層。
- 中空絲膜含有超過 3,000 億個微孔，小到足以去除小至 0.1 微米的顆粒。能去掉自來水中 99.99%* 的細菌、鐵 與大於微孔尺寸的其它微粒，並留下人體所需的鈣、鎂等等礦物質 (* 依照日本淨水器協會 (JWPA) 標準測試通過)。
- 離子交換過濾層可去除溶解性鉛。
- 顆粒狀活性碳能夠去除加氯消毒產生的有害副產品以及有害的工業污染物 (例如揮發性有機化學物)、農用污染物 (例如 CAT 殺蟲劑)，還能去除自來水中氯所造成的不好氣味與味道。
- 淨水器上的 LCD 顯示螢幕會顯示目前 剩餘濾芯容量。若剩餘濾芯容量為 0，這表示您必須更換濾芯。飛利浦獨特的濾芯更換指示條也可以協助您決定何時 該更換 濾芯。
- 每分鐘 1.6 公升的高速初期流速，立即給您充沛的淨水。
- 選水調整鈕提供三種水流選擇：未過濾噴水、未過濾水流或已過濾噴水。
- 淨水器隨附八種安裝於水龍頭使用的轉接頭，幾乎所有類型的水龍頭都可輕鬆安裝。
- 採取卡栓型的安裝方式，能確保更換濾芯的過程快速、簡易並且牢固。

使用前準備

裝入電池

- 裝入電池前，請確認您的雙手和淨水器都是乾的。
 - 請遠離廚房水槽，避免電池掉進排水管。
 - 裝入電池後，再將淨水器裝到水龍頭。
- 1** 用一枚硬幣，將淨水器背面的電池槽蓋往「開啟」方向轉動。移除電池槽蓋。(圖 2)
 - 2** 將(隨附)電池置入槽蓋，正(+)極要面向電池槽蓋。(圖 3)
 - 3** 將電池槽蓋放回淨水器，讓蓋子上「▲」的標記對齊淨水器上的「I」標記。(圖 4)
 - 4** 用一枚硬幣，將電池槽蓋往「關閉」方向轉動，直到蓋子上的「I」標記對齊淨水器上的「I」標記。(圖 5)

注意：請確認「I」標記正確對齊，否則電池室可能會進水。

- ▶ 在正確裝入電池後，LCD 顯示螢幕會執行自我檢測，約歷時 9 秒，然後顯示螢幕會再度熄滅。

安裝之前

水龍頭的螺紋非常銳利。

- 在您安裝本淨水器之前，請先確定安裝於水龍頭所需的轉接頭都已備齊。
- 水龍頭的直徑必須為 13 - 25 公釐。
- 請判斷您的水龍頭屬於哪種類型，再選取適當的轉接頭。
- 隨附的轉接頭讓本淨水器幾乎適用於所有廚房水龍頭。然而，本淨水器可能無法適合某些少見類型的水龍頭。
- 自來水水壓必須在 0.7kgf/cm² (7 公尺水柱/70kPa) 到 3.5kgf/cm² (35 公尺水柱/350kPa) 之間。若您以此範圍以外的水壓使用本淨水器，則過濾後的水流可能極小，或者淨水器會受損。

安裝 A 型轉接頭

- 適合直徑為 16 公釐、17.5 公釐或 19 公釐的圓口水龍頭。(圖 6)
- 1** 將連接螺帽與轉接頭從淨水器外殼取下。(圖 7)

- 2** 將連接螺帽穿過水龍頭的口。(圖 8)
- 3** 在水龍頭的口端放置相符的轉接頭 (A 型)。16 公釐轉接頭與淨水器一同包裝。若有需要，請依照水龍頭的直徑，更換為適合的 17.5 公釐轉接頭或 19 公釐轉接頭。(圖 9)
- 4** 將連接螺帽牢固地鎖在淨水器外殼上。(圖 10)
安裝 B 型轉接頭
 - 適合裝有濾水網罩的水龍頭 (螺紋在外)。(圖 11)
- 1** 將連接螺帽與轉接頭從淨水器取下。(圖 7)
- 2** 將濾水網罩的外蓋從水龍頭取下，再將連接螺帽穿過水龍頭的口。取出原有的轉接頭，將相符的轉接頭 (B 型) 鎖到水龍頭上。(圖 12)
- 3** 用硬幣將轉接頭鎖得更緊。(圖 13)
- 4** 將連接螺帽牢固地鎖在淨水器外殼上。(圖 14)
安裝 C 型轉接頭
 - 適合裝有濾水網罩的水龍頭 (螺紋在外)。(圖 15)
- 1** 將連接螺帽與轉接頭從淨水器外殼取下。(圖 7)
- 2** 將濾水網罩的外蓋從水龍頭取下。取出原有的轉接頭，利用連接螺帽將相符的轉接頭 (C 型) 鎖到水龍頭上。如果漏水，請在轉接頭的螺紋四周纏繞鐵弗龍膠帶，再鎖到水龍頭上。(圖 16)
- 3** 用硬幣將轉接頭鎖得更緊。(圖 17)
- 4** 將連接螺帽牢固地鎖在淨水器外殼上。(圖 18)
安裝 D 型轉接頭
 - 適合 A、B 或 C 型以外的水龍頭。(圖 19)
- 1** 將連接螺帽與轉接頭從淨水器外殼取下。(圖 7)
- 2** 取出原有的轉接頭，將 D 型轉接頭鎖到淨水器的外殼。(圖 20)
- 3** 將淨水器外殼從下方推到水龍頭上，再將 4 枚螺絲釘平均地鎖緊。(圖 21)

28 繁體中文

4 將連接螺帽牢固地鎖在淨水器外殼上。(圖 22)

請務必將橡膠墊圈牢固地推壓至水龍頭上，以防止漏水。

安裝濾芯

1 請確定水龍頭有關緊。

2 將選水調整鈕調到未過濾水流的位置。(圖 23)

3 將濾芯向後傾斜 90°，插入淨水器外殼。(圖 24)

4 將濾芯往上拉，成直立狀態。(圖 25)

5 濾芯內的空氣會影響淨水器水流速度。為避免此現象，請於安裝/更換濾芯之後將水龍頭轉開一些，讓水通過濾芯達 30 秒。小小的流水可幫助您除去濾芯內的空氣。

設定濾芯容量

安裝第一顆濾芯時，請遵照下列指示啟動濾芯容量倒數計數。

此淨水器的預設濾芯容量為 1500 公升。WP3822 隨附的濾芯容量為 1500 公升。

1 請確定淨水器外殼與濾芯已安裝正確。

2 按下濾芯容量選擇 按鈕

預設的 1500 公升濾芯容量會在顯示畫面閃爍 4 秒，之後再連續顯示 5 秒，表示已經設定所選設定。

注意：若您在淨水器看見另一個顯示的濾芯容量，請再次按下濾芯容量選擇按鈕，直到顯示螢幕出現您的濾芯容量 (1500、900 或 600 公升)。所選的容量會閃爍 4 秒，之後再連續顯示 5 秒，表示已經設定所選設定。

注意：首次以及以後每次更換濾芯時，請按照「更換」單元的「如何重設濾芯容量」所述，重設濾芯容量。

使用此電器

1 將選水調整鈕轉到想要的設定 (會聽見「喀噠」一聲)。

選水調整鈕有 3 種設定：已過濾噴水、未過濾噴水，以及未過濾水流。請參閱下方單元。

2 打開水龍頭。

已過濾噴水

此項設定適合用來飲用、清洗蔬果或烹調。

1 轉動選水調整鈕，直到已過濾噴水的符號對齊指針。(圖 26)

在此設定下，請勿讓超過 50° C 的水通過淨水器，否則可能會損壞淨水器。

如果過濾的水溫介於 35° C 到 50° C 之間，水可能會發出不好的氣味。原本濾芯在過濾過程中會將此氣味吸收，但若過濾的水溫超過 35° C，則又會重新釋放出來。

2 打開水龍頭。

- 已過濾噴水從淨水器流出。
- 此畫面會開啟並倒數濾芯的剩餘容量。

注意：LCD 顯示螢幕只會在您於已過濾噴水設定下使用淨水器，而且當水壓高於所需的 0.7kgf/cm² (7 公尺水柱/70kPa) 最低要求時，顯示剩餘濾芯容量。

注意：當您沒有使用淨水器，還有在未過濾噴水和未過濾水流設定下使用淨水器時，顯示螢幕會關閉。

未過濾噴水

此項設定適合用來清洗碗盤或需要輕柔水流的其它工作。

1 轉動選水調整鈕，直到未過濾噴水的符號對齊指針。(圖 27)

在此設定下，請勿讓超過 50° C 的水通過淨水器，否則可能會損壞淨水器。

未過濾水流

此項設定適合需要強大水流的情形。

1 轉動選水調整鈕，直到未過濾水流的符號對齊指針。(圖 23)

在此設定下，請勿讓超過 50° C 的水通過淨水器，否則可能會損壞淨水器。

清潔

絕對不可使用鋼絲絨、去垢劑、磨蝕性的清潔劑或侵蝕性的液體(例如稀釋劑、酒精、汽油或丙酮)清潔本產品。這類物質可能會造成龜裂、褪色或變形。

- 1 在您清洗本產品前，請確定電池槽蓋確實關閉。
- 2 請使用乾淨的牙刷清潔過濾水出水口，然後再以乾淨的布擦拭污垢。

注意：請勿使用已用過的牙刷，以防牙刷上的細菌傳到出水口。

- 3 請用濕布清潔本產品。

注意：請勿使用清潔刷清潔螢幕。

- 4 請定期使用乾淨的軟刷在水龍頭下清潔不鏽鋼網以及未過濾水注水口。

更換

更換濾芯

添購新濾芯時請指明型號 WP3922。

濾芯若已阻塞請立即更換，以免傷害淨水器。

濾芯無法重複使用，請丟棄使用過的濾芯，並且換上新的濾芯。

何時需要更換濾芯？

濾芯實際使用壽命取決於所在地區的水質和水壓。為使淨水器發揮最佳效果，若有下列其中情形，請更換濾芯：

- 螢幕顯示 剩餘濾芯容量為 0 公升並一直閃爍。
- 濾芯的空心纖維 (可透過濾芯的窗口看見) 呈現鏽棕或深灰色 (請參閱「濾芯更換指示條」)。
- 濾芯已使用 6 個月。
- 淨化後的水量大幅減少。
- 過濾後的水仍有不好的氣味，或淨化後依然混濁。

濾芯更換指示條

為了幫助您判斷何時應當更換濾芯，淨水器和每支替換用的濾芯都附有以色彩表示的自黏式濾芯更換指示條。請將這個更換指示條貼在方便的位置，以利日後參考。

提示：您可以取下濾芯的蓋子，將濾芯更換指示條貼在蓋子的內側。請不時透過濾芯的窗口查看裡頭的空心纖維呈現何種色澤。如果濾芯的顏色符合濾芯更換指示條所示的鏽棕或深灰色，請更換濾芯。(圖 28)

濾芯使用壽命縮短

下列情況會導致濾芯壽命減短並且需要更常更換濾芯：

- 水壓非常低。
- 水管和水塔損壞。
- 抽水或清潔水塔時，自來水遭受污染。
- 大雨過後立即使用混濁的水。

如何更換濾芯

- 1** 若要更換濾芯，請關閉水龍頭，將選水調整鈕調到未過濾水流的設定。(圖 23)
- 2** 將用過的濾芯向後傾斜 90°，從淨水器外殼中抽出。(圖 24)
- 3** 在新濾芯的記錄標籤上註明更換日期。
- 4** 將新的濾芯向後傾斜 90°，插入淨水器外殼。
- 5** 將濾芯往上拉，成直立狀態。(圖 25)
- 6** 重設 剩餘濾芯 容量標示，請參閱以下「如何重設濾芯容量」小節。
 - 按住重設按鈕 2 秒鐘。螢幕上會閃爍之前選定的濾芯容量。
 - 若新的濾芯容量相同，只要等到設定停止閃爍即可。
 - 若新的濾芯容量不同，請按下濾芯容量選擇 按鈕不放，直到螢幕顯示新的濾芯容量為止。然後放開按鈕等到新設定停止閃爍為止。
- 7** 只要您在已過濾噴水設定中使用淨水器，淨水器便會開始倒數剩餘濾芯容量。


32 繁體中文

如何重設濾芯容量

注意：每次更換濾芯時，請重設濾芯容量。您需要將剩餘濾芯容量設回初始數值 (即是 1500、900 或 600 公升)。

- 1 按住按鈕 2 秒鐘。
▶ 之前選定的 濾芯容量 會在螢幕上閃爍幾秒鐘。
- 2 若新的濾芯容量相同，只要等到設定停止閃爍即可。
- 3 若新的濾芯容量不同，請按下濾芯容量選擇 按鈕不放，直到螢幕顯示新的濾芯容量為止。然後放開按鈕。
▶ 選定的 濾芯容量 會在顯示畫面閃爍 4 秒，之後再連續顯示 5 秒，表示已經設定所選設定。

重新更換電池

在正常的居家使用情況下，電池可以維持約一年之久。在  符號亮起並閃爍時，請更換電池。本產品使用 1 顆鈕釦型 CR2032 (3V) 鋰電池，非常容易取得。

- 1 將淨水器從水龍頭取下。
- 2 使用乾布擦拭整部淨水器。
- 3 放入新的電池 (請參閱「使用前準備」一章的「裝入電池」)。
- 4 重新將淨水器接到水龍頭 (請參閱「使用前準備」一章的轉接頭種類安裝說明)。

注意：更換電池時，淨水器仍舊會記憶剩餘濾芯 容量。若淨水器沒有裝入電池，將不會倒數剩餘濾芯容量。

環境保護

- 電池內含可能會污染環境的物質，請勿與一般家庭廢棄物一併丟棄，應送至政府指定的電池回收點進行回收。若要丟棄本產品，也請將電池取出，再將產品送至政府指定的回收點。
 - 本產品壽命結束時請勿與一般家庭廢棄物一併丟棄。請將該產品放置於政府指定的回收站，此舉能為環保盡一份心力。
- (圖 29)

保固與服務


若您需要相關服務或資訊，或是有任何問題，請瀏覽飛利浦網站，網址為 www.philips.com，或連絡您當地的飛利浦顧客服務中心 (您可以在全球保證書上找到連絡電話)。若您當地沒有顧客服務中心，請洽詢當地的飛利浦經銷商，或與飛利浦小家電服務部門聯繫。

故障排除

本單元概述您使用本產品時最常遇到的問題。如果您無法利用以下資訊解決您遇到的問題，請聯絡您所在國家/地區的顧客服務中心。

問題	解決方法
水從連接螺帽漏出。	可能是您的淨水器並未安裝正確。請依照本使用手冊的指示，重新安裝產品。
	可能是連接螺帽或安裝於水龍頭的轉接頭已經損壞。請洽飛利浦授權之服務中心。
	可能是自來水壓高過指定值。
	您可能需要在轉接頭的螺紋四周纏繞一些鐵弗龍膠帶。
未過濾的設定下水流很弱。	可能是因為在淨水器外殼內部、橡膠墊圈下方的不鏽鋼網阻塞所致。請以軟刷清潔後再用水沖洗乾淨。
過濾的設定下水流很弱。	可能是因為濾芯已阻塞。請更換濾芯。
	可能是自來水壓低於指定值。
	可能是您使用的濾芯已過期，請更換濾芯。

問題	解決方法
	<p>可能是濾芯內的空氣影響淨水器水流速度。安裝新的濾芯之後便可能產生此現象。為了避免，請於安裝/更換濾芯之後立即將水龍頭轉開一些，讓水通過濾芯達 30 秒。小小的流量能夠幫助您除去濾芯內的空氣。</p>
更換電池後，螢幕一片空白。	<p>可能是自來水壓低於指定值。</p> <p>也許電池電極放錯方向。請正確安裝電池 (請參閱「使用前準備」一章的「裝入電池」)。</p> <p>也許電池槽蓋沒有確實裝好。重新以正確方式蓋好電池槽蓋 (請參閱「使用前準備」一章的「裝入電池」)。</p> <p>也許淨水器設定成未過濾噴水或未過濾水流。在這些情況下，螢幕會關閉。只有在淨水器設定為已過濾噴水，螢幕才會顯示。</p>
螢幕突然沒有畫面。	<p>可能是電池電量不足。請更換電池。</p> <p>可能是因為濾芯已阻塞，水流極小。請更換濾芯。</p>
在已過濾噴水設定下使用淨水器時，會發出喀啦聲。	<p>喀啦聲來自內建的水流儀表，這是正常。</p>
產品規格	
產品名稱與機型編號	自來水淨水器 WP3822
類型	直接安裝於水龍頭

主要過濾零件	聚硫樹脂中空絲膜、離子交換器與顆粒狀活性碳
初期水流速	每分鐘 1.6 公升 (水壓 1kgf/cm ² ，水溫 20° C)
氯成分降低容量	1,500 公升 (水密度 2ppm)
濁度降低容量	1,500 公升 (水濁度 2NTU)
溶解性鉛、殺蟲劑 (CAT) 與 VOC (揮發性有機物質) 降低容量	1,500 公升 (水濃度 0.1mg/l 或以下)
濾芯使用壽命	每日 10 公升，使用壽命約 3 個月 (實際壽命依照當地水質與水壓不同)
替換用濾芯	WP3922
最低水壓	0.7kgf/cm ² (7 公尺水柱/70kPa)
最高水壓	3.5kgf/cm ² (35 公尺水柱/350kPa)
配件	WP3922 濾芯、8 個安裝於水龍頭使用的轉接頭、濾芯更換指示條
電池	鋰電池 CR2032 (3V )
產品尺寸	112 公釐 x 149 公釐 x 93 公釐 (高 x 寬 x 深)
包裝尺寸	140 公釐 x 170 公釐 x 88 公釐 (高 x 寬 x 深)
重量	約 410 公克
產地	日本

* 以上規格係根據日本工業標準 (JIS) S 3201。

