



使用說明書 User Manual

1-7
8-14

目錄

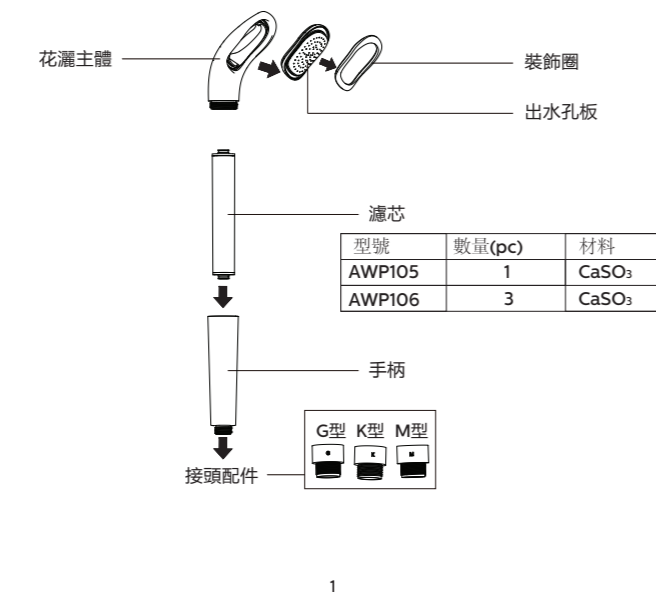
1 產品功能	1
2 結構示意圖	1
3 安裝示意圖	2
4 安裝使用方法	2-3
5 注意事項	3-4
6 維護保養	5-6
7 故障診斷	7
8 產品保修服務指南	7
9 裝箱清單	7



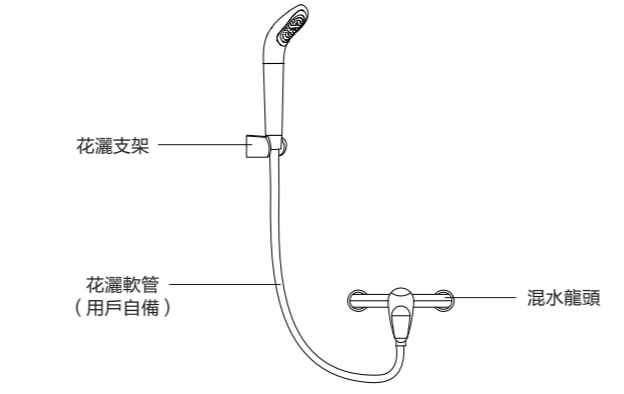
1 產品介紹

本產品是具有淨水功能的花灑，AWP1705型淨水花灑可以過濾水中餘氯及顆粒雜質。
注：本產品無需上門安裝，請用戶根據本說明書自行安裝。

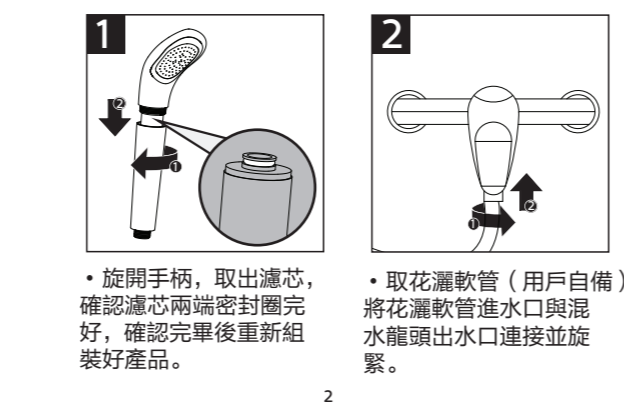
2 結構示意圖



3 安裝示意圖



4 安裝使用方法



5 注意事項

· 使用本產品之前，請仔細閱讀本說明書，並妥善保管以備日後參考

警告

- 使用進水水質為市政自來水（不明水源地請勿使用）；
- 本產品適用水壓為0.15-0.35MPa；
- 本淨水花灑進水溫度要求5-60℃，進水溫度超過60℃可能損壞密封件導致漏水；進水溫度低於5℃，可能造成冰凍，引起管道破裂，導致漏水；
- 本產品過濾後的水嚴禁飲用。

6 維護保養

注意

清潔本產品用清水即可，切勿使用鋼絲絨，研磨性清潔劑或腐蝕性液體（例如汽油或丙酮）來清潔。

清潔時，請勿將其液體倒入濾芯，以免濾芯過濾系統損壞。

日常維護

如果三天以上未使用淨水花灑，再次使用時，請打開混水龍頭，將前20秒過濾的水放掉。

如果超過一星期不使用淨水花灑，請斷開水源，並將濾芯拆下密封好，放在冰箱保鮮室保存，再次使用時，請將過濾的1min的水放掉。

環保

棄置產品時，請不要將其與一般生活垃圾堆放在一起；應將其交給官方指定的回收點。這樣做有利於環保。

濾芯更換

請根據建議更換週期定期更換濾芯。新的濾芯可從飛利浦經銷商處或經授權的飛利浦服務中心獲得，其供應型號為AWP105/AWP106。

濾芯更換對照表：

淨水花灑型號	對應濾芯型號	建議更換週期
AWP1705	AWP105	1-2個月左右
AWP1705	AWP106	

僅可使用原裝飛利浦濾芯進行更換。

7 故障診斷

故障現象	故障可能的原因	故障解決方法
淨水花灑出水流量明顯變小	混水龍頭未完全打開	打開混水龍頭
	水壓過低	待水壓恢復正常再進行使用
出水水質差	濾芯失效	請更換濾芯
	自來水水質差	確認自來水符合市政自來水的要求
漏水	螺紋連接處未旋緊	按正確的安裝方法重新安裝
	零部件有損壞	請與售後服務人員聯繫

8 產品保修服務指南

從購買日期起，產品擁有兩年保固期。如果您需要更多資訊，請訪問：www.Philips.com。

*在購買日期後兩年內，凡經本公司特約維修站人員確認為正常使用情況下，因制作工艺或元器件造成之損壞，您都將獲得免費保修服務。

此免費服務不包括需時常更換的易耗零配件（淨水器濾芯、淨水壺濾芯、活性炭、樹脂、超濾膜片等）、輔助裝置、運輸費及維修人員上門服務費。維修時請攜同購買憑證正本方為有效。

以下情況將不能獲得免費服務

1. 使用不當引起的人為損壞，例如接入不適當配件、不適當之安裝、不依說明書使用、錯誤使用或疏忽而造成之損壞。
2. 因運輸及其他意外而造成之損壞。
3. 非經本公司認可之維修和改裝。
4. 其他因不可抗力（如自然災害、電壓異常等）造成的損壞。
5. 一般家庭以外使用（如工業、商業用等）而造成的損壞。
6. 正常使用引起的產品老化、磨損等，但不影響產品的正常使用。

該說明作為在規定期限及條件之內進行免費維修的宣貫，並不限制消費者的法定權利

9 裝箱清單

AWP1705	
淨水花灑	1 ×
CaSO ₃ 濾芯	1 ×
接頭配件 (G、K、M)	各1
說明書	1 ×

請妥善保管使用本說明書

9 裝箱清單

CONTENTS

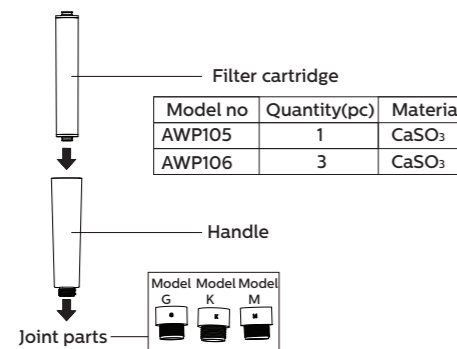
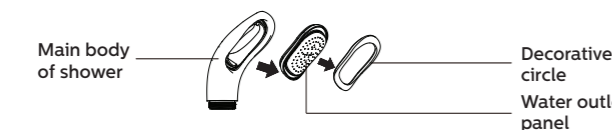
1 Product Introduction	8
2 Product Structure	8
3 Installation Illustration	9
4 Installation Usage Instruction	9-10
5 Precautions	10-11
6 Maintenance and Servicing	12-13
7 Trouble Shooting	13
8 Product Warranty Service Guide	14
9 Packing List	14

1. Product Introduction

This product is a shower with water filtration function. AWP1705 model water filtration shower can filtrate residual chlorine and impurities in water.

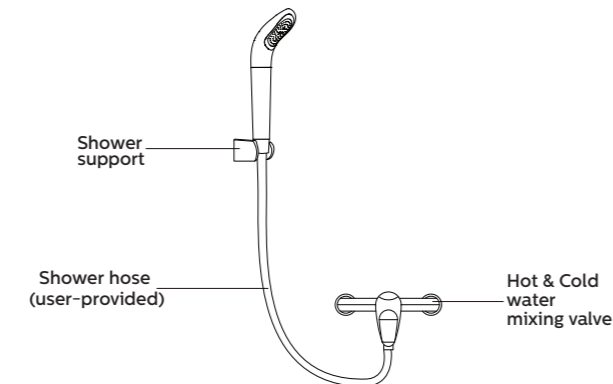
Note: This product does not need the door-to-door installation. Please install according to the user manual.

2. Product Structure

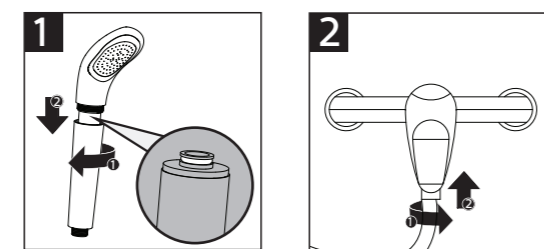


8

3. Installation Illustration

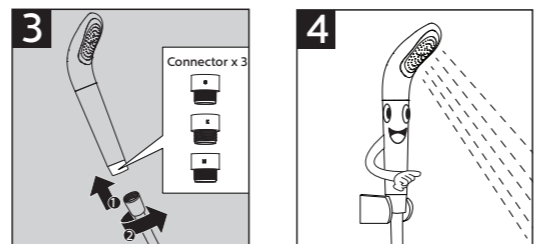


4. Installation and Usage Instruction



- Release the handle, take out the filter cartridge, confirm that the sealing rings at both ends are intact, then reassemble the product after confirmation.
- Take the shower hose (user-provided), connect the water inlet of shower hose with the water outlet of mixing valve and tighten it.

9



- Connect the outlet of shower hose to the inlet of shower and tighten. If it cannot be connected directly, please reselect the appropriate joint (G/K/M) to connect with the shower hose;
- Turn on the mixing valve and run the water for 1-2 minutes to check for any leakage from the connection of each thread. If no leakage found, turn off the valve. Then installation is completed, place the shower head on the shower support for later use.

5. Precautions

- Please read this manual carefully before the first use and keep it properly for future reference.

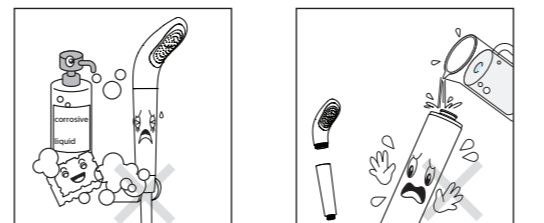
Warning

- Please use the municipal tap water as the inlet water. (Please do not use any water of unknown source).
- Working water pressure of the product should be 0.15-0.35MPa;
- The inlet water temperature of this shower head should be 5-60°C as required. If the inlet water temperature exceeds 60°C, the seal may be damaged, causing water leakage. If the inlet water temperature is lower than 5°C, the freezing conditions may occur, causing pipeline rupture and water leakage.
- Do not drink the water directly filtered by this product.

10

Attention

- ❗ Do not clean the product with steel wool, abrasive cleaner or corrosive liquid. (such as gasoline or acetone)
- ❗ When cleaning, do not pour any other liquid into the filter cartridge to avoid damaging the filter system.



Environmental protection

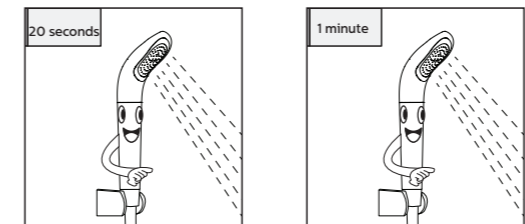
- When disposing of the product, please do not stack it together with the general domestic garbage. It should be recycled by means of the recovery method as designated by the environmental protection department to support the earth's environmental protection.

11

6. Maintenance and Servicing

Routine maintenance

- ❗ If the shower head is not used for more than 3 days, please turn on the water mixing valve and run the water for 20 seconds before use.
- ❗ If the shower head is not been used for more than a week, please disconnect it from the water source, store it in the fresh room of refrigerator (do not store in the refrigerating chamber). Run the water for 1 minute before use.



Replacement of filter cartridge

- Please replace the cartridge on a regular basis depending on the recommended replacement cycle. The new filter cartridge can be purchased from Philips dealers or authorized Philips service center.

Comparison table for replacement of the filter cartridge:

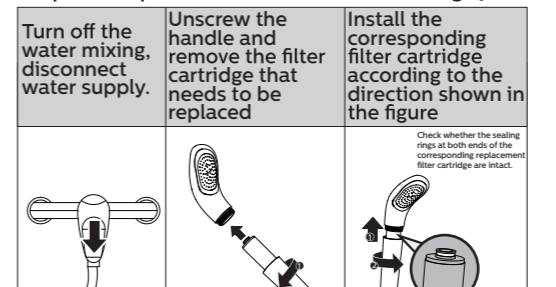
Model of shower head	Model of corresponding filter cartridge	Recommended replacement cycle
AWP1705	AWP105 (1pc/ pack)	About 1-2 months.
AWP1705	AWP106 (3pcs/ pack)	

- ❗ It can only be replaced with the original Philips filter cartridge.

12

- The recommended replacement cycle of the filter cartridge is an average is based on the average indicator of different local tap water quality and the consumption or ordinary households. If the local water quality is below the average indicator, the actual life of the cartridge will differ from the recommended life. If the filter cartridge is blocked and fails, please consider to replace the filter.

Steps for replacement of the filter cartridge:



- Tighten the handle, turn on the water mixing valve run the water for 2 minutes and place the water filtration shower on the shower support for next use.

7. Trouble Shooting

Fault	Possible cause	Solution
The water flow rate has obviously decreased	The mixing valve is not fully turned on. The water pressure is too low.	Fully turn on the water mixing valve. Wait until the water pressure returns to normal before use.
Poor quality of outlet water	The filter cartridge fails. The quality of tap water is poor.	Replace the filter cartridge. Check the quality of tap water.
Water leakage	The thread connection is not screwed tightly. The parts and components are damaged.	Re-install according to the correct installation instruction. Please contact the consumer care service.

13

8. Product Warranty Service Guide

This product includes a two-year warranty from the date of purchase. If you need more information, please visit: www.Philips.com. Within two years from the date of purchase, you will receive free warranty service for any damage caused by the manufacturing process or components under normal operation confirmed by our maintenance service. The warranty service does not include frequent replaced consumable components (water purifier filter, pitcher filter, granular activated carbon, ion exchange resin, hollow fiber membrane, etc.), auxiliary devices, transportation fee and door-to-door service. Please show the proof of purchase to the service personnel during maintenance.

- You cannot receive free warranty service under the following conditions:
1. Damage caused by improper operation, such as improper components connection, improper installation, deprived of manual use, misoperation.
 2. Negligence and damage because of transportation or other accident.
 3. Maintenance and modification without approval.
 4. Other damage caused by force majeure (such as natural disaster, abnormal voltage, etc).
 5. Damage caused by general use outside home (e.g. industrial and commercial use).
 6. Aging, wear and tear caused by normal operation of the product without affecting normal operation of the product.

This statement serves as a publicity for free maintenance within the specified time limit and conditions, and does not limit the legal rights of consumers.

9. Packing List

AWP1705	
Shower head assemble	1×
CaSO ₃ filter cartridge	1×
Joint parts (G, K, M)	1 each
User manual	1×

Please keep this instruction manual in a safe place.

14



Visit us: www.philips.com/welcome

Specifications are subject to change without notice.
© 2019 AquaShield
All rights reserved.
The Philips trademark and the Philips Shield Emblem are registered trademarks of Koninklijke Philips N.V. used under license.
This product has been manufactured by and is sold under the responsibility of Hong Kong AquaShield Health Technology Company Limited and Hong Kong AquaShield Health Technology Company Limited is the warrantor in relation to this product.
Rev A Mar 19

