

PHILIPS

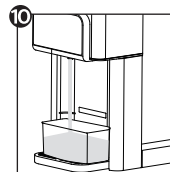
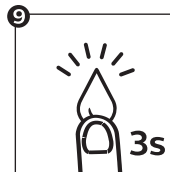
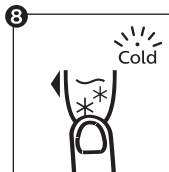
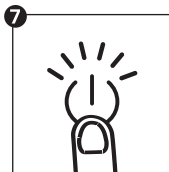
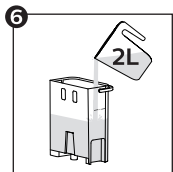
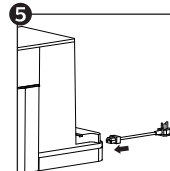
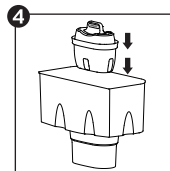
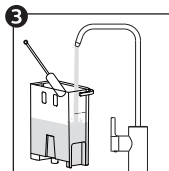
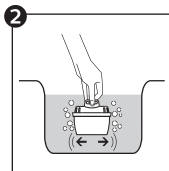
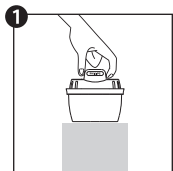
All-in-One Water
Dispenser

ADD5980M

Read this First !

Quick Start Guide & FAQs

First time cleaning



10 * Dispense water till the water tank is empty.

User interface



On/Off Button

Press to activate the appliance. Long press for 3 seconds to deactivate the appliance.



Safety Lock

When hot water $\geq 40^{\circ}\text{C}$ is chosen, press to unlock before pressing the dispense button. Press to lock the appliance.



Dispense Button

Press to start or stop dispensing. Long press for 3 seconds to continuously dispense 1L of water.



Descal Indicator/Button

Lights up when it is time to descale. Long press for 3 seconds to start the descaling process. During descaling, press Dispense Button to pause, and press Descal or Dispense Button to restart.



Water Temperature Selection



Water Volume Selection



Cooling Indicator

Lights up when the water is being cooled and turns off when the cooling is done.



Water Shortage Indicator



Filter Lifetime Indicator

Switch off the cooling system



Long press both buttons for 3 seconds to turn off/turn on the cooling system.

After the cooling system is turned off, select cold water temperature to dispense ambient water.

The lifetime of the filter cartridge

Model	Suggested Replacement Cycle
AWP210/AWP211/AWP212	After 100 liters or every 30 days, whichever comes first.

Filter lifetime indicator flashes: the filter is about to reach the end of life.

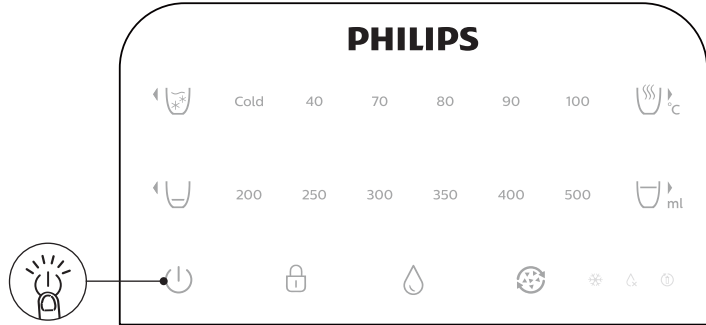
Filter lifetime indicator lights up constantly: the filter reaches the end of life.



Filter Lifetime Reset

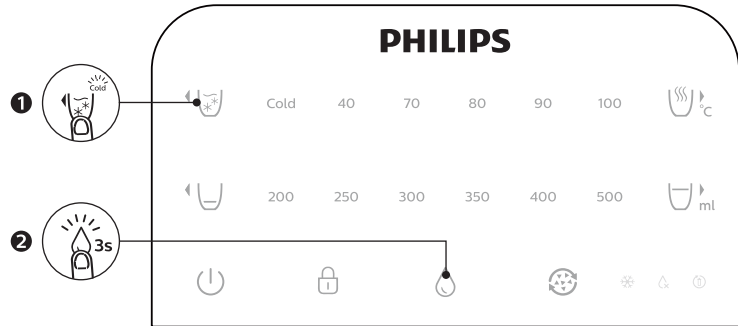
Long press both buttons for 3 seconds to reset the filter lifetime.

How to switch the appliance on/off ?



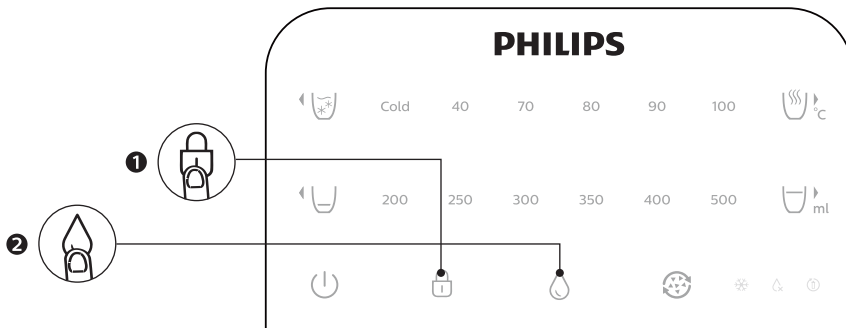
- Press the On/Off button to activate the appliance.
- Long press the On/Off button for 3 seconds to deactivate the appliance.

How to fill the internal water tank ? (and start the cooling process)



- Press the Water Temperature Selection button until “Cold” is selected.
- Press the Dispense button for 3 seconds to continuously dispense 1L of water.

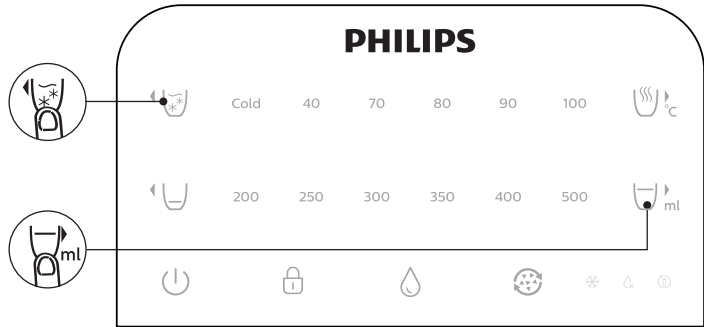
How to dispense water ?





- When hot water $\geq 40^{\circ}\text{C}$ is chosen, press the Safety Lock button to unlock.
- Press the Dispense button to start or stop dispensing.

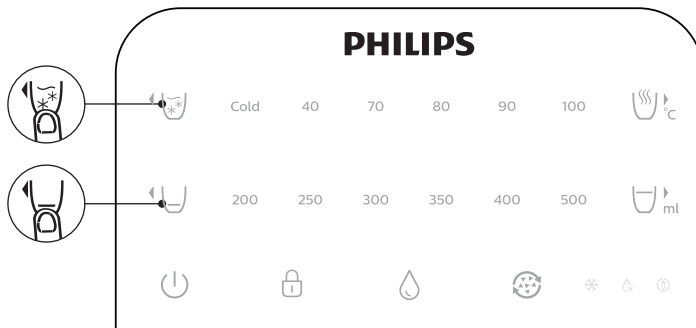
How to switch off the cooling system ?



(will stop noise produced by cooling fans)



- Long press both buttons   for 3 seconds to turn off/turn on the cooling system.
- With the cooling system off, and temperature on setting "cold", the appliance will dispense water of ambient temperature, instead of chilled water.

How to reset the filter lifetime indicator?



- Long press both buttons   for 3 seconds to reset the filter lifetime.



Register your product and learn more in the website link below:

www.philips.com/water

Specifications are subject to change without notice

© 2021 AquaShield

All rights reserved.

The Philips trademark and the Philips Shield Emblem are registered trademarks of Koninklijke Philips N.V. used under license.

This product has been manufactured by and is sold under the responsibility of Hong Kong AquaShield Health Technology Company Limited and Hong Kong AquaShield Health Technology Company Limited is the warrantor in relation to this product.

Rev A APR 21

