

# PHILIPS

## Water Solutions

Under-the-sink filtration

AUT3234



User manual 1-9

説明書 11-19



# Contents

---

I. Product Introduction	1
-------------------------	---

---

II. Product Specifications	1
----------------------------	---

---

III. Product overview and installation illustration	1
---	---

---

IV. Installation	2
Installing the filters	2
Installing the battery	2
Installing the three-way ball valve	3
Installing the faucet	3
Installing the system	3

---

V. Using the system	4
First-time use	4
User interface	4

---

---

VI. Maintenance	5
Routine maintenance	5
Filter lifetime	5
Filter cartridge replacement	6
Battery replacement	7

---

VII. Precautions	7
Warning	7
Notes	7

---

VIII. Troubleshooting	8
-----------------------	---

---

IX. Guarantee & Service	9
-------------------------	---

---

X. Packaging list	9
-------------------	---

---

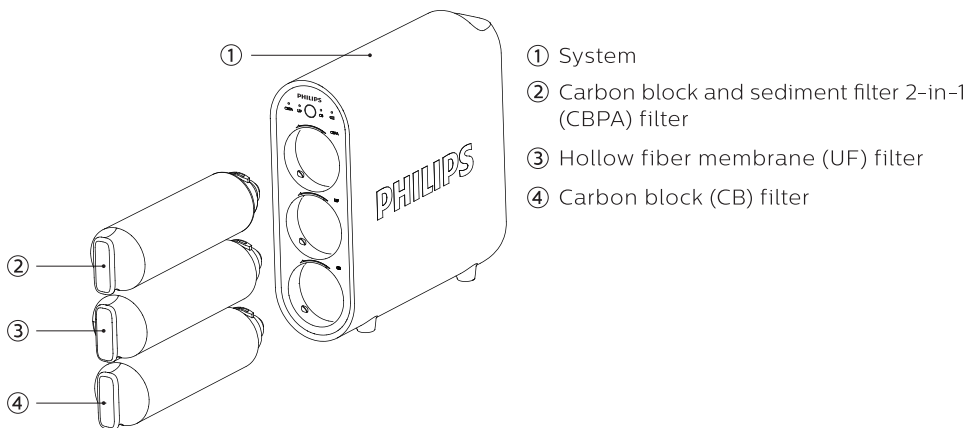
## I. Product Introduction

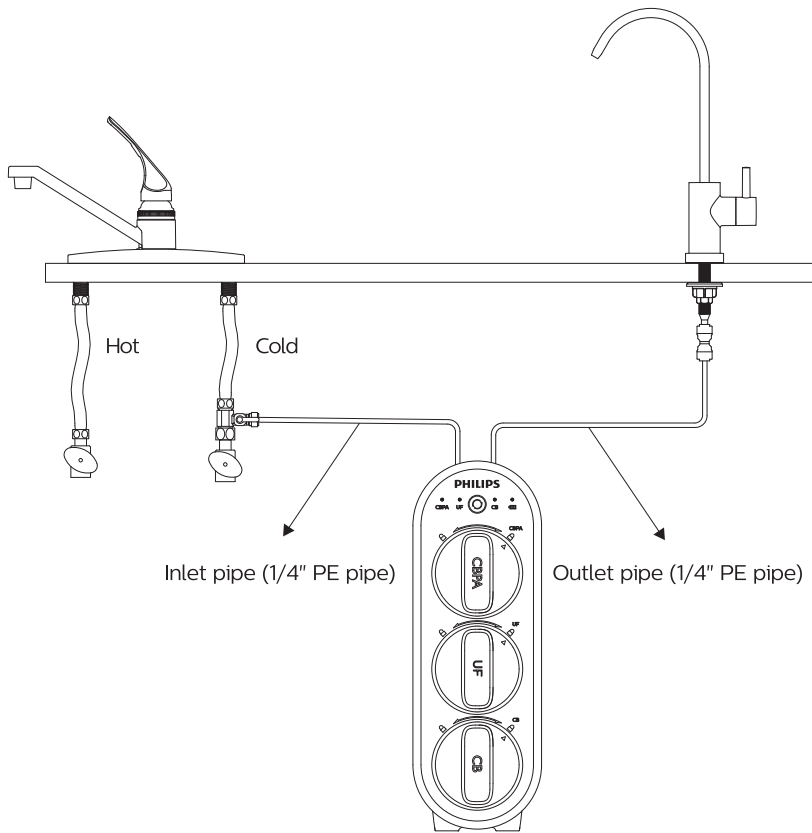
Thank you for choosing Philips. Philips under-the-sink water filtration system AUT3234 comes with 4-stage ultrafiltration, which effectively reduces particles, heavy metals, VOCs, pesticides, bacteria, and pollutants down to 0.1 micron while retaining beneficial minerals at the same time.

## II. Product Specification

Product name	Philips under-the-sink water filtration system
Product model	AUT3234
Water flow rate	2 liters/minute
Filtration capacity	CBPA filter (AUT805): 4000L UF filter (AUT825): 8000L CB filter (AUT806): 4000L
Inlet water pressure	0.1-0.4 MPa
Inlet water temperature	5°C-38°C
Applicable water source	Municipal tap water

## III. Product overview and installation illustration

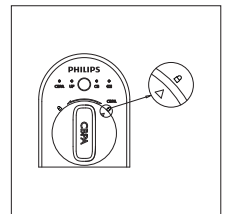




## IV. Installation

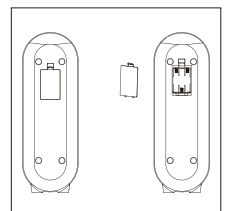
### 1. Installing the filters

Filters were already installed before your purchase. Please check whether the filters are installed properly – the triangle icon on the filter should be pointing at the lock icon on the system.



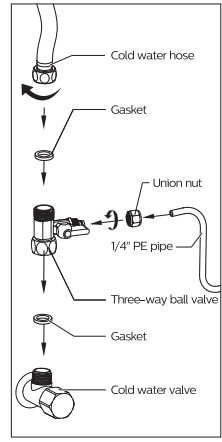
### 2. Installing the battery (purchase separately)

Remove the cover of the battery case, and put 3 pieces of Alkaline AAA batteries in line with the positive and negative marks on the battery case. After installing the batteries, put the cover back.



### 3. Installing the three-way ball valve

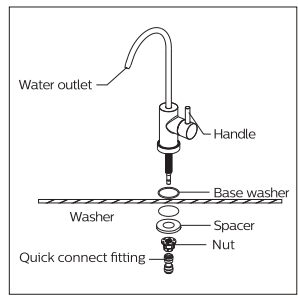
- a. Turn off the cold water valve. Disconnect the cold water hose from the cold water valve.
- b. Install the three-way ball valve to the cold water valve, and screw it tightly. Please don't miss the gasket on the three-way ball valve during installation.
- c. Connect the cold water hose with the three-way ball valve and screw it tightly. Please don't miss the gasket on the cold water hose during installation.



### 4. Installing the faucet

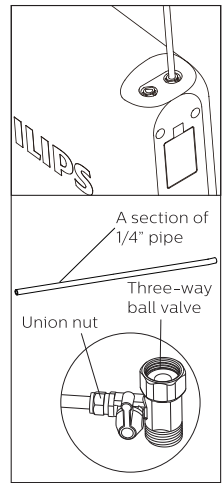
Selects an appropriate installation position. Make sure the faucet sits flat on top of the sink or countertop surface. Drill a hole with a diameter of about 25mm. Skip this step if there is already a hole on the sink.

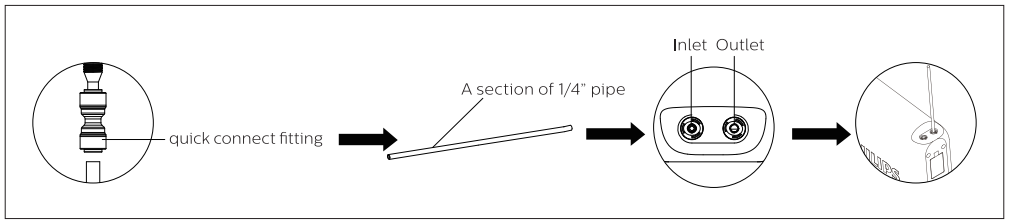
Install the faucet according to the diagram. Screw the faucet stem nut all the way up the faucet stem and tighten to secure the faucet. From underneath the sink, hand-tighten the faucet quick connect fitting onto the faucet stem.



### 5. Installing the system

- a. **Connect with the water inlet**  
Cut a 1/4" pipe which is about 20cm long. Insert one end of the pipe into the inlet hole of the system until it stops. Insert the other end of the pipe into the three-way ball valve nut until it stops.
- b. **Connect with the water outlet and the faucet**  
Cut a 1/4" pipe which is about 20cm long. Insert one end of the pipe into the quick connect fitting of the faucet until it stops. Insert the other end of the pipe into the outlet hole of the system until it stops.
- c. **Check if the system is installed properly**  
Turn on the cold water valve and the three-way ball valve. Check for leaks before leaving installation.



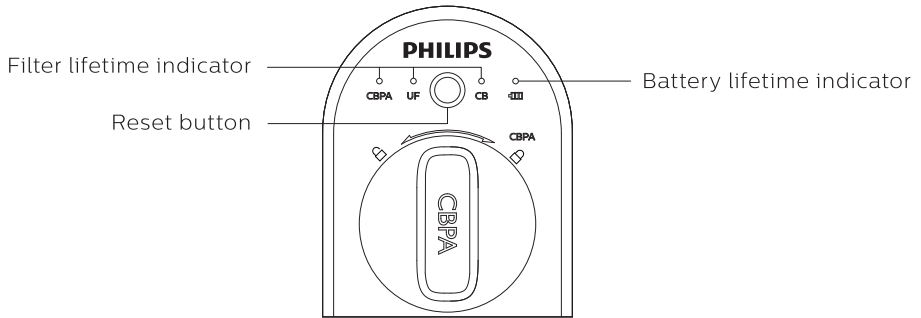


## V. Using the system

### First-time use

- a. Turn on the faucet.
- b. Let water run for 10 minutes to flush air and carbon fines (very fine black powder).

### User interface



When the system is connected with power, you will hear a beep, and all indicators will light up. If there's no operations within 30 seconds, the system will turn into standby mode, and the indicators will be off.

When the system is in standby mode, press the reset button and all the indicators will light up to show filter lifetime and battery lifetime.

When the faucet is turned on, all the indicators will light up to show filter lifetime and battery lifetime. The indicators will be off in 30 seconds, or when the faucet is turned off.

#### a. Filter lifetime indicator

Status	How long will the filter last	Remaining filtration capacity	Reminder	
			Indicator	Alert
Normal	More than 7 days	More than 70 liters	Blue light	N/A
Alert	Less than 7 days	Less than 70 liters	Flashing blue light	Beeps for 3 times whenever the faucet is turned on

## b. Battery lifetime indicator

Status	Reminder	
	Indicator	Alert
Normal	Blue light	N/A
Alert	Flashing blue light	Beeps for 3 times whenever the faucet is turned on.

## c. Reset button

### Resetting filter lifetime

Long press the reset button for 5 seconds. You will hear a beep, and the indicator of CBPA filter lifetime flashes blue. Press the reset button again for 1 second to select the filter that needs to be reset.

When the indicator of the selected filter flashes, long-press the reset button for 3 seconds. You will hear a beep, and the indicator will turn constant blue light. This means it has been reset successfully.

## VI. Maintenance

### Routine maintenance

- If the system is not used for more than 2 days, turn on the faucet and allow the water to run for at least 5 minutes to flush the filters.
- If the system will not be used for more than one week, take out the filter cartridges, seal them with plastic wraps, and store them in the refrigerator (not in the freezer). Allow the water to run for at least 10 minutes before using them again.
- If you will not use the system for a long time, please cut off the water supply, and remove the batteries. Turn on the faucet to release the internal pressure and avoid damage to the device before using it again.

### Filter lifetime

Filter type	Model	Filter replacement
CBPA	AUT805	6-12 months*
UF	AUT825	24 months*
CB	AUT806	6-12 months*



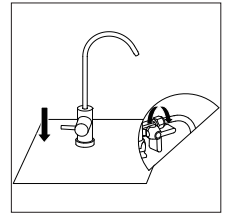
**Notes:**

\* The actual lifetime of filter cartridge depends on the local tap water quality and daily usage. The recommended replacement period is an average based on different local tap water quality. If the local tap water quality is below than the average, the actual lifetime of the cartridge would differ from the recommended replacement time. If the filter cartridge is blocked, please replace it.

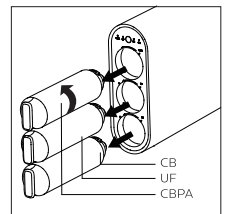
This system can only work with Philips filters.

**Filter cartridge replacement**

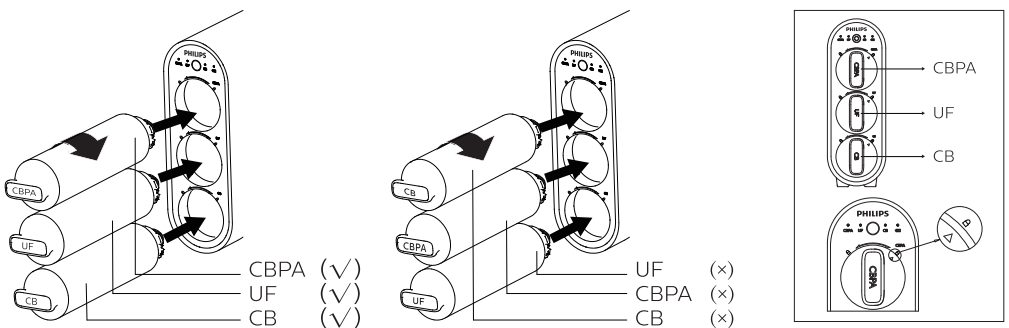
a. Turn off the three-way ball valve but turn on the faucet and allow water to drain from the hose.



b. Turn the filter that needs to be replaced anticlockwise.



c. Remove the packaging of the new filter, and insert it in the system. Turn it clockwise to align the triangle icon on the filter with the lock icon on the system.



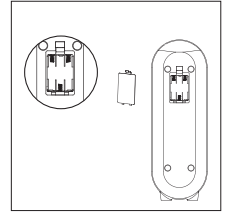
d. Please make sure you insert the new filters in the correct order of the filter placement.

**Notes:**

- a. After replacing the filter, turn on the three-way ball valve, and then allow the water to run for 5 minutes.
- b. Reset the filter lifetime according to chapter V.

## Battery replacement

If you hear 3 beeps when you turn on the faucet, please have a check on the indicators. If the battery lifetime indicator flashes, replace with new batteries as soon as possible.



## VII. Precautions

### Warning

- Always use municipal tap water as the water source. Do not use with water that is microbiologically unsafe or unknown quality without adequate disinfection before or after the device.
- Keep the system away from children.
- Be sure to handle the system gently and carefully. Do not attempt to modify or repair the system yourself, otherwise the warranty becomes invalid.
- This device is intended for domestic use only.
- Do not install this system on a water supply with a water pressure exceeding 0.4MPa. If the inlet water pressure exceeds 0.4MPa, a relief valve must be installed, which needs to be purchased separately.
- The inlet temperature is 5-38°C. When the inlet temperature exceeds 38°C, the filter might be damaged. If the inlet water temperature is lower than 5°C, it may cause freezing and rupture, resulting in water leakage.
- Do not reverse the installation order of the system to avoid affecting the filtration performance.
- If the system is abnormal, stop using it. Remove the batteries, and turn off the water supply. Contact the after-sales personnel for further inspection.
- This system is designed to only work with Philips filters. Using filters of other brands will void the warranty.

### Notes

- The system and installation shall comply with applicable local regulations.
- The contaminants or other substances removed or reduced by this system are not necessarily in all user's water.
- For the best performance, please change your filter cartridge based on the filter replacement period suggested in chapter VI. When a significantly lower flow rate is observed, we recommend to change the filters.
- This system should be placed on a stable and flat surface.
- Keep the device away from heat.
- The information of this user manual is subject to change without prior notice to the users.

## VIII. Troubleshooting

Problem	Possible causes	Solution
The flow rate of filtered water gets slower	Filters are blocked.	Please replace the filters.
	Inlet water pressure is low.	Please install a pump before the system, or wait until the water pressure gets stable.
	Cold water valve, three-way ball valve, or the faucet is not completely turned on.	Fully turn on all valves and the faucet.
Leakage	Pipes or filters are not installed properly.	Reinstall the system according to chapter IV.
	Components are damaged.	Please contact the after-sales service.
There is no water coming out from the faucet	The connection of the inlet and outlet pipe is incorrect.	Please make sure the inlet pipe is connected to the three-way ball valve, while the outlet pipe is connected to the faucet.
	Filters are blocked.	Please replace the filters.
	Filters are not installed properly.	Reinstall the filters according to chapter VI.
Poor outlet water quality	The filters have expired.	Please replace the filters.
	The device hasn't been used for more than 3 days.	Allow water to run for 5-10 minutes before using it again.
	The quality of the inlet water is poor.	Please ensure to only use tap water as the water source.
Indicators don't work after installing the batteries	The batteries are not installed properly.	Reinstall the batteries.
	The voltage is low.	Please replace with new batteries.

## IX. Guarantee & Service

If you need information or if you have any problems, please visit [www.philips.com](http://www.philips.com) or contact the customer care center in your country. If there is no customer care center in your country, go to a local dealer. Within two years from the date of purchase, you will receive free warranty service for any damage caused by the manufacturing process, or components under normal operation confirmed by our maintenance service. The warranty service does not include frequently replaced consumable components, auxiliary devices, transportation fees, and door-to-door service. Please show the proof of purchase to the service personnel during maintenance.

## X. Packaging list

System	1x
CBPA filter	1x
UF filter	1x
CB filter	1x
Three-way ball valve	1x
1/4" PE pipe	1x
Faucet	1x
User manual	1x
Quick start guide	1x

## 目錄

---

I. 產品介紹	11	VI. 維修保養	15
II. 產品規格	11	日常維護	15
III. 產品結構與安裝圖示	11	濾芯壽命	15
IV. 產品安裝	12	更換濾芯	16
濾芯安裝	12	電池更換	17
電池安裝	12	VII. 注意事項	17
安裝三通球閥	13	警告	17
龍頭安裝	13	注意	17
淨水器安裝	13	VIII. 故障診斷	18
V. 產品使用	14	IX. 保固與服務	18
首次使用	14	X. 裝箱清單	19
用戶界面	14		

---

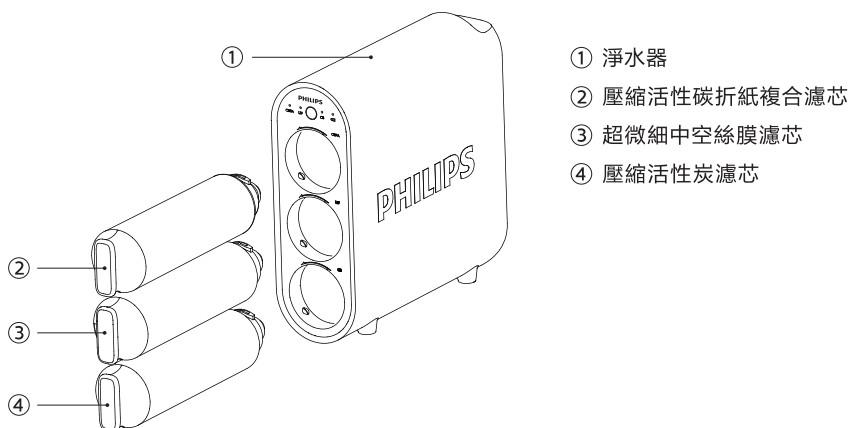
## I. 產品介紹

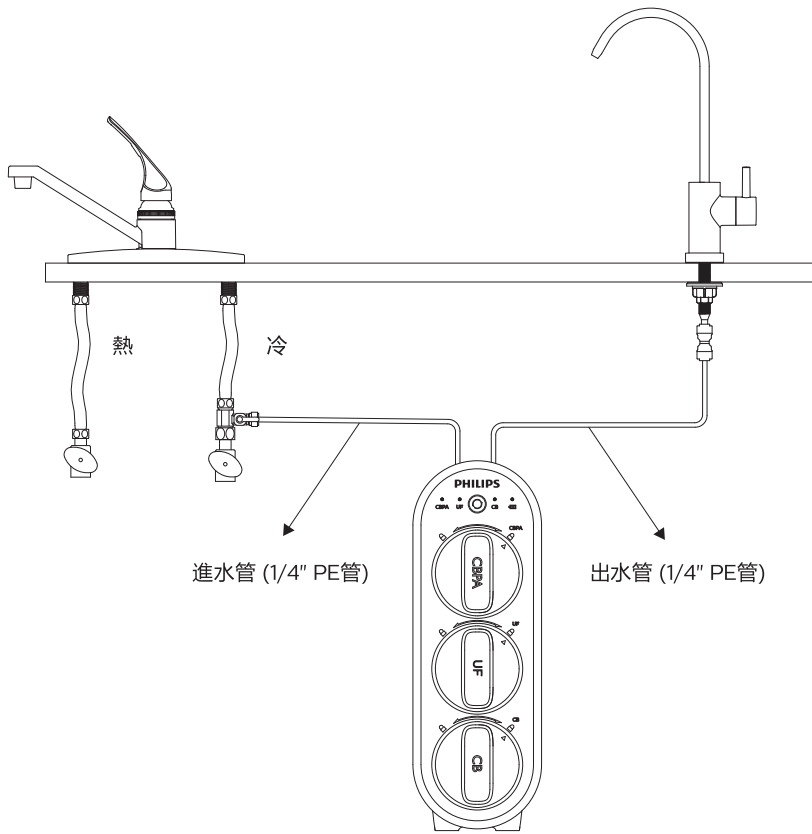
感謝您選擇飛利浦。飛利浦櫥下式淨水器AUT3234搭載四重超濾過濾系統，有效去除顆粒物、重金屬、揮發性有機化合物、農藥、細菌以及小至0.1微米的污染物，同時保留有益礦物質。

## II. 產品規格

產品名稱	飛利浦櫥下式淨水器
產品型號	AUT3234
流速	2 公升/分鐘
總淨水量	CBPA 濾芯 (AUT805): 4000L UF 濾芯 (AUT825): 8000L CB 濾芯 (AUT806): 4000L
適用進水水壓	0.1-0.4 MPa
適用進水溫度	5°C-38°C
適用水源	市政自來水

## III. 產品結構與安裝圖示

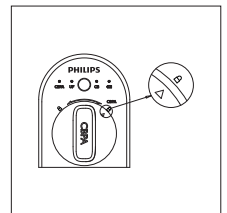




## IV. 產品安裝

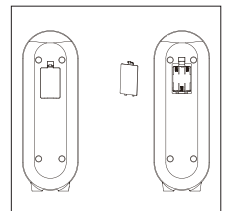
### 1. 濾芯安裝

當您購買本產品時濾芯已安裝至淨水器內，請檢查濾芯是否已安裝到位，如圖示三角標與鎖緊位對應時說明濾芯安裝到位。



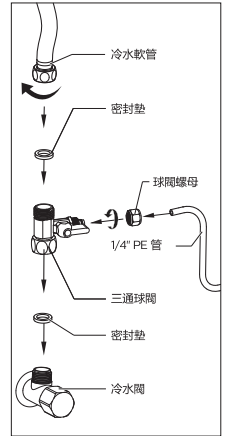
### 2. 電池安裝 (需自行購買)

取出電池盒蓋，裝入三顆鹼性AAA電池，電池正負極需一一對應。安裝完畢後，將電池盒蓋蓋回原處。



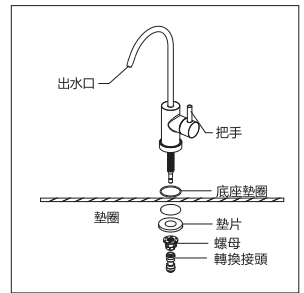
### 3. 安裝三通球閥

- a. 關閉冷水閥，將冷水軟管從冷水閥上擰出。
- b. 將三通球閥安裝至冷水閥上，並將其擰緊，安裝時，請勿遺漏三通球閥上的密封墊。
- c. 將冷水軟管安裝在三通球閥上，並將其擰緊，安裝時，請勿遺漏三通球閥上的密封墊。



### 4. 龍頭安裝

在水槽或者檯面上選擇合適的安裝位置，安裝位置需平整，鑽一個直徑約為25mm的孔，如在檯面上已有這個孔，請忽略這一步驟。龍頭按圖示安裝——將龍頭桿上的螺母一直擰到水龍頭桿上，並擰緊以固定龍頭。從水槽下面，用手將龍頭轉換接頭擰緊到龍頭桿上。



### 5. 淨水器安裝

#### a. 進水管安裝

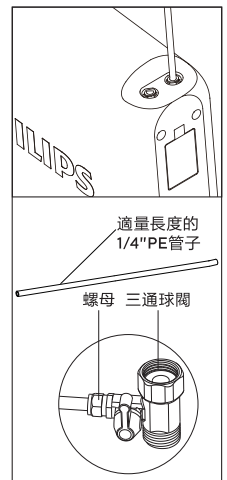
將配套的1/4"PE管切下一段適量長度（約為20cm），將PE管的一端套入螺母後與三通角閥接頭連接，另外一端插進淨水器中的進水口直到插到底。

#### b. 出水管安裝

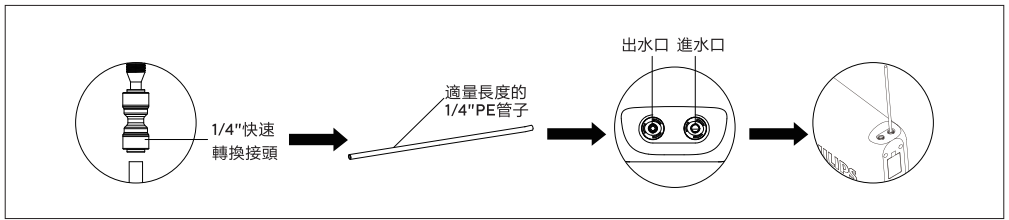
將配套的1/4"PE管切下一段適量長度（約為20cm），將PE管的一端與龍頭的快速接頭連接，另一端插進淨水器中的出水口直到插到底。

#### c. 檢查淨水器是否安裝到位

打開冷水閥與三通球閥開關，檢查安裝完畢後是否存在漏水現象。





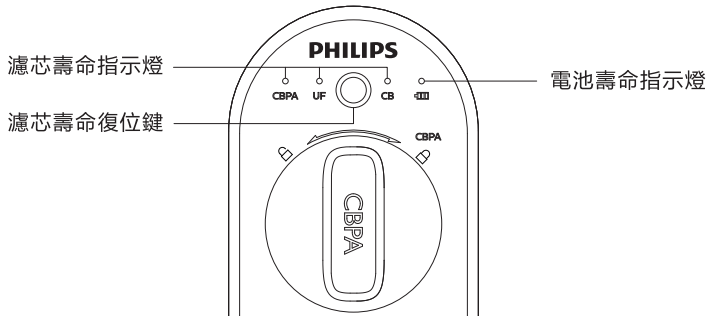


## V. 產品使用

### 首次使用

- a. 打開龍頭。
- b. 放出10分鐘淨水以便排出淨水器中的空氣和（細小的）活性炭粉末微粒。

### 用戶界面



當淨水器通電時，蜂鳴短鳴與此同時所有指示燈同時亮起。如果30秒內無任何操作，淨水器將進入待機模式，屏幕熄滅。

當淨水器進入待機模式時，短按復位按鍵，所有指示燈亮，顯示濾芯壽命與電池壽命的當前狀態。

龍頭通水時，所有指示燈亮，顯示濾芯壽命與電池壽命的當前狀態。如果30秒內無任何操作或關閉龍頭，屏幕熄滅。

#### a. 濾芯壽命顯示燈

壽命階段	剩餘可使用時間	剩餘淨水量	提示方式	
			壽命指示燈	蜂鳴器
正常	多於7天	大於70公升	常亮藍燈	無提醒
預警	少於或等於7天	少於或等於70公升	閃爍藍燈	打開龍頭，鳴叫3聲

b. 電池壽命顯示燈

壽命階段	提示方式	
	壽命指示燈	蜂鳴器
正常	常亮藍燈	無提醒
預警	閃爍藍燈	龍頭通水時，鳴叫3聲

c. 濾芯壽命復位按鍵

濾芯壽命復位

長按復位按鍵5秒蜂鳴器鳴叫1聲，第一級CBPA濾芯壽命指示燈藍色閃爍，再短按復位鍵1秒，進入濾芯選擇模式，一次選擇所需復位的濾芯。

當復位濾芯指示燈處於閃爍狀態下，長按復位按鍵3秒，蜂鳴器鳴叫1聲，濾芯指示燈變為藍色常亮，復位成功。

## VI. 維修保養

### 日常維護

- 若淨水器超過2天未使用，再次使用前請打開龍頭，放出淨水至少五分鐘以便沖洗濾芯。
- 若淨水器超過一周未使用，取出濾芯，將其用保鮮膜密封放置冰箱內（請勿放置於結冰格內）。再次使用前請打開龍頭，放出淨水至少10分鐘。
- 當長時間不使用淨水器時，請切斷水源並且取出電池。再次使用前請打開龍頭，放出淨水以釋放內部氣壓避免損壞淨水器。

### 濾芯壽命

濾芯	型號	更換周期
CBPA	AUT805	6-12 個月*
UF	AUT825	24 個月*
CB	AUT806	6-12 個月*

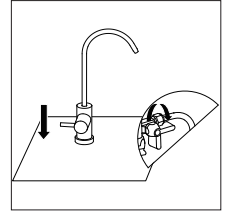
注意:

\* 各濾芯的實際使用壽命取決於當地自來水水質和每天使用量。本淨水器所建議的各濾芯更換週期是根據各地自來水的使用情況的平均數值，實際濾芯使用壽命可能與建議更換週期存在差異。若濾芯過早堵塞或失效，請立即更換濾芯。

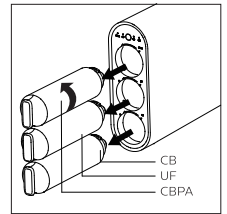
本淨水器僅適配飛利浦濾芯。

### 更換濾芯

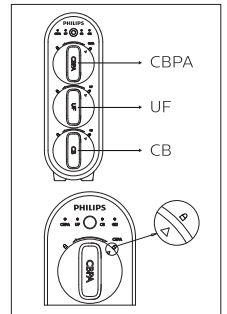
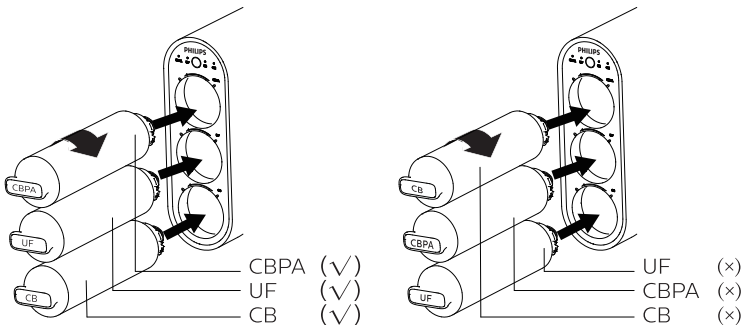
a. 關閉三通球閥但打開龍頭讓水從軟管中流出。



b. 逆時針旋出需要更換的濾芯。



c. 撕開濾芯收縮膜後將新的濾芯依照各自在淨水器中的位置（三角標與鎖緊位所對應的位置）順時針旋入淨水器內。



d. 請確保將濾芯放置於相應的正確位置上。

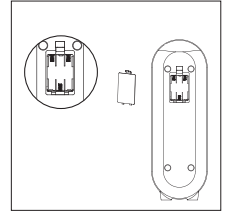
注意:

a. 濾芯更換完畢後，打開三通球閥，放出淨水五分鐘。

b. 根據第V章進行濾芯壽命復位。

## 電池更換

打開龍頭後聽到間斷鳴叫請查看指示燈。如果電池壽命顯示燈閃爍，請盡快更換電池。



## VII. 注意事項

### 警告

- 本產品適用水源為市政自來水，不明水源請勿使用。
- 應看管好兒童，遠離本產品。
- 請注意輕拿輕放本產品。切勿自行拆卸、改裝機器，否則不在保修條款內。
- 本產品僅限於家庭用水。
- 切勿將本淨水器安裝在水壓超過0.4MPa的供水管線上。若進水水壓超過0.4MPa，必須加裝減壓閥（需另行購買）。
- 本水器進水溫度要求5~38℃水溫度超過38℃可能損壞密封件導致漏水；進水溫度低於5℃，可能造成冰凍，引起管道破裂，導致漏水。
- 淨水器濾芯安裝順序切勿顛倒以免影響淨水器過濾性能。
- 如果淨水器工作異常，請立即停止使用，取出電池，切斷水源，聯繫售後客服作進一步檢測。
- 本淨水器只適用於飛利浦濾芯，適用其他品牌的濾芯不符合本產品的售後條例。

### 注意

- 本淨水器系統與安裝步驟需符合當地法規。
- 本淨水器所宣稱的去除或減少污染物的效能不一定適用於所有地區使用者所處地區的水源。
- 為保持本淨水器的最佳性能，請根據第VI章所描述的建議更換濾芯期限更換濾芯。若發現本淨水器流速明顯降低，建議您立即更換濾芯。
- 請將本產品平穩放置。
- 本淨水器請保持遠離熱源以免變形或損壞。
- 若本說明書所涉及的訊息進行變更，請恕不另行通知。

## VIII. 故障診斷

故障	原因	解決方法
淨水流量減少	濾芯堵塞	更換濾芯
	進水壓力過小	安裝增壓泵或待水壓正常後再使用
	冷水閥、三通球閥或鵝頸龍頭未全開	將各閥門全部打開
漏水	管路或濾芯未安裝到位	根據第IV章的安裝方法重新安裝
	零部件有損壞	請與售後服務人員聯繫
不出水	進水管接錯	確定淨水器進水口與快接三通閥相連，出水口與水龍頭相連
	濾芯堵塞	更換濾芯
	濾芯未安裝到位	根據第VI章的安裝方法重新安裝
出水水質差	濾芯失效	更換濾芯
	長期停用（3天以上）	衝洗5-10分鐘
	自來水水質差	確認自來水符合市政自來水的要求
裝上電池後， 指示燈不亮	電池安裝不正確	取下電池並重新安裝
	電池電壓不足	更換新電池

## IX. 保固與服務

若您需要相關服務或資訊，或是有任何問題，請瀏覽飛利浦網站，網址為[www.philips.com/water](http://www.philips.com/water)或聯絡您當地的飛利浦顧客服務中心。若您當地沒有顧客服務中心，請洽詢當地的飛利浦經銷商。從購買日期後兩年內，產品擁有兩年保固期。在購買日期後兩年內，凡經本公司特約維修站人員確認為正常使用情況下，因製作工藝或元器件造成之損壞，您都將獲得免費保修服務。此免費服務不包括需時常更換的易耗零配件、輔助裝置、運輸費及維修上門服務費。維修請攜同購買憑證正本方為有效。

## X. 裝箱清單

淨水器	1x
CBPA 濾芯	1x
UF 濾芯	1x
CB 濾芯	1x
三通球閥	1x
1/4" PE管	1x
鵝頸龍頭	1x
說明書	1x
快速入門指南	1x





**Specifications are subject to change without notice**  
**[www.philips.com/water](http://www.philips.com/water)**

© 2020 AquaShield

All rights reserved.

The Philips trademark and the Philips Shield Emblem are registered trademarks of Koninklijke Philips N.V. used under license.

This product has been manufactured by and is sold under the responsibility of Hong Kong AquaShield Health Technology Company Limited and Hong Kong AquaShield Health Technology Company Limited is the warrantor in relation to this product.

Rev A JUL 20

