

PHILIPS

Water Solutions

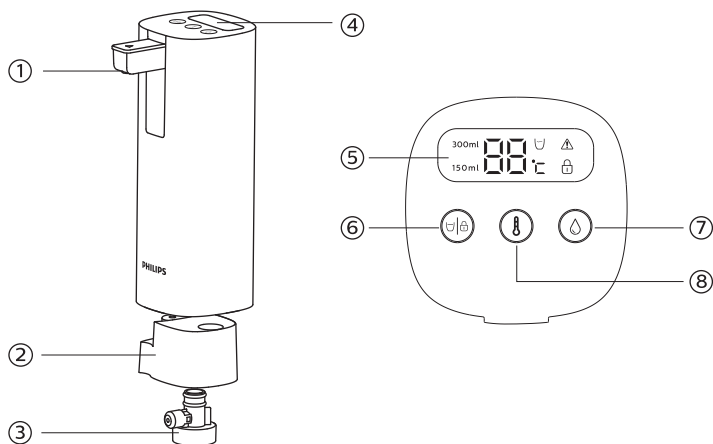
Dispenser

ADD4810

ADD4811



User Manual



EN

- ① Water outlet
- ② Base
- ③ Bottle water adapter*
- ④ ⑤ Display
- ⑥ Water volume/safety-lock button
- ⑦ Water dispense button
- ⑧ Water temperature button

TC

- ① 出水口
- ② 底座
- ③ 水樽適配器*
- ④ ⑤ 顯示屏
- ⑥ 水量/安全鎖定按鍵
- ⑦ 取水按鍵
- ⑧ 水溫按鍵

*Apply to most of the bottled water brands in the market

*適用於市面上大部分樽裝水品牌

Important

Read this important information carefully before you use the appliance and save it for future reference

Warning

Never immerse the appliance in water or any other liquid, nor rinse it under the tap.

- Check if the voltage indicated on the appliance corresponds to the local mains voltage before you connect the appliance.
- Do not use the appliance if the plug, the main cord or the appliance itself is damaged.
- If the main cord is damaged, you must have it replaced by a manufacturer authorized customer care center or similarly qualified persons in order to avoid hazards.
- This appliance can be used by children aged from 8 years and above and persons with reduced physical, sensory or mental capabilities or lack of experience and knowledge if they have been given supervision or instruction concerning use of the appliance in a safe way and understand the hazards involved. Children shall not play with the appliance. Cleaning and user maintenance shall not be made by children unless they are older than 8 years and supervised. Keep the appliance and its cord out of reach of children less than 8 years. Keep the mains cord away from hot surfaces.
- Only connect the appliance to an earthed wall socket.
- Always make sure that the plug is inserted into the wall socket properly.
- Always place and use the appliance on a dry, stable, level and horizontal surface.
- Keep the device away from direct sunlight, or any other heating sources.
- Keep your hands and face at a safe distance from the steam and from the water outlet.
- The accessible surfaces may become hot during use.

Caution

- Always return the appliance to a customer care center authorized by the manufacturer for examination or repair. Do not attempt to repair the appliance yourself, otherwise the warranty becomes invalid.
- Always unplug the appliance after use.
- Do not use the appliance for any other purpose than described in the user manual and use only original accessories.
- The applicable water source of this device is purified water or distilled water. Never use this device to heat liquids such as beverages, oils, detergents, etc.
- This device is recommended for use in areas where the altitude is lower than 1200m.
- This appliance is designed to be used at ambient temperatures between 5°C and 40°C.
- Water may drip after the dispensing stops. Please be careful to prevent burns.

Applicable water source

Purified water or distilled water.

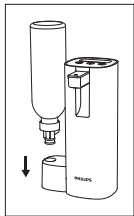
Before first use

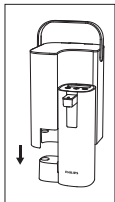
Remove all packing material. Thoroughly clean the device before first use. Take out the device from the travel pouch. Connect with a water source.

a. Connect with a bottled water.

Take out the connector from the base, and screw the connector on the bottled water.

Note: the volume of the bottle water should be less than 350ml, and the height of the bottle should be lower than 200mm.



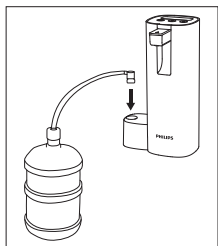


- b. Connect with the complementary water tank (for ADD4811 only).
Clean the water tank, fill it up and place it on the converter.

- c. Connect with other water container.

Connect the water container and the base with the silicone tube.

Put the plug in the wall socket. Select room temperature and 300ml to flush the device.



Using the device

Safety lock

- Press the safety lock button for 2 seconds to unlock and dispense water.
The device will enter safety lock mode in 10 seconds, or after the dispensing stops.
- Long press the safety lock button for 10 seconds to cancel or activate the safety lock function.

Dispensing water

- Press the water volume button to select the dispense volume between 150ml and 300ml.
- Press the water temperature button to select the dispense temperature between room temperature, 45°C, 55°C, 65°C, 75°C, 85°C or 95°C
- Press the dispense button after setting volume and temperature.
- When using the heating function, please pay attention to the amount of water in the water bottle or water tank to avoid steam spraying due to dry pumping, and pay attention to prevent splashes of water.

Stop dispensing

- Press any button to stop the dispensing.

Water shortage

The alarm icon will flash red and the device will beep for 3 times when there's water shortage.

Energy-saving mode

- The device will automatically enter energy-saving mode when there's no operation within 1 minute.
- When the dispenser entered energy-saving mode, the safety-lock icon will light up on the display screen.
- Press any button to exit the energy-saving mode.

Cleaning

- Wipe the outside of the appliance with a moist cloth.
- Select room temperature and 300ml to flush the device regularly.

Empty the water from the device

- Disconnect from the water source.
- Long press the dispense button for 5 seconds to extract the remaining water from the device.
- Shake the device gently until there's no water coming out from the outlet.

Problem	Solution
The display is off completely.	Put the plug in the wall socket.
The device does not heat the water.	Contact the customer care center.
The button does not work.	Contact the customer care center.
Water leakage at the connecting place	Check if the connector match with the bottled water or if it is screwed tightly on the bottled water or the dispenser. Check if the tube has plugged tightly on the connector.
The display shows EE	The device may be over-heated. Wait for the device to cool down and use again.
The display shows E2	Contact the customer care center.
The display shows E5	Put in room temperature water, or wait for the device to cool down and use again. If the device does not recover, contact the customer care center.
The display shows EU	Contact the customer care center.

Warranty and support

If you need information or if you have any problems, please visit: www.philips.com or contact the customer care center in your country. If there is no customer care center in your country, go to a local dealer. Within two years from the date of purchase, you will receive free warranty service for any damage caused by the manufacturing process, or components under normal operation confirmed by our maintenance service. The warranty service does not include frequently replaced consumable components, auxiliary devices, transportation fees, and door-to-door service. Please show the proof of purchase to the service personnel during maintenance.

Packing list

ADD4810	
Dispenser	1x
Hose	1x
Bottle adapter	1x
Travel pouch	1x
Power cord	1x
User manual	1x

ADD4811	
Dispenser	1x
Hose	1x
Bottle adapter	1x
Water tank	1x
Power cord	1x
User manual	1x

Product specifications		
Product name	Philips water dispenser	
Model	ADD4810	ADD4811
Color	White	White
Rated voltage	220-240V	220-240V
Rated frequency	50-60Hz	50-60Hz
Rated power	1500W-1785W	1500W-1785W
Product net weight	0.74 KG	1.24KG
Gross weight	1.05KG	1.57KG
Product dimension	81*81*220mm	155*148*220mm
Packaging dimension	250*103*142mm	235*205*270mm
Heating power	1600W	1600W
Water inlet requirement	Purified water or distilled water	

Please keep this user manual for future reference.

用戶必讀

使用產品之前，請仔細閱讀本重要信息，並妥善保管以供日後參考

用戶須知

切勿將機器浸入水或任何其他液體中，也不要在水龍頭下沖洗機器

- 連接機器之前，請檢查設備上指示的電壓是否與本地電源電壓相對應。
- 如果插頭、電源線或機器本身已損壞，請勿使用。
- 如果電源線損壞，則必須由製造商授權的客戶服務中心來更換電源線，以避免發生危險。
- 在有人從旁監督或適當指示如何安全使用本產品，以及了解潛在危險的狀況下，本產品可供8歲以上兒童、身體官能或心智能力退化者，或是經驗與使用知識缺乏者使用。除非兒童滿 8 歲且有人在旁監督，才能進行清潔與維護作業。產品和其電源線請放在8歲以下兒童無法取得之處。
- 僅可將產品連接到有接地的電源插座。
- 確保插頭正確插入插座。
- 將本產品放在乾燥，穩定，且水平的表面上使用。
- 使機器遠離陽光直射或任何其他熱源。
- 請和出水口保持安全距離。
- 使用過程中可觸及的表面可能會變熱。

特別注意

- 務必將機器退回製造商授權的客戶服務中心進行檢查或維修。請勿嘗試自行維修設備，否則保修將失效。
- 使用後請務必拔下機器電源。
- 請勿將本機器用於說明書以外的其他用途，及只能使用機器的原有配件。
- 該機器適用的水源是過濾水或蒸餾水。切勿使用本機器加熱其他液體，例如飲品、油、清潔劑等。
- 建議於海拔1200米以下之地區使用此機器。
- 本機器設計用於5℃至40℃的環境溫度下。
- 產品停止出水後，可能有水滴落。請小心，防止灼傷。

適用水源

過濾水或蒸餾水。

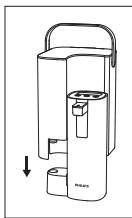
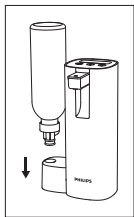
第一次使用之前

拆去所有包裝材料。首次使用前，請徹底清潔機器。從旅行袋中取出機器。取出轉換器和拔出出水口，連接水源。

a. 用樽裝水連接。

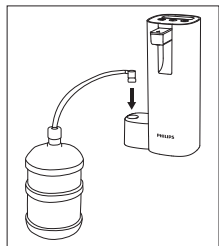
從底座上取下水樽適配器，然後將水樽適配器擰到樽裝水上。

注意：樽裝水的體積應小於350ml，瓶高應小於200mm。



b. 連接輔助水箱（僅限於ADD4811）。

清潔水箱，加滿水並將其放在轉換器上。



c. 與其他水容器連接。

用矽膠管連接水容器和底座。

將插頭插入牆壁插座。

選擇室溫和300毫升沖洗機器。

使用機器

安全鎖

- 按下安全鎖定按鍵2秒鐘以解鎖並取水。機器會在閒置10秒後或取水後進入安全鎖定模式。
- 長按安全鎖定按鍵10秒鐘以取消或啟用安全鎖定功能。

出水

- 按下水量按鍵以在150ml至300ml之間選擇分配量。
- 按下水溫按鍵以在常溫、45℃、55℃、65℃、75℃、85℃或95℃之間選擇分配出水溫度。
- 設定水量和溫度後，按取水按鍵。
- 使用加熱功能時，請留意水樽或者水桶的水量，避免因空抽而出現的乾燒(有蒸氣噴出)，並請留意出水飛濺，以防燙傷。

停止取水

- 按任意按鍵停止取水。

缺水

缺水時，警報圖標將閃爍紅色，並且機器將發出三聲鳴音。

節能模式

- 1分鐘內無任何操作，機器將自動進入節能模式。
- 當飲水機進入節能模式時，安全鎖定圖標將在顯示屏上點亮。
- 按任何按鍵可退出節能模式。

清潔用品

- 用濕布擦拭機器的外部。
- 同時按室溫和300毫升按鍵以進入機器自動沖洗程序。

清空機器中的水

- 斷開水源。
- 長按出水按鍵5秒鐘，以從機器中提取剩餘的水。
- 輕輕搖動機器，直到沒有水從出水口流出。

故障問題	處理辦法
顯示燈不亮	檢查插頭是否插好
不加熱	聯繫客戶服務中心
按鍵失效	聯繫客戶服務中心
水源連接處漏水	聯繫客戶服務中心
顯示幕顯示EE	機器過熱, 請等待機器溫度下降後再重新使用
顯示幕顯示E2	聯繫客戶服務中心
顯示幕顯示E5	放常溫水或等待機器溫度下降後即可正常使用, 若無法使用請聯繫客戶服務中心
顯示幕顯示EU	聯繫客戶服務中心

保養與支援

如果您需要信息或有任何問題, 請訪問: www.philips.com 或聯繫您所在國家/地區的客戶服務中心。如果您所在的國家/地區沒有客戶服務中心, 請聯絡當地的經銷商。在購買日期後起計兩年內, 凡經本公司特約維修站人員確認為正常使用情況下, 因製作工藝或原配件造成之損壞, 可享免費保修服務。保修服務不包括經常更換的易損件, 輔助設備, 運輸費和上門服務。維護期間, 請向服務人員出示購買證明。

包裝清單

ADD4810	
飲水機	1x
軟管	1x
水樽適配器	1x
旅行袋	1x
電源線	1x
說明書	1x

ADD4811	
飲水機	1x
軟管	1x
水樽適配器	1x
水箱	1x
電源線	1x
說明書	1x

產品規格		
產品名稱	飛利浦飲水機	
模型	ADD4810	ADD4811
顏色	白色	白色
額定電壓	220-240伏	220-240伏
額定頻率	50-60赫茲	50-60赫茲
額定功率	1500瓦-1785瓦	1500瓦-1785瓦
產品淨重	0.74千克	1.24千克
總重量	1.05千克	1.57千克
產品尺寸	81*81*220毫米	155*148*220毫米
包裝尺寸	250*103*142毫米	235*205*270毫米
加熱功率	1600瓦	1600瓦
進水要求	過濾水/蒸餾水	



Visit us:
www.philips.com/water

Specifications are subject to change without notice

© 2020 AquaShield

All rights reserved.

The Philips trademark and the Philips Shield Emblem are registered trademarks of Koninklijke Philips N.V. used under license.

This product has been manufactured by and is sold under the responsibility of Hong Kong AquaShield Health Technology Company Limited and Hong Kong AquaShield Health Technology Company Limited is the warrantor in relation to this product.

Rev A JUL 20

