

PHILIPS

Water Dispenser

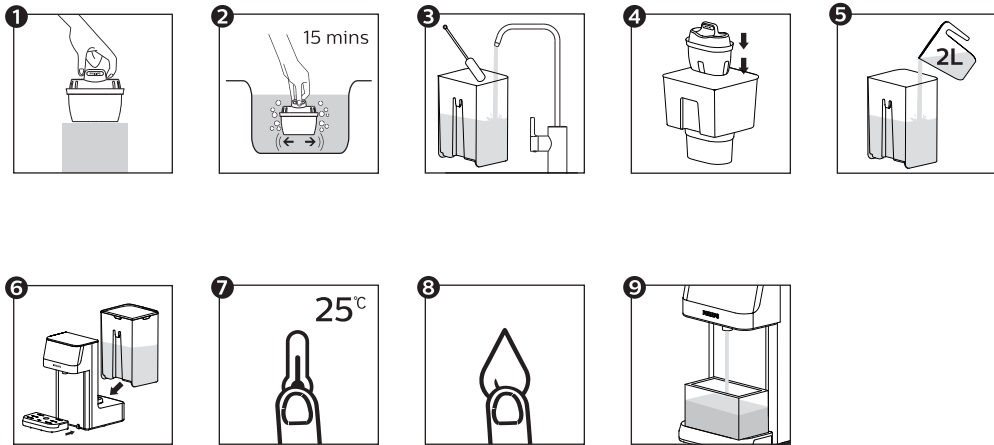
ADD5910M

Read this First!

Quick Start Guide & FAQs



First time use



9 * Dispense ambient water till the water tank is empty.

User interface



Tea program

Press to quickly set 100°C, 250ml.



Safety lock

When hot water $\geq 40^{\circ}\text{C}$ is selected, press to unlock before pressing the dispense button.

This button is also used to wake up the appliance when in sleep mode.



Water temperature selection



Water volume selection



Dispense button

Press to start or stop dispensing.



Cleaning/descale button

Long press for 3 seconds to start the cleaning/descaling process. During cleaning/descaling, press the button to pause, and press it again to restart.



Descal indicator

Lights up when it is time to descale. Lights off after the descaling process completes.



Water shortage indicator



Filter lifetime indicator

The lifetime of the filter cartridge

Model	Suggested Replacement Cycle
AWP210/AWP211/AWP212	After 100 liters or every 30 days, whichever comes first.

Filter lifetime indicator



4 grids light up: the filter has a full lifetime.

2 grids light up: the filter has half of the lifetime left.

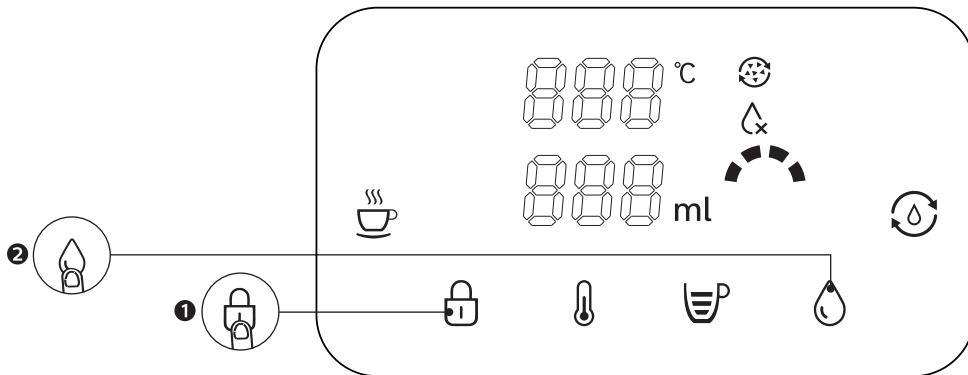
4 grids flashes: the filter reaches the end of life.



Filter lifetime reset

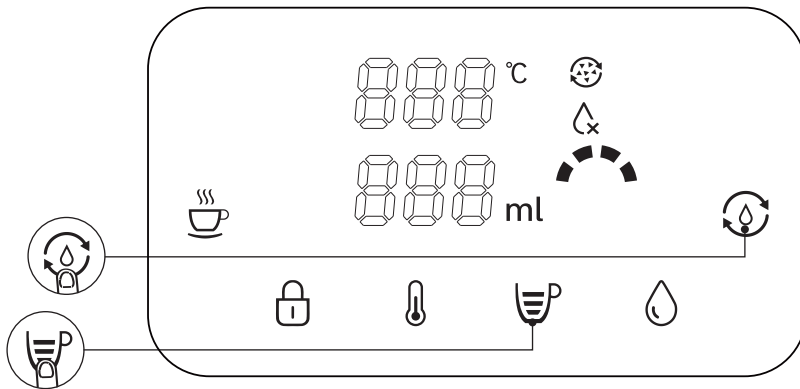
Long press both buttons for 3 seconds to reset the filter lifetime.



How to dispense water?



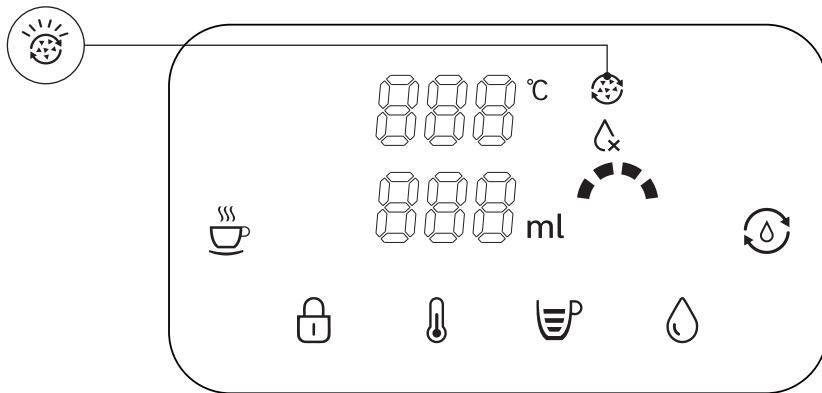
- When hot water $\geq 40^{\circ}\text{C}$ is chosen, press the safety lock button to unlock.
- Press the dispense button to start or stop dispensing.

How to reset the filter lifetime indicator?



- Long press both buttons   for 3 seconds to reset the filter lifetime.

When should I descale the appliance?



- Hard water causes limescale build up and may cause your product to fail.
- Please descale your product when the descale indicator ☀️⚙️ lights up and requires the descale process.
- For step-by-step descaling instructions, please check the user manual chapter 5.



Register your product and learn more via the website link below:

www.philips.com/water

Specifications are subject to change without notice

© 2021 AquaShield

All rights reserved.

The Philips trademark and the Philips Shield Emblem are registered trademarks of Koninklijke Philips N.V. used under license.

This product has been manufactured by and is sold under the responsibility of Hong Kong AquaShield Health Technology Company Limited and Hong Kong AquaShield Health Technology Company Limited is the warrantor in relation to this product.

Rev A JUL 21

