

PHILIPS

淨水器 Water Purifier

廚下式淨水器
Under-the-sink

WP4161



使用說明書 1-14
User Manual 15-28

貼心小提醒

使用淨水器過濾後的自來水，在煮沸過程中，因水質硬度的差異，產生些許水垢（白色沉澱物），此乃正常現象，對人體健康無害，請勿擔心！

自來水中有人體無法自行合成的礦物質與微量元素，例如鎂、鈣等等，煮沸過程中，水溫上升超過70°C時，溶解在水中的鎂、鈣離子會與碳酸離子結合，轉變成為碳酸鈣、碳酸鎂沉澱物，此即為水垢，為水的正常物理特性。

經過飛利浦淨水器過濾後的水，仍然保留對人體健康有益的礦物質，所以經煮沸后產生自然水垢。除了經RO逆滲透過濾后的淨水，因已把水中礦物質也過濾去除，此時，水煮沸后不會產生水垢！

水垢為煮沸後礦物質自然沉澱物，對人體健康並無影響，請您安心飲用！

目錄

1	產品功能	1	11	注意事項	9-10
---	------	---	----	------	------

2	適用水質範圍	1	12	維護保養	11-12
				日常維護	11
				濾芯更換	12
				電池更換	12

3	產品規格	1	13	故障診斷	13
---	------	---	----	------	----

4	淨水過濾程序	2	14	產品保修服務指南	14
---	--------	---	----	----------	----

5	結構示意圖	2	15	裝箱清單	14
---	-------	---	----	------	----

6	控制面板	3			
---	------	---	--	--	--

7	安裝示意圖	3			
---	-------	---	--	--	--

8	安裝前準備事項	4			
---	---------	---	--	--	--

9	安裝步驟	4-5			
---	------	-----	--	--	--

10	使用方法	5-9			
----	------	-----	--	--	--

1 產品功能

感謝您選擇飛利浦。飛利浦櫥下型淨水器WP4161採用獨特的Quick Twist濾芯設計，方便快捷。四層漸進式過濾層，有效去除氯氣、懸浮物雜質、揮發性有機物和膠體、細菌等，全面提升飲水口感，提供您健康優質家居飲用水。

2 適用水質範圍

5-38°C 自來水

3 產品規格

產品名稱	飛利浦櫥下型淨水器WP4161		
主要成份/部件 及濾芯使用壽命	PEGA聚乙烯顆粒活性炭復合濾芯 - 聚乙烯過濾膜 - 顆粒活性炭	1支	6-12個月*
	CB壓縮活性炭棒	1支	6-12個月*
	UF超濾膜濾芯 - ABS膜殼 - 聚乙烯膜絲中空絲膜組件	1支	12-24個月*
	聚丙烯濾殼	2個	
	鵝頸龍頭	1個	
	淨水流量	2公升/分鐘	
淨水總量	去除細菌、鉛、農藥、揮發性有機物	4000公升**	
	去除餘氯	12000公升***	
運作壓力	0.2 - 0.4MPa		
進水水質	自來水		

*濾芯實際壽命因當地自來水水質和每天使用量而異

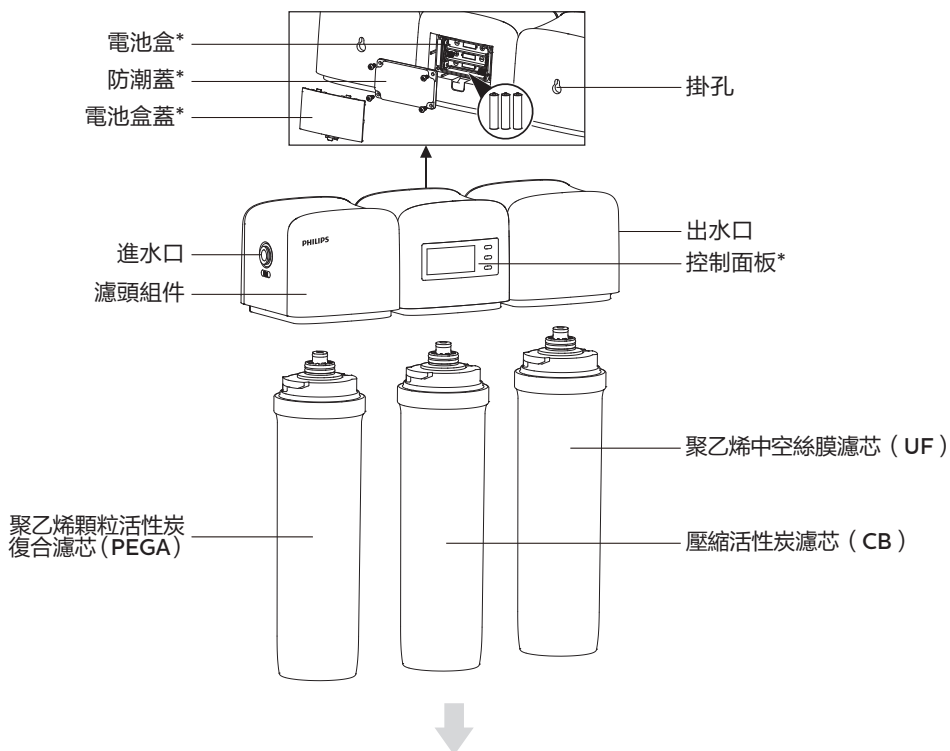
**基於國際測試認證機構BV在實驗室條件下測得

***基於國際測試認證機構SGS在實驗室條件下測得

4 淨水過濾程序

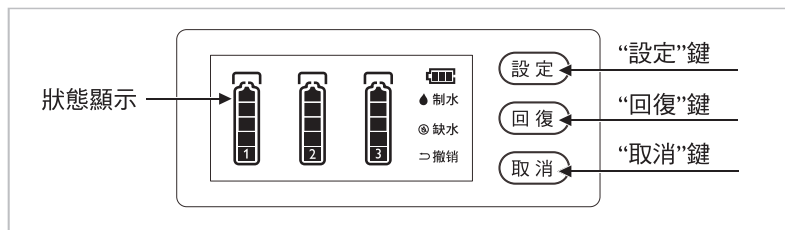
自來水 → 複合式濾芯
 ↳ 聚乙烯濾芯+顆粒活性炭 → 壓縮活性炭濾芯 → ABS膜殼、聚乙烯膜絲
 ↳ 中空絲膜組件 → 淨化水

5 結構示意圖



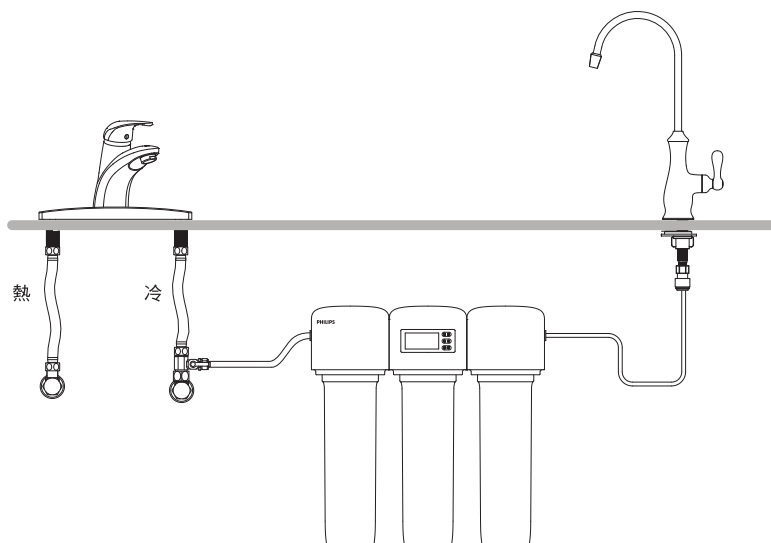
* 僅限WP4161/01以及WP4161/91，其餘WP4161型號均不含控制面板、電池盒、防潮蓋以及電池盒蓋

6 控制面板



* 僅限WP4161/01以及WP4161/91，其餘WP4161型號均不含控制面板。

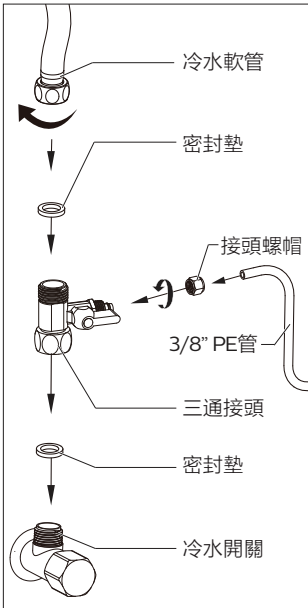
7 安裝示意圖



8 安裝前準備事項

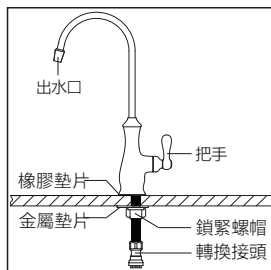
- (1) 先確認淨水器要安裝的位置：
- (2) 確認安裝所需要的工具：
 - 電鑽（衝擊式）
 - 十字型螺絲起子
 - 活動扳手
 - 管剪
- (3) 請按說明書中的裝箱清單核對安裝配件是否齊全。

9 安裝步驟



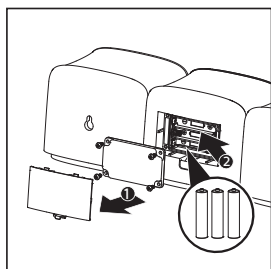
(1) 安裝三通接頭

- 關閉冷水閥，將冷水軟管從冷水閥上擰下；
- 將三通接頭安裝在冷水閥上（安裝時請勿遺漏三通接頭上的密封墊）；
- 將冷水軟管安裝在三通接頭上（安裝時請勿遺漏冷水軟管上的密封墊，如無密封墊，請在螺紋處纏繞適量的防水膠帶）。



(2) 安裝鵝頸龍頭

- 在水槽或者檯面上選擇合適的安裝位置，半徑5cm範圍內的安裝位置需平滑無凹凸，鑽一個直徑16mm的小孔；
- 再將鵝頸龍頭依圖示安裝妥當。



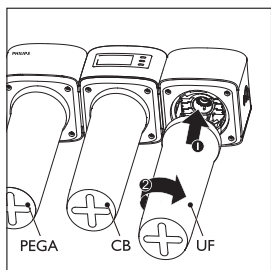
(3) 安裝電池



提示

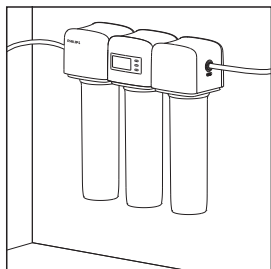
僅適用於WP4161/01以及WP4161/91

- 打開淨水器的電池盒蓋，拆下電池盒的四顆螺釘，取下防潮蓋，將3節AAA電池裝入電池盒內，再裝上防潮蓋及電池盒蓋。



(4) 安裝濾芯

- 將濾芯依照各自在淨水器中的位置，依圖示的方向旋入淨水器濾頭內。



(4) 安裝淨水器

- 請依據安裝面的實際情況，選擇螺絲的安裝是否使用塑膠壁虎；
- 兩螺絲的安裝距離為232mm，螺絲螺紋需露出12~15mm；
- 將安裝好的機器掛在螺絲上；
- 將3/8" PE管切成兩段，取其中一段，一端插入進水口處，一端安裝在三通接頭上。取另一段，一端插入淨水器的出水口，一端插入鵝頸龍頭的轉換接頭上；
- 打開冷水開關。

10 使用方法

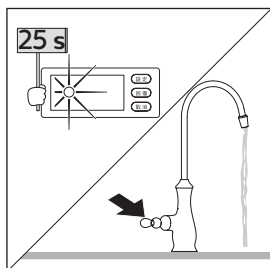
首次使用

- (1) 打開鵝頸龍頭的把手；
- (2) 打開三通接頭的開關，待水從鵝頸龍頭的出水口處出水5分鐘，此後的淨化水方可正常使用。

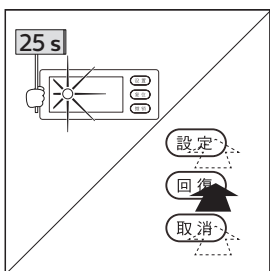
顯示螢幕功能說明

* 提示

僅適用於WP4161/O1以及WP4161/91



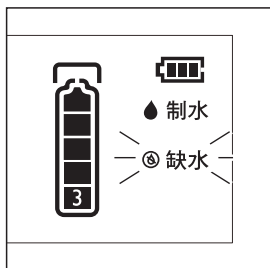
- (1) 打開鵝頸龍頭，淨化水流出，顯示幕點亮，若無按鍵操作，顯示幕點亮25秒後，進入節能模式。



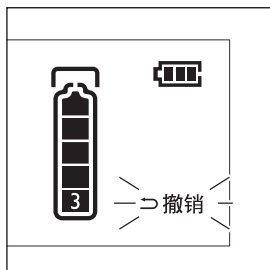
- (2) 顯示幕未顯示時，按任意鍵，顯示幕點亮25秒。



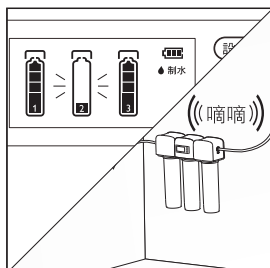
- (3) 制水圖示：淨水器工作時，“制水”圖標閃爍顯示。



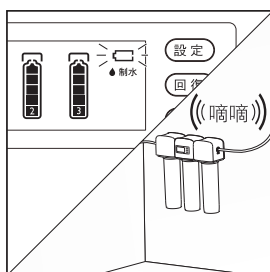
- (4) 缺水圖示：當淨化水流量過低時(表示濾芯可能要更換)，“缺水”圖示閃爍顯示。



(5) 撤銷圖示：進入設置狀態下，“撤銷”圖示閃爍顯示。



(6) 濾芯壽命圖示：對每一級濾芯壽命，進行即時顯示，當濾芯壽命過低時，淨水器間斷鳴叫，相對應的“濾芯壽命”圖示閃爍顯示。



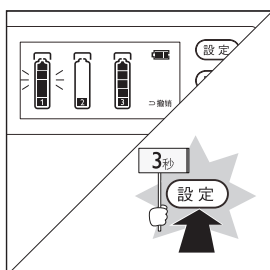
(7) 電池壽命圖示：對電池電量進行即時顯示，當電池電量過低時，淨水器間斷鳴叫，“電池壽命”圖示閃爍顯示，此情況下請在一星期內更換電池。

濾芯壽命復位

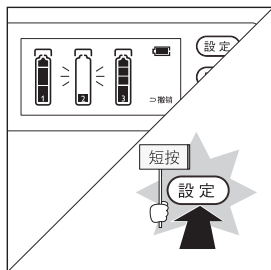
* 提示

僅適用於WP4161/01以及WP4161/91

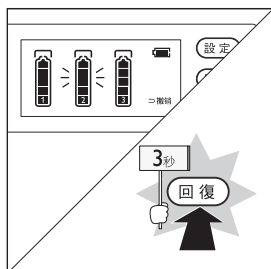
- 濾芯更換後，請對更換濾芯的壽命進行回復操作。



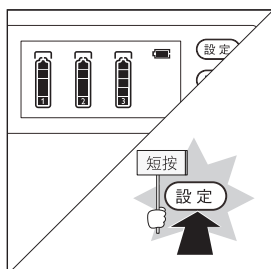
(1) 按下任意鍵，顯示幕點亮，此時長按“設置”鍵3秒，進入設置狀態。



(2) 短按“設定”鍵，對要復位的濾芯進行選擇。



(3) 選定需復位的濾芯，“濾芯”圖示閃爍顯示，此時，長按“復位”鍵3秒，選定的濾芯，壽命恢復至滿刻度顯示。



(4) 此時，短按“設定”鍵直至無“濾芯”圖示閃爍，即退出設置狀態；

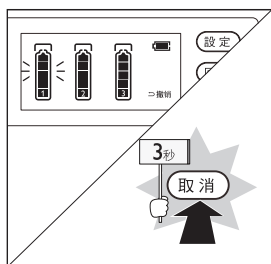
濾芯壽命重定撤銷

* 提示

僅適用於WP4161/O1以及WP4161/91

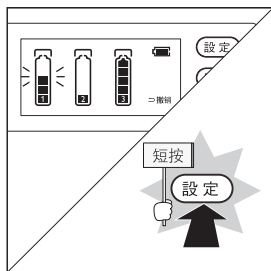
■ 當對濾芯壽命進行復位操作時，如果誤將不需復位的濾芯進行了壽命復位時，可以通過撤銷操作，將濾芯壽命進行恢復。以下情況下，此操作無效：

- (1) 濾芯壽命復位後，已過5分鐘；
- (2) 濾芯壽命復位後，有斷電的操作。



濾芯壽命重定撤銷步驟：

■ 在設置狀態下（進入方法請見“濾芯壽命復位”章節），此時，“撤銷”圖示閃爍顯示，長按“撤銷”鍵3秒，復位過的所有濾芯，壽命恢復至重定前的狀態。



- 此時，短按“設置”鍵直至無“濾芯”圖示閃爍，即退出設置狀態；

11 注意事項

- 使用本產品之前，請仔細閱讀本說明書，並妥善保管以備日後參考。

警告



提示

- 如果忽視這個標誌所述的內容，則可能造成淨水器的永久性損壞或導致嚴重財物損失。

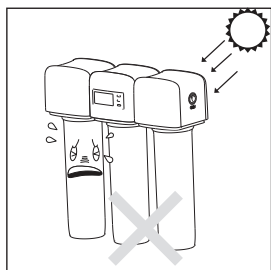
- 使用進水水質為市政自來水（不明水源地請勿使用）。
- 請注意輕拿輕放，以免產品跌落造成砸傷。
- 切勿將本淨水器安裝在水壓超過0.4MPa的供水管線上。若進水水壓超過0.4MPa，必須加裝減壓閥（需另行購買）。
- 本淨水器進水溫度要求5~38℃，進水溫度超過38℃可能損壞密封件導致漏水；進水溫度低於5℃，可能造成冰凍，引起管道破裂，導致漏水。
- 淨水器濾芯安裝順序切勿顛倒以免影響淨水器正常發揮其功能。
- 淨水器切勿反向安裝，把進水管線連接在出水口上。

注意

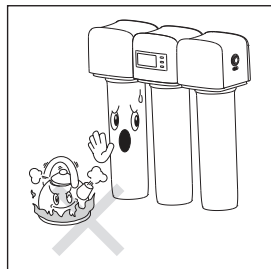


提示

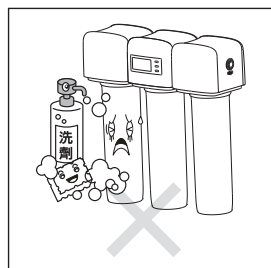
- 如果忽視這個標誌所述的內容，則可能造成淨水器的永久性損壞或導致嚴重財物損失。



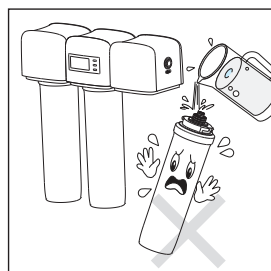
- ❗ 淨水器切勿安裝在陽光直射的地方或暴露於含有有害化學品的地方，或有掉落，被撞擊等可能受到損害的任何地方。



❗ 淨水器安裝不要靠近任何熱源。



❗ 清潔淨水器用清水即可，請勿直接灑水清潔機器，切勿使用鋼絲絨，研磨性清潔劑或腐蝕性液體（例如汽油或丙酮）來清潔淨水器。這些物質可能會導致產品破裂、變色或變形等。



❗ 清潔時，請勿將其它液體倒入濾芯，以免濾芯過濾系統損壞。

環保

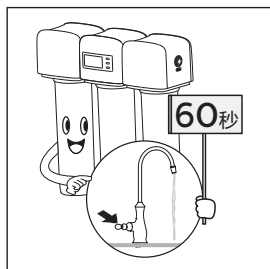


丟棄本產品時，請不要將其與一般生活垃圾堆放在一起；應以環保部門指定的回收方式回收，以行動支持地球環保。

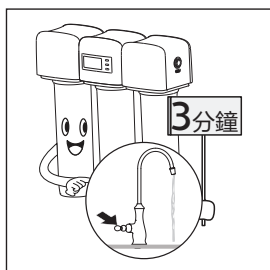
一次性電池含有可能污染環境的物質。請勿將一次性電池和一般垃圾一同丟棄，應以環保部門指定的回收方式回收。丟棄前，一定要先將顯示屏幕里的電池取出，再將本產品回收處理。

12 維護保養

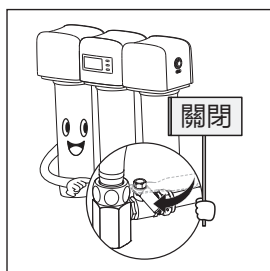
日常維護



- ❗ 如果兩天以上未使用淨水器，請打開鵝頸龍頭，過水一分鐘後，再使用淨水器。



- ❗ 如果超過一星期不使用淨水器，請將濾芯密封好，放在冰箱保鮮室保存（切勿放入冷藏室），下次使用前，先讓淨水器過水3分鐘。



- ❗ 如果長期不使用淨水器，請關閉三通接頭，與水源斷開。

濾芯更換

- 請根據顯示幕濾芯壽命提示或建議更換周期定期更換濾芯。新的濾芯可從飛利浦經銷商處或經授權的飛利浦服務中心獲得，其供應型號為WP3975、WP3977、WP3985。

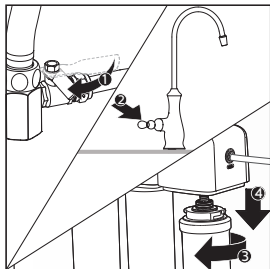
淨水器濾芯更換對照表：

位置	名稱	對應濾芯型號	建議更換週期：
第1級	PEGA	WP3975	6-12個月
第2級	CB	WP3977	6-12個月
第3級	UF	WP3985	12-24個月

- ❗ 僅可使用原裝飛利浦濾芯進行更換。

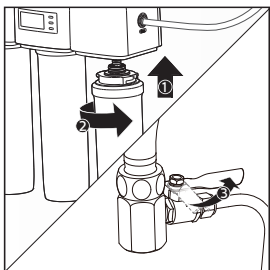
- 各濾芯的實際使用壽命取決於當地自來水水質和每天使用量（建議每日使用量10L左右）。
- 本淨水器所建議的各濾芯的更換週期，是根據各地自來水的情況，得出的平均數值。若當地的水質情況低於平均指標，濾芯的實際壽命會與建議的濾芯壽命有所差異。如果濾芯過早堵塞、失效，此時請以實際使用狀態作為濾芯更換的依據。

濾芯更換步驟：



(1) 關閉三通接頭的開關，打開鵝頸龍頭的把手

(2) 依圖示方向旋轉取需更換的濾芯；



(3) 將對應的替換濾芯依圖示方向旋入濾頭；

(4) 打開三通接頭的開關，待水從鵝頸龍頭的出水口處出水5分鐘，此後的過濾水方可正常使用。

注：WP4161/01以及WP4161/91型淨水器請對更換的濾芯進行壽命復位操作（操作方法請見“濾芯壽命復位”一章）。

電池更換

- 當聽到淨水器有間斷鳴叫，請查看顯示幕，若電池電量圖示閃爍，請對電池進行更換（更換的電池請自行購買），此淨水器需使用3節AAA號鹼性乾電池，電池的更換方法請見“安裝步驟”章節中“安裝電池”部分。

13 故障診斷

故障現象	故障可能的原因	故障解決方法
淨水器出水流量明顯變小	冷水閥、三通球閥或鵝頸龍頭未完全打開	將各閥門完全打開
	濾芯堵塞	更換濾芯
	水壓過低	採取增壓措施或待水壓恢復正常時使用
出水水質差	濾芯失效	更換濾芯
	長期停用（3天以上）	沖洗2~4分鐘
	自來水水質差	確認自來水符合市政自來水的要求
漏水	管路或濾芯安裝未到位	按正確的安裝方法重新安裝
	零部件有損壞	請與售後服務人員聯繫
顯示幕顯示的濾芯壽命未到期，而濾芯實際壽命已到期	當地水質較差	更換濾芯
	流量計或計時器故障	請與售後服務人員聯繫
	未更換濾芯卻復位了濾芯壽命	更換濾芯並及時復位對應的濾芯壽命，只在更換濾芯時才復位對應濾芯壽命

顯示螢幕（僅限於WP4161/01以及WP4161/91）

故障現象	故障可能的原因	故障解決方法
裝上電池後顯示幕不顯示	電池安裝不正確	取下，重新安裝
	電池電壓不足	更換新電池
	其它異常	請與售後服務人員聯繫
“濾芯壽命”圖示一直沒有降低	流量計線沒插好	重新插接流量計線
	流量計損壞	請與售後服務人員聯繫
	計時模組損壞	請與售後服務人員聯繫
	其它異常	請與售後服務人員聯繫

14 產品保修服務指南

從購買日期起，產品擁有兩年保固期。如果您需要更多資訊，請訪問www.philips.com。

*在購買日期後兩年內，凡經本公司特約維修站人員確認為正常使用情況下，因制作工艺或元器件造成之損壞，您都將獲得免費保修服務。

此免費服務不包括需時常更換的易耗零配件（淨水器濾芯、淨水壺濾芯、活性炭、樹脂、超濾膜片等）、輔助裝置、運輸費及維修人員上門服務費。維修時請攜同購買憑證正本方為有效。

以下情況將不能獲得免費服務

1. 使用不當引起的人為損壞，例如接入不適當配件、不適當之安裝、不依說明書使用、錯誤使用或疏忽而造成損壞等。
2. 因運輸及其他意外而造成之損壞。
3. 非經本公司認可之維修和改裝。
4. 其他因不可抗力（如自然災害、電壓異常等）造成的損壞。
5. 壹般家庭以外使用（如工業、商業用等）而造成的損壞。
6. 正常使用引起的產品老化，磨損等，但不影響產品的正常使用。

該說明作為在規定期限及條件之內進行免費維修的宣貫，並不限制消費者的法定權利。

15 裝箱清單

主機	1×
鵝頸龍頭組件	1×
轉換接頭	1×
AAA電池*	3×
螺絲	3×
膨脹管	3×
三通接頭	1×
3/8"PE管	1×
使用說明書	1×
快速入門指南	1×

* 僅限於WP4161/01以及WP4161/91

請妥善保管本使用說明書

Notes

The tap water filtered by the water filtration system will produce a little scale (white sediment) due to the difference in water hardness during the boiling process. This is a normal phenomenon and harmless to human health.

The tap water contains minerals and trace elements that the human body cannot self-synthesize, such as magnesium, calcium, etc. During the boiling process, when the water temperature rises above 70°C, the calcium and magnesium ions dissolved in the water will combine with the carbonate ions to form the calcium carbonate and magnesium carbonate deposits, i.e. scale.

This is a normal physical properties of water. The water filtered by the Philips water purifier still retains the minerals that are good for human health, which will produce natural scale after boiling. Different from the purified water after reverse osmosis filtration, since the minerals in the water have been filtered and removed, the water will not produce scale after boiling.

Scale is a natural deposit of minerals after boiling, which has no harmful effect on human health. Please drink with peace of mind!

CONTENTS

1	Product Functions	15
---	-------------------	----

2	Applicable Water	15
---	------------------	----

3	Product Specification	15
---	-----------------------	----

4	Water Treatment Process	16
---	-------------------------	----

5	Product Structure	16
---	-------------------	----

6	Control Panel	17
---	---------------	----

7	Installation Illustration	17
---	---------------------------	----

8	Preparation before Installation	18
---	---------------------------------	----

9	Installation Steps	18-19
---	--------------------	-------

10	Usage Instruction	20-23
----	-------------------	-------

11	Precautions	23-24
----	-------------	-------

12	Maintenance	25-26
	Routine maintenance	25
	Replacement of filter cartridge	25
	Battery Replacement	26

13	Trouble Shooting	27
----	------------------	----

14	Guarantee and Service	28
----	-----------------------	----

15	Packing List	28
----	--------------	----

1. Product function

Thank you for choosing Philips. Philips under-the-sink water filtration system WP4161 has a unique Quick Twist filter design, so replacing filter cartridge is convenient and quick. The 4-stage filtration effectively removes chlorine, sediments, VOCs, colloids and bacteria, so that you can enjoy high-quality drinking water easily.

2. Applicable water

Municipal tap water of 5-38°C

3. Product specification

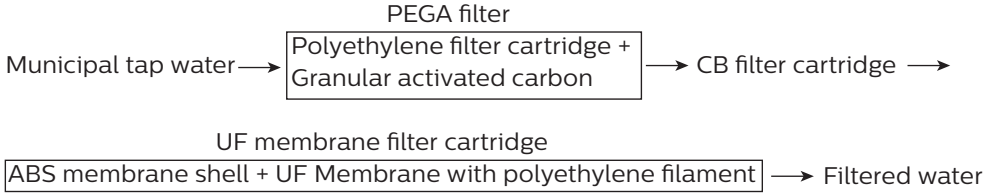
Model	Philips WP4161 water filtration system		
Main components and lifetime of filter material	PEGA filter cartridge:	1 piece	6-12 months*
	-Polyethylene filter element		
	-Granular activated carbon		
	CB filter cartridge	1 piece	6-12 months*
	UF membrane filter cartridge:	1 piece	12-24 months*
	-ABS membrane shell		
	-UF membrane with polyethylene membrane filament		
	Polypropylene filter housing	3 pieces	
	Faucet	1 piece	
Water flow rate	2 L/min		
Water filtration capacity	Bacteria, lead, pesticide and VOCs removal capacity	4000L**	
	Chlorine reduction capacity		12000L***
Working pressure	0.2 - 0.4MPa		
Inlet water quality	Municipal tap water		

*The actual lifetime of filter depends on local tap water quality and daily usage.

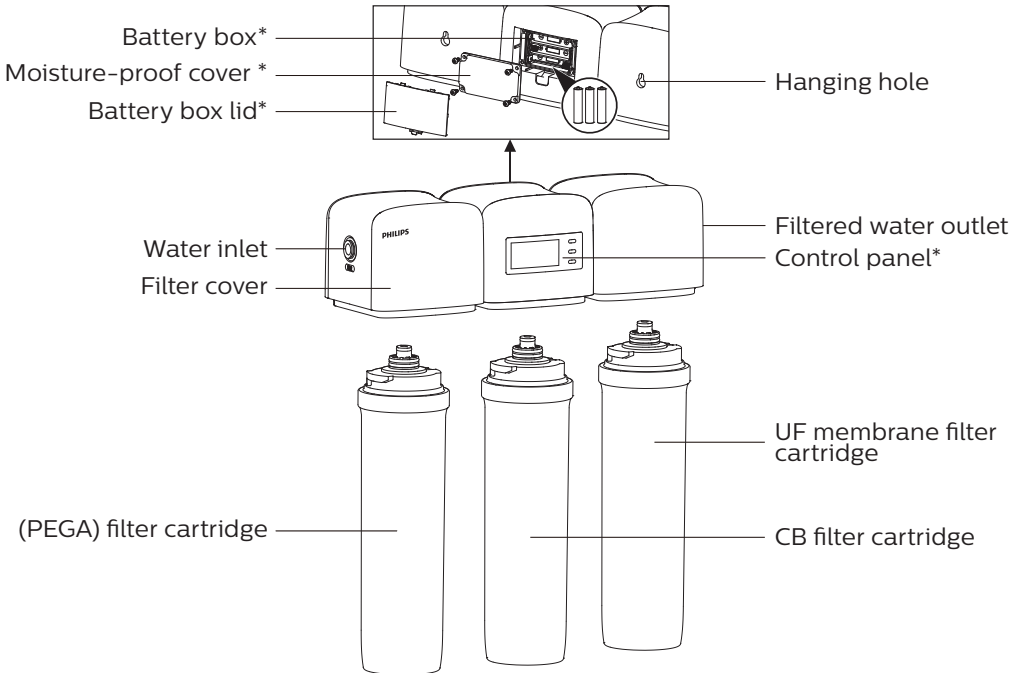
**Based on test by international testing and certification agency BV under laboratory conditions.

***Based on test by international testing and certification agency SGS under laboratory conditions.

4. Water Treatment Process

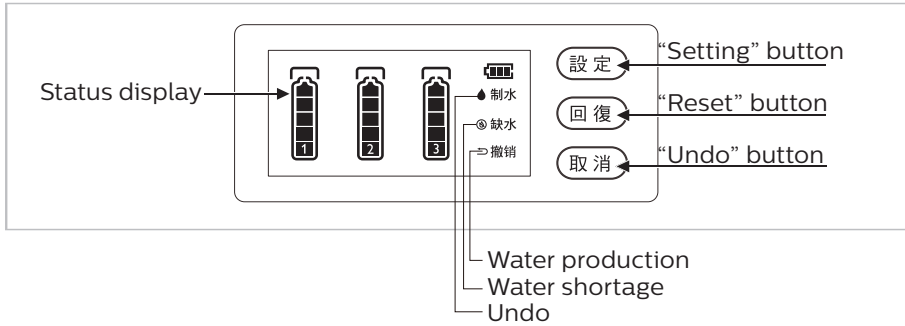


5. Product Structure



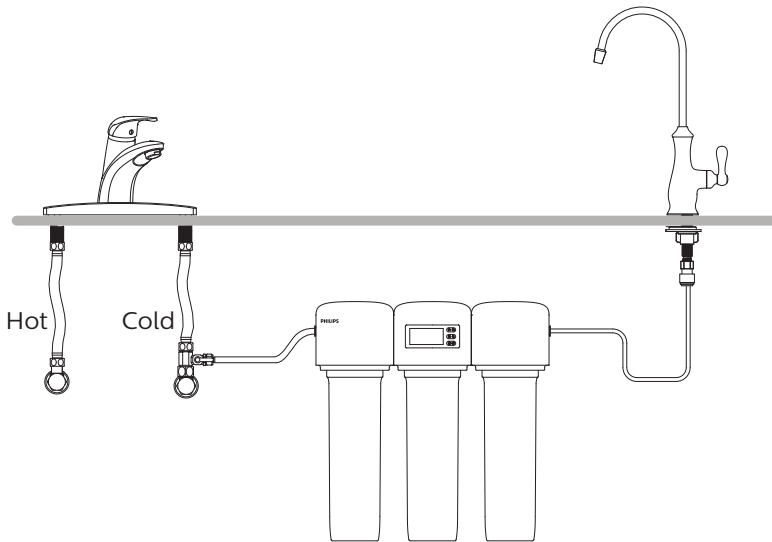
* For WP4161/01 and WP4161/91 only. All other WP4161 models are without these elements.

6. Control Panel



* For WP4161/01 and WP4161/91 only. All other WP4161 models are without display.

7. Installation illustration



8. Preparation before installation

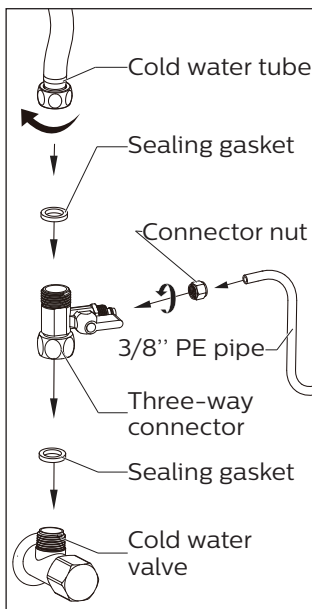
(1) Identify the system location

(2) Required tools:

- Electric drill
- Phillips screwdriver
- Monkey wrench
- Pipe scissors

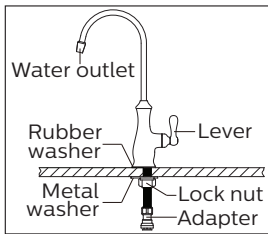
(3) Please check whether the installation accessories are complete according to the packing list in the user manual.

9. Installation steps



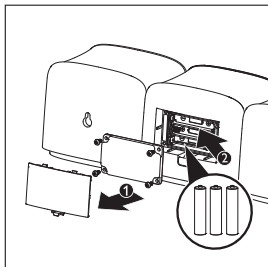
(1) Installation of three-way connector

- Close the cold water valve, and unscrew the cold water feed tube from the cold water valve;
- Install the three-way connector valve on the cold water valve (please do not miss the sealing gasket on during installation);
- Take the cold water feed tube attach to the three-way connector (please do not miss the sealing gasket on the cold water hose during installation; if there is no sealing gasket, please wrap an appropriate amount of waterproof adhesive tape around the thread).




(2) Installation of faucet

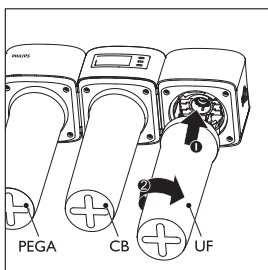
- Select an appropriate installation location on the sink or table; please make sure the surface smooth within a 5cm radius of the installation location is horizontal; drill a small hole with a diameter of 16mm;
- Install the faucet properly according to the installation drawings.



(3) Installation of batteries

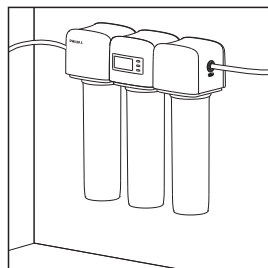
 **Notes:**
for WP4161/01 and WP4161/91 only

- Open the battery box lid of the filter head; unscrew the moisture-proof cover; put three batteries into the battery case; then properly install the moisture-proof cover and the battery box lid.



(4) Installation of the filter cartridge

- Screw the filter cartridge into the filter cover according to their respective positions and the direction as shown in the figure.



(5) Installation of water filtration system

- Please choose whether to install the screw by using the plastic anchors according to the actual conditions of the mounting surface;
- The mounting distance between two screws should be up to 232mm, and the screw thread should be exposed to 12~15mm;
- Hang the installed machine on the screw;
- Cut the 3/8" PE pipe into two sections; take one of the sections, insert one end into the water inlet, and install the other end on the three-way ball valve; take another section, insert one end into the water outlet of water purifier, and insert the other end into the adapter of faucet;
- Turn on the cold water valve.

10. Usage Instruction

First use

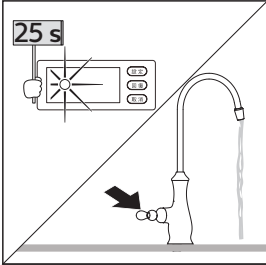
- (1) Turn on the lever of the faucet;
- (2) Turn on the three-way connector; before the first use, run the water for 5 minutes.

Display function description

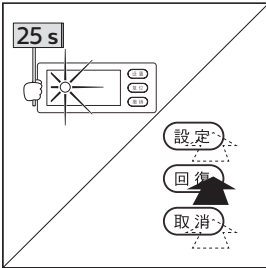


Notes:

for WP4161/01 and WP4161/91 only



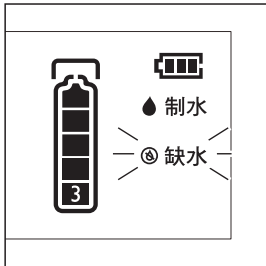
- (3) Turn on the faucet to outlet filtered water, and the display screen lights up. If no button-pushing, the screen will enter the energy-saving mode after lighting up for 25s.



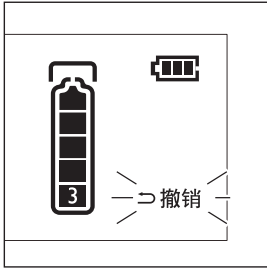
- (2) When the screen is not displayed, push any key to light up the display screen for 25 seconds.



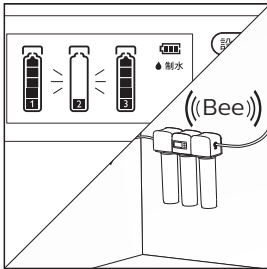
- (3) Water production icon: When the water filtration system is working, the "Water Production" icon will flash.



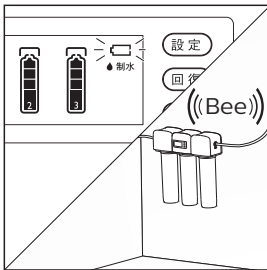
- (4) When the water flow is too low, which means probably the filter needs to be replaced, the "Water Shortage" icon will flash.



(5) Undo icon: When entering the setting state, the “Undo” icon will flash.



(6) Filter cartridge life icon: The life of each-level filter cartridge is displayed in real time. When the life of filter element is too low, the filtration system will intermittently blare, and the corresponding “Filter Cartridge Life” icon will flash.



(7) Battery life icon: The battery power is displayed in real time. When the power is too low, the water filtration system will intermittently blare, and the “Battery Life” icon will flash. In this case, please replace the battery within one week.

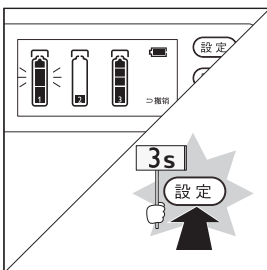
Filter cartridge life reset



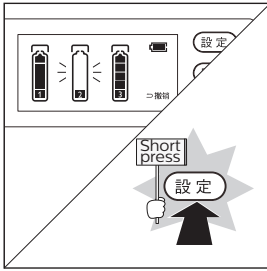
Notes:

for WP4161/01 and WP4161/91 only

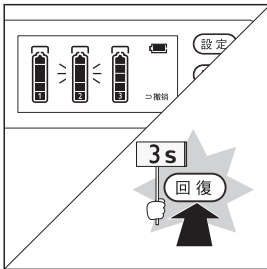
After replacing the filter cartridge, please reset its service life



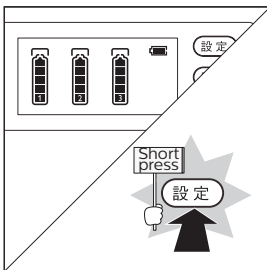
(1) Press any button to light up the display screen. Long press the “Settings” button for 3 seconds to enter the setting status.



(2) Short press the “Settings” button to select the filter cartridge which needs to be reset.



(3) After selecting the filter cartridge, the “Filter Element” icon will flash. Then long press the “Reset” button for 3 seconds to restore the selected filter cartridge to the full scale display.



(4) Short press the “Settings” button until no “Filter Element” icon is flashing to exit the setting status.

Filter cartridge life reset undo

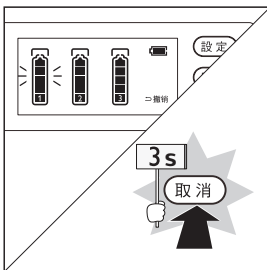


Notes:

for WP4161/01 and WP4161/91 only

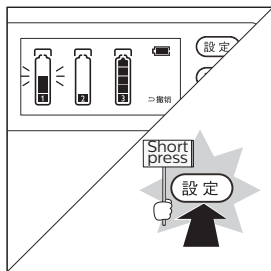
When resetting the life of the filter cartridge, if wrongly reset a cartridge, the cartridge life can be restored by undo operation. This operation is invalid under the following conditions:

- (1) Five minutes after resetting the life of the filter cartridge;
- (2) Power outage after resetting the life of the filter cartridge.



Filter cartridge life undo steps:

- In the setting status (see the chapter “Filter cartridge life reset” for the entry method), the “Undo” icon will flash at this time. Long press the “Undo” button for 3 seconds to restore the life of all the reset filter cartridges to the status before reset.



At this time, short press the “Settings” button until no “Filter Element” icon is flashing, namely, exiting the setting status.

11. Precautions

- Please read this user manual before installation and the first use. Keep this manual for future reference.

Warning:



Tips:

Ignoring the contents described here may result in permanent product damage or serious property losses.

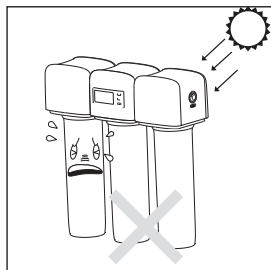
- Please use the municipal tap water as the inlet water. Do not use water of unknown source.
- Please handle the product with care to prevent anyone from being injured by falling products.
- Be sure not to install this water purifier on the water supply pipeline with a water pressure exceeding 0.4 MPa. If the inlet water pressure exceeds 0.4 MPa, the pressure reducing valve must be added (to be purchased separately).
- The inlet water temperature of the water purifier should be up to 5~38°C as required. If the inlet water temperature exceeds 38°C, the seal may be damaged, causing water leakage. If the inlet water temperature is lower than 5°C, the freezing conditions may occur, causing pipeline rupture and water leakage.
- Don't reverse the installation order of the filter element for the water purifier to avoid affecting the normal efficiency & performance of the water purifier.
- Don't install the water purifier in reverse, and connect the inlet pipeline to the water outlet.

Precautions:

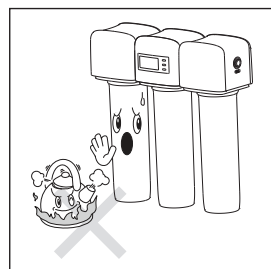


Tips:

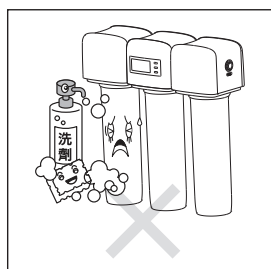
Ignoring the contents described here may result in permanent product damage or serious property losses.



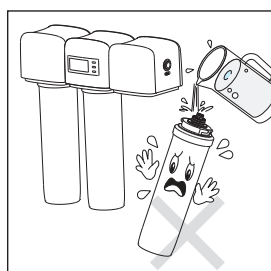
- ❗ Do not install in direct sunlight or any place where it may be exposed to hazardous chemicals, or where it may be damaged, such as falling, being hit, etc..



- ❗ Don't install the water filtration system near any high temperature sources.



- ❗ Clean the water filtration system with tap water. Please do not spray the water directly on the machine. Do not clean with steel wool, abrasive cleaner or corrosive liquid (such as gasoline or acetone). Such substances may result in cracking, discoloration or deformation of the product.



- ❗ When cleaning, please do not pour any other liquid into the filter cartridge to avoid damaging the filtration system .

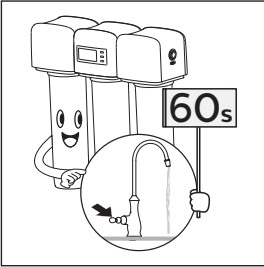
Environmental protection



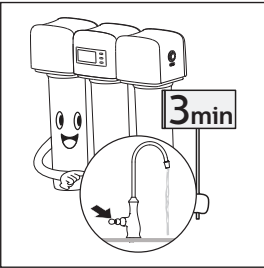
When disposing of the product, please don't stack it together with the general domestic garbage. To support the earth's environmental protection, it should be recycled by means of the recovery method as designated by the environmental protection department.

12. Maintenance

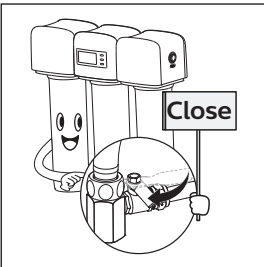
Routine maintenance



❗ If the water filtration system has not been used for more than two days, please turn on the faucet and run the water for 1 minute before use.



❗ If the water filtration system has not been used for more than one week, please properly seal the filter cartridges, store them in the refrigerator fresh-keeping room (do not store in the refrigerating chamber); run the water for 3 minutes before use.



❗ If the water filtration system has not been used for a long time, please turn off the three-way connector and disconnect it from the water supply.

Replacement of filter cartridge

- Please replace filter cartridge on a regular basis depending on the tips as displayed on the screen or the recommended replacement period. The new filter cartridge can be purchased from Philips dealers or authorized Philips service centers (model: WP3975, WP3977, WP3985) for replacement.

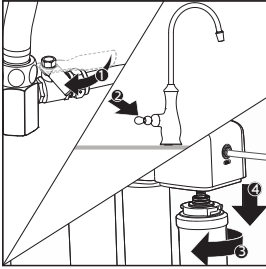
Table of model number of the replacement filter cartridge.

Position	Name	Model	Recommended replacement period
Level 1	PEGA filter cartridge	WP3975	6-12 months
Level 2	CB filter cartridge	WP3977	6-12 months
Level 3	UF membrane with polyethylene membrane filament	WP3985	6-24 months

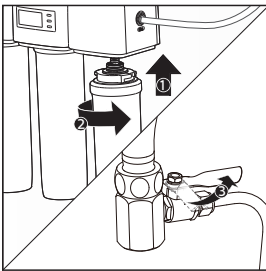
❗ It can only be replaced with the original Philips filter element.

- The actual life of filter cartridge should depend on the local tap water quality and daily usage (the recommended daily consumption is about 10L).
- The recommended replacement period is an average based on different local tap water quality. If the local water quality is below the average indicator, the actual life of the cartridge will differ from the recommended life. If the filter cartridge is blocked and fails, please consider to replace the filter cartridge.

Steps for filter cartridge replacement:



- Turn off the switch for the three-way connector and turn on the lever of the faucet;
- Unscrew the cartridge to be replaced in the direction as shown in the figure;



- Screw the replacing cartridge into the filter cover in the direction as shown in the figure;
- Turn on the switch of three-way connector; run the water for 5 minutes before use.

Note: The life of replaced filter cartridge for WP4161/01 and WP4161/91 should be reset (see the chapter "Filter Element Life Reset" for the operation).

*** Battery replacement**

When the water filtration system is intermittently blaring, please check the display screen. If the battery level icon is flashing, please replace the battery (please purchase the battery to be replaced). This water purifier needs to be equipped with three AAA alkaline dry batteries. For battery replacement method, see the Section: "Installation Steps" - Part: "Installation of Batteries".

* For WP4161/01 and WP4161/91 only

13. Trouble Shooting

Fault	Possible cause	Solution
The outlet water flow rate of the water purifier has obviously decreased.	The cold water valve, the three-way connector or the faucet is not fully opened.	Fully turn on the switches.
	The filter cartridge is plugged.	Replace the filter cartridge.
	The water pressure is too low.	Take the pressurization measures or wait for the water pressure to return to normal before use.
Poor quality of outlet water	The filter cartridge fails.	Replace the filter cartridge.
	Stop using for a long time (more than 3 days).	Rinse it for 2~4 minutes.
	The quality of tap water is poor.	Check the water quality of tap water.
Water leakage	The pipeline or filter cartridge is not installed properly.	Re-install the pipeline or filter cartridge according to the installation instruction.
	The parts and components are damaged.	Please contact consumer care services.
The life of the filter element as displayed on the screen has not expired, while the actual life of the filter element has expired.	The quality of tap water is poor.	Replace the filter element.
	There is any failure of flowmeter or timer.	Please contact the after-sales service personnel.
	Did not replaced cartridge, but reset cartridge's life.	Replace the filter cartridge and reset the corresponding life in time. Reset the corresponding life of filter cartridge only after replacing the filter element.

* Display screen

Fault phenomenon	Possible cause of fault	Troubleshooting
The screen does not light up after installing the battery.	The battery is not installed correctly.	Remove and re-install the battery.
	There is no sufficient battery voltage.	Replace the battery.
	Other abnormalities	Please contact the after-sales service personnel.
The "Filter Element Life" icon has not been lowered.	The flowmeter line is not correctly plugged.	Re-plug the flowmeter line.
	The flowmeter is damaged.	Please contact the after-sales service personnel.
	The timing module is damaged.	Please contact the after-sales service personnel.
	Other abnormalities	Please contact the after-sales service personnel.

* For WP4161/01 and WP4161/91 only

14. Guarantee & Service

This product includes a two-year warranty from the date of purchase. If you need more information, please visit: www.Philips.com.

Within two years from the date of purchase, you will receive free warranty service for any damage caused by the manufacturing process or components under normal operation confirmed by our maintenance service.

The warranty service does not include frequent replaced consumable components (water purifier filter, pitcher filter, granular activated carbon, ion exchange resin, hollow fiber membrane, etc.), auxiliary devices, transportation fee and door-to-door service.

Please show the proof of purchase to the service personnel during maintenance.

You cannot receive free warranty service under the following conditions:

1. Damage by improper operation, such as improper components connection, improper installation, deprived of manual use, misoperation.
2. Negligence and damage because of transportation or other accident.
3. Maintenance and modification without approval.
4. Other damage caused by force majeure (such as natural disaster, abnormal voltage, etc).
5. Damage caused by general use outside home (e.g. industrial and commercial use).
6. Aging, wear and tear caused by normal operation of the product without affecting normal operation of the product.

This statement serves as a publicity for free maintenance within the specified time limit and conditions, and does not limit the legal rights of consumers.

15. Packing list

Main machine	1X
Faucet	1X
Adapter	1X
AAA battery *	3X
Screw	3X
Expansion pipe	1X
Three-way connector	1X
3/8" PE pipe	1X
User manual	1X
Quick Start Guide	1X

*For WP4161/01 and WP4161/91 only.

Please keep this user manual for future reference.



Visit us: www.philips.com/welcome

Specifications are subject to change without notice

© 2019 AquaShield

All rights reserved.

The Philips trademark and the Philips Shield Emblem are registered trademarks of Koninklijke Philips N.V. used under license.

This product has been manufactured by and is sold under the responsibility of Hong Kong AquaShield Health Technology Company Limited and Hong Kong AquaShield Health Technology Company Limited is the warrantor in relation to this product.

Rev A Mar 19

