

**PHILIPS**

HU2510



# User manual

# Contents

- 1 Important ..... 1**
  - Safety ..... 1
  - Electromagnetic fields (EMF) ..... 3
  - Recycling ..... 3
- 2 Your humidifier ..... 4**
  - Product overview ..... 5
- 3 Getting started ..... 6**
  - Prepare for humidification ..... 6
- 4 Using the humidifier ..... 6**
  - Switching the humidifier on and off ..... 6
  - Water level ..... 7
  - Refilling water ..... 7
- 5 Cleaning and maintenance ..... 8**
  - Cleaning the body of the humidifier ..... 8
  - Cleaning the water tank ..... 8
  - Cleaning the humidification filter ..... 8
- 6 Replacing the humidification filter ..... 9**
- 7 Troubleshooting ..... 10**
- 8 Warranty and support ..... 12**
  - Order parts or accessories ..... 12

# 1 Important

---

## Safety

Read this user manual carefully before you use the appliance, and save it for future reference.

### Danger

- Do not spray any flammable materials such as insecticides or fragrance around the appliance.
- Do not clean the appliance with water, any other liquid, or a (flammable) detergent to avoid electric shock and/or a fire hazard.
- The water in the water tank is not suitable for drinking. Do not drink this water and do not use it to feed animals or to water plants. When you empty the water tank, pour the water down the drain.

### Warning

- Be aware that high humidity levels may encourage the growth of biological organisms in the environment.
- Do not permit the area around the humidifier to become damp or wet. If dampness occurs, turn the output of the humidifier down. If the humidifier output volume cannot be turned down, use the humidifier intermittently. Do not allow absorbent materials, such as carpeting, curtains, drapes, or tablecloths, to become damp.
- Never leave water in the reservoir when the appliance is not in use.
- Empty and clean the humidifier before storage. Clean the humidifier before next use.
- Check if the voltage indicated on the appliance corresponds to the local mains voltage before you connect the appliance.
- If the supply cord is damaged, you must have it replaced by Philips, a service center authorized by Philips, or similarly qualified persons in order to avoid a hazard.
- Do not use the appliance if the plug, the power cord, or the appliance itself is damaged.

- This appliance can be used by children aged from 8 years and above and persons with reduced physical, sensory or mental capabilities or lack of experience and knowledge if they have been given supervision or instruction concerning use of the appliance in a safe way and understand the hazards involved. Children shall not play with the appliance. Cleaning and user maintenance shall not be made by children without supervision.
- Do not insert your fingers or objects into the air outlet or the air inlet to prevent physical injury or malfunctioning of the appliance.
- Make sure that foreign objects do not fall into the appliance through the air outlet.

### **Caution**

- The appliance is only intended for household use under normal operating conditions.
- Always place and use the appliance on a dry, stable, flat and horizontal surface.
- Do not block the air inlet and outlet.
- Do not place anything on top of the appliance and do not sit or stand on the appliance.
- Only use the original Philips filter specially intended for this appliance. Do not use any other filter.
- Do not fill water from the air outlets on top of the appliance.
- Only fill the water tank with cold tap water. Do not use ground water or hot water.
- Do not put any substance other than water in the water tank. Do not add fragrance or chemical substance into the water. Use only water (tap, purified, mineral, any sort of potable water).
- Avoid knocking against the appliance (the air inlet and outlet in particular) with hard objects.
- Do not use the appliance near gas appliances, heating devices or fireplaces.
- Do not place the appliance directly below an air conditioner to prevent condensation from dripping onto the appliance.

- Do not use this appliance when you have used indoor smoke-type insect repellents or in places with oily residues, burning incense, or chemical fumes.
- Do not use the appliance in wet surroundings or in surroundings with high ambient temperatures, such as the bathroom, toilet, or kitchen, or in a room with major temperature changes.
- Always unplug the appliance when you want to move, clean appliance, fill the water, replace the filter or carry out maintenance.
- Do not wash the filter in a washing machine or dish washer, otherwise the filter will be deformed.
- When the appliance is not used for a long time, bacteria and mold may grow on the filter. Clean the water tank and dry the humidification filter. Check the filter before you start using the appliance again. If the filter is very dirty with dark spots, replace it.

---

## Electromagnetic fields (EMF)

This appliance complies with the applicable standards and regulations regarding exposure to electromagnetic fields.

---

## Recycling

This symbol means that this product shall not be disposed of with normal household waste (2012/19/EU).



Follow your country's rules for the separate collection of electrical and electronic products. Correct disposal helps prevent negative consequences for the environment and human health.

## 2 Your humidifier

Congratulations on your purchase, and welcome to Philips!

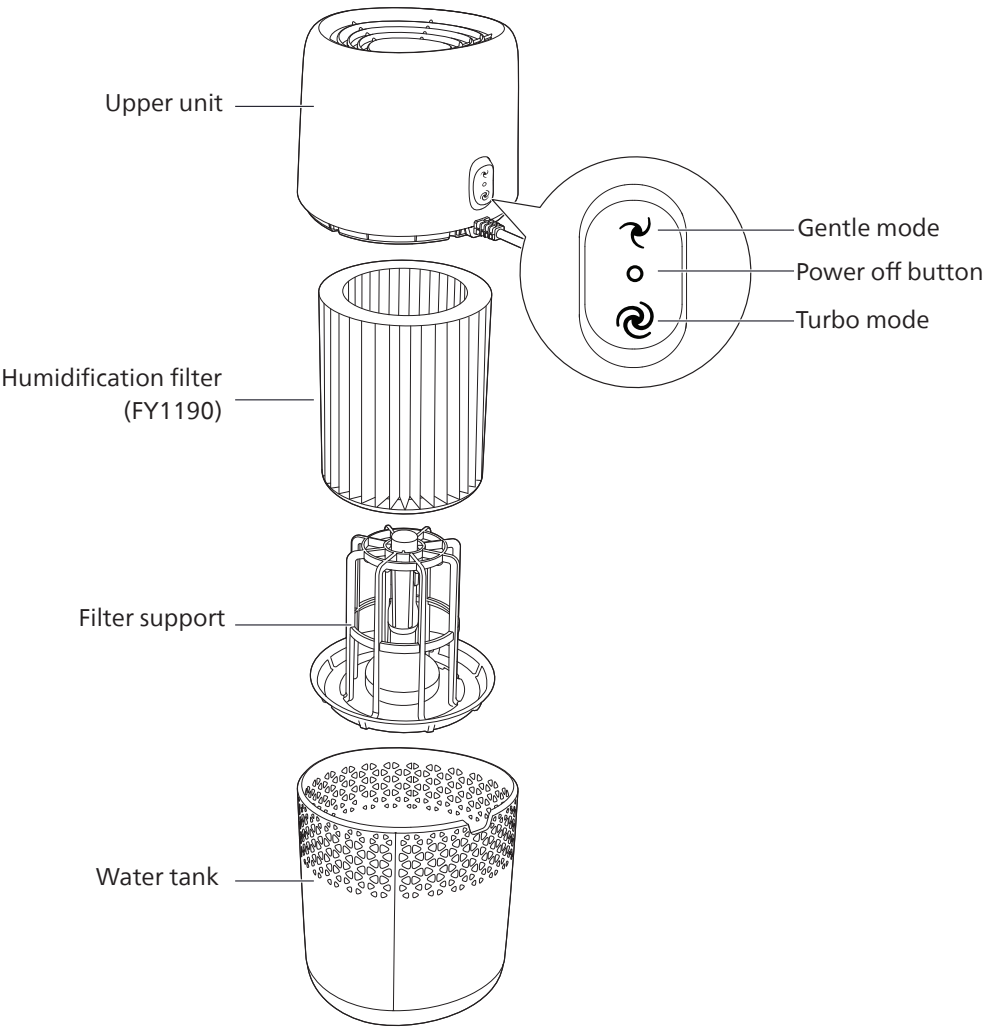
To fully benefit from the support that Philips offers, register your product at [www.philips.com/welcome](http://www.philips.com/welcome).

The Philips humidifier brings fresh, humidified air to your house for the health of your family.

It offers you advanced evaporation system with NanoCloud technology, using a special humidification filter which adds H<sub>2</sub>O molecules to the dry air, and produces healthy humid air without formation of water mist. Its humidification filter retains bacteria, calcium and other particles from the water. It delivers only pure humidified air in your home. No more dry air in the winter season or from the air conditioning.

Read this user manual carefully before you install and use the humidifier. Save it for future reference.

# Product overview

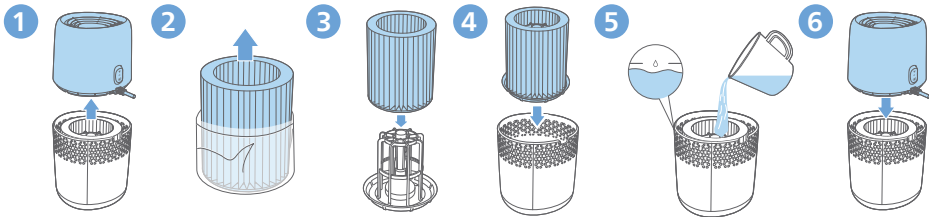


## 3 Getting started

### Prepare for humidification

**Note:**

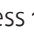




- In order to get the optimal humidification result, soak the filter in water for 30 minutes before use.




- 1 Hold by both sides of the upper unit and lift it up.
- 2 Remove the packaging material of the new humidification filter.
- 3 Assemble the new humidification filter around the filter support.
- 4 Put the humidification filter and the filter support back into the water tank.
- 5 Fill the water tank with cold tap water until water reaches the maximum water level indication.
- 6 Place the upper unit back onto the water tank.

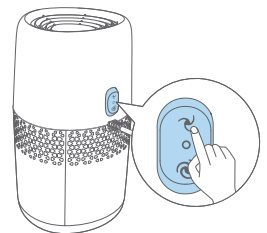
## 4 Using the humidifier

### Switching the humidifier on and off

- 1 Put the plug of the humidifier into the power socket.
- 2 Press  or  switch on the humidifier.
  -  : Gentle mode
  -  : Turbo mode
- 3 Press the power button  to switch off the humidifier.

**Note:**


- If the water level in the tank is getting very low, the humidifier stops humidifying. The indicator light  is on.
- The humidifier releases very fine invisible mist, so it is normal that you cannot see the mist.





---

## Water level

When there is not enough water in the water tank, the  indicator is on, the humidifier stops working. The humidifier will resume work when you refill water into the water tank.

### Note:

- It is normal to find some water left in the tank.

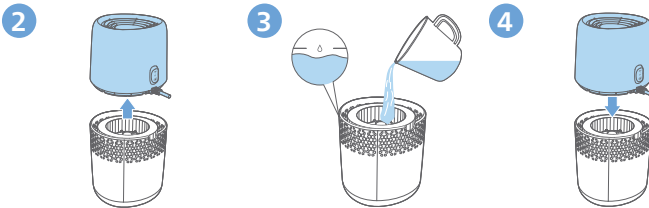
---

## Refilling water

### Note:

- When filling water, do not exceed the maximum water level, or water might leak from the air inlets.
- Do not shake the water tank when moving it, or water might leak from the air inlets.
- Do not fill water through the air outlets on top of the humidifier.

1 Switch off the humidifier and unplug it.



- 2 Remove the upper unit by holding it at both sides.
- 3 Fill the water tank with cold tap water until water reaches the maximum water indication level.
- 4 Place the upper unit back onto the water tank.

## 5 Cleaning and maintenance

### Note:

- Always unplug the humidifier before you clean it.
- Avoid pouring water through the air inlets and outlets.
- Never use abrasive, aggressive, or flammable cleaning agents such as bleach or alcohol to clean any part of the humidifier.

---

### Cleaning the body of the humidifier

Regularly clean the inside and outside of the humidifier to prevent dust from collecting.

- 1 Wipe away dust with a soft dry cloth from the body of the humidifier.
- 2 Clean the air inlet and the air outlet with a soft dry cloth.

---

### Cleaning the water tank

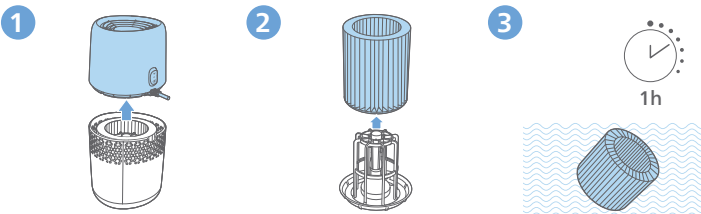
Clean the water tank every weeks to keep it hygienic.

- 1 Take out the humidification filter and the filter support.
- 2 Add some mild washing-up liquid mixed with water in the water tank.
- 3 Clean the inside of the water tank with a soft clean cloth.
- 4 Empty the water tank into a sink.
- 5 Put the humidification filter and the filter support back into the water tank.

---

### Cleaning the humidification filter

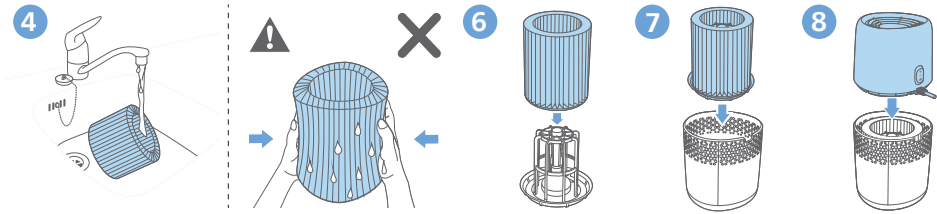
Clean the humidification filter every week to keep it hygienic.



- 1 Take out the humidification filter and the filter support from the water tank.
- 2 Remove the humidification filter from the filter support.
- 3 Soak the humidification filter in cleansing agent (e.g diluted citric acid solution) for one hour.

**Note:**

- Please use mid or acid cleanser (24g citric acid with 4L water).



- 4 Rinse the humidification filter under a slowly running tap. Do not squeeze or wring the filter when cleaning.
- 5 Let excess water drip off the humidification filter.
- 6 Assemble the humidification filter round the filter support.
- 7 Put the humidification filter and the filter support back into the water tank.
- 8 Put the upper unit back onto the water tank.

**Note:**

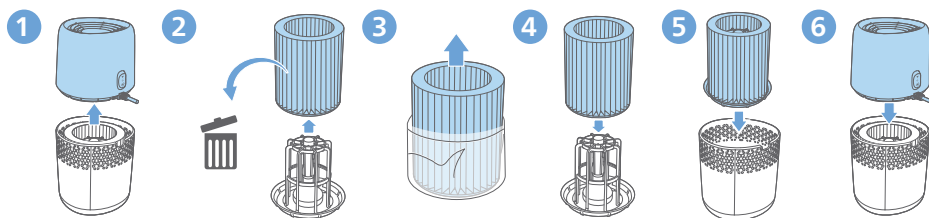
- Do not squeeze or wring the filter. This might damage the filter and impact humidification performance.
- Do not dry the filter under direct sunlight, unless it is assembled back onto the filter support.

## 6 Replacing the humidification filter

**Note:**

- Use only Philips original humidification filter FY1190.
- Always unplug the humidifier before you replace the humidification filter.
- Register your product at **[www.philips.com](http://www.philips.com)** for further information on how to replace your filter.
- Do not dry the filter under direct sunlight, unless it is assembled back onto the filter support.

Replace the humidification filter every 6 months for optimal performance. If the filter is in good condition, you could use it for a longer period of time. Make sure to replace the humidification filter at least once a year.



- 1 Take out the humidification filter and the filter support from the water tank.
- 2 Remove the humidification filter from the filter support. Discard the used filter.
- 3 Remove the packaging material from the new humidification filter.
- 4 Assemble the new humidification filter around the filter support.
- 5 Put the filter and the filter support back into the water tank.
- 6 Put the upper unit back onto the water tank.

## 7 Troubleshooting

This chapter summarizes the most common problems you could encounter with the appliance. If you are unable to solve the problem with the information below, contact the Consumer Care Center in your country.

Problem	Possible solution
The humidifier does not work.	<ul style="list-style-type: none"> <li>• Make sure that there is power supply to the humidifier.</li> <li>• Make sure that the water tank is filled with water and the upper unit is placed properly onto the water tank.</li> </ul>
There is no air humidification.	<ul style="list-style-type: none"> <li>• Make sure that the water tank is filled with water and the upper unit is placed properly onto the water tank.</li> </ul>
The water tank leaks.	<ul style="list-style-type: none"> <li>• Make sure that the humidifier is not overfilled with water.</li> <li>• Make sure that the humidifier is well assembled/ connected every time after you clean it or after you remove the upper unit and/or water tank for refilling.</li> <li>• Make sure that the water tank is properly placed. If the problem persists, contact the Consumer Care Center in your country.</li> </ul>

Problem	Possible solution
I do not see the humidity level change through hygrometer.	<ul style="list-style-type: none"> <li>• Make sure that you have assembled the humidification filter round the filter support.</li> <li>• The humidification filter is dirty. Rinse and/or descale the humidification filter (see the chapter 'Clean the humidification filter').</li> <li>• Your room might have too much ventilation. Please close doors and windows.</li> <li>• Your room size is too big.</li> </ul>
There are some white deposits on the humidification filter.	<ul style="list-style-type: none"> <li>• The white deposits are called scale and they consist of minerals from the water. Scale on the humidification filter affects the humidifying performance, however it does not harm your health. Please follow the cleaning instructions in the user manual.</li> </ul>
The filter discolors after some time.	<ul style="list-style-type: none"> <li>• The deposit is a natural effect of the filter material, and it has no impact on humidification performance. Clean the humidification filter frequently to remove the scale, and replace the humidification filter every 6 months.</li> </ul>
There is unpleasant smell coming out from the humidifier.	<ul style="list-style-type: none"> <li>• Make sure that the water tank is filled with water.</li> <li>• Clean the humidification filter (see the chapter 'Clean the humidification filter').</li> </ul>
No air comes out of the air outlet.	<ul style="list-style-type: none"> <li>• Put the plug of the humidifier into the power socket and switch on the humidifier.</li> </ul>
I do not see visible mist coming out of the humidifier. Is it working?	<ul style="list-style-type: none"> <li>• When mist is very fine, it is invisible. This humidifier has a NanoCloud humidification technology, which produces healthy humid air from the outlet area without formation of water mist. Therefore, you cannot see the mist.</li> </ul>
If the humidifier is not used for a long time, How to store and reuse it?	<ul style="list-style-type: none"> <li>• When the humidifier is not used for a long time, bacteria and mold may grow on the filters. please follow below steps for storage and reuse.</li> <li>• Clean the water tank thoroughly and dry the humidification filter before storage.</li> <li>• Check the filters before you start using the humidifier again. If the filter is very dirty with dark spots, replace it (Please refer to the chapter "Replacing the humidification filter" in User manual )</li> </ul>

## 8 Warranty and support

Versuni offers a two-year warranty after purchase on this product. This warranty is not valid if a defect is due to incorrect use or poor maintenance. Our warranty does not affect your rights under law as a consumer. For more information or for invoking the warranty, please visit our website **[www.philips.com/support](http://www.philips.com/support)**.

---

### Order parts or accessories

If you have to replace a part or want to purchase an additional part, go to your Philips dealer or visit **[www.philips.com/support](http://www.philips.com/support)**.

If you have problems obtaining the parts, please contact the Philips Consumer Care Center in your country.



PHILIPS and the Philips Shield Emblem are registered trademarks of Koninklijke Philips N.V. and are used under license.

This product has been manufactured by and is sold under the responsibility of Versuni Holding B.V., and Versuni Holding B.V. is the warrantor in relation to this product.  
2023 © Versuni Holding B.V.

HU2510\_user manual\_v1.0 (08/10/2023)

