

# PHILIPS

Heated  
straightening brush

5000

Extra large brush area

ThermoProtect technology

Keratin Ceramic coating



BHH730



## Naturally straight hair in 5 minutes\*

Smooth, shiny, frizz-free hair

Reveal naturally straight, beautifully shiny hair in just 5 minutes. Our ThermoProtect technology and bristle design work together for healthy looking, frizz-free hair.

### Ease of use

- Large paddle-shaped brush
- Swivel cord

### Care and protect

- Triple bristle design
- ThermoProtect minimizes heat damage on hair
- 200°C temperature for effective styling
- Keratin infused ceramic coating

# Highlights

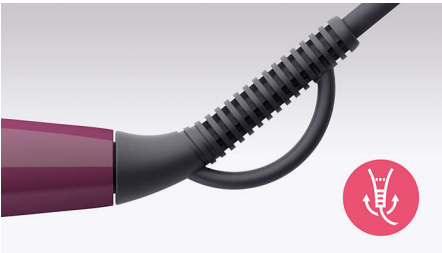
# Specifications

## Paddle-shaped brush



The paddle-shaped design to straighten more hair in one go.

## Swivel cord



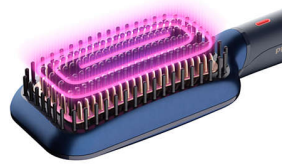
Swivel cord for comfortable use.

## Triple bristle design



Triple bristle design gently detangles and straightens while protecting your scalp from heat.

## ThermoProtect technology



Temperature of the bristles stays at an optimized level to minimize the heat damage, while reducing friction. Leaving hair naturally straight with a silky smooth look.

## 200°C styling temperature



Convenient one push for styling temperature

## Keratin ceramic coating

The bristles with keratin infused ceramic coating glide smoothly through your hair for naturally straight and shiny look.

## Technical specifications

Voltage: Universal V  
Cord length: 1.8 m  
Heater type: PTC  
Product size (mm): 350 L x 75 W x 48 D  
Total number of bristles: 247  
LED light indicator: White color

## Features

Temperature Settings: 200°C  
Brush shape: Paddle  
Brushing area (mm): 116 L x 60 W  
Number of heated bristles: 111

## Ease of use

Storage hook  
Swivel cord

## Service

2-year warranty

## Caring technologies

ThermoProtect  
Keratin infused coating

