

# PHILIPS

## Multi-Styler

### StyleCare

15+ styles in a box

15 attachments & accessories

Style Guide

OneClick Technology



BHH822/03



## More styles on demand

15 attachments and style guide for various looks

Every day a different look! From perfectly polished, straight, volumized, curly hair to updos and more, create more than 15 styles with the new Philips Multi-Styler with style guide.

#### Ease of use

- Fast heat up time, ready to use in 45 sec
- Auto shut-off for safe usage
- 1.8 m power cord
- Swivel cord to prevent tangled wires
- OneClick Technology for quick and easy attachment changing
- 160°C to 210°C styling temperature settings
- LED indicator for styling with optimal temperature

#### Beautifully styled hair

- 25mm curling barrel for tight to loose curls
- 80mm straightener for sleek results
- Style guide and 11 useful hair accessories for 15+ styles
- 32mm hot brush for luxurious volume

#### Care for your hair

- Protective ceramic coating

# Highlights

## Gentle on your hair



Protective ceramic coating ensures even heat distribution and less hair damage for shiny and soft hair.

## Swivel cord



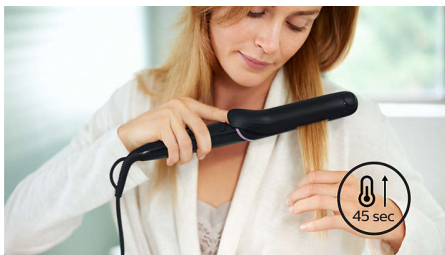
Useful swivel cord technology rotates the cord to prevent tangled wires.

## Ready to style indicator



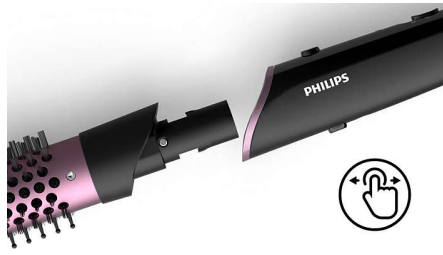
The ready to use indicator shows when the styler has reached the right temperature. The soft, white LED light changes from a soft pulse to constant to easily show when it's ready for use.

## Fast heat up time



This styler has a fast heat up time, being ready to use in 45 seconds.

## OneClick release technology



Changing attachments has never been quicker or easier with the multi-styler's OneClick design. Simply click on and push the button, holding the cool tip, to release.

## Curler for fabulous curls



25mm curling barrel for perfect tight to loose curls.

## Auto shut-off



This styler has been equipped with an automatic shut-off feature. This feature has been designed to provide peace of mind. If left on, the appliance will automatically switch off after 60 min.

## 2 temperature settings



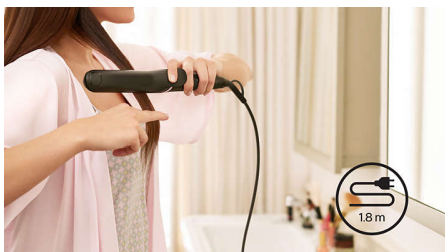
2 temperature settings for perfect results. Choose from a professional high temperatures for straightening to achieve long lasting results while caring for your hair.

## Straightener for sleek results



80mm straightening plates for perfect sleek results.

## 1.8 m cord



Convenient to use thanks to the 1.8m power cord length.

# Specifications

## Technical specifications

Voltage: 110-240V

Heat-up time: 45 sec

Plate size: Curler 90 mm, Heated brush 90 mm

Heater type: PTC

Heat settings: 2

Cable length: 1.8 m

Styling temperature: 180°C - 210°C

## Features

Cool tip

Swivel cord

Barrel diameter: Curler 25 mm

Coating of heated parts: Ceramic

Storage hook

OneClick release technology

Barrel diameter: Heated brush 32mm

Straightener size: 30x80 mm

## Accessories

Comb

Hair clips

Elastic band: 2

Hair loop

Style guide: with 15 easy to create styles

Banana clip

Elastic mini scrunchy: 4

Hair grip

Hair pins: 4

Pull hair pin

Side comb

Spiral grip: 2

## Attachments

Curler

Straightener

Hot brush

## Service

2-year worldwide guarantee

