

PHILIPS

Multi-Styler

SalonMultistylist

8 attachments

Ceramic

HP4696/00



Create the latest styles for every occasion

SalonMultistylist 8 in 1

Want to count the ways to get great styles? The SalonMultistylist 8 in 1 has eight versatile ceramic styling attachments. Perfect for creating all the styles you can think of...and more.

Ease of use

- Cool tip for easier and safer use
- Automatic shut-off after 60 min
- Safety stand for easy use
- Ready to use indicator
- Heat resistant pouch
- Included: hairclips for easy styling
- Included: Brush for smooth hair

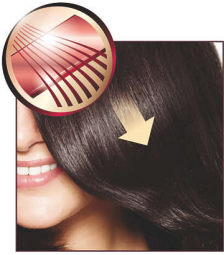
Beautifully styled hair

- Ceramic plates for smooth gliding and shiny hair
- Slide-on spiral for beautiful ringlets
- Large curling tong for big curls
- Small curling tong for tight curls and ringlets
- Slide on brush for added volume and beautiful waves

Less hair damage

Highlights

Ceramic plates



Ceramic is microscopically smooth and durable by nature and it is one of the best materials for straightening plates. The plates glide effortlessly through your hair, giving you perfect shiny hair.

Straightener attachment

The Ceramic plates glide effortlessly through your hair, giving you perfect straight and shiny hair.

Slide-on brush



This attachment can be easily placed on tong to create additional volume and beautiful wavy styles.

Slide-on spiral

Just follow the curves to create the most beautiful ringlets, it has never been so easy!

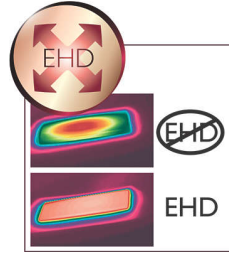
Small curling tong

If you want to create tight curls or ringlets, you need to use a curling iron with a small diameter.

Large curling tong

If you want to create beautiful curls or waves, you need this large curling attachment with a large sized diameter.

EHD+ technology

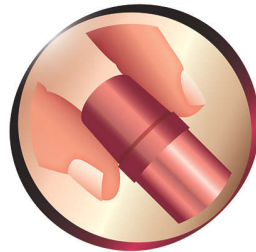


Advanced Philips EHD+ technology means that your styler will always distribute the heat very evenly - even at high temperatures, and prevents damaging hot spots. This gives added protection and thus helps to keep your hair healthy and shiny.

Hairclips

Use the hairclips to make sections, this will help you to style all your hairs easily.

Cool tip



The tip of the styler is made from a special heat insulating material to keep it cool; you can safely hold it while you're styling for optimal ease of use.

Ready to use indicator



This shows when the styler has reached the right temperature, so you can instantly see when you're ready to style.

Heat resistant pouch

This Heat Resistant pouch is perfect for styling on the go. Forget waiting for your styler to cool down. Simply store using the heat resistant pouch included.

Safe usage



Some hair straighteners and curling irons have been equipped with an automatic shut-off feature. This feature has been designed to provide peace of mind. If left on, the appliance will automatically switch off after 60 min.

Safety stand

The safety stand enables you to put the curler down safely during use.

Included: Brush

Use this high quality brush to detangle and smoothen the hair cuticles to give that extra shine to your hair.

8 in 1 multi-styler

Every hairstyle you can imagine is possible with the versatile styling tools. Be creative!

Specifications

Technical specifications

Voltage: 100-240V V

Power: 25 W

Hair type

End result: Multi-styles

Current hair style: Straight, Wavy, Curly

Hair thickness: Thin

Hair length: Long, Medium

Serviceability

Replacement

