

# PHILIPS

Heated  
straightening brush

StyleCare Essential

Extra-large brush area

ThermoProtect technology

Tourmaline ceramic coating



BHH880/03



## Naturally straight hair in 5 minutes\*

Smooth, shiny, frizz-free hair

Reveal naturally straight, beautifully shiny hair in just 5 minutes. Our ThermoProtect technology and bristle design work together for healthy-looking, frizz-free hair.

#### Ease of use

- Swivel cord
- Fast heat-up time
- 1.8-m cord for maximum flexibility
- Large paddle-shaped brush
- Ready to use indicator light

#### Care and protect

- Tourmaline ceramic coating
- ThermoProtect technology
- Triple bristle design
- 2 temperature settings to suit your hair type

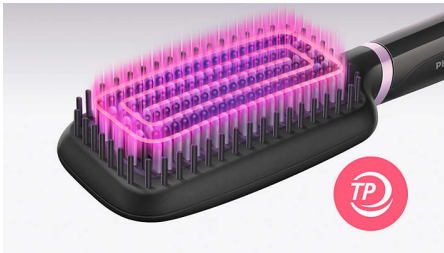
# Highlights

## Tourmaline ceramic coating



Tourmaline ceramic coating for shiny, smooth, frizz-free hair.

## ThermoProtect technology



ThermoProtect technology maintains a constant temperature across the brush to prevent overheating for protected, healthy-looking hair.

## 2 temperature settings

Two temperature settings (170°C and 200°C) to best suit your hair type.

## Triple bristle design



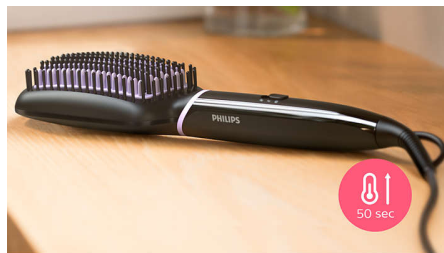
Triple bristle design gently detangles and straightens while protecting your scalp from heat.

## Paddle-shaped brush



The paddle-shaped design straightens more hair in one go.

## Fast heat-up time



Ready to use in 50 seconds.

## Ready to use indicator light



LED light indicates when the brush is ready to use.

## 1.8 m cord



1.8-m cord.

## Swivel cord



Swivel cord for comfortable use.

# Specifications

## Technical specifications

Voltage: Universal V

Cord length: 1.8 m

Heater type: PTC

Product size (mm): 350 L x 75 W x 48 D

Total number of bristles: 247

LED light indicator: White colour

## Features

Temperature Settings: 2 settings, 170°C and 200°C

Auto shut-off: after 60 min

Brush shape: Paddle

Brushing area (mm): 116 L x 60 W

Number of heated bristles: 111

## Service

2 year guarantee

## Ease of use

Storage hook

Swivel cord

## Caring technologies

ThermoProtect

Tourmaline ceramic coating

