



Philips Prestige Pro
Hair Dryer

2100W drying power

Powerful AC motor
High air speed up to 160 km/h*
Ionic care for shiny hair



HPS910/03

Designed for fast professional drying and styling

Philips Hair Dryer Prestige Pro features 2100W and a professional AC motor that reaches up to 160 km/h*, which is 40% faster**. Enhance your professional styling with two slim nozzles.

Easy to use

- 2.5m long cord
- 2-year warranty & 2 extra years upon online registration

Beautifully styled hair

- Six speed and heat settings for optimal control
- Cool Shot sets your style
- 2 thin styling nozzles for perfect styling: 7mm & 9mm
- 2100W of fast, high performance drying power
- Fast drying, powerful AC motor

Less hair damage

- Ionic care for smooth, frizz-free, shiny hair
- ThermoProtect temperature setting

PHILIPS

Hair Dryer
2100W drying power Powerful AC motor, High air speed up to 160 km/h*, Ionic care for shiny hair

HPS910/03

Highlights

Professional AC motor



The Pro Hair Dryer has a high performance AC motor with up to 160 km/h* air speed, which is 40% faster**. It is developed for professional, effective results.

2100W of power



This 2100W professional hair dryer creates a powerful airflow. The resulting combination of power and speed makes drying and styling your hair quicker and easier.

Ionic care



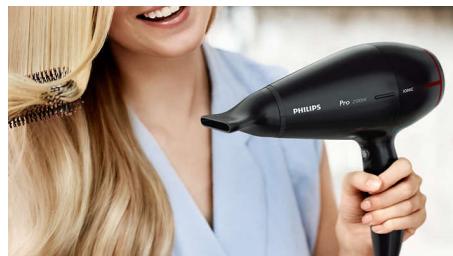
Charged negative ions eliminate static, condition the hair and smooth down the hair cuticles to intensify the hair's shine and glossiness. The result is hair that is smooth, shiny and frizz-free.

ThermoProtect temperature



The ThermoProtect temperature setting provides the optimal drying temperature and gives additional protection from overheating the hair. With the same powerful airflow, you will get the best results in a caring way.

2 thin styling nozzles



Perfect styling results with 2 slim nozzles for every need. The 7mm - for precise styling and 9 mm nozzle for brushing and polishing of your hair.

Accurate control

The speed and heat required can be easily adjusted to create the perfect style. Six different settings ensure optimal control for precise and tailored styling.

Cool Shot

A must-have professional function, the Cool Shot button provides an intense burst of cold air. It is used after styling to finish and set the style.

2.5m cord



The professional 2.5m long cord reinforces the ease of use anywhere you want.

Long-lasting warranty



Extend your 2-year warranty with 2 extra years with online registration of your product within 3 months of purchase.

Hair Dryer

2100W drying power Powerful AC motor, High air speed up to 160 km/h*, Ionic care for shiny hair

HPS910/03

Specifications

Technical specifications

- Voltage: 220-240 V
- Cord length: 2.5 m
- Wattage: 2100 W
- Motor: AC
- Dual Voltage: No
- Color / Finishing: Black & Red
- Drying speed: up to 160 km/h*

Features

- Foldable handle: No
- Cool shot
- Storage hook
- Heat/Speed settings: 6
- Removable air inlet filter

Weight & dimensions

- Product weight (excl. pack): 0.828kg

Service

- 2-year worldwide warranty: Plus 2 years upon registration

Caring technologies

- Ionic Care
- ThermoProtect setting

Consumer Trade Item

- Height: 15.4
- Width: 36.5
- Length: 29.5
- Net Weight: 1.85
- Gross Weight: 2.232
- GTIN: 08720689001021
- Country of origin: CN
- Harmonized system code: 85163100



Issue date 2022-06-25

Version: 8.0.1

EAN: 08 72068 90010 21

© 2022 Koninklijke Philips N.V.
All Rights reserved.

Specifications are subject to change without notice.
Trademarks are the property of Koninklijke Philips N.V.
or their respective owners.

www.philips.com

* Tested with 9 mm nozzle at Speed 2 and Heat 2 settings
** vs. predecessor HP4997