

PHILIPS

Hair Dryer

3000 Series

1600 W

ThermoProtect attachment

3 heat and speed settings



BHD302/10

Powerful drying at a lower temperature with the ThermoProtect attachment

The uniquely-designed ThermoProtect attachment powerfully mixes warm and cool air for everyday care.

Easy to use

- 3 heat and speed settings
- Slim nozzle for touch-ups and detailed styling

Care and protect

- ThermoProtect attachment

Powerful drying

- 1600 W of drying power
- Cool air setting to finish your style

Highlights

1600 W of drying power



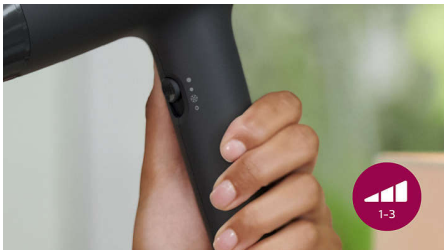
This 1600 W hair dryer creates the optimum level of airflow, for beautiful results every day.

ThermoProtect attachment



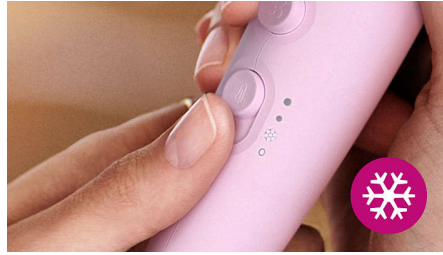
The uniquely-designed ThermoProtect attachment powerfully mixes warm and cool air for everyday care. It drops the temperature by 10°C while still drying your hair quickly.

3 heat and speed settings



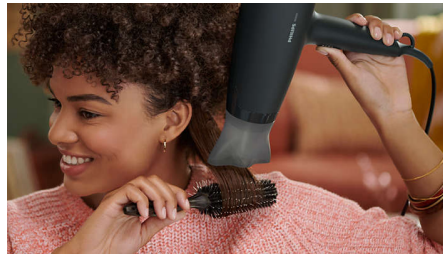
This hairdryer offers 3 preselected heat/speed combinations, making it quick and easy to achieve the perfect style.

Cool air setting



The cool air setting provides a burst of cold air to finish and hold your style.

14 mm styling nozzle



The slim nozzle precisely focuses the air for quick touch-ups and perfecting small details of your style.

Specifications

Attachments

Nozzle: 14 mm
ThermoProtect attachment

Technical specifications

Cord length: 1.8 m
Voltage: 220-240 V
Wattage: 1600 W
Motor: DC

Features

Storage hook
Heat/Speed settings: 3
Settings: Cool air setting

Service

2 year worldwide warranty

Caring technologies

ThermoProtect

