

# PHILIPS

## Hair Dryer Essential

1600W

ThermoProtect setting

3 heat & speed settings



BHD002/00

## Powerful drying with care

The Philips Hair Dryer Essential provides you with powerful drying of 1600W, while caring for your hair with the ThermoProtect temperature setting. Easy to use with 3 heat & speed settings and cool shot.

### Easy to use

- Easy storage hook for convenient storage
- 3 flexible heat and speed settings

### Beautifully styled hair

- ThermoProtect temperature setting
- 1600W of drying power
- Cool shot to set your style

### Attachments

- 20mm nozzle for focused airflow

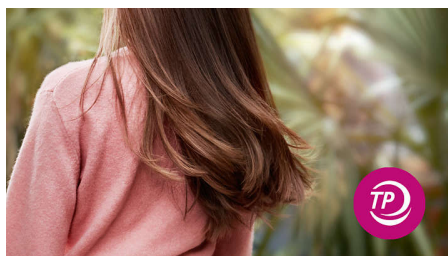
# Highlights

## 1600W of drying power



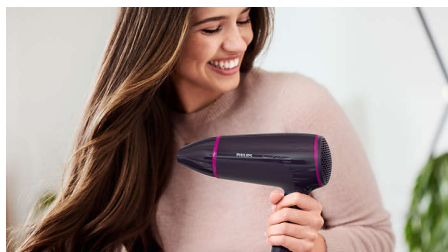
This 1600W hair dryer creates the optimum level of airflow, for beautiful results every day.

## ThermoProtect temperature



The ThermoProtect temperature setting provides the optimal drying temperature and gives additional protection from overheating the hair. With the same powerful airflow, you will get the best results in a caring way.

## 20 mm nozzle



The nozzle focuses the airflow for precision styling and touch-ups.

## 3 flexible speed settings



This hairdryer offers 3 pre-selected speed/heat combinations to make it quick and easy to achieve the perfect style.

## Cool shot



The Cool shot provides a burst of cold air – a must-have setting to set and finish your style.

## Easy storage hook



A rubberized hook can be found on the base of the handle. Use to store easily at home or if staying at a hotel.

# Specifications

## Weight & dimensions

Product size: 274 x 78 x 174mm

Product weight (excl. pack): 425g

## Technical specifications

Color/finishing: ABS high gloss and matt

Cord length: 1.8 m

Frequency: 50–60 Hz

Wattage: 1600 W

Voltage: 220–240 V

Motor: DC Motor

## Features

Hanging loop

Number of attachments: 1

Nozzle / Concentrator

Coolshot

## Service

2-year worldwide warranty

