

PHILIPS

Straightener

HP4625/00



Salon looks wherever you go

Salon Styling Set

This straightener provides salon-straight results for women on the go. The SalonStraight Want2Move is foldable and takes just 30 s to heat up, so you can start styling straightaway, wherever you are. Includes heat-resistant travel pouch.

Ease of use

- Dual voltage for worldwide use
- Heat resistant pouch
- Foldable handle for easy portability
- Handy pocket mirror
- Compact design for easy handling
- Included: Precise facial shaving and eyebrow trimmer

Beautifully styled hair

- 180°C temperature for beautiful results
- Ceramic plates for smooth gliding and shiny hair

Time saving

- Instant heat: ready to use within 30 seconds

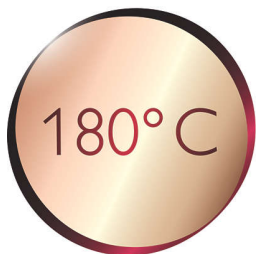
Highlights

Ceramic plates



Ceramic is microscopically smooth and durable by nature and it is one of the best materials for straightening plates. The plates glide effortlessly through your hair, giving you perfect shiny hair.

180°C temperature



This high temperature enables you change the shape of your hair, and gives you that perfect look like you've just come from the salon.

Instant heat

Now more waiting around for your styler to heat up, this allows you to switch on and get styling.

Foldable handle



This hairdryer benefits from a foldable handle. The result is a small, compact hair dryer that will easily pack into the smallest spaces and you can take virtually anywhere.

Compact design



Compact and ergonomic, this styler benefits from a clever modern design. This results in a styler that is light and easy to handle yet small enough to store virtually anywhere.

Dual voltage



Dual voltage for worldwide use

Heat resistant pouch

This Heat Resistant pouch is perfect for styling on the go. Forget waiting for your styler to cool down. Simply store using the heat resistant pouch included.

Pocket mirror

Check if your hair is still perfectly styled anytime.

Precision trimmer

Included: Precise facial shaving and eyebrow trimmer

Specifications

Weight and dimensions F-box

Net product dimensions excl. attachments:

300 (L) x 45 (W) x 50 (H) mm

F-box dimensions: 225(200) (L) x 70(62) (W) x 240 (H) mm

Weight of net product incl. attachments:

400 g

F-box volume: 3490 cm³

F-box weight (including product): 590 g

Pallet

Number of layers: 7

Quantity: 280

Pallet dimensions: 1200 x 800 mm

Number of A-boxes per layer: 5

Weight and dimensions A-box

Number of F-boxes in A-box: 8

Dimensions: 466 (L) x 313 (W) x 258 (H) mm

Weight: 5100 g

Serviceability

Replacement

Logistic data

CTV code: 8844-625-00

Country of origin: China

EAN F-box

Technical specifications

Cord length: 1.8 m

Voltage: ~100-240 V

Color/finishing

Material housing styler: PET

Wattage styler: 17 V

DC frequency (styler): 50/60 Hz

Voltage facial shaver: 1.5 DC V

Wattage facial shaver: 0.45 W

