

PHILIPS



Wet & Dry electric
shaver with SkinIQ

Shaver series 9000

Skin-level closeness

Dual SteelPrecision blades

Pressure Guard sensor

360-D Flexing heads



S9987/54

Superior closeness*, personalized skin comfort

For superior closeness, even on a 5-day beard

Discover the world's most intelligent shaver powered by AI, Philips Shaver Series 9000. Cuts at skin level with Lift & Cut shaving system, while SkinIQ technology gives real time pressure feedback to protect your skin.

A closer shave

- Cuts hair in every direction with 360-degree rotating blades
- Skin-level closeness with Lift & Cut shaving system

SkinIQ technology

- Adjusts to your beard density with Power Adapt Sensor
- 30% smoother*** gliding with Protective SkinGlide Coating
- Always the optimal pressure with the Pressure Guard Sensor
- Adapts to your contours with 360-D Flexing Heads

For a convenient shave

- Precision trimmer integrated in the handle
- Effortless charging with convenient stand available at hand
- 60 minutes of cordless shaving once fully charged
- Enhance your shaving experience with Philips Shaving App
- Deep cleaning in just 1 minute for hygienic shaving

Premium experience

Shaver series 9000

Wet & Dry electric shaver with SkinIQ

S9987/54

Highlights

Lift & Cut System



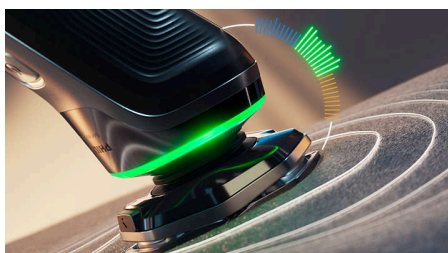
Our patented, unique Lift & Cut rotary technology lifts the hair gently out of its root before cutting it precisely at skin level close (up to 0.00 mm to the skin) without the blades even touching your skin.

Dual SteelPrecision blades



Philips rotary shavers are specifically designed to match your natural hair growth, capturing all the hairs growing in any direction, thanks to 360-degree rotating blades. With up to 150,000 cutting actions per minute, the Dual SteelPrecision blades cut more hair per stroke**.

Pressure Guard sensor



Using the right pressure is key for closeness and skin protection. Advanced sensors in the shaver read the pressure you apply, and the innovative light signal shows when you are pressing too hard or too little. For a personalized shave that is just right for you.

360-D Flexing heads



Designed to follow the contours of your face and even the neck, this Philips electric shaver has fully flexible heads that turn 360° for a thorough and comfortable shave.

Up to 5-year warranty*****



Our shavers are engineered for excellence and come with 5-Year Warranty so you can enjoy ultimate reliability and performance. Shave after shave.

Protective SkinGlide coating



A protective coating lies between the shaver heads and your skin. Made of up to 250.00 micro-tech beads per square centimeter, the coating improves gliding by up to 30%***, to minimize irritation.

Power Adapt sensor



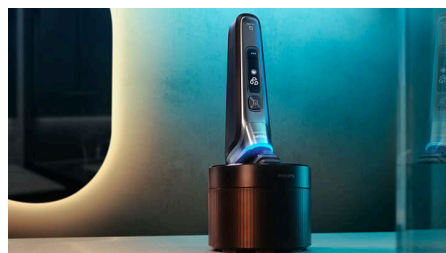
The electric shaver has intelligent facial-hair sensing technology that reads hair density 500 times per second. The Power Adapt Sensor auto-adapts the cutting power for an effortless and gentle shave

Personalization via app



Perfect your shave by pairing your shaver with the Philips Shaving App****. Shave by shave, track the progress of your skin, personalize your shave and master your technique for a shave that's as close as it is kind to skin.

Cable-free Quick Clean Pod



Powerful cleaning pod thoroughly cleans and lubricates your shaver in just 1 minute, keeping it performing at its best for longer. The pod is 10x more effective than cleaning with water*****. It is the world's smallest cleaning pod, so you can store it easily and use it anywhere.

Shaver series 9000

Wet & Dry electric shaver with SkinIQ

S9987/54

Highlights

Wet & Dry



Adapt your shaving routine to your needs. With Wet & Dry, you can go for a comfortable dry shave or a refreshing wet shave. You can shave with gel or foam even under the shower.

Pop-up trimmer



Complete your look using the shaver's pop-up precision trimmer. Integrated into the shaver's body, it's the perfect way to maintain a mustache and trim sideburns.

Sustainability



By replacing 30% of our internal plastics with recycled plastics, we are saving tons of virgin plastic in our production. On top of that, our blades are made from 80% recycled steel and produced in a factory that uses 100% renewable energy.

Charging stand



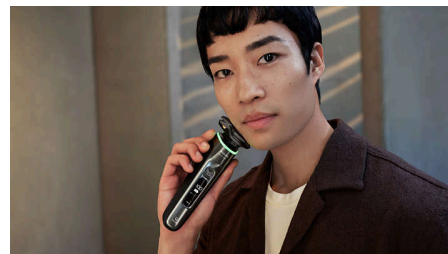
Fully charge your shaver within 1 hour in the stand. A stand created for both conveniently charging your device and neatly storing it away.

Advanced OLED display



The first Philips shaver with a dynamic OLED display reveals every shaver feature and notification with sharp, fluid animation. The intuitive interface includes SkinIQ guidance, battery status, cleaning advice and more.

60 minutes of cordless shaving



This advanced charging system gives you two convenient options: 60 minutes of running time after a full charge, or a quick charge for one shave.

Shaver series 9000

Wet & Dry electric shaver with SkinIQ

S9987/54

Specifications

SmartClick attachment

Fits product type: RQ585/51 DOES NOT fit angular head type

Accessories

SmartClick: Cleansing Brush

Charging stand

Pouch: Travel case

Quick Clean Pod: Yes, 1 cartridge included

Integrated pop-up trimmer

Power

Run time: 60 minutes

Charging: 1 hour full charge, 5 min quick charge

Battery type: Li-ion

Design

Finishing: Timeless elegance

Handle: Ergonomic grip & handling

Color: Dark chrome

Service

Replacement head: Replace every 2 yrs with SH91

2 + 3 years warranty*****

Shaving Performance

Contour following: 360-D Flexing heads

Shaving system: Lift & Cut System, Dual SteelPrecision blades

SkinIQ technology: Pressure Guard sensor, Protective SkinGlide coating, Motion Control sensor, Power Adapt sensor

Ease of use

Cleaning: One-touch open, Fully washable

Display: % Battery Level Indicator

Wet & Dry: Wet and dry use

