

PHILIPS

Wet & dry electric
shaver

Shaver series 9000
SensoTouch

UltraTrack & GyroFlex 3D

60 min cordless use/1h charge

Precision trimmer

Jet clean system

RQ1280/21



Ultimate shaving experience

with GyroFlex 3D system

Our most advanced shaver, the Philips SensoTouch 3D RQ1280 electric shaver gives you the ultimate shaving experience. The GyroFlex 3D system follows every contour of your face and the UltraTrack heads shave every hair in just a few strokes.

Follows the unique contours of your face

- Philips GyroFlex 3D system adjusts seamlessly to every curve

Sensationally smooth shave

- UltraTrack heads catch every hair with just a few strokes
- Shavers with Super Lift&Cut Action

An electric shaver which takes care of your skin

- Aquatec seal for comfortable dry & refreshing wet shaves
- Smooth, low-friction SkinGlide to minimize irritation

Shave with perfect control and precision

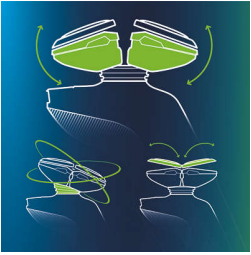
- Easy grip handle with ergonomic grip for close control
- Skin friendly precision trimmer

A brand new shave every day

- Jet Clean+ system cleans, lubricates and charges the shaver

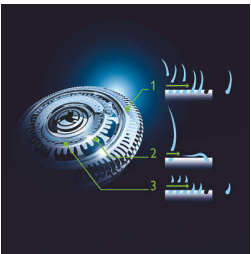
Highlights

GyroFlex 3D Shaver



GyroFlex 3D contour-following heads of the shaver adjust seamlessly to every curve of your face, minimizing pressure and irritation on your skin.

UltraTrack Shaver Heads



Get a close shave that minimizes skin irritation. The shaving head has 3 specialized tracks: slots for normal hair; channels for long or flat laying hair; and holes for the shortest stubble on your face.

Super Lift & Cut Action



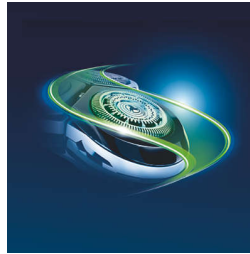
The dual blade system built into the Philips electric shaver lifts hairs to cut comfortably below skin level for a closer shave.

Aquatec



The Aquatec wet & dry seal of the electric shaver lets you choose how you prefer to shave. You can get a comfortable dry shave or a refreshing wet shave using a shaving gel or foam for extra skin comfort.

SkinGlide



The low-friction SkinGlide shaving surface of the electric shaver slides smoothly along your skin for a close easy shave.

Easy grip



The easy grip shaver handle has an ergonomic grip with anti-slip coating, ensuring close control for an extra precision shave.

Jet Clean+ system



Our Jet Clean+ System cleans and lubricates the blades and recharges the battery after every use. It offers 3 cleaning settings: automatic for normal usage, eco for 40% less energy usage, and intensive for extra-thorough cleaning.

Precision trimmer



The unique skin friendly precision trimmer system is built to avoid unnecessary skin contact. Easy to use for perfect moustache and sideburn trimming.

Specifications

Logistic data

Quantity per A-box: 2 pcs
EAN: 87-1010352336-9
Dimensions: L 13.6 x W 25.5 x H 24.5 cm
Weight: 1.745 kg

Accessories

Maintenance: Cleaning brush, Protective cap
Pouch: Luxurious pouch
Stand: Foldable charging stand
Luxurious travel pouch
Jet Clean system

Power

Battery Type: Lithium-ion
Run time: 60 minute(s)
Stand-by power: 0.15 W
Max power consumption: 5.4 W
Automatic voltage: 100-240 V

Design

Finishing: Chromed frame, LED Display
Color: Black
Handle: Slim handle, Easy grip, Anti-slip grip

Service

Replacement head: Replace every 2 yrs with RQ12
2-year guarantee

Shaving Performance

Shaving system: UltraTrack shaving heads, Patented Super Lift & Cut, Speed XL shaving heads
Contour following: GyroFlex 3D contour following
SkinComfort: SkinGlide
Styling: Skin friendly precision trimmer

Ease of use

Charging: 1 hour, Rechargeable, Cordless, Quick charge
Wet & Dry: Wet and dry use, Jet Clean
Cleaning: Washable
Display: Full numeric battery indicator, Battery low indicator, Charge indicator, Travel lock, Cleaning indicator, Replace shaving heads indicator
Shaving time: Up to 20 days
Jet Clean+: 3 cleaning settings, Automatic, Cleans, lubricates and charge, Intensive, Low-energy

